



Manuals.plus /

› ConGamefun /

› ConGamefun Programmable Multi-Axis Robotic Arm Building Set (Model J156O1HW91WBNB840Y344EJP) User Manual

ConGamefun J156O1HW91WBNB840Y344EJP

ConGamefun Programmable Multi-Axis Robotic Arm Building Set

Model: J156O1HW91WBNB840Y344EJP

1. INTRODUCTION

This manual provides essential instructions for the assembly, operation, and maintenance of your ConGamefun Programmable Multi-Axis Robotic Arm Building Set. Please read this manual thoroughly before beginning assembly or operation to ensure correct usage and to maximize your experience.

Safety Information

- Recommended for ages 16 and up.
- Keep small parts away from young children to prevent choking hazards.
- Ensure all electrical connections are secure during operation.

What's in the Box

- Building Blocks Set (1029 pieces) x 1
- Instruction Manual x 1

2. SETUP AND ASSEMBLY

The ConGamefun Programmable Multi-Axis Robotic Arm is a dynamic construction kit consisting of 1029 pieces. Assembly requires careful attention to detail and adherence to the provided step-by-step instructions.

1. Unpack all components and verify that all 1029 pieces are present according to the parts list in the included manual.
2. Follow the beautifully printed, easy-to-follow manual to construct the robotic arm. Each step is clearly illustrated to guide you through the building process.
3. Pay close attention to the intricate gear linkage and mechanical transmission structure during assembly to ensure proper functionality.
4. Once assembled, ensure all connections are firm and the structure is stable.



Image: The fully assembled robotic arm, illustrating its dimensions (401 mm length, 298mm height).

Multi-axis mechanical transmission structure

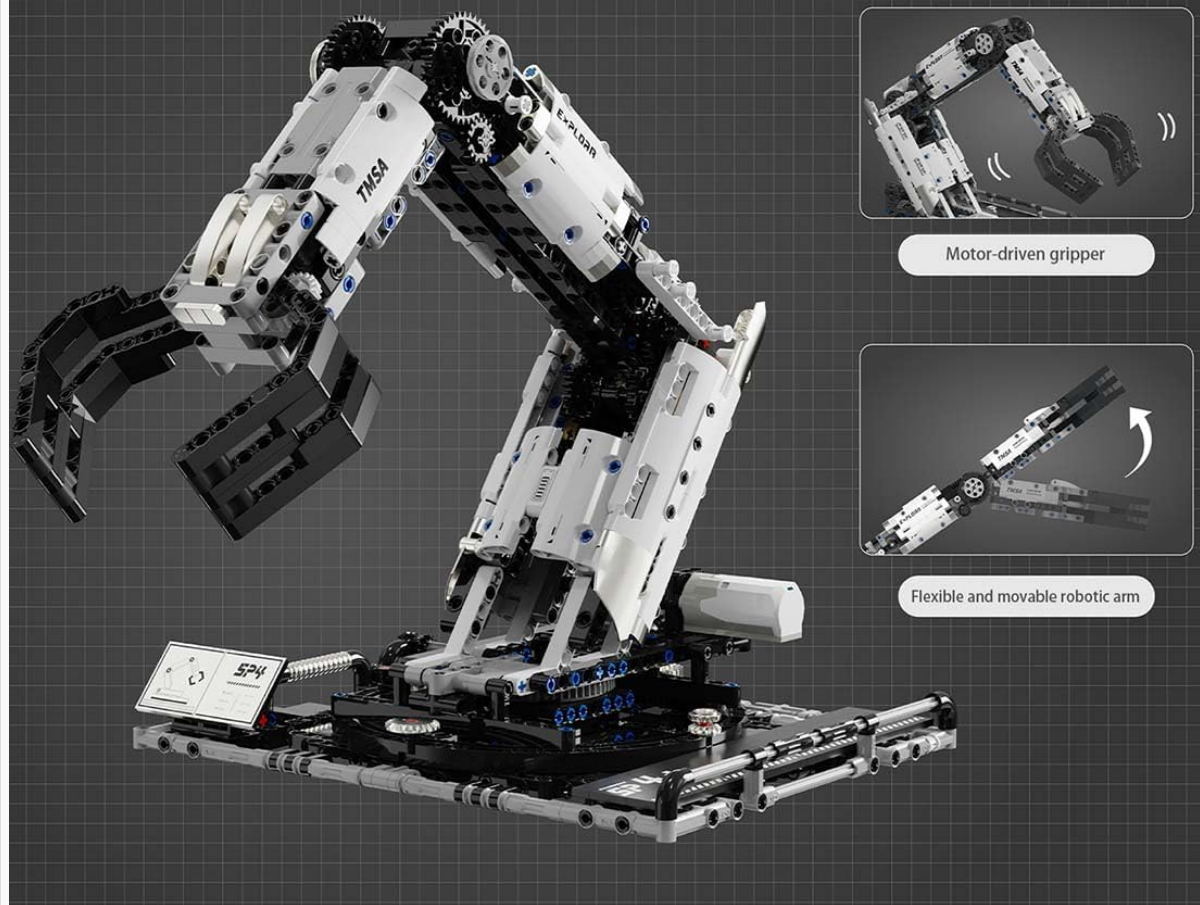


Image: Detailed view of the multi-axis mechanical transmission structure, highlighting the motor-driven gripper and flexible arm movement.

3. OPERATING INSTRUCTIONS

The robotic arm features programmable multi-axis robotics, allowing for flexible control and various movements.

Programmable Control

- The robotic arm is equipped with a composite motor system that enables precise and flexible control of its movements.
- Utilize the mobile APP for remote control programming. Refer to the specific instructions within the APP for detailed programming steps.
- Note: Due to variations in phone models, there may be slight command variations or compatibility differences with the mobile APP.
- The rolling plated transmission adds to the arm's texture and contributes to its dynamic movement capabilities.

Programmable control robotic arm

Educational toy, combining education and fun

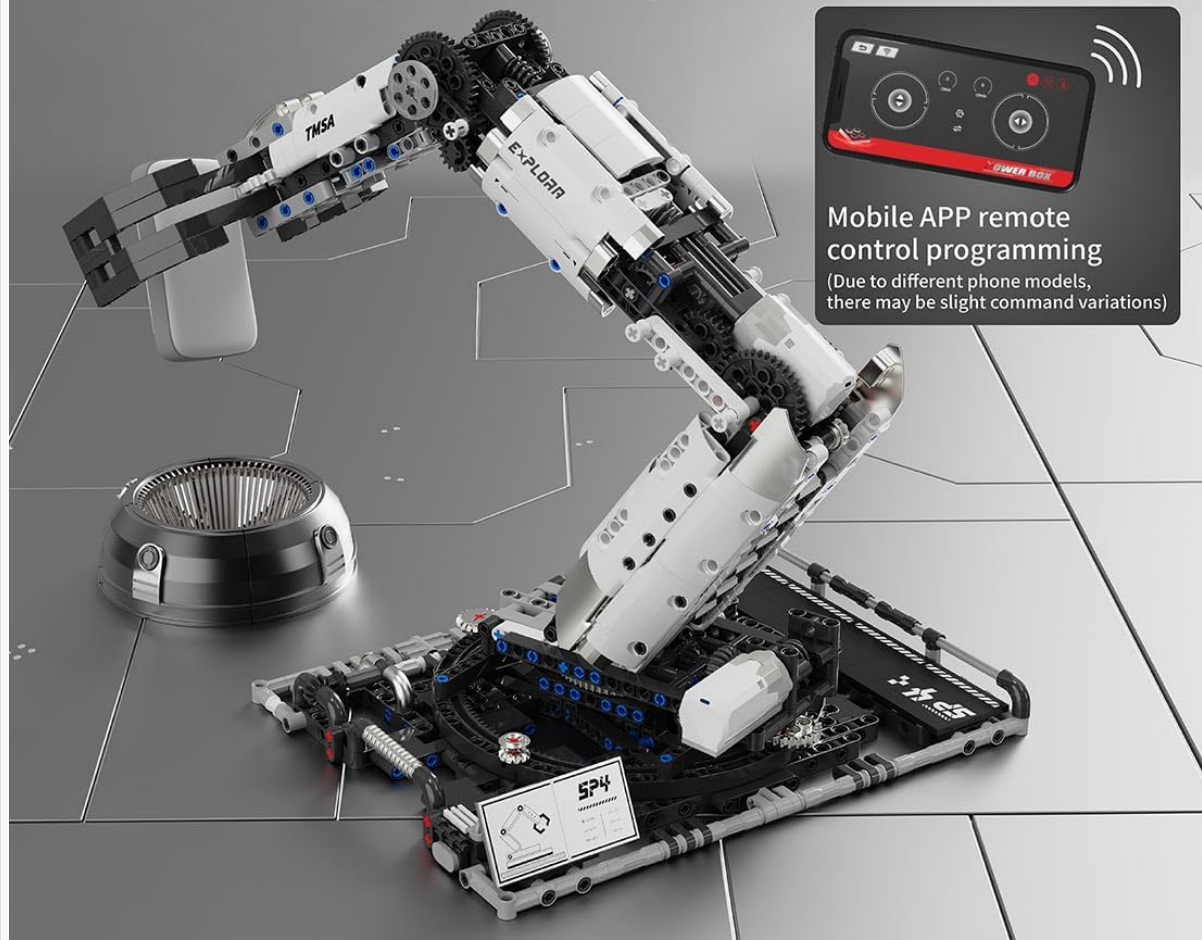


Image: The robotic arm demonstrating programmable control, with an overlay showing the mobile APP remote control interface.

PROGRAMMABLE CONTROL ROBOTIC ARM

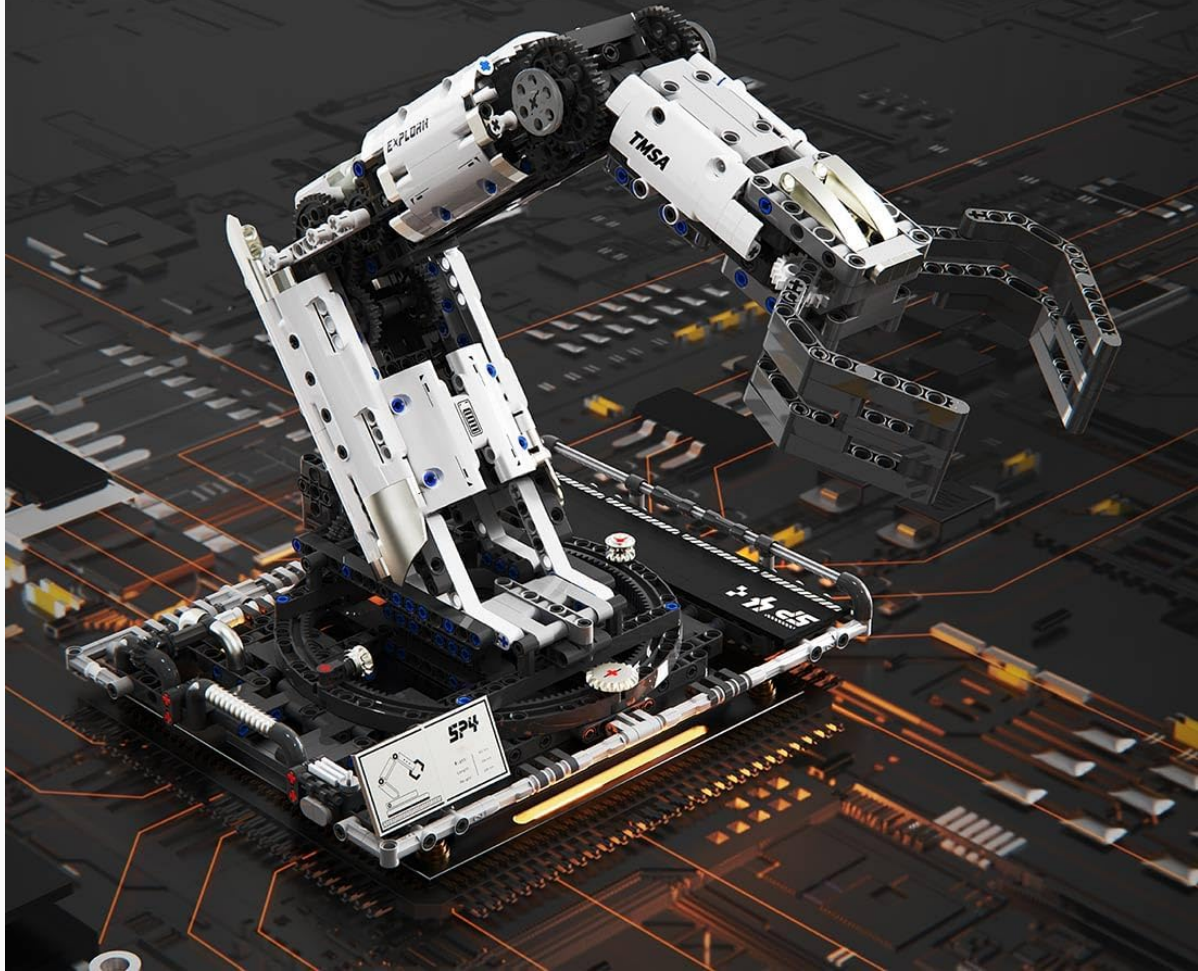


Image: A general view of the programmable control robotic arm, showcasing its design and potential for dynamic movement.

4. MAINTENANCE

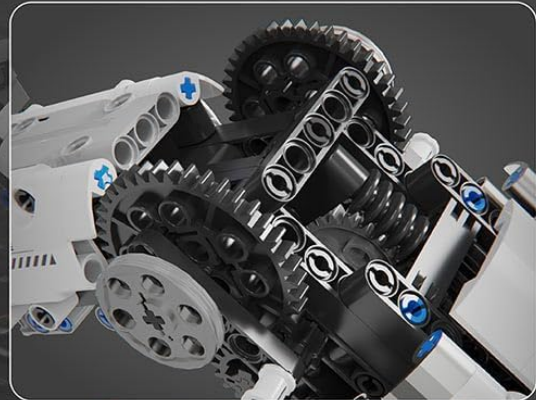
Proper maintenance ensures the longevity and optimal performance of your robotic arm.

- **Cleaning:** Gently wipe the surfaces of the robotic arm with a dry, soft cloth to remove dust. Avoid using harsh chemicals or abrasive materials.
- **Storage:** Store the assembled robotic arm in a clean, dry place away from direct sunlight and extreme temperatures.
- **Inspection:** Periodically check for any loose connections or parts. Re-tighten or re-assemble as necessary.

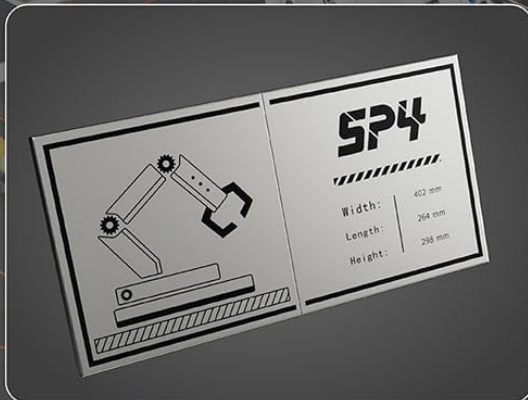
Exquisite craftsmanship enriches the details



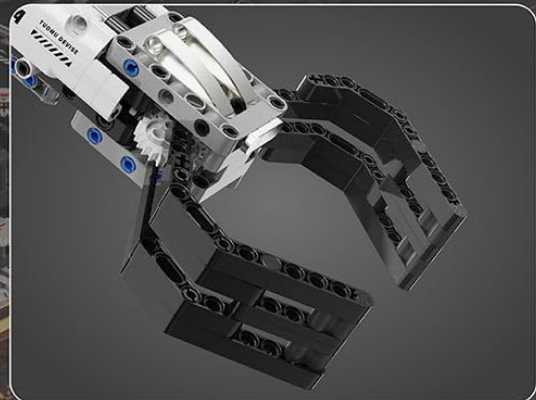
High-definition pad printing process



Multi-gear linkage structure



Exclusive metal-texture nameplate



Enhanced texture with roll plating process

Image: Close-up views highlighting the exquisite craftsmanship, including high-definition pad printing, multi-gear linkage structure, exclusive metal-texture nameplate, and enhanced texture with roll plating process.

5. TROUBLESHOOTING

If you encounter issues with your robotic arm, consider the following general troubleshooting steps:

- **Arm Not Moving:** Ensure all motor connections are secure and the power source (if external) is properly connected. Verify that the mobile APP is correctly paired and sending commands.
- **Incorrect Movement:** Recheck the assembly steps in the manual, particularly for gear placement and mechanical linkages. Incorrect assembly can lead to restricted or unintended movements.
- **APP Connectivity Issues:** Ensure your mobile device's Bluetooth or wireless connection is active and the robotic arm is within range. Restart the APP and the robotic arm if necessary.
- **Missing or Damaged Parts:** If you discover any missing or damaged parts during assembly, please refer to the support section for assistance.

6. SPECIFICATIONS

Feature	Detail
Model Number	J156O1HW91WBNB840Y344EJP
Material	ABS
Number of Pieces	1029
Product Dimensions (Assembled)	40.1 x 29 x 40.1 cm (15.79 x 11.42 x 15.79 inches)
Product Weight	1397 g (3.08 pounds)
Package Dimensions	34 x 11.4 x 25 cm
Package Weight	1517 g
Recommended Age	16 years and up
Manufacturer	ConGamefun

7. WARRANTY INFORMATION

Specific warranty details for the ConGamefun Programmable Multi-Axis Robotic Arm Building Set are not provided in this document. Please refer to the product packaging or the manufacturer's official website for comprehensive warranty information.

8. SUPPORT

For further assistance, technical support, or inquiries regarding replacement parts, please visit the official ConGamefun website or contact their customer service department. Contact information may also be available on the product packaging.