

Jocoevol BG-0605

Jocoevol 6-Drawer Dresser Instruction Manual (Model BG-0605)

Detailed instructions for assembly, operation, and maintenance.

1. INTRODUCTION

This manual provides comprehensive instructions for the assembly, safe operation, and maintenance of your Jocoevol 6-Drawer Dresser, Model BG-0605. Please read all instructions carefully before beginning assembly and retain this manual for future reference. Proper assembly and care will ensure the longevity and safe use of your dresser.



Image 1: Fully assembled Jocoevol 6-Drawer Dresser.

2. SAFETY INFORMATION

To prevent serious injury, always follow these safety guidelines:

- **Tip-Over Hazard:** Furniture tip-overs can cause serious or fatal injuries. Always secure this dresser to the wall using the provided anti-tip kit.
- **Adult Assembly Required:** This product contains small parts and requires adult assembly. Keep children and pets away during assembly.
- **Weight Distribution:** Do not place excessively heavy items on the top surface or in the drawers. Distribute weight evenly.
- **Drawer Use:** Do not allow children to climb on or hang from drawers. Open only one drawer at a time to maintain stability.
- **Placement:** Place the dresser on a flat, level surface.

Anti-collapse Design

Protect your kids and pets

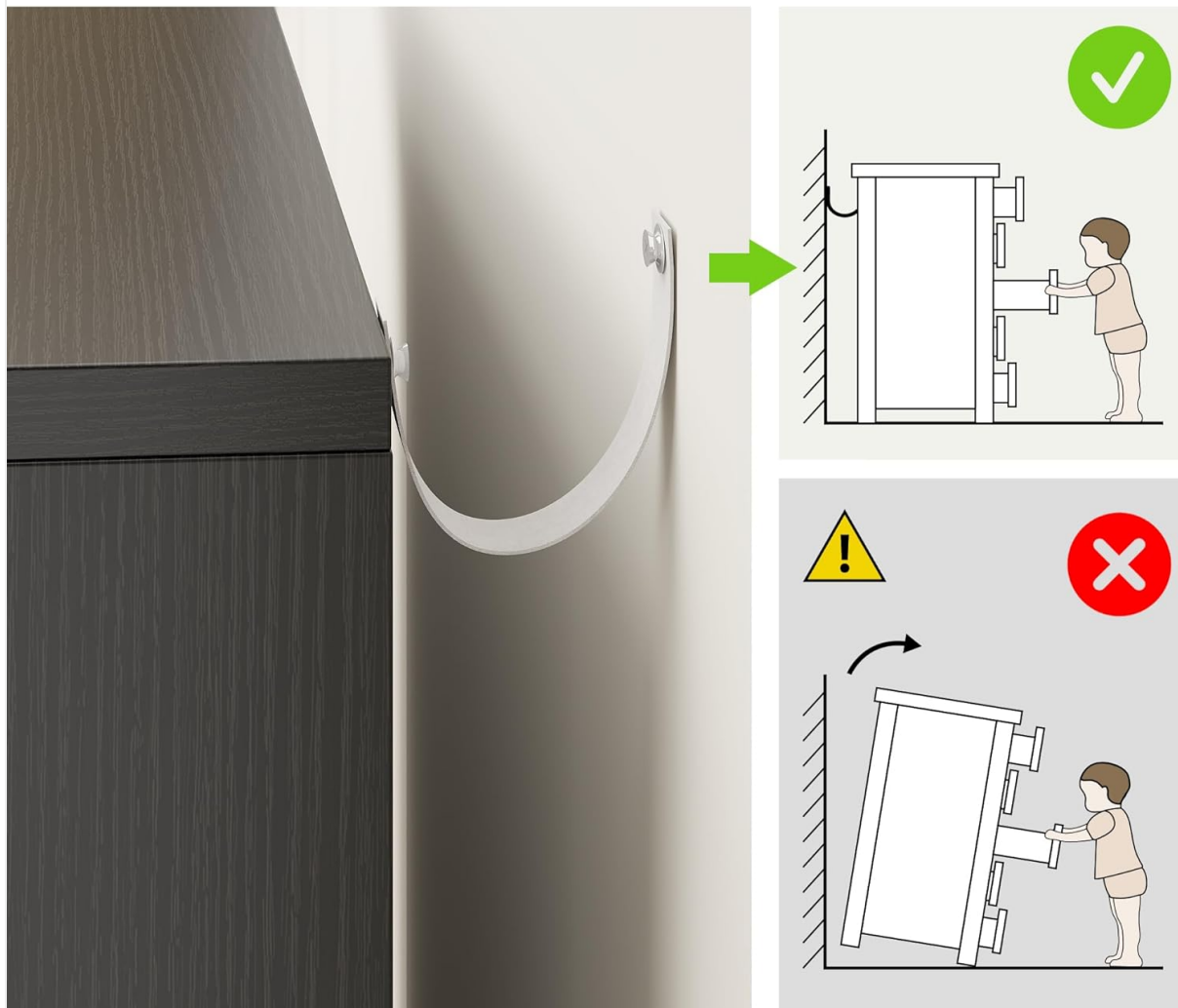


Image 2: Anti-collapse design for enhanced safety.



Image 3: Detailed view of the anti-tip strap installation.

3. PACKAGE CONTENTS

Before assembly, verify that all parts and hardware are present. If any items are missing or damaged, please contact customer support.

3.1. Parts List

- Top Panel (x1)

- Bottom Panel (x1)
- Side Panels (x2)
- Middle Support Panels (x2)
- Back Panel (x1)
- Drawer Front Panels (x6)
- Drawer Side Panels (x12)
- Drawer Back Panels (x6)
- Drawer Bottom Panels (x6)
- Drawer Slide Rails (Left x6, Right x6)
- Support Bars (x3)

3.2. Hardware List

- Cam Bolts (Type A)
- Cam Locks (Type B)
- Wooden Dowels (Type C)
- Small Screws (Type D, E, F, I, K)
- Anti-Tip Kit (Strap, Wall Anchor, Screws)

4. SETUP AND ASSEMBLY INSTRUCTIONS

Follow these steps carefully for proper assembly. It is recommended to assemble the dresser on a soft, clean surface to prevent scratches.

1. **Prepare Side Panels:** Attach cam bolts (Type A) and wooden dowels (Type C) to the designated holes on the side panels.
2. **Install Drawer Slides to Main Body:** Secure the left and right drawer slide rails (CL and CR) to the inner surfaces of the side panels and middle support panels using small screws (Type D). Ensure they are oriented correctly.
3. **Assemble Base Structure:** Connect the bottom panel to the side panels and middle support panels using cam locks (Type B) and cam bolts (Type A).
4. **Attach Support Bars:** Secure the horizontal support bars to the back of the dresser frame using small screws (Type K).
5. **Install Back Panel:** Slide the back panel into the grooves of the assembled frame and secure it with small nails or screws (Type C).
6. **Attach Top Panel:** Place the top panel onto the assembled frame, aligning the cam bolts and securing with cam locks (Type B).
7. **Assemble Drawers (Repeat 6 times):**
 - Attach drawer side panels to the drawer front panel using cam bolts (Type A) and wooden dowels (Type C).
 - Slide the drawer bottom panel into the grooves.
 - Attach the drawer back panel to complete the drawer box using cam locks (Type B).
 - Install the remaining drawer slide rails (DL and DR) to the sides of each drawer box using small screws (Type D).
8. **Insert Drawers:** Carefully slide each assembled drawer into its corresponding slot in the dresser frame.

9. **Install Anti-Tip Kit:** Secure the anti-tip strap to the back of the dresser and then to a wall stud using the provided hardware. This step is critical for safety.



Image 4: Drawer slide mechanism for smooth operation.

5. OPERATING INSTRUCTIONS

Your Jocoevol 6-Drawer Dresser is designed for easy and efficient storage. To operate:

- **Opening Drawers:** Gently pull the top edge of the drawer front to open. The smooth-gliding rails ensure effortless access.
- **Closing Drawers:** Push the drawer firmly until it is fully closed and flush with the dresser frame.
- **Weight Capacity:** Avoid overloading drawers. Distribute items evenly to prevent strain on the drawer slides and maintain stability.



Image 5: Example of organized drawer storage.

6. MAINTENANCE

To keep your dresser in optimal condition:

- **Cleaning:** Wipe surfaces with a soft, damp cloth. Avoid harsh chemicals or abrasive cleaners that may damage the finish.
- **Spills:** Promptly clean up any spills to prevent staining or damage to the wood.
- **Hardware Check:** Periodically check all screws and fasteners to ensure they are tight. Retighten if necessary.
- **Sunlight Exposure:** Avoid prolonged exposure to direct sunlight to prevent fading or discoloration.

7. TROUBLESHOOTING

If you encounter issues with your dresser, refer to the following common solutions:

- **Drawers not closing smoothly:**

- Check if the drawer slides are properly aligned and free of obstructions.
- Ensure all screws on the drawer slides and frame are securely tightened.
- Verify that the drawer is not overloaded or unevenly weighted.

- **Dresser wobbles:**

- Ensure the dresser is placed on a flat, level surface.
- Check all assembly hardware for tightness.
- Confirm the anti-tip kit is correctly installed and secured to the wall.

- **Missing or damaged parts:**

- Review the "Package Contents" section. If parts are genuinely missing or damaged, contact Jocoevol customer support for replacements.

8. SPECIFICATIONS

| | |
|----------------------------|-----------------------------------|
| Brand: | Jocoevol |
| Model Name: | BG-0605 |
| Product Dimensions: | 15.3"D x 47.2"W x 32.3"H |
| Color: | Black |
| Room Type: | Bedroom, Home Office, Living Room |
| Drawer Type: | Under Mounted Slide |
| Assembly Required: | Yes |
| Item Weight: | 92 pounds |
| Product Care: | Wipe with Damp Cloth |

Product Size



Image 6: Product dimensions and individual drawer dimensions.

9. WARRANTY AND SUPPORT

Jocoevol is committed to providing quality products. For any questions, concerns, or to report missing/damaged parts, please contact Jocoevol customer support. Please have your model number (BG-0605) and purchase information ready when contacting support.

Specific warranty details may vary by region and retailer. Please refer to your purchase documentation for warranty terms and conditions.