



Manuals.plus /

› Leiksen /

› Leiksen TB-1118 12-in-1 Steam Mop Instruction Manual

Leiksen TB-1118

Leiksen TB-1118 12-in-1 Steam Mop Instruction Manual

MODEL: TB-1118

1. Safety Information

Please read all instructions carefully before using your Leiksen TB-1118 12-in-1 Steam Mop. Keep this manual for future reference.

- **Hot Steam:** The steam produced is extremely hot. Always direct the steam away from yourself, other people, pets, and plants.
- **Water Only:** Use only distilled or demineralized water in the water tank to prevent mineral buildup and extend product life. Do not add any cleaning solutions, perfumes, or other chemicals to the water tank.
- **Electrical Safety:** Ensure the power cord is not damaged and always plug the appliance into a grounded outlet. Do not operate if the cord or plug is damaged.
- **Supervision:** Do not leave the steam mop unattended while it is powered on or producing steam.
- **Surface Compatibility:** Always test the steam mop on a small, inconspicuous area of the surface to be cleaned to ensure compatibility.

2. Product Overview

The Leiksen TB-1118 is a versatile 12-in-1 steam mop designed for various cleaning tasks using the natural power of steam.



Figure 1: Diagram illustrating the various components and accessories of the 12-in-1 Steam Mop.

Key Components:

- Handle
- Aluminum tube
- Power switch button
- Water tank
- Shaft
- Large round nylon brush
- Crevice brush
- Scraper head
- Small round nylon brush
- Bend nozzle
- Small round copper brush
- Straight nozzle
- Power cord
- Carpet frame
- Glass brush
- Measuring buckets
- Towel
- Mop pads (x2)

Features:

- **12-in-1 Versatility:** Transforms from an upright steam mop to a handheld steamer for cleaning various surfaces.
- **Rapid Heating:** Heats up in approximately 12 seconds, providing steam quickly for efficient cleaning.
- **Adjustable Angle:** The mop head can be adjusted up to 120 degrees for easy maneuverability under furniture and into corners.
- **Washable Pads:** Comes with reusable and washable microfiber pads for convenience and sustainability.
- **Simple Controls:** Easy-to-use controls for selecting daily or deep cleaning steam modes.

3. Setup

3.1 Assembly

Assemble the main body of the steam mop by connecting the handle and shaft components.



Figure 2: The steam mop features adjustable and removable tubes, allowing for different heights (3.7ft, 4.0ft, 4.36ft) to suit various cleaning needs.

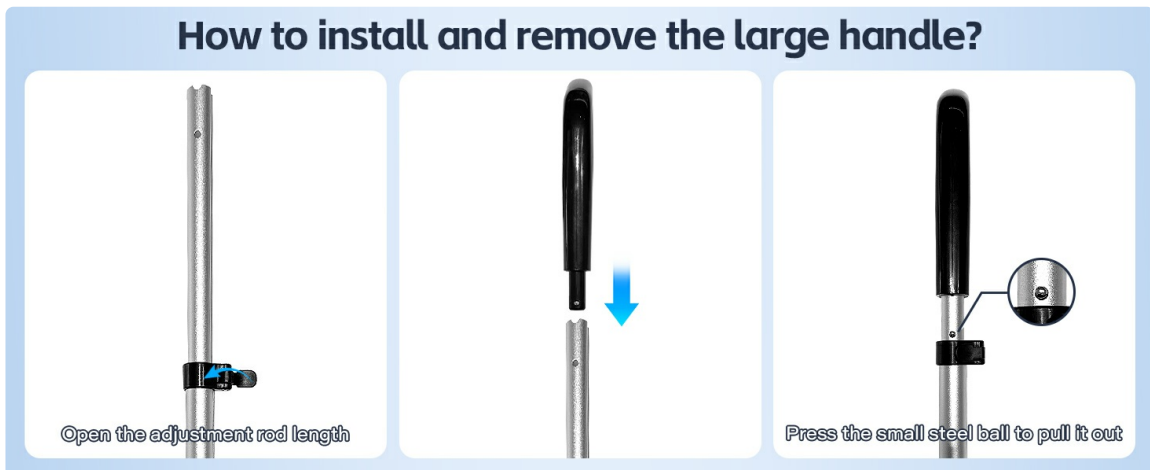


Figure 3: Steps to install and remove the large handle: open the adjustment rod length, insert the handle, and press the small steel ball to secure or release.

3.2 Attaching Accessories

For handheld use, attach the desired accessory to the main unit.

How to install accessories?



Figure 4: Guide for installing accessories: align the round hole and press down, find the two small black dots, aim and press upward, then rotate right after alignment.

3.3 Filling the Water Tank

Ensure the steam mop is unplugged before filling the water tank. Use the provided measuring cup to add distilled or demineralized water.



Figure 5: The steam mop features a larger capacity water tank for extended cleaning sessions. Fill the tank with water before use.

4. Operating Instructions

4.1 Powering On and Steam Modes

Plug the steam mop into a grounded electrical outlet. Press the power switch button to turn it on. Select your desired steam mode using the simple controls.

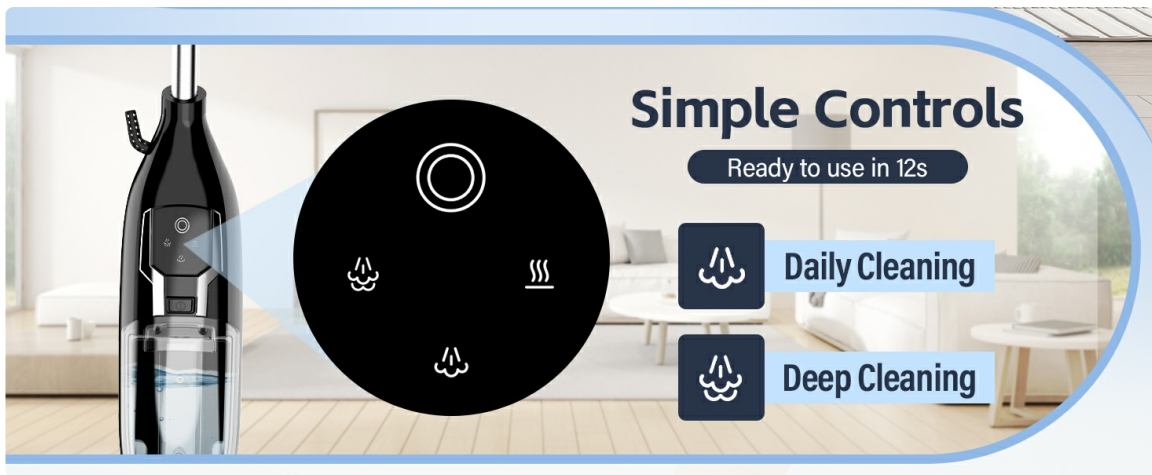


Figure 6: Simple controls allow selection between Daily Cleaning and Deep Cleaning modes. The device is ready to use in 12 seconds.

4.2 Using as an Upright Steam Mop

Attach a microfiber mop pad to the mop head. For carpet cleaning, attach the carpet glider over the mop pad. Move the mop slowly over the surface to allow the steam to penetrate and clean effectively.



Figure 7: For carpet steaming, attach the carpet glider. Note: Carpet gliders are only needed for carpets, not other floor types.



Figure 8: The steam mop effectively cleans various floor types, removing dirt and grime with ease.

4.3 Using as a Handheld Steamer with Attachments

Detach the main unit from the shaft to use it as a handheld steamer. Attach the appropriate accessory

for the specific cleaning task.



Figure 9: The versatile handheld unit can be used for cleaning windows, refreshing upholstery, and targeting specific floor areas.



Figure 10: Utilize specialized nozzles for deep cleaning carpets and grout lines on tile floors.



Figure 11: The handheld steamer is effective for sanitizing and cleaning kitchen surfaces such as stoves and sinks.



Figure 12: Easily clean windows and refresh garments with the appropriate handheld attachments.

Video 1: This video demonstrates various applications of the Leiksen 12-in-1 Steam Mop, showcasing its versatility for different cleaning tasks around the home.

5. Maintenance

5.1 Cleaning Mop Pads

The microfiber mop pads are reusable and washable. Remove them from the mop head after use and wash them according to their care instructions.



Figure 13: Mop pads are easy to install and remove, and are washable for repeated use.

5.2 Descaling

To prevent mineral buildup, especially if using tap water (though distilled water is recommended), periodically descale your steam mop. Consult the full user manual for detailed descaling instructions.

6. Troubleshooting

- **No Steam:** Ensure the water tank is filled and the device is properly plugged in and powered on. Check that the steam mode is selected.
- **Low Steam:** The water tank might be low, or there could be mineral buildup. Refill the tank or perform descaling.
- **Water Leaking:** Ensure all attachments are securely fastened and the water tank cap is tightly closed.

7. Specifications

- **Brand:** Leiksen
- **Model Number:** TB-1118
- **Color:** Black
- **Power Source:** Electric
- **Form Factor:** Upright, Handheld
- **Tank Volume:** 600 Milliliters
- **Item Weight:** 6.14 pounds
- **Product Dimensions:** 11.92 x 6.49 x 47.24 inches
- **Surface Recommendation:** Floor, Counter Top, Window

8. Warranty and Support

For warranty information, technical support, or to purchase replacement parts and accessories, please refer to the contact details provided in your product packaging or visit the official Leiksen website.