

yAyusi C19

yAyusi 70.9" Auto Face Tracking Tripod with Lights - Model C19 Instruction Manual

Brand: yAyusi | Model: C19

PRODUCT OVERVIEW

This instruction manual provides detailed guidance for the yAyusi 70.9" Auto Face Tracking Tripod, Model C19. This device features 360° automatic face and body tracking, integrated lighting, and a versatile 3-in-1 design functioning as a floor tripod, desk tripod, and selfie stick. It is designed to enhance video recording, live streaming, and photography without requiring third-party applications.

Key Features:

- **360° Smart Auto Tracking:** Built-in AI camera for real-time face and body tracking without external apps.
- **Integrated Lighting:** Two detachable ring lights with 3 color modes (cold, natural, warm) and 10 brightness levels.
- **3-in-1 Versatility:** Functions as a floor tripod, desk tripod, and selfie stick.
- **Adjustable Height:** Main pole extends from 15.7" to 70.9", bottom pole extends up to 8.6".
- **Universal Compatibility:** Standard 1/4" thread for various accessories; phone holder fits smartphones 4"-7" wide.
- **Remote Control:** Bluetooth remote for convenient photo and video capture.

WHAT'S IN THE BOX

- 1 x Auto Face Tracking Tripod
- 1 x Remote Control
- 2 x Fill Lights
- 1 x Product Manual
- 1 x Storage Bag



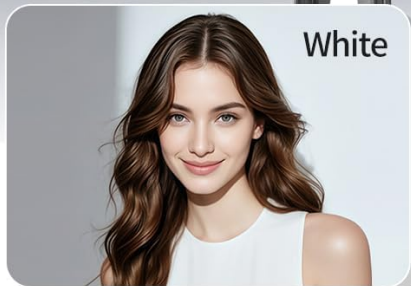
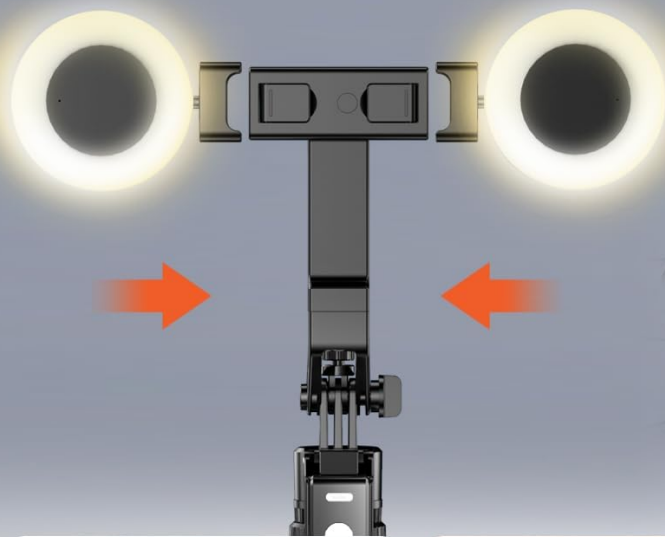
Image: Package contents showing the tripod, remote control, two fill lights, product manual, and a storage bag.

SETUP INSTRUCTIONS

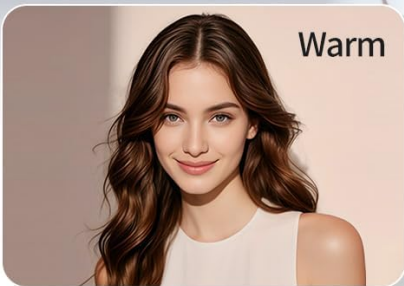
1. **Unfold the Tripod:** Gently spread the tripod legs until they are fully extended and stable. Ensure the main pole lock is secure.
2. **Adjust Height:** Loosen the main pole telescopic lock and extend the main pole to your desired height (15.7" to 70.9"). Tighten the lock to secure. The bottom pole can also be extended up to 8.6" for additional height.
3. **Attach Phone Holder:** The phone holder is integrated. Ensure it is securely positioned. It can be rotated 360 degrees horizontally and vertically for optimal viewing angles.
4. **Insert Smartphone:** Gently pull apart the phone holder grips and insert your smartphone. The holder accommodates phones 4" to 7" wide. Ensure the phone is centered and secure.
5. **Attach Fill Lights:** The two fill lights are detachable. Attach them to the designated ring light interfaces on the phone holder as needed.
6. **Charge Components:** Ensure the tripod's internal battery and the fill lights are fully charged before first use.

Dual Fill Lights with Memory Function

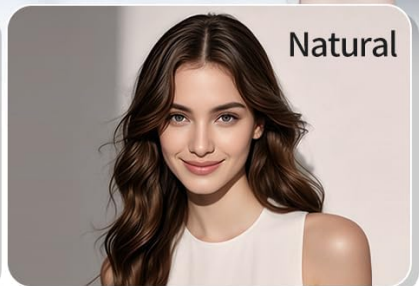
- 3 Color Modes
- 3 Brightness Levels
- 9 Light Options



White



Warm



Natural

Image: Close-up of the tripod highlighting key components like the AI camera, 1/4 inch interface, main rod lock, and tripod lock for secure setup.

New Upgraded Retractable Pole Lock Design



Image: Illustration of the tripod's retractable pole lock design, detailing how to secure the main pole and extend the tripod for stability.

OPERATING INSTRUCTIONS

1. Powering On/Off

- To power on the tripod, press and hold the power button on the main unit until the indicator light illuminates.
- To power off, press and hold the power button again until the indicator light turns off.

2. Auto Face/Body Tracking

- Once powered on, the built-in AI camera will automatically detect and track faces or bodies within its field of view.
- The tripod will rotate 360° to follow your movement, keeping you centered in the frame.
- No app is required for this feature.

AI Perfectly Tracks Faces and Movements



Image: The tripod actively tracking a person's face, demonstrating its AI capabilities. Gesture controls for starting and stopping tracking are also shown.

3-in-1 Selfie Stick Tripod

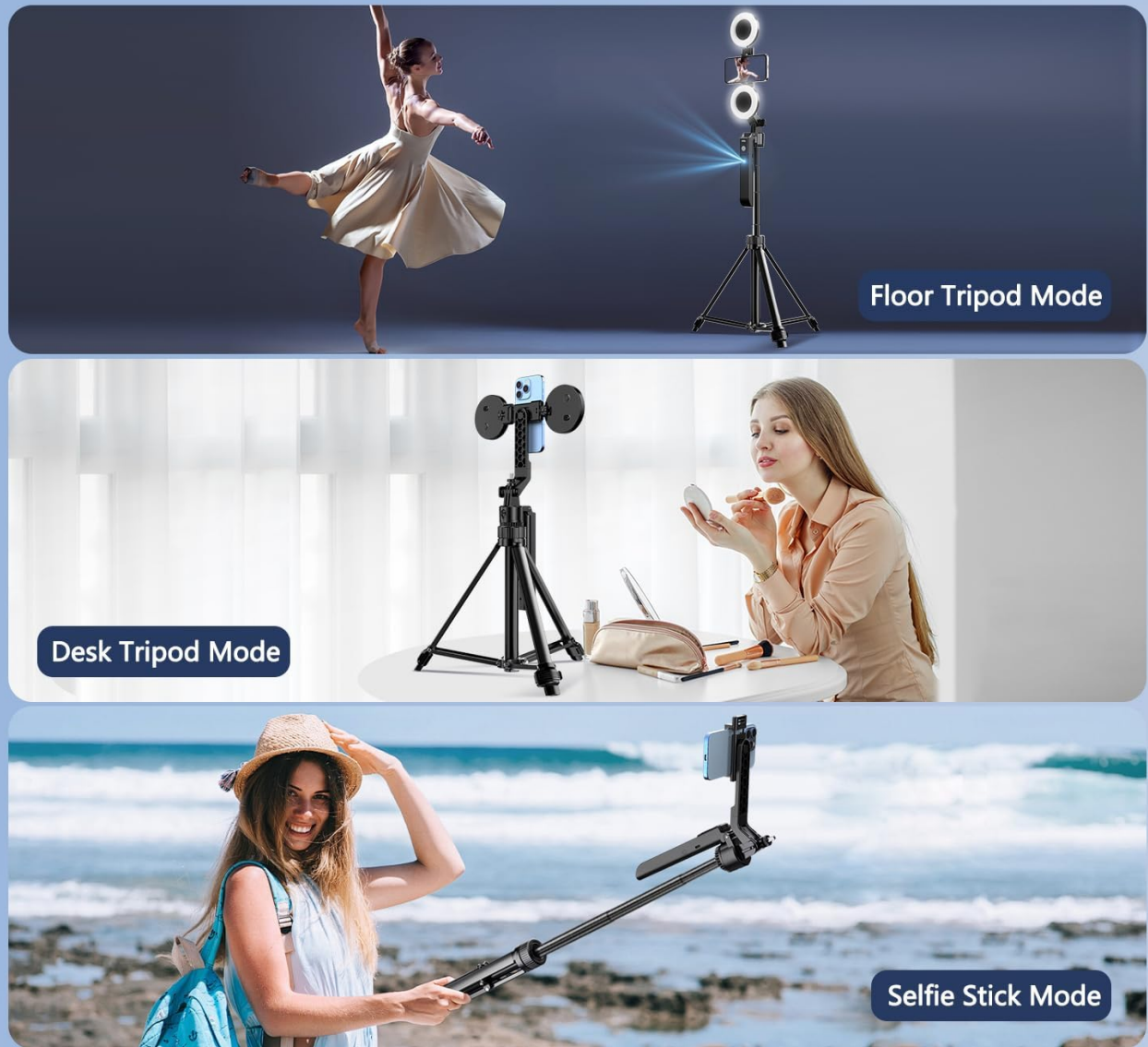


Image: The tripod tracking a subject during a dynamic activity, showcasing its 360° rotation for continuous capture.

3. Using the Remote Control

- The remote control is stored within the tripod's main unit. Slide it out to use.
- To pair the remote with your smartphone, turn on the remote (slide the power button on the side). Activate Bluetooth on your phone and select the device (usually named "SelfieCom" or similar) to pair.
- Press the large button on the remote to take photos or start/stop video recording on your connected smartphone.

4. Adjusting Fill Lights

- Each fill light has its own power button and controls.
- Press the power button on each light to turn it on/off.
- Cycle through 3 color modes (cold, natural, warm) and 10 brightness levels by pressing the mode button.



Image: Comparison showing the effect of the dual fill lights, improving lighting for video and photography.

Dual Fill Lights with Memory Function

- 3 Color Modes
- 3 Brightness Levels
- 9 Light Options

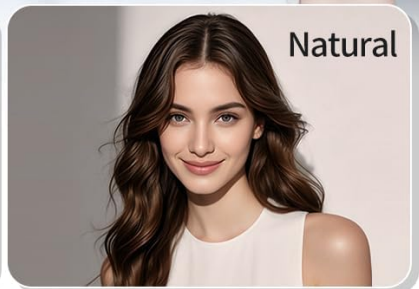
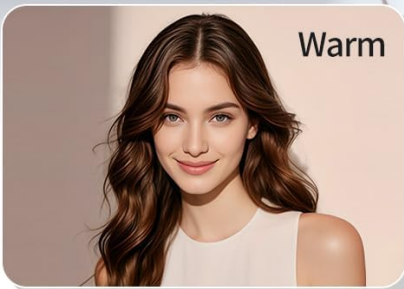
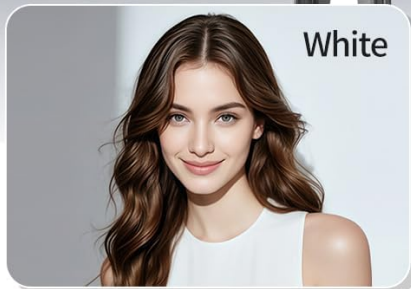
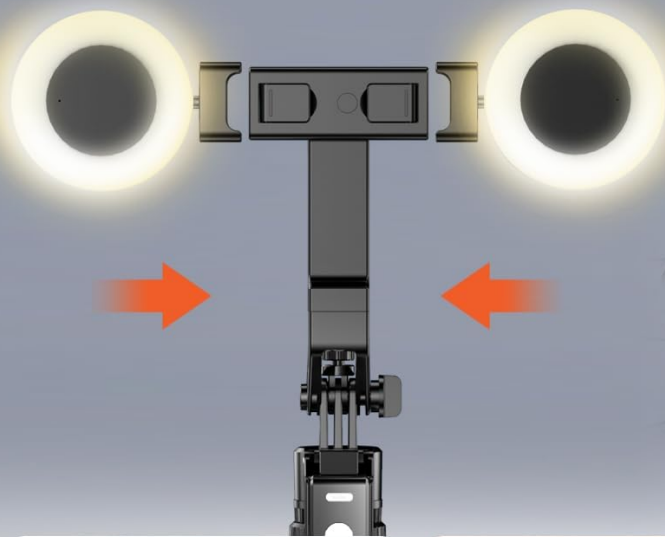


Image: The dual fill lights in action, illustrating the three available color modes: white, warm, and natural.

5. Using as Selfie Stick or Desk Tripod

- **Selfie Stick Mode:** Fold the tripod legs together to form a handle. Extend the main pole to your desired length.
- **Desk Tripod Mode:** Keep the main pole at a shorter length and extend the tripod legs for stable placement on a desk or flat surface.



Image: The tripod configured in its three primary modes: floor tripod, desktop tripod, and selfie stick, illustrating its adaptable design.

MAINTENANCE

- Keep the tripod clean by wiping it with a soft, dry cloth.
- Avoid exposing the device to extreme temperatures, moisture, or direct sunlight for prolonged periods.
- Store the tripod in its provided storage bag when not in use to protect it from dust and scratches.
- Regularly check all locks and connections to ensure they are secure.

TROUBLESHOOTING

- **Device not powering on:** Ensure the internal battery is charged. Connect to a power source using the provided charging cable.
- **Tracking not working:** Ensure the AI camera lens is clean and unobstructed. Verify the device is powered on. Ensure there is sufficient lighting for the AI to detect faces/bodies.
- **Remote not connecting:** Ensure the remote is powered on and your phone's Bluetooth is active. Try re-pairing the remote in your phone's Bluetooth settings.

- **Fill lights not working:** Ensure the fill lights are charged and powered on individually.
- **Tripod unstable:** Ensure all pole locks are tightened and the tripod legs are fully extended on a flat, stable surface.

SPECIFICATIONS

Brand	yAyusi
Model Name	C19
Maximum Height	70.9 inches (180 cm)
Minimum Height	15.7 inches
Item Weight	1.63 pounds
Weight Limit	4.4 Pounds
Material	Aluminum
Color	Black
Compatible Devices	Camera, Smartphone (4"-7" width)
Special Features	Face Tracking, Foldable, Gesture Control, Remote Control, Telescopic
Batteries	1 A battery required (included)

WARRANTY AND SUPPORT

yAyusi provides **2 years of after-sales service** for this product. If you encounter any issues or have questions regarding your yAyusi Auto Face Tracking Tripod, please contact our customer support team immediately. Our goal is to ensure every customer is satisfied. If you are not satisfied, we will provide a 100% refund.

For support, please refer to the contact information provided in the product manual included in your package or visit the official yAyusi website.