

QDVOPHZA ZNJJ-032B

QDVOPHZA Tuya Smart Life 8CH 3MP/5MP Wireless NVR Security System User Manual

Model: ZNJJ-032B | Brand: QDVOPHZA

1. INTRODUCTION

Thank you for choosing the QDVOPHZA Tuya Smart Life 8CH 3MP/5MP Wireless NVR Security System. This system provides comprehensive video surveillance with high-definition cameras, wireless connectivity, and smart features for reliable monitoring of your property. This manual will guide you through the setup, operation, and maintenance of your security system.

2. PACKAGE CONTENTS

Please check the package contents carefully. If any items are missing or damaged, contact your retailer.

- 1 x 8-Channel Wireless NVR (Network Video Recorder)
- 8 x 3MP or 5MP Wireless IP Cameras (Quantity and resolution may vary based on purchased variant)
- 9 x Power Adapters (1 for NVR, 8 for cameras)
- 1 x USB Mouse
- 1 x Ethernet Cable
- Mounting Screw Kits
- User Manual (This document)

3. KEY FEATURES

- **High-Definition Surveillance:** 8-channel NVR supports 3MP or 5MP cameras for clear visual clarity.
- **Wireless Connectivity:** WIFI support for easy remote monitoring without complex wiring.
- **Robust Design:** Cameras feature a durable metal shell and IP66 waterproof rating for indoor and outdoor use.
- **Smart Motion Detection:** Built-in humanoid recognition and intelligent motion detection with instant mobile app notifications and email alerts.
- **Remote Access:** View live video and recordings remotely via the Tuya Smart or Smart Life mobile application.
- **Efficient Video Compression:** H.265 video recording for optimized storage.
- **Storage & Backup:** NVR supports up to 6TB HDD (not included) and USB 2.0 for backup.
- **Wide Angle Lens:** Camera focal length of 3.6mm with a 105° viewing angle.

4. SETUP GUIDE

4.1 Initial Power-up

1. Connect the NVR to a power source using its dedicated power adapter.
2. Connect the NVR to a monitor via HDMI or VGA cable (not included) to view the interface.
3. Connect the USB mouse to the NVR for navigation.
4. Connect each camera to its respective power adapter and plug them into a power outlet.
5. Allow a few minutes for the NVR and cameras to boot up and establish a connection. The cameras are pre-paired with the NVR.

4.2 Hard Drive Installation (Optional)

The NVR supports a 3.5-inch SATA hard drive (up to 6TB) for video storage.

1. Unscrew and remove the top cover of the NVR.
2. Connect the SATA data and power cables from the NVR to the hard drive.
3. Secure the hard drive to the NVR chassis using the provided screws.
4. Replace the NVR cover and screw it back into place.
5. Upon first boot with a new HDD, the system may prompt you to format the drive. Follow the on-screen instructions.

4.3 Network Connection

The NVR can connect to your network via Ethernet or Wi-Fi.

- **Ethernet Connection:** Connect an Ethernet cable from the NVR's LAN port to your router. The NVR will automatically obtain an IP address via DHCP.
- **Wi-Fi Connection:** On the NVR's monitor interface, navigate to Network Settings. Select your Wi-Fi network, enter the password, and connect.

Wireless Transmission

No need for network cable
Ultra long distance transmission
Ignore the obstacles of the wall

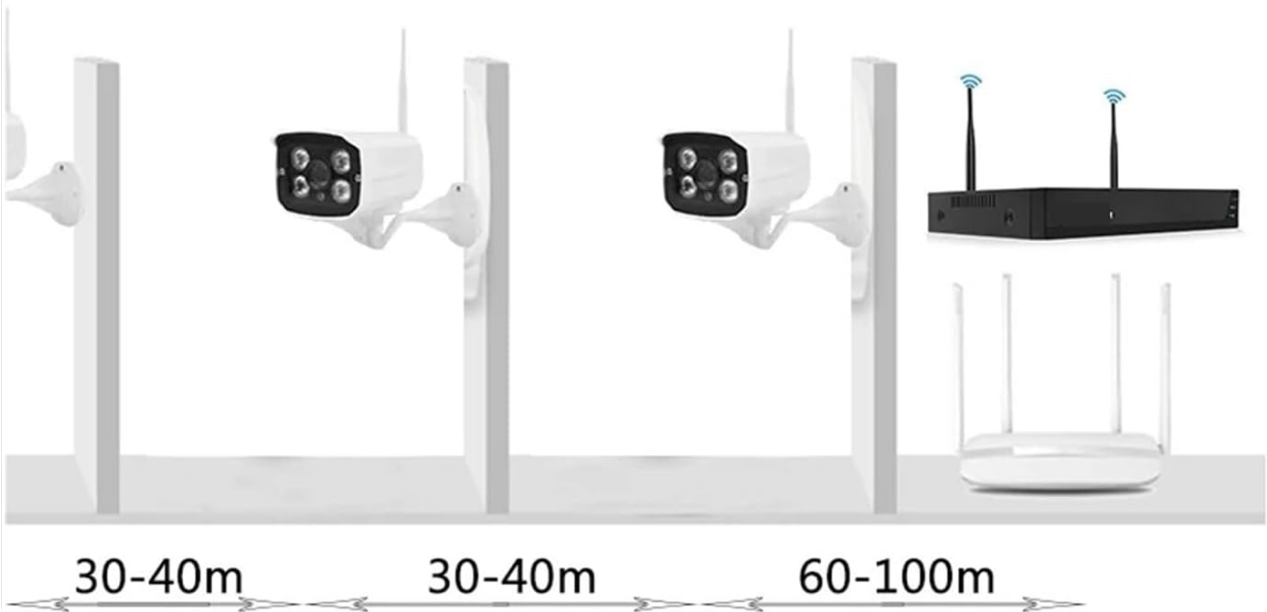


Image: Wireless Transmission Diagram. This image illustrates the effective wireless transmission range between the cameras and the NVR, indicating that no network cable is needed for camera connection and showing typical distances for signal penetration through walls.

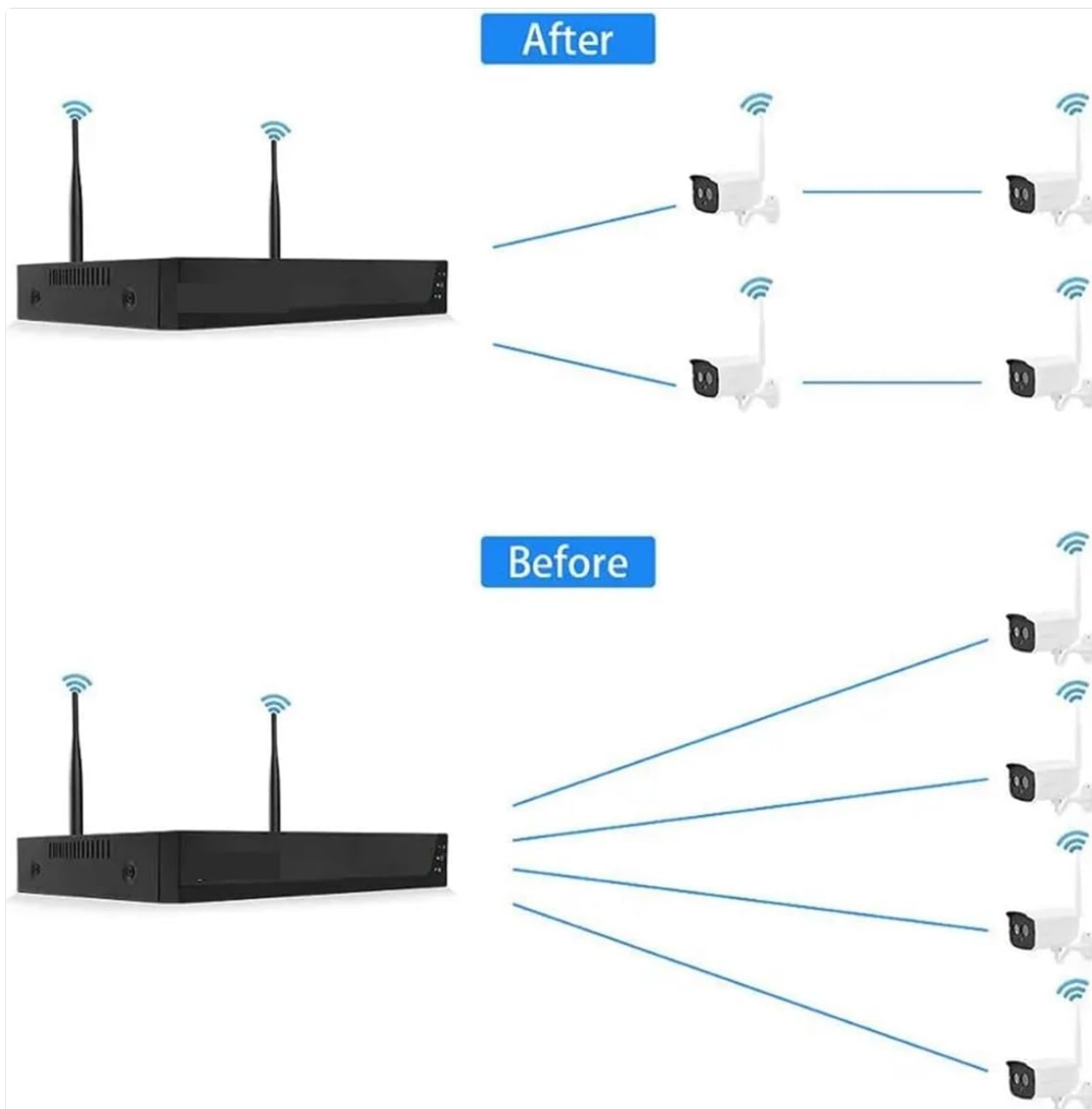


Image: Wireless Connection Optimization. This diagram shows a "Before" and "After" comparison of camera connections to the NVR, suggesting an optimized setup for wireless signal distribution to multiple cameras.

4.4 Mobile App Setup

1. Download the **Tuya Smart** app or **Smart Life** app from your mobile device's app store (iOS App Store or Google Play Store).
2. Register for a new account or log in if you already have one.
3. On the app, tap "Add Device" or the "+" icon.
4. Select "Video Surveillance" or "Smart Camera" and follow the on-screen instructions to add your NVR system. You may need to scan a QR code displayed on the NVR's monitor.
5. Once added, you can view live feeds and manage your system remotely.

5. OPERATING INSTRUCTIONS

5.1 Live View

After successful setup, you can view live video feeds from your cameras on the NVR's connected monitor or through the Tuya Smart/Smart Life mobile app.

- **On NVR:** The main interface displays all camera feeds. Use the mouse to select specific cameras for a larger view.
- **On Mobile App:** Open the app, select your NVR device, and tap on the camera channels to view live streams.

5.2 Video Recording

The system supports continuous recording, scheduled recording, and motion-triggered recording. Ensure a hard drive is installed for recording.

- **Configure Recording:** Access the NVR's menu (right-click with mouse) and navigate to "Record Settings" to set your preferred recording schedule and mode for each camera.
- **H.265 Compression:** The system uses H.265 video compression to maximize storage efficiency while maintaining video quality.

5.3 Playback

Review recorded footage from the NVR or the mobile app.

- **On NVR:** From the main menu, select "Playback." Choose the date, time, and camera channel to view recordings.
- **On Mobile App:** In the app, select the NVR device, then navigate to the "Playback" or "History" section to access recorded videos.

5.4 Motion Detection and Alerts

The system features intelligent motion detection, including humanoid recognition, to alert you to suspicious activity.

MOTION DETECTION INTELLIGENT ALARM

Push alarm message to mobile phone
when abnormal situation occurs at home



Image: Motion Detection Intelligent Alarm. This image depicts a security camera with a red detection zone, highlighting its ability to detect human movement and trigger an alarm, sending notifications to a mobile phone.

- **Enable Motion Detection:** Go to the NVR's menu, then "Alarm" or "Motion Detection" settings. Configure detection zones, sensitivity, and alarm actions (e.g., record, send email).
- **Email Alerts:** Set up email notification recipients in the NVR's network settings to receive instant alerts when motion is detected.
- **Mobile App Notifications:** Ensure push notifications are enabled for the Tuya Smart/Smart Life app on your mobile device to receive real-time alerts.

5.5 USB Backup

You can back up important video footage to a USB flash drive.

1. Insert a USB flash drive into the NVR's USB 2.0 port.
2. From the NVR's menu, navigate to "Backup."
3. Select the desired camera, date, and time range for the footage you wish to back up.
4. Follow the on-screen prompts to initiate the backup process.

6. MAINTENANCE

6.1 Camera Care



Image: IP66 Waterproof Camera. This image demonstrates the camera's IP66 waterproof rating, showing it functioning reliably outdoors even in rainy conditions, ensuring durability against environmental elements.

- **Cleaning:** Regularly clean the camera lenses with a soft, damp cloth to ensure clear image quality. Avoid abrasive cleaners.
- **Weather Protection:** While cameras are IP66 waterproof, ensure they are mounted securely and cables are properly sealed to prevent water ingress over time.
- **Physical Inspection:** Periodically check camera mounts and connections for any signs of wear or damage.

6.2 NVR Care

- **Ventilation:** Ensure the NVR is placed in a well-ventilated area to prevent overheating. Do not block ventilation openings.

- **Dust Removal:** Periodically clean the NVR's exterior and vents to prevent dust buildup.
- **Firmware Updates:** Check the manufacturer's website or the Tuya Smart/Smart Life app for available firmware updates to ensure optimal performance and security.

7. TROUBLESHOOTING

Problem	Possible Cause	Solution
No video display on monitor	NVR not powered on; Monitor cable loose; Incorrect input source on monitor.	Check NVR power adapter; Ensure HDMI/VGA cable is securely connected; Select correct input source on monitor.
Cameras not connecting to NVR	Cameras not powered; Out of range; Signal interference.	Ensure cameras are powered; Relocate cameras closer to NVR; Reduce obstacles between cameras and NVR.
No remote viewing via app	NVR not connected to internet; App not configured correctly; Incorrect login credentials.	Check NVR's network connection; Verify app settings and NVR pairing; Re-enter login details.
No recording	No hard drive installed; Hard drive full or faulty; Recording schedule not set.	Install a compatible HDD; Format or replace HDD; Configure recording schedule in NVR settings.
Motion detection alerts not received	Motion detection disabled; Incorrect alert settings; App notifications blocked.	Enable motion detection and configure zones; Check email/app notification settings; Ensure app has notification permissions.

8. SPECIFICATIONS

Feature	Detail
NVR Model Number	ZNJJ-032B
Video Input	8 Channels
Camera Resolution Options	3MP / 5MP
Number of Cameras	8 PCS
Smart Home Platform	Tuya Smart / Smart Life
Camera Focal Length	3.6mm

Feature	Detail
Camera Viewing Angle	105°
Video Compression	H.265
Camera Waterproof Rating	IP66
HDD Support	1 SATA Port, up to 6TB (HDD not included)
USB Ports	1 x USB 2.0 Port
Power Supply	DC12V1A (for NVR and cameras)
Certification	CE
Assembly Required	No (for core system, HDD installation is optional)

9. WARRANTY INFORMATION

Specific warranty details for the QDVOPHZA Tuya Smart Life 8CH 3MP/5MP Wireless NVR Security System are not provided in the product information. Please refer to the warranty policy provided by your retailer or contact the manufacturer directly for detailed warranty terms and conditions.

10. CUSTOMER SUPPORT

For technical assistance, troubleshooting, or any questions regarding your QDVOPHZA Tuya Smart Life 8CH 3MP/5MP Wireless NVR Security System, please contact the retailer from whom you purchased the product. You may also find support resources within the Tuya Smart or Smart Life mobile applications.