

Cidava 10.4 Inch HD Touch Screen Android Head Unit

Cidava 10.4 Inch Android Head Unit for Honda Civic (2016-2019) Instruction Manual

1. INTRODUCTION

This manual provides detailed instructions for the installation, operation, and maintenance of your Cidava 10.4 Inch HD Touch Screen Android Head Unit. This unit is specifically designed as a replacement for the factory display screen and climate control center in Honda Civic models from 2016 to 2019, enhancing your vehicle's dashboard with advanced features and a modern interface.

Please read this manual thoroughly before installation and use to ensure proper functionality and to maximize your experience with the product. Keep this manual for future reference.

For Honda Civic 2016 2017 2018 2019



The Cidava 10.4 Inch Android Head Unit seamlessly integrated into a Honda Civic dashboard, showcasing the enhanced display compared to the original factory unit.

2. PRODUCT FEATURES

The Cidava Android Head Unit offers a wide array of features designed to upgrade your driving experience:

- **10.4 Inch HD Multi-Touch Screen:** A large, responsive display for intuitive control.
- **Android Operating System:** Provides access to a vast ecosystem of applications.
- **Wired CarPlay & Android Auto (PhoneLink):** Seamless smartphone integration for navigation, music, and communication.
- **GPS Navigation:** Built-in Wi-Fi module for online Google Maps and support for offline maps.
- **Built-in Bluetooth 5.0 with APTX:** For high-quality, loss-less music streaming and hands-free calling.
- **AM/FM Radio with RDS:** Includes 12 FM presets, 6 AM presets, and 'My Favorite Stations' feature.
- **Climate Control Integration:** Full control over AC, fan speed, and temperature directly from the head unit.
- **Camera System Support:** Integrates with factory backup camera, blind spot camera, and supports optional

multi-view camera inputs.

- **HDMI Out:** Enables video output to external displays for rear seat entertainment systems.
- **High Performance:** 64GB Memory, 4GB RAM, and a 4x45 Watt built-in amplifier with DSP & EQ.

Carplay & Android Auto

● Phone calls, Messages, Navigation, Music...

Carplay **Android Auto**

**** ONLY Support Wired Carplay and Android Auto ****

Wired CarPlay and Android Auto provide seamless integration with your smartphone for enhanced in-car functionality.

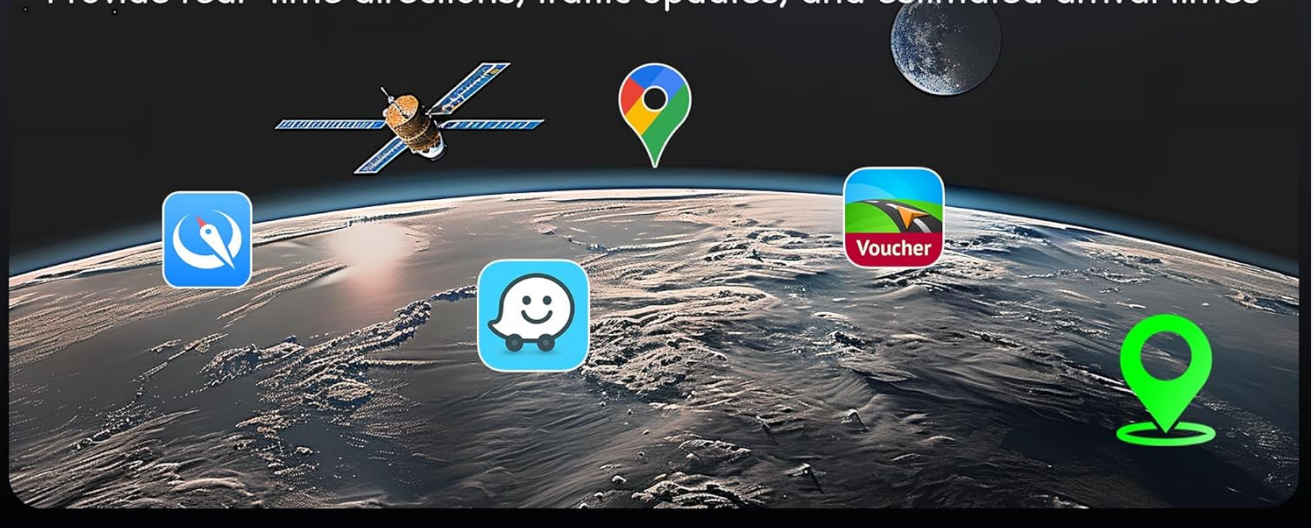
Built-in Bluetooth 5.0

Make and receive phone calls without taking their hands off the wheel



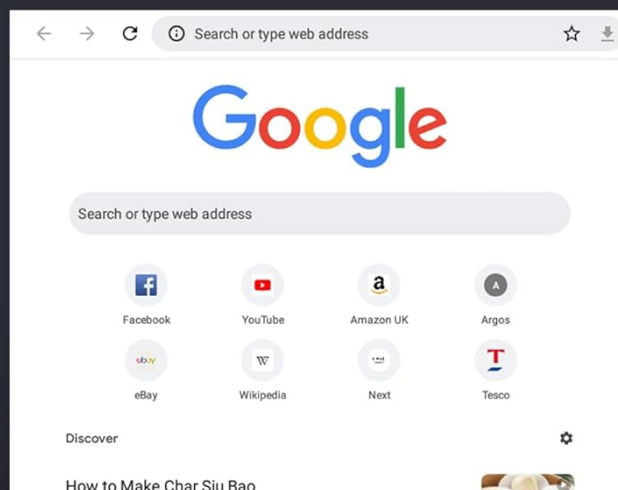
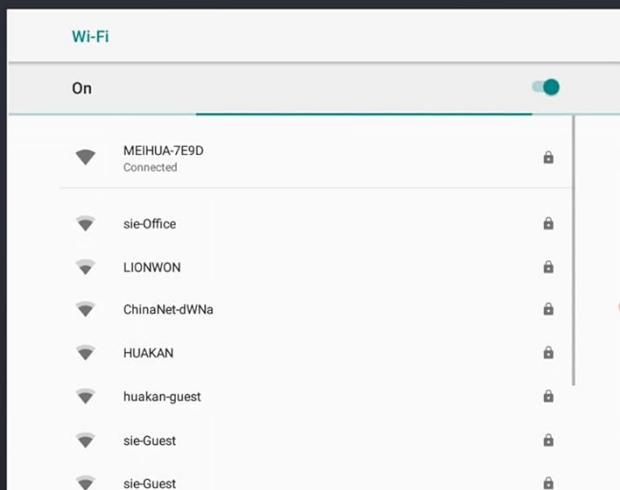
GPS Navigation

Provide real-time directions, traffic updates, and estimated arrival times



Enjoy built-in Bluetooth 5.0 for audio streaming and hands-free calls, along with reliable GPS navigation.

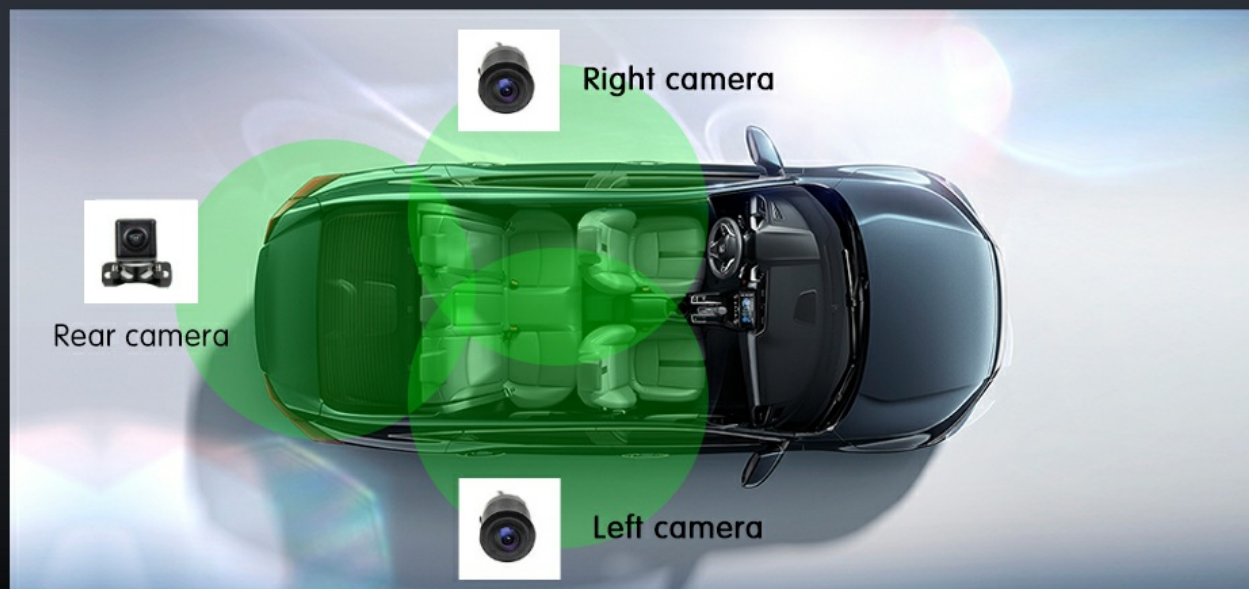
WiFi Connection



Connect to Wi-Fi via your phone's hotspot to access online services, browse the web, and download apps.

Support Multi-View Camera

Three dedicated camera inputs for optional front, rear, and passenger-side camera views.



The reverse camera switches when the vehicle shifts into reverse gear, the right side camera when the right turn signal is applied, and the front camera is manually operated

Access the Google Play Store to download and install your favorite applications directly on the head unit.

3. INSTALLATION AND SETUP

3.1 Included Components

Your Cidava head unit package includes the following items:

- Cidava 10.4 Inch HD Touch Screen Android Head Unit Replacement
- Main Harness Adaptor
- RCA Audio Output Cables
- Cam Inputs (for various cameras)
- AUX Input Cable
- 10P USB Line
- 8P USB Harness
- Radio Cable Adapter
- USB Cables (x2)
- Radio Cable
- DVR Cable
- WiFi Antenna
- Canbox
- Install Kits
- GPS Antenna
- Microphone



All components and harnesses included with your Cidava head unit for a complete installation.

3.2 Wiring and Connections

Carefully connect the provided harnesses to the corresponding ports on the head unit and your vehicle's wiring system. Ensure all connections are secure to prevent electrical issues or signal loss. Refer to the detailed wiring diagram below for specific connections.



Detailed plug description for connecting the Cidava head unit to your vehicle's systems.

3.3 Post-Installation Check

After installation, perform the following checks:

1. Turn on the vehicle and verify the head unit powers on correctly.
2. Test all integrated features: radio, Bluetooth, Wi-Fi, navigation, and climate controls.
3. Check the functionality of the steering wheel controls.
4. Verify that the factory backup camera and blind spot camera (if applicable) display correctly.

Your browser does not support the video tag.

Watch a demonstration of the Cidava Car Radio for Honda Civic 2016-2019 after installation, showcasing its features and integration with the vehicle's systems.

4. OPERATING INSTRUCTIONS

4.1 Touch Screen Interface

The head unit features a responsive multi-touch screen. Navigate through menus, select applications, and control settings by tapping, swiping, and pinching gestures similar to a smartphone or tablet.

4.2 Radio Operation

Access the AM/FM radio application from the main menu. You can scan for stations, save presets (12 FM, 6 AM), and manage your 'My Favorite Stations'. The unit supports RDS (Radio Data System) for displaying station information.

4.3 Bluetooth Connectivity

Pair your smartphone via Bluetooth 5.0 for hands-free calling and high-quality audio streaming. Access your phone's contacts and call history directly from the head unit. The APTX codec ensures superior sound quality.

4.4 Wi-Fi Connection

Connect the head unit to a Wi-Fi network, typically by using your smartphone's hotspot. This enables access to online features such as Google Maps, app downloads from the Google Play Store, and web browsing.

4.5 GPS Navigation

Utilize the built-in GPS module for navigation. With a Wi-Fi connection, you can use online mapping services like Google Maps. The unit also supports downloading offline maps for navigation without an internet connection.

4.6 CarPlay & Android Auto (PhoneLink)

Connect your iPhone or Android smartphone via a USB cable to activate Wired CarPlay or Android Auto. This allows you to access compatible apps, make calls, send messages, and use navigation directly from your phone's interface on the head unit screen.

4.7 Climate Control Integration

The head unit fully integrates with your Honda Civic's climate control system. You can adjust the air conditioning, fan speed, temperature, and air direction directly from the touch screen interface, replacing the factory climate controls.

Retain Factory Car Features

NOTE: If your original car does not have these features, they will not be added



Steering Wheel Control



Factory USB/AUX Port



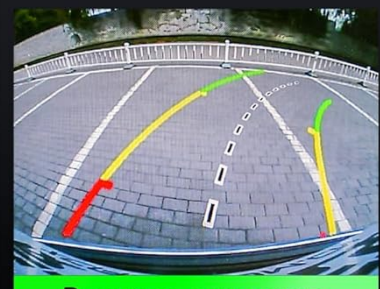
Seat Heaters/Coolers



Factory Parking Sensors



Vehicles Factory 360 Camera



Reverse cameras
(May need additional interfaces)

The Cidava head unit retains and integrates essential factory car features for a seamless upgrade.

4.8 Camera System Integration

The unit supports your vehicle's existing factory backup camera and blind spot camera. Additionally, it provides three dedicated camera inputs for optional front, rear, and passenger-side camera views, enhancing parking and maneuvering safety.

PLUG DESCRIPTION



The head unit supports multi-view camera systems, including dedicated inputs for front, rear, and side cameras.

4.9 Rear Seat Entertainment System

Utilize the HDMI Out port to connect external displays, enabling video output to rear seat monitors for passenger entertainment.

Rear Seat Entertainment System

Enables videos output to external displays, make a seamless connection for entertainment systems



Connect external displays for a comprehensive rear seat entertainment experience.

5. MAINTENANCE

5.1 Cleaning the Screen

Use a soft, lint-free cloth to gently wipe the touch screen. For stubborn smudges, slightly dampen the cloth with water or a screen-safe cleaner. Avoid harsh chemicals or abrasive materials that could damage the screen surface.

5.2 Software Updates

Periodically check for software updates to ensure optimal performance and access to the latest features. Updates can typically be performed via Wi-Fi connection or USB. Refer to the online support resources for detailed instructions on updating your specific model.

6. TROUBLESHOOTING

6.1 Common Issues and Solutions

- **No Power:** Check all power connections and fuses. Ensure the vehicle's ignition is on.
- **No Sound:** Verify speaker connections, volume settings, and audio source selection.
- **Touch Screen Unresponsive:** Try restarting the unit. If the issue persists, a factory reset might be necessary (consult support).
- **GPS Signal Loss:** Ensure the GPS antenna is properly installed and has a clear view of the sky.
- **Wi-Fi/Bluetooth Connection Issues:** Restart the head unit and your connected device. Ensure correct pairing procedures are followed.
- **CarPlay/Android Auto Not Connecting:** Ensure you are using a high-quality USB cable. Check your phone's settings for CarPlay/Android Auto permissions.

6.2 Frequently Asked Questions

- **Why haven't I received a reply after 24 hours?** It could be due to time differences or your message landing in the spam folder. Please write to us again; we'll ensure your query is addressed promptly.
- **What if my order is past the Amazon return window?** Contact us using the official address provided in the manual for further assistance.
- **How can I get the user manual?** We will send you an email attaching the user manual when the order is complete. We have also updated the detailed installation video on the product page and YouTube.

7. SPECIFICATIONS

Feature	Specification
Brand	Cidava
Vehicle Service Type	Car
Screen Size	10.4 Inches
Resolution	1280 x 720
Operating System	Android
Memory Storage Capacity	64 GB
RAM	4 GB
Connectivity Technology	Bluetooth, USB, Wi-Fi
Special Features	Android Auto, Apple CarPlay, Built-In Bluetooth, Built-In Wi-Fi
Map Type	Road
Supported Satellite Navigation System	GPS
Audio Output Mode	Stereo
Amplifier	4x45 Watt built-in amplifier with DSP & EQ
Mounting Type	Dashboard Mount

Feature	Specification
Human-Interface Input	Touchscreen
Control Method	App, Touch, Voice
Compatible Devices	Smartphone
Model Year	2019 (for compatibility reference)

8. WARRANTY AND SUPPORT

8.1 Warranty Information

This product comes with a **one-year warranty** from the date of purchase. This warranty covers manufacturing defects and ensures the product functions as intended under normal use. Please retain your proof of purchase for warranty claims.

8.2 Return Policy

A **30-day replacement** is provided with this Civic head unit for exchanges or refunds, subject to the terms and conditions of your purchase platform.

8.3 Customer Support

Cidava is committed to providing excellent customer service. We offer **lifetime after-sales service and technical support** for your product. If you have any questions, encounter issues, or require assistance, please do not hesitate to contact us:

- **Via Amazon:** Contact us through the Amazon messaging system.
- **Via Email:** Radiotechsd06@gmail.com

We aim to respond to all inquiries within 24 hours.