

XR-016

Dishwasher Door Latch Switch

INSTRUCTION MANUAL

Product Overview

This manual provides essential information for the installation, function, and maintenance of the 17476000012184 Dishwasher Door Latch Switch. This component is a critical safety and sealing mechanism for your dishwasher door.

It is designed as a direct replacement for original part numbers 1747600000004 and AP7175456.

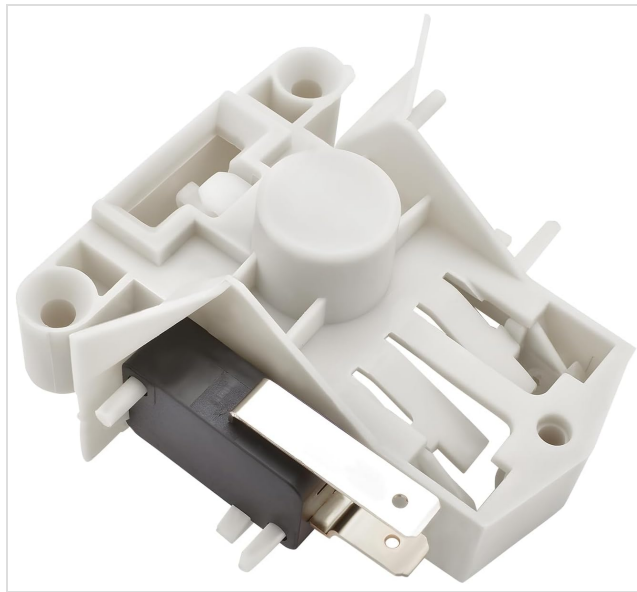


Image: The 17476000012184 Dishwasher Door Latch Switch, a white plastic component with a black electrical switch and metal contacts.

Compatibility

This door latch switch is compatible with various Midea and INSIGNIA dishwasher models. Please verify your dishwasher's model number against the list below to ensure compatibility.

Compatible with

NSDWR2WH8	NSDWR2BS8	SDWH1SS9
NSDWH2SS8	NSDWR2SS8	MDT24H2AST
MDT24H3AST	003719075	003719074
MDT24X2APR	CDW2FCMB	SDW2FCMS
NSDWH1WH9	NSDWH2BS8	NSDWR3SS1
SDW2FCMW	SDW2FCMB	CDW2FCMSS
SDF24P2AST	DF24P2ABB	SDF24P2AWW
CS14EFSBK1RCM		

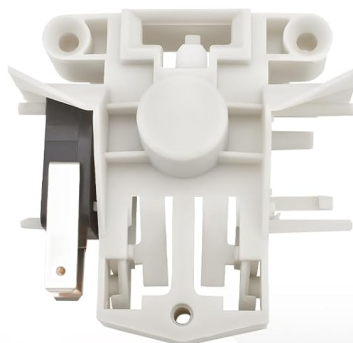


Image: A graphic displaying the door latch switch alongside a list of compatible dishwasher models, including NSDWR2WH8, NSDWR2BS8, SDWH1SS9, NSDWH2SS8, NSDWR2SS8, MDT24H2AST, MDT24H3AST, 003719075, 003719074, MDT24X2APR, CDW2FCMB, SDW2FCMS, NSDWH1WH9, NSDWH2BS8, NSDWR3SS1, SDW2FCMW, SDW2FCMB, CDW2FCMSS, DF24P2ABB, SDF24P2AST, SDF24P2AWW, and CS14EFSBK1RCM.

Compatible Models:

- NSDWR2WH8, NSDWR2BS8, SDWH1SS9
- NSDWH2SS8, NSDWR2SS8, MDT24H2AST
- MDT24H3AST, 003719075, 003719074
- MDT24X2APR, CDW2FCMB, SDW2FCMS
- NSDWH1WH9, NSDWH2BS8, NSDWR3SS1
- SDW2FCMW, SDW2FCMB, CDW2FCMSS
- DF24P2ABB, SDF24P2AST, SDF24P2AWW
- CS14EFSBK1RCM

Installation

The installation of the dishwasher door latch switch is designed to be straightforward. Follow these steps carefully to ensure proper replacement and function.



Image: A visual guide showing the seven steps for installing the dishwasher door latch switch, with corresponding images of the switch and internal dishwasher components.

1. **Power-off:** Disconnect the power supply to the dishwasher before beginning any work. This is a critical safety step.
2. **Locate the Old Part:** Identify the position of the existing door latch switch within your dishwasher.
3. **Remove the Old Part:** Carefully detach the old switch. This may involve unscrewing fasteners or releasing electrical connectors.
4. **Install the New Part:** Position the new switch accurately, ensuring it aligns correctly with the mounting points.
5. **Connect Wiring:** Securely connect the electrical wiring to the new switch's terminals. Ensure all connections are firm.
6. **Secure the New Part:** Fasten the new switch in place using screws or other securing mechanisms as appropriate for your dishwasher model.
7. **Power-on Test:** Restore power to the dishwasher and test the door latch switch to confirm it operates normally and the door latches securely.

Operating Principle

The dishwasher door latch switch plays a vital role in the safe and efficient operation of your appliance. Its primary function is to ensure that the dishwasher door is securely closed and locked before the wash cycle can begin or continue.

When the door is properly latched, the switch signals the dishwasher's control board, allowing the cycle to proceed. This mechanism provides both a safety guarantee, preventing water leakage during operation, and a sealing function, maintaining the internal environment necessary for effective cleaning.

Maintenance

This dishwasher door latch switch is constructed from high-quality, durable materials designed for long-term reliability. The outer shell is wear-resistant and impact-resistant, ensuring integrity even after extended use. The internal mechanical components are precisely coordinated, and the spring provides appropriate elasticity for a solid, tight grip.

Due to its sealed nature and robust construction, the switch requires minimal user maintenance. Regular inspection during other dishwasher maintenance (e.g., cleaning filters) to ensure no visible damage or debris accumulation around the latch mechanism is recommended.

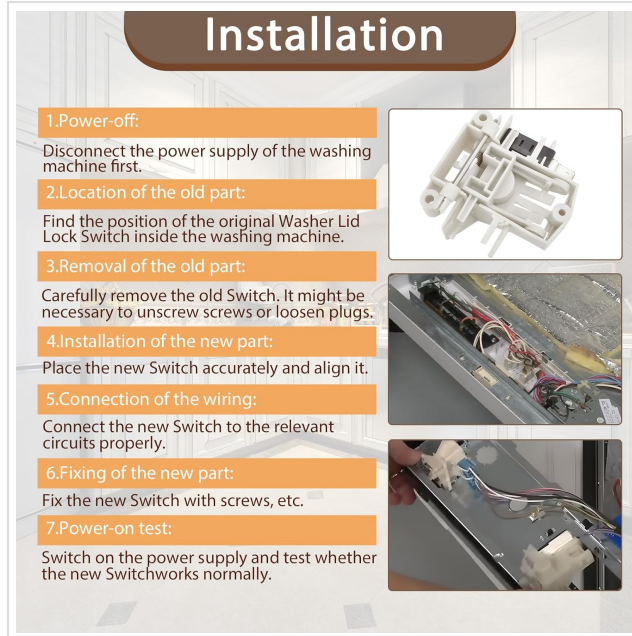


Image: A close-up view of the dishwasher door latch switch, highlighting its internal components such as the spring mechanism and electrical contacts, demonstrating its robust design.

Troubleshooting

If your dishwasher is not starting or the door is not latching properly after replacing the switch, consider the following:

- **Power Supply:** Ensure the dishwasher is receiving power and the circuit breaker has not tripped.
- **Correct Installation:** Double-check that the new switch is accurately aligned and securely fastened. Refer to the installation steps.
- **Wiring Connections:** Verify that all electrical wires are correctly and firmly connected to the switch terminals. Loose connections can prevent proper operation.
- **Door Alignment:** Inspect the dishwasher door itself to ensure it is not misaligned or obstructed, which could prevent the latch from engaging fully.
- **Other Components:** If the issue persists, the problem might lie with other dishwasher components, such as the control board or door strike.

Specifications

Attribute	Detail
Manufacturer	Jiaxuan
Part Number	XR-016

Item Weight	2.08 ounces
Product Dimensions	2.71 x 2.67 x 0.1 inches
Item Model Number	XR-016
Color	White
Included Components	17476000012184 Dishwasher Door Latch Switch
Brand	Generic

After-Sale Service and Support

We are committed to providing satisfactory after-sales service for this product. If you encounter any questions or issues regarding the dishwasher door latch switch, please do not hesitate to contact us.

Our support team aims to respond to all inquiries within 24 hours to assist in resolving any problems you may experience.