

Kinglucky A8

Kinglucky Jewelry-Inspired Clip-On Earbuds with Bow Earrings Instruction Manual

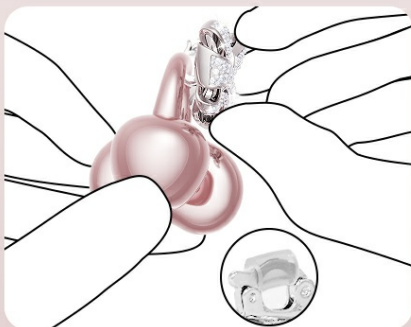
Model: A8

INTRODUCTION

Thank you for choosing Kinglucky Jewelry-Inspired Clip-On Earbuds. These innovative open-ear headphones combine stylish design with advanced audio technology, offering comfort and clear sound for everyday use. This manual provides detailed instructions to help you get the most out of your new earbuds.

WHAT'S IN THE BOX

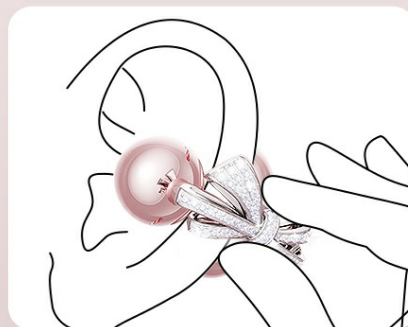
How to Wear Your Charm.



Step 1: Gently open the ear cuff.
Keep the silicone pad — it helps secure the charm.



Step 2: Clip it onto the earphone stem.



Step 3: Place the set over your ear—you're good to glow.

Image: Contents of the Kinglucky Earbuds box, including the earbuds, crystal bow ear clips, charging case, and USB-C charging cable.

- Kinglucky OpenEarRing A8 Earbuds (1 pair)
- Crystal Bow Ear Clip (1 pair, detachable)
- Charging Case
- USB-C Charging Cable
- User Manual

PRODUCT OVERVIEW



Image: The Kinglucky earbuds in their charging case, highlighting their unique jewelry-inspired design.



Image: Detachable earrings feature, allowing the earbuds to be worn as accessories or plain earbuds.



Image: The ergonomic open-ear design ensures all-day comfort without pressure, ideal for small ears.

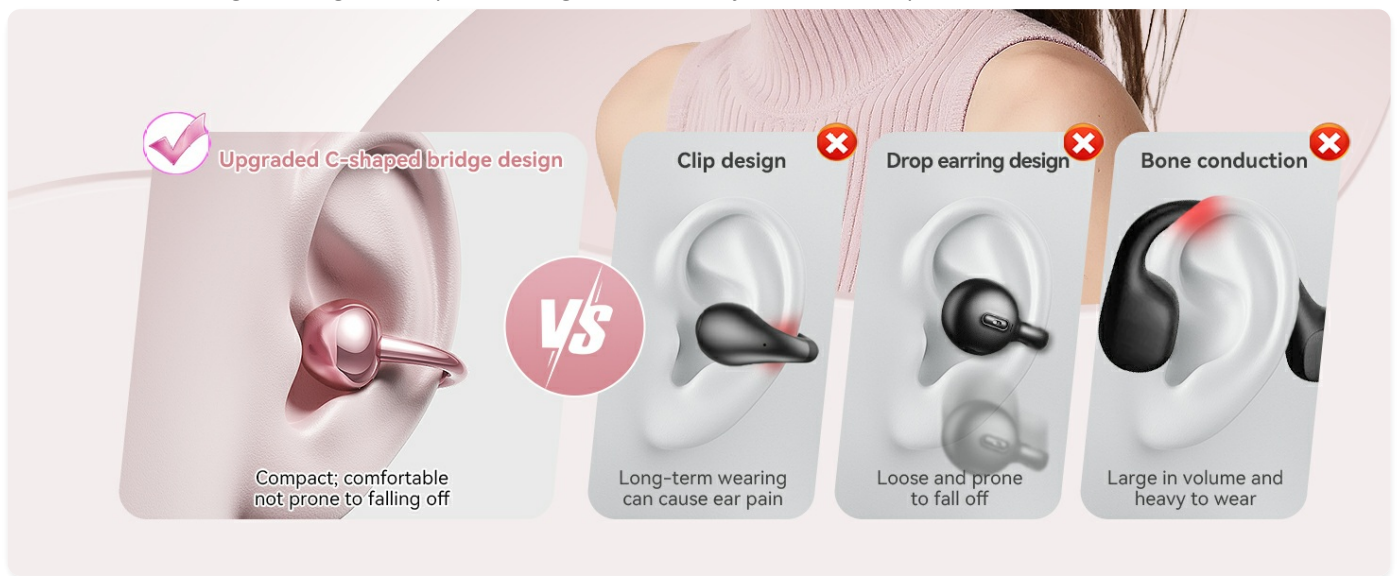


Image: Engineered for beautiful sound, with fine-tuned components for crystal-clear vocals and rich mids.

SETUP GUIDE

1. Charging the Earbuds and Case

Before first use, fully charge the earbuds and the charging case. Connect the provided USB-C cable to the charging port on the case and to a power source. The indicator light on the case will show charging status.

- **Charging Case:** Connect the USB-C cable. The LED indicator will show charging progress. A green light indicates a full charge.
- **Earbuds:** Place the earbuds into the charging case. They will automatically begin charging. Ensure the case has sufficient power.

2. Bluetooth Pairing

The Kinglucky earbuds utilize Bluetooth 5.4 for fast and stable connections.

1. Open the charging case. The earbuds will automatically enter pairing mode.
2. On your device (smartphone, tablet, etc.), go to Bluetooth settings.
3. Select "Kinglucky A8" from the list of available devices.

4. Once connected, you will hear a confirmation tone.



IP56 Water-Resistant

Built to handle rain, sweat, and nonstop days while keeping your style and comfort intact.



Image: The earbuds support multipoint pairing, allowing seamless connection to two devices simultaneously.

3. Wearing Your Earbuds

The unique clip-on design ensures a secure and comfortable fit.

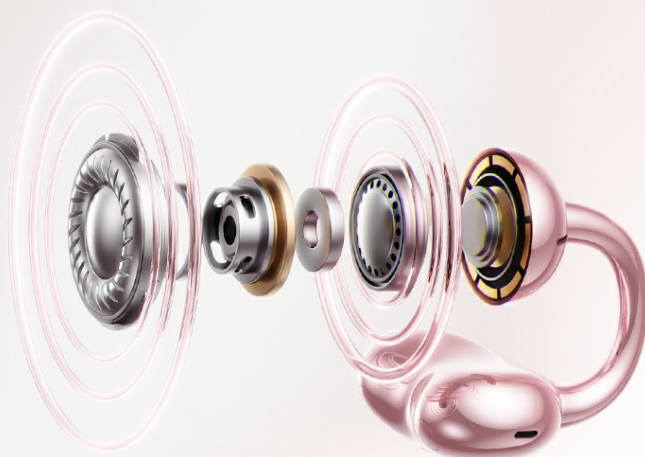
Image: Step-by-step guide on how to properly wear the earbuds, including attaching the crystal bow charm.

1. **Attach Charm (Optional):** Gently open the ear clip charm and clip it onto the earbud stem. Ensure the silicone pad is kept for secure attachment.
2. **Position Earbud:** Place the earbud over your ear, ensuring the open-ear design sits comfortably on your earlobe.
3. **Adjust for Comfort:** Adjust the earbud until it feels secure and comfortable. The flexible C-Bridge Design adapts to your ear's shape.

OPERATING INSTRUCTIONS

Touch Controls

The Kinglucky earbuds feature intuitive touch controls on the surface of each earbud.



Surprisingly Powerful Sound

Dual drivers deliver rich, detailed audio with clear vocals, layered mids and smooth, non-fatiguing bass.

Image: Visual guide to the smart touch controls for music and calls.

Action	Function
Single Tap	Volume Up / Down (Music), Answer Call (Call)
Double Tap	Play / Pause (Music)
Press and Hold (2s)	Reject Call (Call)

Sound Quality and Performance

- **Clear & Balanced Sound:** Tuned for optimal listening, providing clean vocals and soft depth without overwhelming your ears.
- **AI-Powered Call Clarity:** Equipped with 2 beamforming microphones and advanced noise-cancelling technology for crisp conversations.
- **Long Playtime:** Enjoy up to 50 hours of playtime with the charging case, ensuring your music and calls last all day.

MAINTENANCE AND CARE

To ensure the longevity and optimal performance of your Kinglucky earbuds, follow these care guidelines:

- **Cleaning:** Use a soft, dry cloth to clean the earbuds and charging case. Avoid using abrasive materials or harsh chemicals.
- **Water Resistance:** The earbuds are IP56-rated, meaning they are resistant to sweat and light rain. Do not submerge them in water or expose them to heavy rain. Dry them thoroughly if they get wet.
- **Storage:** When not in use, store the earbuds in their charging case to protect them and keep them charged.
- **Temperature:** Avoid exposing the earbuds to extreme temperatures (hot or cold) or high humidity.

All-Day Battery Life

Up to 50 hours of playtime, with fast charging to keep your playlists going



Image: The earbuds are built with IP56 water resistance for daily use and workouts.

TROUBLESHOOTING

If you encounter any issues with your Kinglucky earbuds, try the following solutions:

- **Earbuds not pairing:**
 - Ensure both earbuds are in the charging case and fully charged.

- Turn off Bluetooth on your device, then turn it back on.
- Forget "Kinglucky A8" in your device's Bluetooth settings and try pairing again.

• **No sound from one earbud:**

- Place both earbuds back in the charging case, close the lid, wait a few seconds, then open it again.
- Ensure both earbuds are charged.

• **Charging issues:**

- Check if the USB-C cable is securely connected to both the case and the power source.
- Try a different USB-C cable or power adapter.
- Ensure the charging contacts on the earbuds and in the case are clean and free of debris.

• **Poor sound quality:**

- Ensure the earbuds are properly seated in your ears.
- Clean any debris from the earbud speakers.
- Move closer to your connected device to avoid interference.

If the issue persists, please contact Kinglucky customer support for further assistance.

SPECIFICATIONS

Feature	Detail
Brand	Kinglucky
Model Name	i121
Item Model Number	A8
Connectivity Technology	Wireless (Bluetooth 5.4)
Ear Placement	Open Ear
Form Factor	True Wireless
Noise Control	None
Impedance	32 Ohm
Material	Plastic
Item Weight	3.52 ounces (0.1 Kilograms)
Color	Pink
Manufacturer	Kinglucky
Included Components	User Manual

WARRANTY AND SUPPORT

Kinglucky products are designed for durability and performance. For information regarding product warranty, please refer to the documentation included with your purchase or visit the official Kinglucky website.

Optional protection plans are available for extended coverage:

- 2-Year Protection Plan
- 3-Year Protection Plan
- Complete Protect (monthly plan)

For technical support, troubleshooting assistance, or any product-related inquiries, please contact Kinglucky customer service through their official channels.