

[Manuals.plus](#) /

› [LUXOAK](#) /

› LUXOAK Murphy Bed with Charging Station Instruction Manual

## LUXOAK BPB008

# LUXOAK Murphy Bed with Charging Station Instruction Manual

Model: BPB008

## PRODUCT OVERVIEW

---

The LUXOAK Murphy Bed with Charging Station is a versatile 2-in-1 furniture piece designed to optimize space in homes, offices, guest rooms, or lofts. It functions as a stylish cabinet when folded, and easily transforms into a comfortable queen-sized bed when needed. This unit includes a built-in charging station for convenience and a large storage drawer for bedding and other items.



Figure 1: The LUXOAK Murphy Bed in its fully extended bed configuration, showcasing the integrated charging station and the large storage drawer.

## SAFETY INFORMATION

**Important:** Always follow the assembly instructions carefully to prevent instability or collapse. Use caution around sharp edges and when moving the heavy bed frame. Do not attempt to assemble or move the bed frame alone.

## FEATURES

- **2-in-1 Design:** Seamlessly transforms from a compact cabinet to a queen-sized bed, ideal for maximizing space.
- **Built-in Charging Station:** Equipped with 2 standard AC outlets, 1 USB port, and 1 Type-C port for convenient device charging.
- **Ample Storage:** Features a large capacity storage drawer and cabinet space, perfect for storing bedding, clothes, or other items. The drawer includes smooth metal slides for easy access.

- **Durable Construction:** Made from MDF board with a wood finish, designed for stability and longevity.

# Built-in Charging Station



**125V/12A**  
[2 AC Outlets]



**5V/2A**  
[1 USB + 1 Type-c]



**6.56-Foot**  
[Power Cord]

Figure 2: Detail of the integrated charging station, providing convenient power access for electronic devices.

# Multifunctional & Ample Storage Space

Cabinet Storage  
Foldable Mattress Can Be Placed



Figure 3: The large storage drawer, designed to hold bedding and other essentials, shown with items inside.

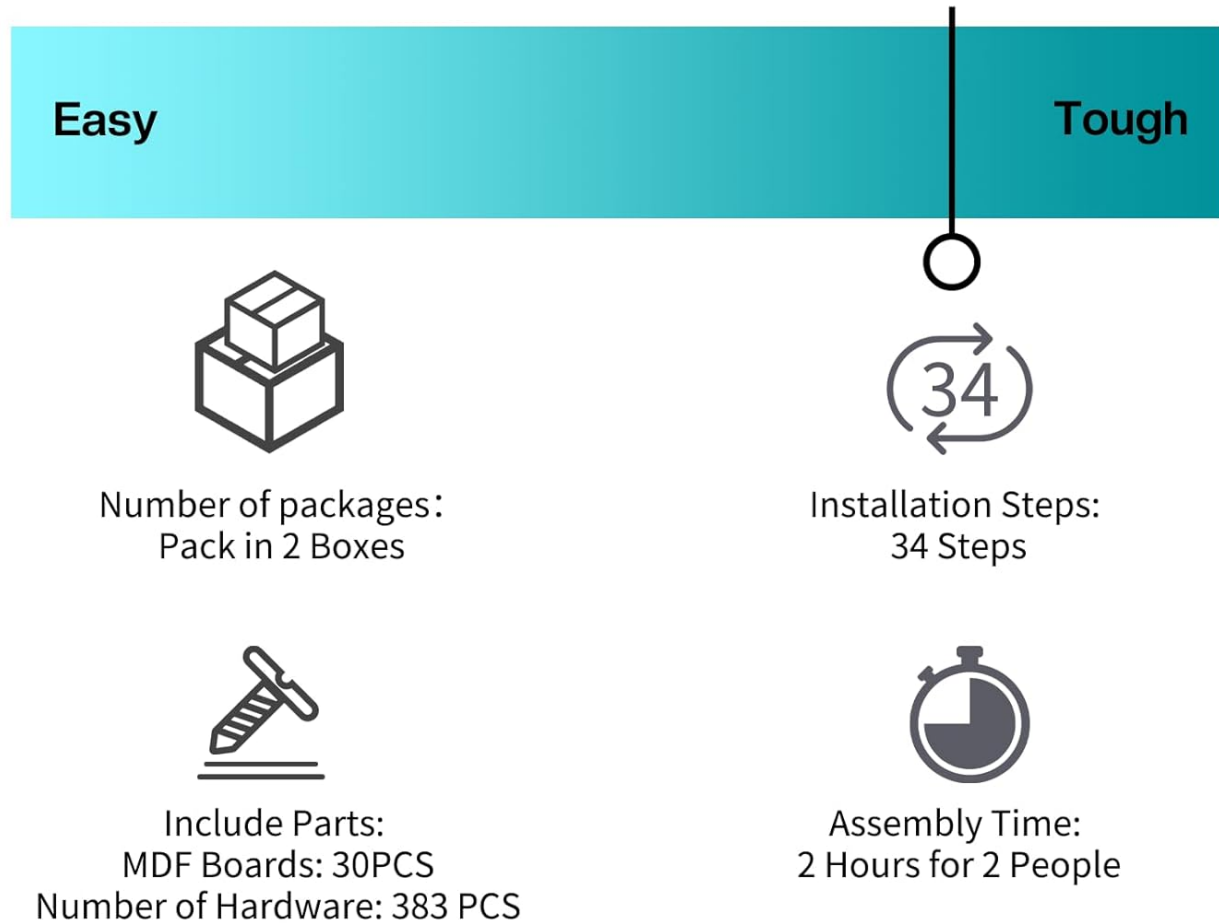
## SETUP AND ASSEMBLY

Assembly of the LUXOAK Murphy Bed requires two adults and typically takes 2-3 hours. All necessary hardware and instructions are included. Please ensure assembly is performed on a flat surface to prevent misalignment of parts, especially the rail tracks for the drawers.

- **Number of Packages:** 2 boxes
- **Number of Parts:** 30 MDF Boards, 383 PCS Hardware
- **Installation Steps:** 34 steps
- **Recommended Assembly Time:** 2-3 hours for 2 people

# Installation Level

Professional Assembly & Installation Required



## When installing the slide rail

1. Follow the instructions to separate the TWO sections into TWO parts
2. Pay attention to the direction of the rail holes
3. Make sure to install on a flat surface

Figure 4: Overview of the assembly process, indicating the number of packages, parts, steps, and estimated assembly time.

**Important Assembly Note:** When installing the slide rails, follow the instructions to separate the two sections into two parts. Pay close attention to the direction of the rail holes and ensure installation is on a flat surface.

## OPERATING INSTRUCTIONS

The Murphy Bed is designed for easy conversion between cabinet and bed configurations. Follow these steps:

### 1. To Convert from Cabinet to Bed:

- Pull out the large bottom drawer completely. This drawer forms the base of the bed.
- Locate the release buttons on the sides of the cabinet (near the top panel). Press these buttons to unlock the top panel.
- Carefully lower the top panel forward. This panel will unfold to reveal the bed frame.
- Unfold your trifold mattress (not included) and place it onto the extended bed frame.

### 2. To Convert from Bed to Cabinet:

- Remove the mattress from the bed frame and fold it for storage (if applicable).
- Lift the bed frame panel back into its upright cabinet position. Ensure it locks securely into place.
- Push the large bottom drawer back into the cabinet until it is fully closed.

## 2 Use Ways of Cabinet Bed

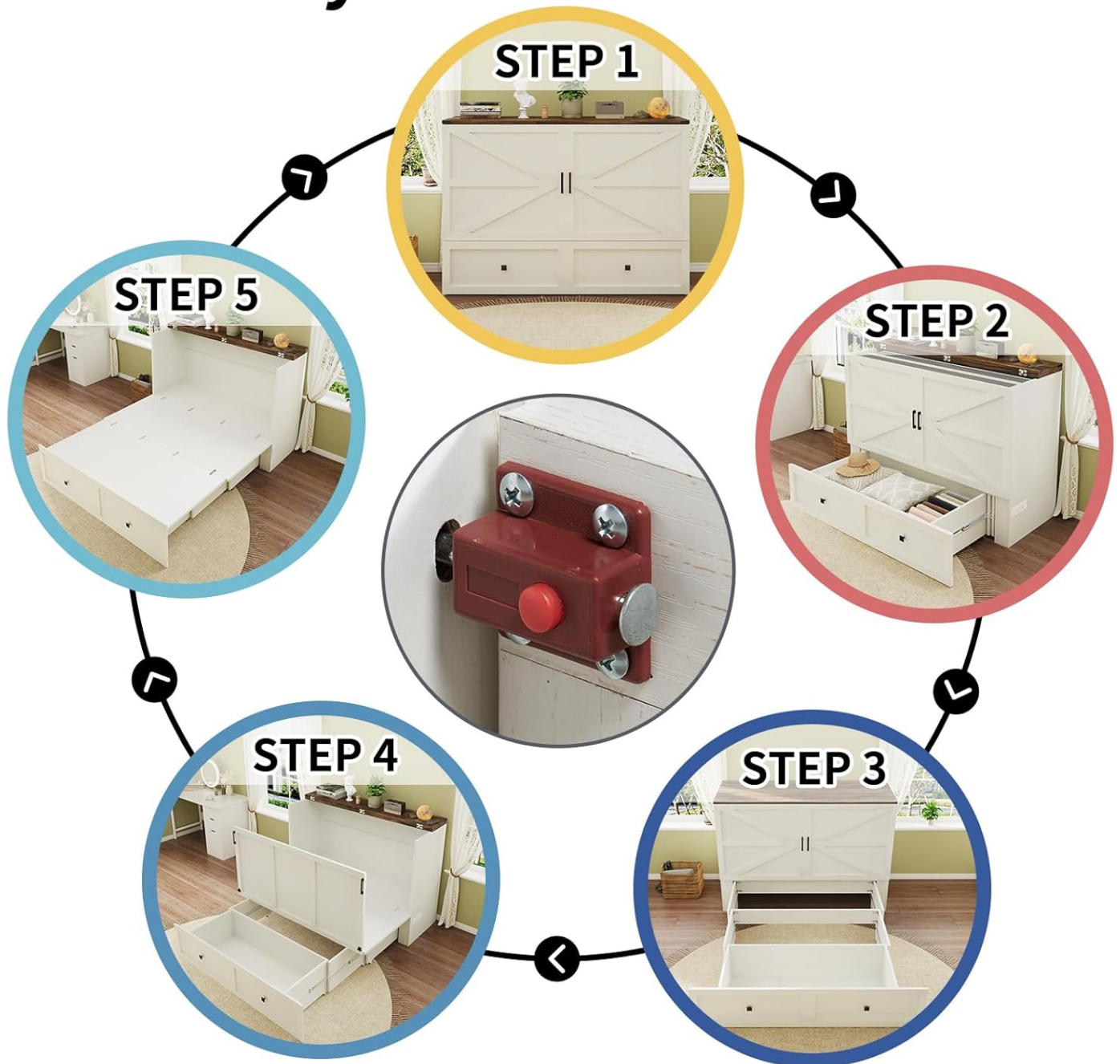


Figure 5: Visual guide illustrating the five key steps for transforming the Murphy Bed from cabinet to bed and vice versa.

### MAINTENANCE

To ensure the longevity and optimal performance of your LUXOAK Murphy Bed, follow these maintenance guidelines:

- **Cleaning:** Wipe surfaces with a soft, damp cloth. Avoid harsh chemicals or abrasive cleaners that may damage the finish.
- **Hardware:** Periodically check all screws and fasteners to ensure they are tight. Tighten if necessary to maintain stability.
- **Drawer Slides:** Keep the metal drawer slides clean and free of debris. If the drawers become stiff, a small amount

of silicone lubricant can be applied to the slides.

- **Movement:** When moving the entire unit, ensure it is lifted, not dragged, to prevent damage to the base or flooring.

## TROUBLESHOOTING

---

If you encounter any issues with your Murphy Bed, please refer to the following common troubleshooting tips:

- **Bed Does Not Fold/Unfold Smoothly:**

- Ensure the release buttons are fully depressed when converting the bed.
- Check for any obstructions (e.g., bedding, items in the storage drawer) that might be preventing smooth operation.
- Verify that all assembly hardware is securely tightened and that the bed frame components are correctly aligned.

- **Drawer Does Not Close/Open Properly:**

- Inspect the drawer slides for any debris or damage. Clean or clear as needed.
- Ensure the drawer is properly seated on its tracks.
- Confirm that the unit is on a flat, level surface. Uneven flooring can affect drawer operation.

- **Charging Station Not Working:**

- Verify that the power cord from the charging station is securely plugged into a functional wall outlet.
- Check the connection of the charging station's internal wiring, ensuring it is firmly connected within the unit.

For issues not covered here, please contact LUXOAK customer support.

## SPECIFICATIONS

---

Feature	Detail
Size	Queen
Product Dimensions	81"L x 61.5"W x 45"H
Special Features	Cabinet Bed, Storage Drawer, Wheeled
Color	White+barnwood
Finish Type	Wood
Included Components	Bed Frame, Hardware, Instructions
Compatible Mattress Size	Queen (Note: Mattress not included)
Brand	LUXOAK
Assembly Required	Yes
Manufacturer	boliyang
Form Factor	Murphy Bed

Target Audience	Adults with small spaces or multifunctional rooms, preferring rustic or farmhouse style and valuing convenience
Item Weight	217 pounds
Date First Available	November 15, 2024

# Product Dimensions

Queen Size

Weight Capacity: 600 lbs

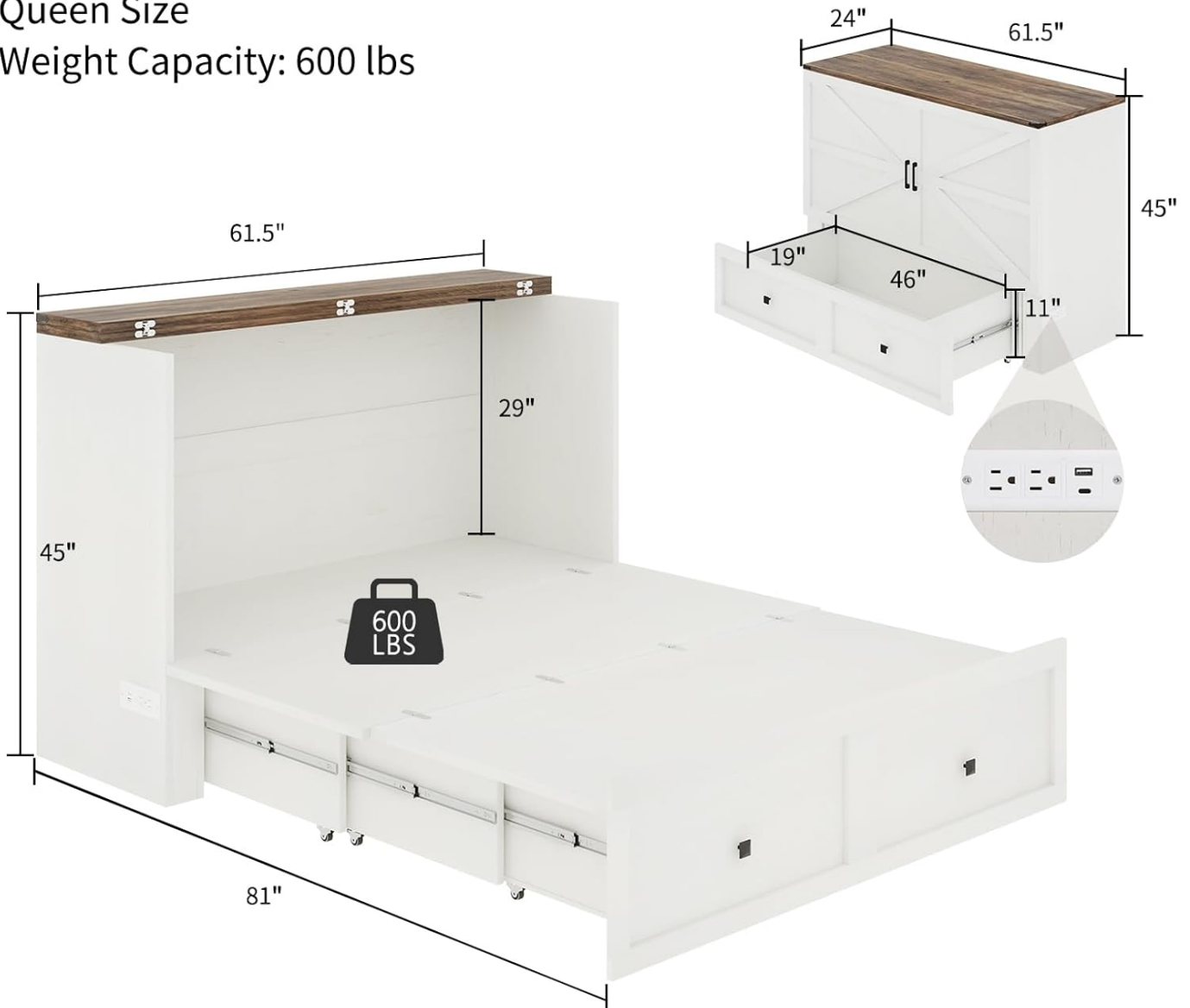


Figure 6: Detailed product dimensions for both bed and cabinet configurations.

## WARRANTY AND SUPPORT

LUXOAK is committed to providing high-quality products. While specific warranty details are not provided in this manual, general customer support is available for any inquiries or assistance needed with your Murphy Bed.

For support, please refer to the contact information provided at the point of purchase or visit the official LUXOAK store online. You may also find helpful information and FAQs on the product's listing page.

This product is eligible for 100-day easy returns as per the seller's policy.

