

CP PLUS CP-F83B

CP PLUS CP-F83B True 4K UHD Dual Channel Dash Cam User Manual

1. INTRODUCTION

This manual provides detailed instructions for the installation, operation, and maintenance of your CP PLUS CP-F83B True 4K UHD Dual Channel Dash Cam. Please read this manual thoroughly before using the device to ensure proper functionality and safety. Retain this manual for future reference.

2. PRODUCT OVERVIEW

2.1 Package Contents

Verify that all items are present in the package:

- CP PLUS CP-F83B Dash Cam Unit (Front Camera)
- Rear Camera
- Car Charger
- Car Mount
- Charging Cable
- Crowbar (for cable routing)
- Quick Guide

2.2 Key Features

- **True 4K UHD Resolution:** Captures video at 2160P (8MP) for clear and detailed footage.
- **Dual Channel Recording:** Simultaneously records from both front and rear cameras.
- **Wide Angle View:** 130° field of view for comprehensive road coverage.
- **4-inch Touch Screen Display:** Intuitive interface for easy navigation and playback.
- **Built-in GPS:** Records vehicle location and speed data.
- **G-Sensor:** Automatically detects impacts and locks emergency footage.
- **Advanced Driver Assistance System (ADAS):** Includes features like Lane Departure Warning and Forward Collision Warning.

- **Night Vision:** Enhanced low-light recording capabilities.
- **Time-Lapse Recording:** Condenses long periods of recording into shorter videos.
- **Parking Mode:** Provides surveillance when the vehicle is parked.
- **Dual-band Wi-Fi (2.4G/5G):** For wireless connection to a smartphone app.
- **Storage Support:** Supports Micro SD cards up to 1TB.



Image: The CP PLUS CP-F83B dash cam, showing both the main front camera unit and the smaller rear camera unit.

More than just a security shield, CarKam is your trusted travel companion.



Image: Visual representation of key features including 4K UHD Resolution, Built-in Touch Display, Time Lapse Recording, Super Capacitor, ADAS, Speed Alert, G-Sensor Based Emergency Recording, GPS Enabled, Dual Wi-Fi Band Support, and 1TB SD Card Support.

3. SETUP

3.1 Inserting the Micro SD Card

1. Ensure the dash cam is powered off.
2. Locate the Micro SD card slot on the side of the main dash cam unit.
3. Insert a compatible Micro SD card (Class 10 or higher, up to 1TB) into the slot until it clicks into place.
4. To remove, gently push the card in until it springs out.

Note: It is recommended to format the Micro SD card within the dash cam settings periodically to ensure optimal performance and prevent data corruption.

3.2 Mounting the Dash Cam

1. Clean the windshield area where the dash cam will be mounted. Ensure it is free from dust and grease.
2. Attach the car mount to the main dash cam unit.
3. Peel off the protective film from the adhesive pad on the mount.
4. Firmly press the mount onto the windshield, ideally behind the rearview mirror, ensuring it does not obstruct your view. Hold for 30 seconds.
5. Mount the rear camera on the rear windshield, ensuring a clear view.

Dual Channel Recording



Front Camera



Rear Camera

Image: Illustration of a dual-channel dash cam mounted in a vehicle, showing the front camera's view through the windshield and the rear camera's view through the rear window.

3.3 Power Connection

1. Connect the provided charging cable to the dash cam's power input port.
2. Plug the car charger into your vehicle's 12V power outlet (cigarette lighter socket).
3. Use the crowbar to neatly tuck the power cable along the windshield trim and dashboard to avoid obstruction and ensure a clean installation.
4. Connect the rear camera cable to the main dash cam unit and route it discreetly to the rear of the vehicle.

3.4 Initial Power On and Settings

1. Once powered, the dash cam will automatically turn on and begin recording.
2. On the touch screen, navigate to the settings menu.
3. Set the correct date and time.
4. Select your preferred language.
5. Adjust video resolution, loop recording duration, and G-Sensor sensitivity as desired.

4. OPERATING INSTRUCTIONS

4.1 Automatic Recording

The dash cam automatically starts recording when the vehicle's ignition is turned on and stops when the ignition is turned off. Footage is saved in segments (loop recording) to the Micro SD card.

4.2 Manual Emergency Recording

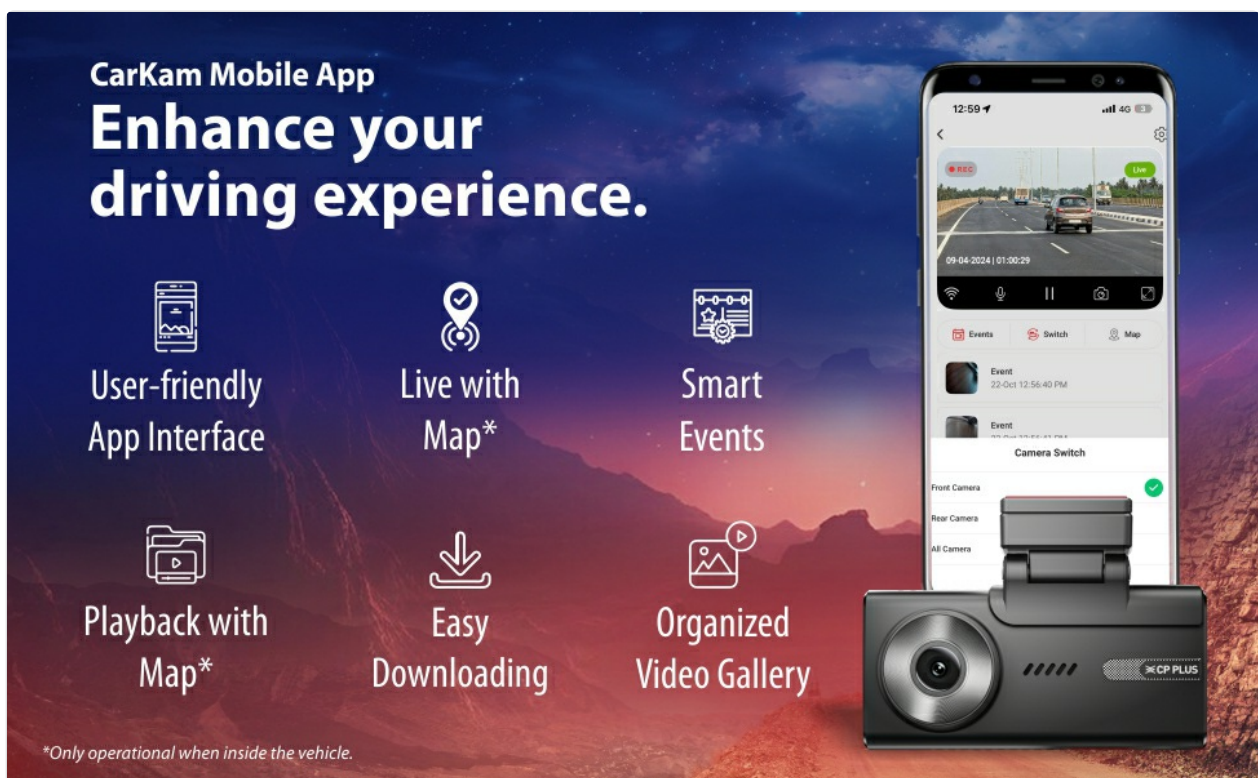
During recording, press the designated emergency record button (or tap the icon on the touch screen) to manually lock the current video segment, preventing it from being overwritten by loop recording.

4.3 Playback on Device

1. Stop recording by tapping the record icon on the touch screen.
2. Navigate to the playback menu.
3. Browse through recorded videos (normal, emergency, parking, time-lapse).
4. Tap a video to play it on the 4-inch touch screen.

4.4 Wi-Fi Connectivity and Mobile App

1. Download the official CP PLUS CarKam mobile application from your smartphone's app store.
2. Enable Wi-Fi on the dash cam via the settings menu.
3. On your smartphone, connect to the dash cam's Wi-Fi network (SSID and password typically displayed on the dash cam screen).
4. Open the CarKam app to view live footage, access recorded videos, download files, and adjust settings remotely.



The graphic features a dark blue background with a mountain silhouette. On the right is a smartphone displaying the CarKam app interface, which includes a live video feed, a timestamp '09-04-2024 | 01:00:29', and buttons for 'Events', 'Switch', and 'Map'. Below the phone is the CP PLUS dash cam unit. On the left, six icons with text describe app features: 'User-friendly App Interface' (phone icon), 'Live with Map*' (location pin icon), 'Smart Events' (event icon), 'Playback with Map*' (folder icon), 'Easy Downloading' (download arrow icon), and 'Organized Video Gallery' (gallery icon). A small note at the bottom left states: '*Only operational when inside the vehicle.'

Image: Screenshot of the CarKam mobile application interface, showing options for live view, event management, video playback, and downloading recorded footage.

5. ADVANCED FEATURES

5.1 G-Sensor Functionality

The built-in G-Sensor detects sudden acceleration, braking, or collisions. When an event is detected, the dash cam automatically locks the current video file, saving it to a protected folder on the SD card to prevent it from being overwritten. The sensitivity of the G-Sensor can be adjusted in the settings.



Built in G-Sensor

Automatically records & saves footage on impacts.

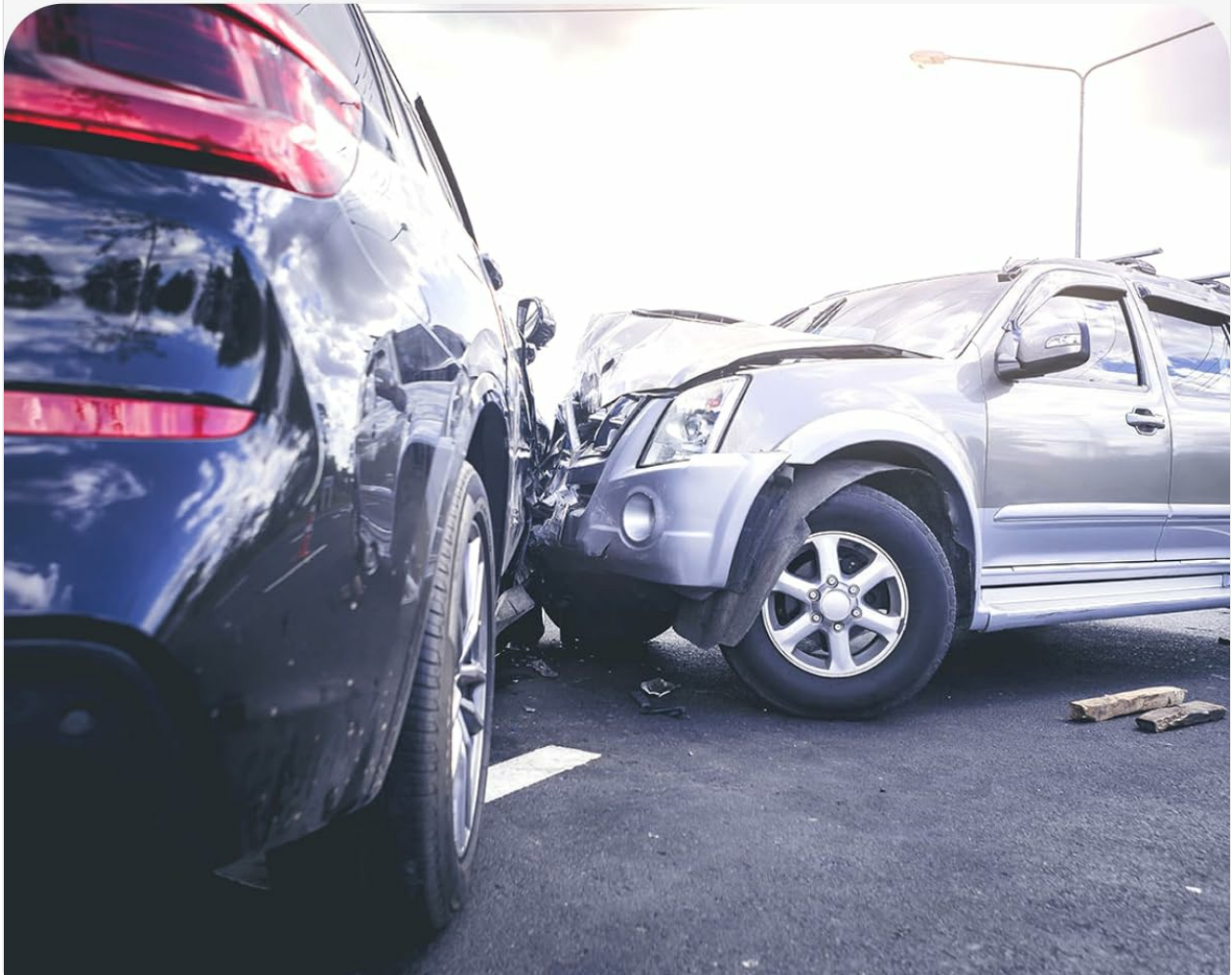


Image: A visual representation of a car collision, illustrating how the built-in G-Sensor automatically records and saves footage upon impact.

5.2 Built-in GPS

The integrated GPS module records your vehicle's precise location and speed data. This information is embedded into the video files and can be viewed during playback via the mobile app or dedicated PC viewer software, providing a complete record of your journey.



Built-in GPS

Live view page displays routes on map.



Image: The dash cam screen displaying a map with a route, indicating the functionality of the built-in GPS for tracking and displaying routes.

5.3 Time-Lapse Recording

Activate time-lapse recording in the settings to condense hours of footage into short, smooth video clips. This feature is useful for monitoring long parking periods or capturing scenic drives efficiently.



Time Lapse Recording

Condenses hours of footage into minutes.



Image: A night highway scene with car lights appearing as streaks, demonstrating the effect of time-lapse recording.

5.4 Parking Mode

When Parking Mode is enabled, the dash cam will automatically start recording if it detects motion or an impact while your vehicle is parked and the ignition is off. This provides continuous surveillance for your parked car. A hardwire kit (sold separately) may be required for continuous power in Parking Mode.

5.5 Advanced Driver Assistance System (ADAS)

The ADAS features are designed to enhance driving safety by providing alerts for potential hazards:

- **Lane Departure Warning System (LDWS):** Alerts you if your vehicle drifts out of its lane without signaling.
- **Forward Collision Warning System (FCWS):** Warns you if you are approaching a vehicle ahead too quickly.
- **Pedestrian Collision Warning:** Alerts you to pedestrians in your path.

These features can be configured or disabled in the dash cam's settings menu.

ADAS - Assists you in driving better & safer.

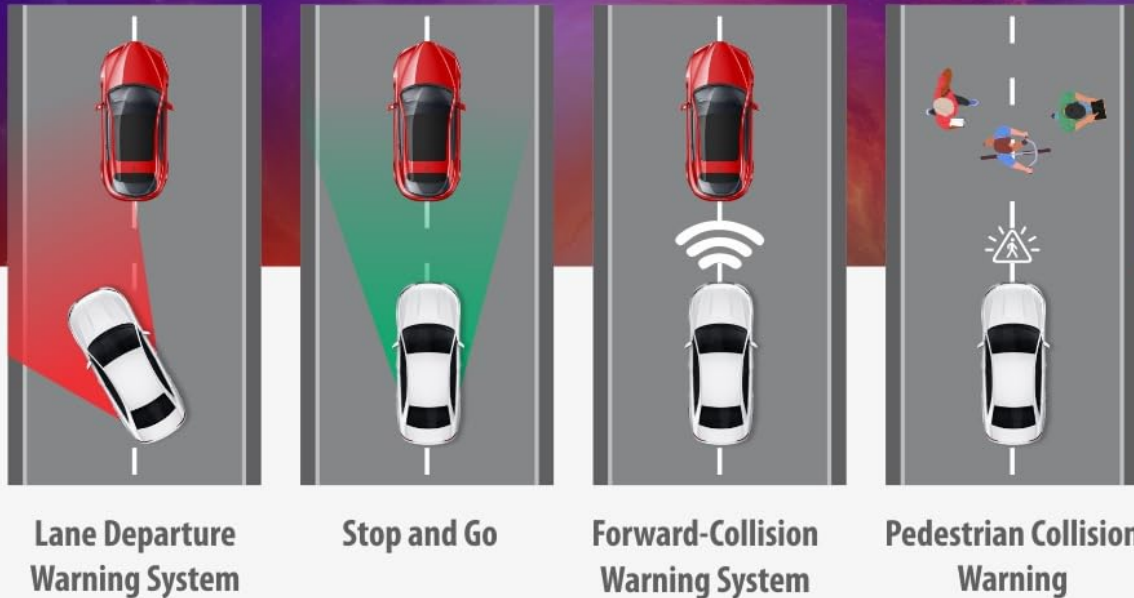


Image: Diagram illustrating various ADAS functions including Lane Departure Warning System, Stop and Go, Forward-Collision Warning System, and Pedestrian Collision Warning.

6. MAINTENANCE

6.1 Formatting the Micro SD Card

Regularly format the Micro SD card (at least once a month) through the dash cam's settings menu. This helps maintain card health and prevents recording errors. Back up any important files before formatting.

6.2 Cleaning the Device

Use a soft, dry cloth to clean the dash cam's lens and screen. For stubborn smudges, a slightly damp cloth can be used, followed by a dry one. Avoid using harsh chemicals or abrasive materials.

6.3 Firmware Updates

Periodically check the CP PLUS official website or the CarKam app for available firmware updates. Firmware updates can improve performance, add new features, or fix bugs. Follow the instructions provided with the update carefully.

7. TROUBLESHOOTING

If you encounter issues with your CP PLUS CP-F83B Dash Cam, refer to the following common problems and solutions:

Problem	Possible Cause	Solution
Dash cam does not power on.	No power supply; faulty cable/charger; loose connection.	Check car charger connection; ensure vehicle's 12V outlet is functional; try a different charging cable/charger.

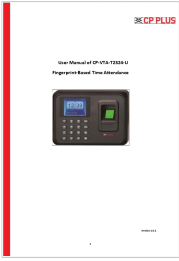



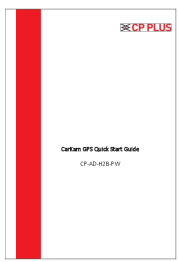

Problem	Possible Cause	Solution
Recording stops unexpectedly.	SD card full or corrupted; incompatible SD card; power interruption.	Format the SD card; use a Class 10 or higher SD card; ensure stable power connection.
Poor video quality.	Dirty lens; protective film still on lens; incorrect resolution setting.	Clean the lens; remove any protective film; check video resolution settings.
GPS not tracking location/speed.	Poor GPS signal; GPS module malfunction.	Ensure dash cam has a clear view of the sky; move vehicle to an open area; check for firmware updates.
Wi-Fi connection issues.	Incorrect Wi-Fi password; app issues; interference.	Verify Wi-Fi password; restart dash cam and smartphone; reinstall the CarKam app.

8. SPECIFICATIONS

Feature	Detail
Model Number	CP-F83B
Video Capture Resolution	2160p (4K UHD)
Field Of View	132 Degrees
Display	4-inch Touch Screen
Connectivity Technology	Wi-Fi (2.4G/5G)
Special Features	App Control, Automatic Incident Detection, Built-In Display, Built-In GPS, G-Sensor, ADAS, Night Vision, Time-Lapse
Storage Support	Micro SD card up to 1TB
Mounting Type	Windshield Mount
Product Dimensions	11 x 5 x 2 cm
Item Weight	179 g
Manufacturer	Aditya Infotech Ltd.

9. WARRANTY AND SUPPORT

For warranty information and customer support, please refer to the warranty card included with your product or visit the official CP PLUS website. You can also find support resources on the [CP PLUS Store on Amazon](#).

	<p>CP PLUS CP-VTA-T2324-U Fingerprint Time Attendance User Manual</p> <p>Comprehensive user manual for the CP PLUS CP-VTA-T2324-U fingerprint-based time attendance device. Covers setup, configuration, employee management, system information, data download/upload, and troubleshooting.</p>
	<p>CP-VTA-F1043 Fingerprint-Based Time Attendance User Manual</p> <p>This user manual provides detailed instructions for the CP-VTA-F1043 Fingerprint-Based Time Attendance device. It covers setup, user registration, communication settings, time configuration, advanced features, log management, and product information to ensure proper usage and understanding of its functionality.</p>
	<p>CP-VTA-M1143 Facial & Fingerprint-Based Time Attendance User Manual</p> <p>Comprehensive user manual for the CP-VTA-M1143 Facial & Fingerprint-Based Time Attendance device. Learn how to enroll users, manage data, configure network settings, and utilize system features for efficient time tracking.</p>
	<p>CP-EBC-1073-K Body Worn Camera User Manual</p> <p>Comprehensive user manual for the CP-EBC-1073-K body worn camera, detailing its features, structure, basic operations, device usage, and setup configurations for law enforcement and security professionals.</p>
	<p>CP PLUS CarKam GPS CP-AD-H2B-PW Quick Start Guide</p> <p>A comprehensive quick start guide for the CP PLUS CarKam GPS device, model CP-AD-H2B-PW, covering product appearance, installation, power management, app usage, video storage, recording modes, and warranty information.</p>
	<p>CP PLUS ezykam+ Wi-Fi Camera Quick Operation Guide</p> <p>A comprehensive guide to setting up and using your CP PLUS ezykam+ Wi-Fi camera, including installation, app usage, troubleshooting, and technical specifications.</p>