

[Manuals.plus](#) /

> [VTRIN](#) /

> VTRIN Portable Wardrobe Closet Instruction Manual (Model: Portable Closet-11-1)

VTRIN Portable Closet-11-1

VTRIN Portable Wardrobe Closet Instruction Manual

Model: Portable Closet-11-1

INTRODUCTION

This manual provides detailed instructions for the assembly, operation, and maintenance of your VTRIN Portable Wardrobe Closet. Please read these instructions carefully before assembly and use to ensure proper function and longevity of the product.

The VTRIN Portable Wardrobe Closet offers a practical storage solution with a hanging rod, multiple shelves, and side pockets, designed for bedrooms, dorms, and other living spaces.

SAFETY INFORMATION

- Ensure all rods are fully inserted into connector holes during assembly. Incomplete insertion can compromise stability.
- Do not overload shelves or the hanging rod beyond their stated capacities. Overloading may lead to structural failure.
- Keep the wardrobe away from direct heat sources and excessive moisture to prevent material degradation.
- Keep small parts, such as connectors, out of reach of children during assembly and use.

SETUP AND ASSEMBLY

The VTRIN Portable Wardrobe Closet is designed for straightforward assembly. All pipes and connectors are labeled for easy identification. Follow the steps below and refer to the assembly diagram.

1. **Unpack Components:** Carefully remove all parts from the packaging. Verify that all components listed in the parts list are present.
2. **Identify Parts:** Match each pipe and connector to its corresponding label as shown in the assembly diagram.

3. **Assemble Frame:** Begin by connecting the pipes using the plastic connectors. Ensure that all rods reach the bottom of the plastic connector holes for maximum stability. A rubber mallet (often included) can assist in securing connections.
4. **Install Shelves:** Place the non-woven fabric shelves onto the designated frame sections.
5. **Attach Hanging Rod:** Secure the hanging rod into its designated position within the frame.
6. **Apply Cover:** Once the frame is complete, drape the non-woven fabric cover over the structure. Ensure the cover fits snugly and the side pockets are correctly positioned.

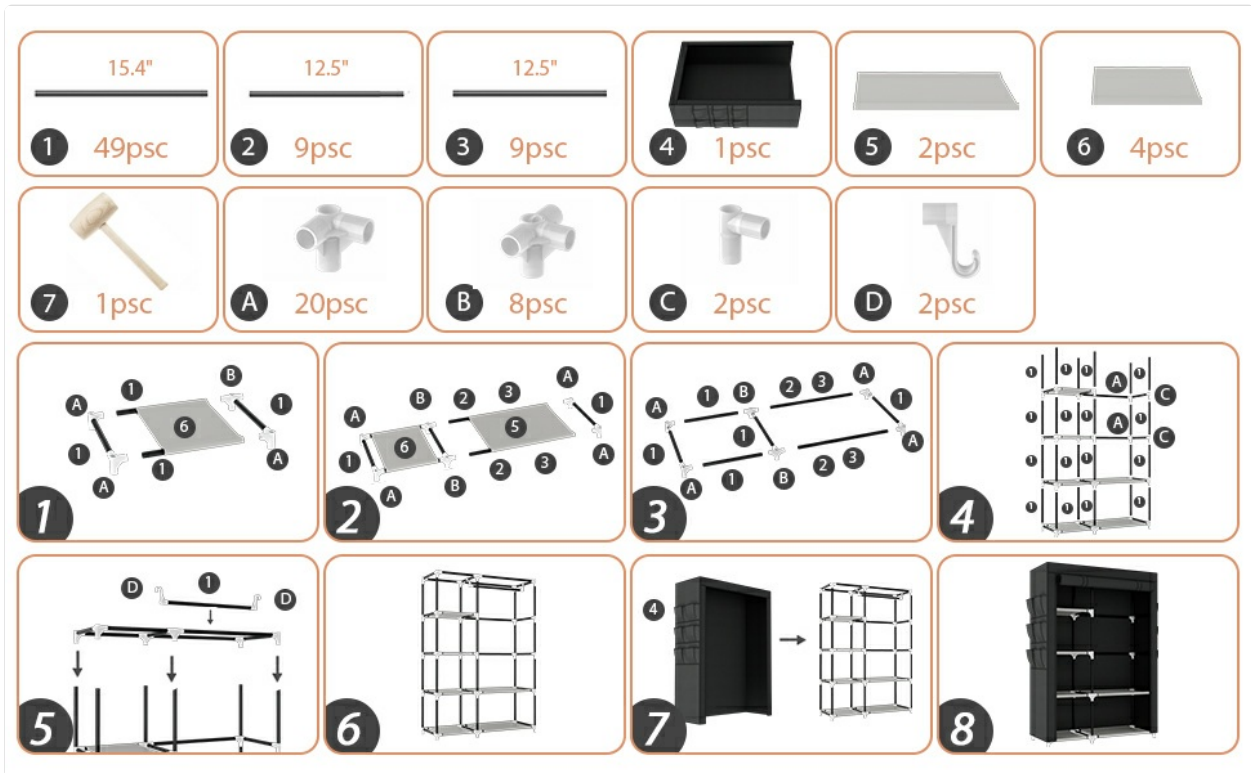


Figure 1: Step-by-step assembly diagram for the VTRIN Portable Wardrobe Closet.



Figure 2: Installation of the fabric cover onto the wardrobe frame.

OPERATION AND STORAGE

The VTRIN Portable Wardrobe Closet is designed to provide versatile storage for various items.

- **Hanging Clothes:** Utilize the 24.4-inch wide hanging rod for shirts, dresses, jackets, and other garments.
- **Shelf Storage:** The 6 shelves are suitable for folded clothes, blankets, pillows, boxes, and other accessories.
- **Side Pockets:** The 6 side pockets offer convenient storage for smaller items such as scarves, shoes, hats, or stuffed animals.
- **Dust Protection:** The durable non-woven fabric cover protects your clothes from dust. Use the zipper closure to easily open and close the wardrobe.



Figure 3: Fully assembled wardrobe showcasing internal storage capacity.



Figure 4: Wardrobe with the protective cover closed.



Figure 5: Detailed view of key features including cover, pockets, and fasteners.

CARE AND MAINTENANCE

To maintain the appearance and functionality of your VTRIN Portable Wardrobe Closet, follow these care instructions:

- **Cleaning:** Wipe the metal frame and non-woven fabric cover with a dry cloth. Avoid using harsh chemicals or abrasive cleaners, which can damage the materials.
- **Dusting:** Regularly dust the exterior and interior surfaces to prevent buildup.
- **Inspection:** Periodically check all connections to ensure they remain secure. Re-insert any loose rods fully into their connectors.
- **Avoid Overloading:** Adhere to the recommended load capacities for the hanging rod and shelves to prevent stress on the frame and fabric.

TROUBLESHOOTING

If you encounter issues with your VTRIN Portable Wardrobe Closet, consider the following solutions:

- **Wardrobe Leans or is Unstable:**

- Ensure all metal tubes are fully inserted into the plastic connectors. Apply firm pressure or use a rubber mallet to secure connections.
- Verify that the wardrobe is placed on a flat, level surface.
- Check if the weight distribution of items inside the wardrobe is balanced. Uneven loading can cause leaning.

- **Difficulty Assembling:**

- Double-check the labels on all pipes and connectors against the assembly diagram. Minor discrepancies in labeling can occur, so cross-reference with the visual guide.
- Ensure you have all the necessary parts before starting.

- **Cover Does Not Close Properly or is Loose:**

- Ensure the cover is correctly aligned with the frame.
- Check for any obstructions preventing the zipper from closing smoothly.
- The cover is designed to fit the frame dimensions; ensure the frame is assembled to the correct specifications.

- **Load-Bearing Concerns:**

- The wardrobe features thickened metal tubes and reinforced connectors for enhanced load capacity. Avoid exceeding the capacity of 15 lbs per shelf and 35 lbs for the hanging rod.

Removable covers to give you more choices



Shoes



Pants



Shirt



Jacket



Dress



Pillow



Box



Figure 6: VTRIN's enhanced durability features.

SPECIFICATIONS

Brand	VTRIN
Model Number	Portable Closet-11-1
Product Dimensions (L x W x H)	41.7 x 16.7 x 63.2 inches
Item Weight	6.7 pounds
Material	Metal, Non-Woven Fabric, Plastic
Color	Black
Hanging Rod Width	24.4 inches

Number of Shelves	6
Number of Side Pockets	6
Product Care Instructions	Wipe with Dry Cloth

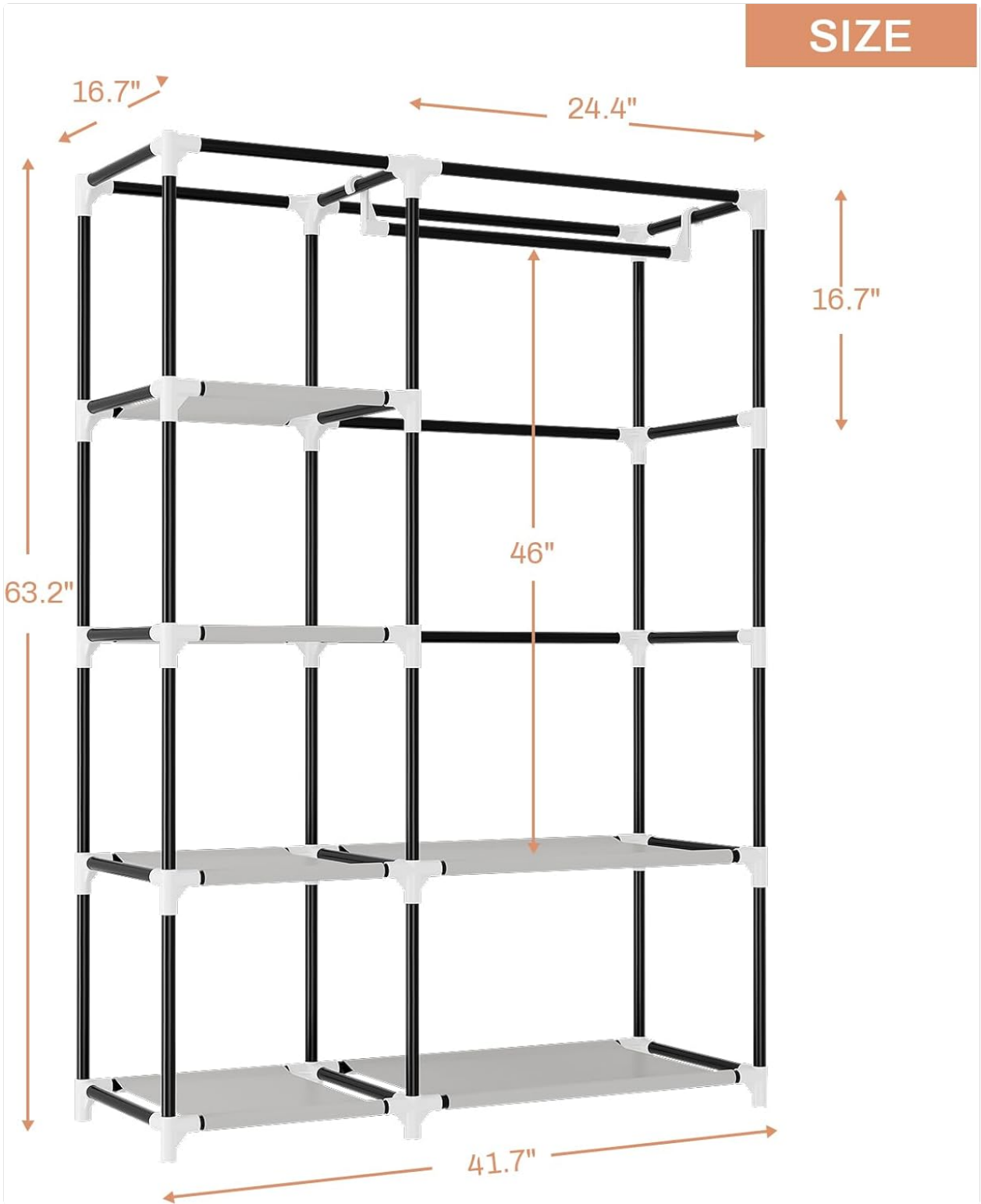


Figure 7: Product dimensions overview.

WARRANTY AND SUPPORT

VTRIN is committed to providing quality products and thoughtful after-sales service. While specific warranty

details are not provided in this manual, please retain your proof of purchase for any potential claims.
For product support, inquiries, or assistance with assembly, please refer to the contact information provided at the point of purchase or visit the official VTRIN store online: [VTRIN Store](#).