

Divoom Itour-s-Pink

Divoom iTour-S Portable Mini Wearable Bluetooth Speaker User Manual

Model: Itour-s-Pink

1. INTRODUCTION

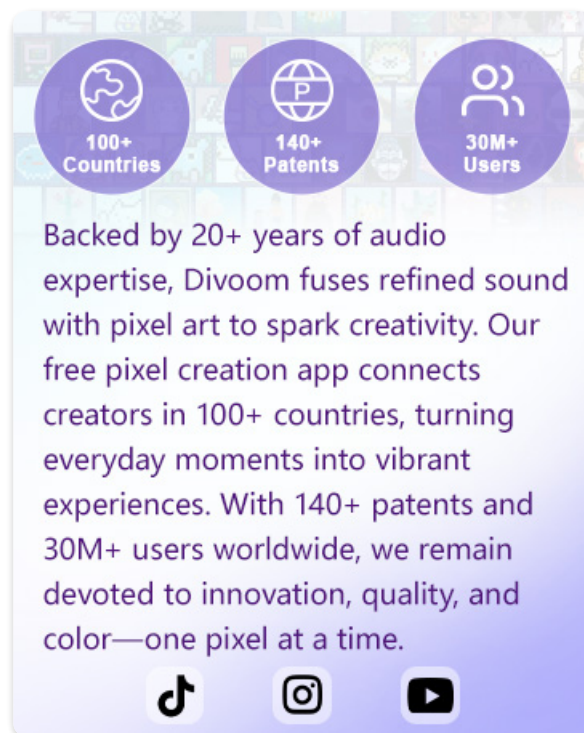
The Divoom iTour-S is a compact, portable, and wearable Bluetooth speaker designed for on-the-go audio. Featuring a robust clip-on design and IP67 waterproof and dustproof rating, it is ideal for various activities, from daily commutes to outdoor adventures. This manual provides essential information for setting up, operating, and maintaining your iTour-S speaker.



The Divoom iTour-S speaker, showcasing its compact size and user-friendly design.

2. PRODUCT FEATURES

- **Bluetooth 5.3 & TWS Pairing:** Utilizes the latest Bluetooth 5.3 technology for stable and fast connections up to 33 feet. Supports True Wireless Stereo (TWS) pairing to connect two iTour-S speakers for an enhanced stereo sound experience.
- **Clip-on Design & Hands-Free Calling:** Equipped with a durable metal clip for easy attachment to bags, belts, or clothing. Features an integrated microphone for clear, hands-free calls, perfect for active lifestyles.
- **Compact & Loud Sound:** Despite its small size, the 4.2W driver output and dual passive bass radiators deliver powerful audio with rich, deep bass.
- **IP67 Waterproof & Dustproof:** Designed to withstand water immersion up to 1 meter for 30 minutes and is fully protected against dust ingress, making it suitable for various environments.
- **Long Playtime & Fast Charging:** Offers extended playback on a single charge and recharges quickly in approximately 2.5 hours.



An internal diagram illustrating the speaker's driver and dual-side bass design for powerful audio output.

3. GETTING STARTED (SETUP)

3.1 Charging the Speaker

Before first use, fully charge your iTour-S speaker. Connect the included USB-C charging cable to the charging port on the speaker and the other end to a USB power adapter (not included) or a computer USB port. The charging indicator light will show the charging status.

3.2 Powering On/Off

- **To Power On:** Press and hold the Power button for approximately 2 seconds until you hear an audible prompt and the indicator light illuminates.
- **To Power Off:** Press and hold the Power button for approximately 2 seconds until you hear an audible prompt and the indicator light turns off.

3.3 Bluetooth Pairing

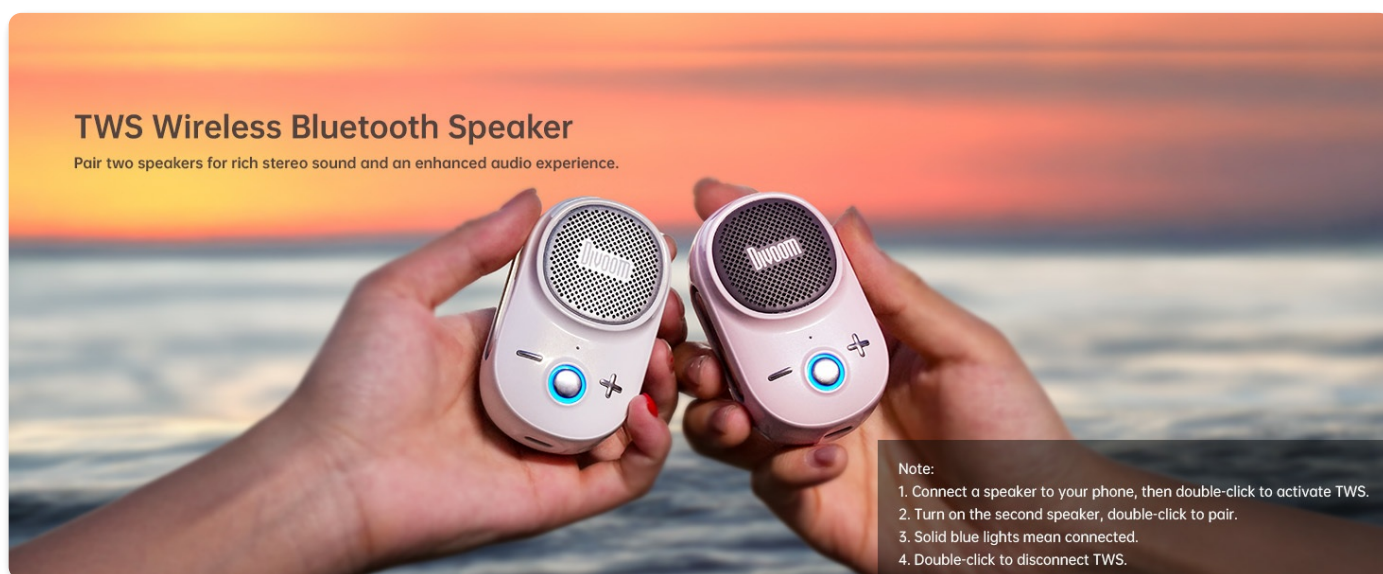
1. Ensure the speaker is powered on and in pairing mode (indicator light will be blinking).
2. On your mobile device, navigate to the Bluetooth settings.
3. Select "Divoom iTour-S" from the list of available devices.
4. Once connected, you will hear a confirmation sound, and the indicator light will turn solid blue.

Connecting the Divoom iTour-S via Bluetooth 5.3 for crystal-clear sound.

3.4 TWS (True Wireless Stereo) Pairing

To achieve a stereo sound experience, you can pair two Divoom iTour-S speakers together:

1. Ensure both iTour-S speakers are powered on and not connected to any other Bluetooth device.
2. Connect one speaker to your phone via Bluetooth as described in section 3.3. This will be your primary speaker.
3. On the primary speaker, double-click the Power button to activate TWS pairing mode.
4. The primary speaker will search for the second speaker. Once found, they will automatically pair, and you will hear a confirmation sound. The indicator lights on both speakers will turn solid blue.
5. To disconnect TWS, double-click the Power button on either speaker.



Pair two iTour-S speakers for rich stereo sound and an enhanced audio experience.

4. OPERATING INSTRUCTIONS

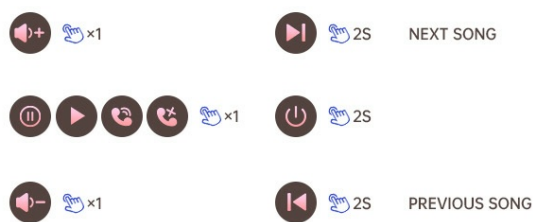
4.1 Button Functions

The Divoom iTour-S features intuitive buttons for easy control:



Raised Buttons For Easy control

The responsive touch buttons make controlling your music effortless.



Responsive touch buttons for effortless music and call control.

• Power Button (Center):

- Press and hold for 2 seconds: Power On/Off.
- Single click: Play/Pause music; Answer/End call.
- Double click: Activate/Deactivate TWS pairing.

• Volume Up (+) Button:

- Single click: Increase volume.
- Press and hold for 2 seconds: Next song.

• Volume Down (-) Button:

- Single click: Decrease volume.
- Press and hold for 2 seconds: Previous song.

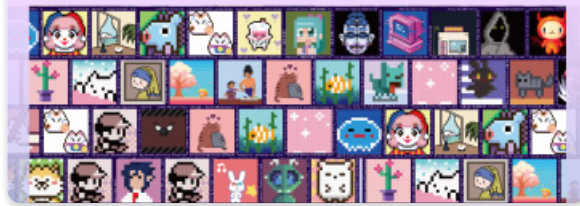
4.2 Wearing and Placement

The iTour-S features a strong metal clip for versatile attachment:

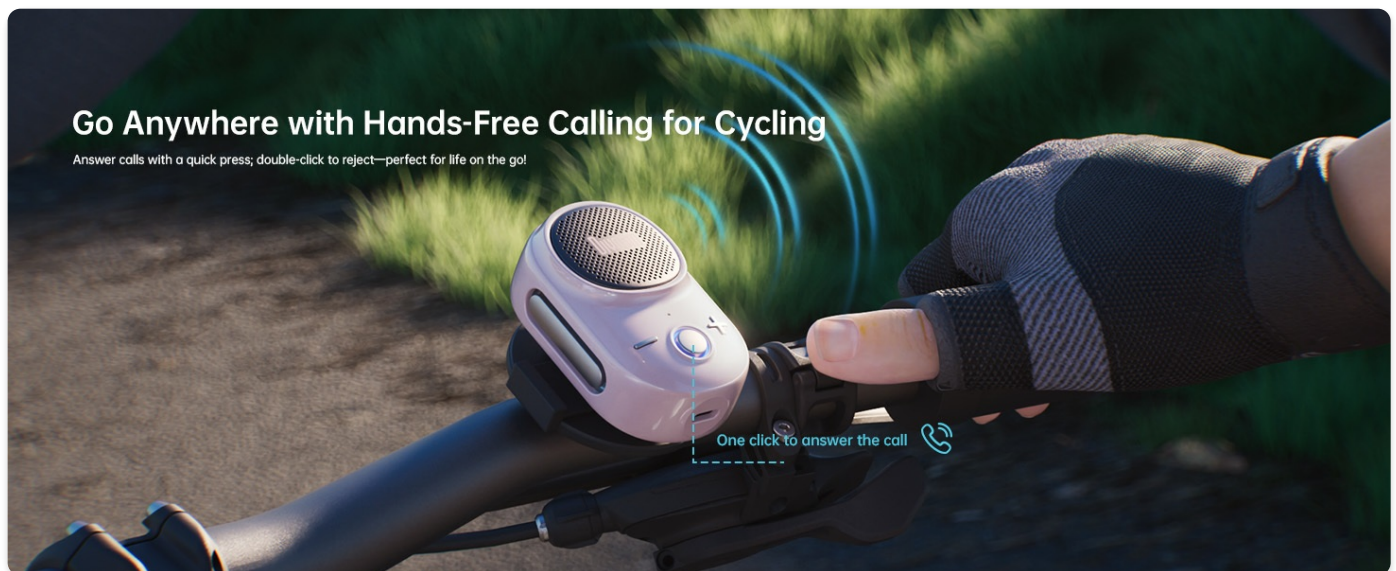
- **On Clothing:** Securely clip the speaker to your shirt collar, belt, or pocket for personal listening.
- **On Bags:** Attach it to backpack straps or bag handles for audio during walks or hikes.
- **On Equipment:** The clip can also be used to attach the speaker to bicycle handlebars or other compatible gear.

At Divoom, we fuse design and technology to spark creativity.

Join our vibrant pixel art community! Create and share your own designs with Divoom's monthly creative themes. The Divoom app is free to use and open to everyone — start your pixel art journey today.



The iTour-S speaker clipped to a shoulder strap, demonstrating its wearable design for adventures.



The speaker can be clipped to bicycle handlebars for hands-free calling and music while cycling.

5. CARE AND MAINTENANCE

5.1 Cleaning

Wipe the speaker with a soft, damp cloth. Do not use harsh chemicals, cleaning solvents, or strong detergents, as they may damage the surface or internal components.

5.2 Water and Dust Resistance Guidelines (IP67)

The iTour-S is IP67 rated, meaning it is protected against dust and can withstand immersion in water up to 1 meter (3.3 feet) for up to 30 minutes. To maintain its water and dust resistance:

- Ensure the charging port cover is securely closed before exposure to water or dust.
- Do not intentionally submerge the speaker for extended periods or beyond the specified depth.
- Avoid exposing the speaker to saltwater, chlorinated water, or other chemicals, as these can corrode the seals.

- If the speaker gets wet, dry it thoroughly with a soft, clean cloth before charging or opening the port cover.



The iTour-S speaker is IP67 rated, providing robust protection against water and dust.

5.3 Storage

Store the speaker in a cool, dry place away from direct sunlight and extreme temperatures. If storing for an extended period, charge the battery periodically to maintain its lifespan.

6. TROUBLESHOOTING

Problem	Possible Cause	Solution
Speaker does not power on.	Battery is depleted.	Charge the speaker using the provided USB-C cable.
No sound or low volume.	Volume is too low on speaker or connected device. Speaker is not connected.	Increase volume on both the speaker and your device. Ensure Bluetooth connection is established.
Cannot pair with Bluetooth device.	Speaker is not in pairing mode. Device's Bluetooth is off. Speaker is connected to another device.	Ensure speaker is in pairing mode (blinking light). Turn on Bluetooth on your device. Disconnect speaker from other devices or reset speaker.
TWS pairing fails.	Speakers are too far apart. One speaker is already connected to a device.	Ensure speakers are within close proximity. Disconnect both speakers from any other Bluetooth devices before attempting TWS pairing.

7. SPECIFICATIONS


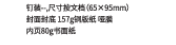

Feature	Detail
Model Name	Itour-s-Pink
Speaker Type	Single Speaker (Mono audio output)

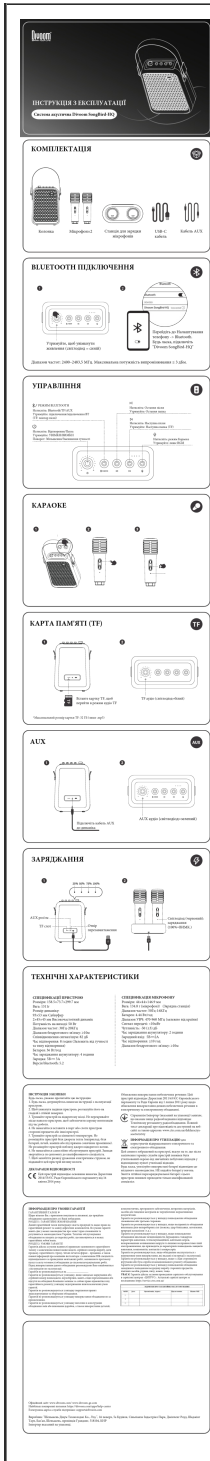
Feature	Detail
Connectivity Technology	Bluetooth 5.3
Speaker Maximum Output Power	4.2 Watts
Frequency Response	20 KHz
Battery Capacity	1000 Milliamp Hours
Charging Time	2.5 Hours
Playtime	Up to 10 hours (at 40% volume)
Waterproof Rating	IP67
Dustproof Rating	IP67
Product Dimensions	4.8D x 7.2W x 8.5H Centimetres
Item Weight	240 g
Included Components	Quick Start Guide, USB-C Charging Cable

8. WARRANTY AND SUPPORT

For warranty information, technical support, or any inquiries regarding your Divoom iTour-S speaker, please refer to the official Divoom website or contact Divoom customer service directly. Contact details are typically provided in the Quick Start Guide included with your product or on the manufacturer's website.

Related Documents

	<p>Divoom LoveLock Mini Portable Bluetooth Speaker User Manual & Specifications</p> <p>Comprehensive guide to the Divoom LoveLock mini portable Bluetooth speaker, covering setup, features, TWS mode, charging, specifications, safety, warranty, and declaration of conformity.</p>
	<p>Divoom Fairy-2 Portable Bluetooth Speaker User Manual</p> <p>Comprehensive user manual for the Divoom Fairy-2 portable Bluetooth speaker, covering setup, features like Bluetooth, TF card playback, FM radio, and karaoke functionality, along with technical specifications and safety guidelines.</p>
	<p>Divoom Tiivoo-2 Smart Pixel Speaker User Manual</p> <p>User manual for the Divoom Tiivoo-2 smart pixel speaker, detailing its features, functions, connectivity, and specifications. Learn how to use Bluetooth, FM radio, TF card, and USB modes, and connect to the Divoom app for enhanced features.</p>



[Divoom SongBird-HQ Portable Karaoke Speaker System User Manual](#)

Comprehensive user manual for the Divoom SongBird-HQ portable karaoke speaker system, covering setup, operation, Bluetooth, TF card, AUX, charging, specifications, safety, and warranty information.