

Hiseeu PK-8YHC285-CT-3

Hiseeu 4K PoE Security Camera System (8 Dome Cameras) - Instruction Manual

Model: PK-8YHC285-CT-3

1. SYSTEM OVERVIEW

The Hiseeu 4K PoE Security Camera System provides comprehensive surveillance for both indoor and outdoor environments. This system features 8 dome cameras with a 121° wide viewing angle, 4K Network Video Recorder (NVR), and advanced functionalities such as human and vehicle detection, two-way audio, color night vision, and 24/7 recording without monthly fees.

Key features include:

- **121° Wide View Angle:** The 2.8mm lens offers a significantly wider field of view compared to standard 78° lenses, enhancing coverage.
- **4K NVR with 7/24 Recording:** Supports continuous 24/7/365 recording and various playback modes including motion detection and synchronized playback for up to 4 cameras.
- **Real-Time Two-Way Audio:** Enables direct communication through the phone application and audio recording via the NVR.
- **Intruder Alarm with Spotlight:** Triggers alarm lights and sends push notifications via the free mobile application upon detecting a person, deterring suspicious activity. Color night vision is available when the alarm light is active.
- **Flexible Connectivity:** Operates locally without internet for TV monitor surveillance. Remote access via the mobile application or PC client software requires an internet connection.



Image 1.1: Overview of the Hiseeu 4K PoE Security Camera System.

2. WHAT'S IN THE BOX

Upon unboxing your Hiseeu 4K PoE Security Camera System, verify that all components listed below are present:

- 1x 4K PoE Network Video Recorder (NVR)
- 8x 5MP PoE Dome Security Cameras
- 1x 3TB Hard Drive (Pre-installed inside the NVR box)
- 4x 60FT Ethernet Cables
- 4x 100FT Ethernet Cables
- 1x NVR Power Adapter
- 1x HDMI Cable
- 1x USB Mouse
- 2x Warning Stickers
- 8x Screws for camera installation

- 1x User Manual
- 1x 3ft Ethernet Cable (for NVR to router connection)

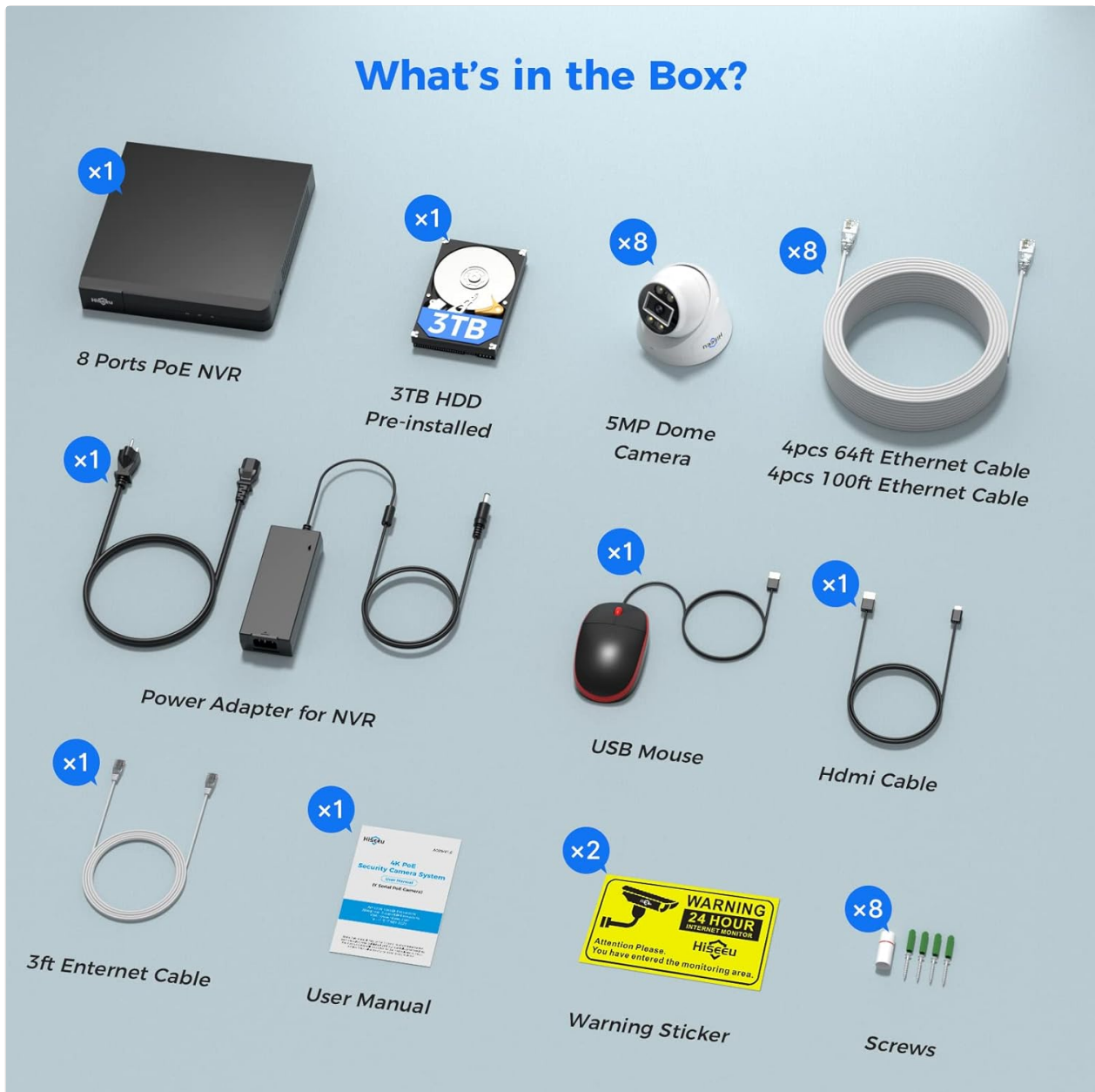


Image 2.1: All components included in the Hiseeu 4K PoE Security Camera System package.

Video 2.1: A detailed unboxing and overview of the Hiseeu 5MP 8 PoE Camera System package contents.

3. SETUP INSTRUCTIONS

3.1 Initial Connection

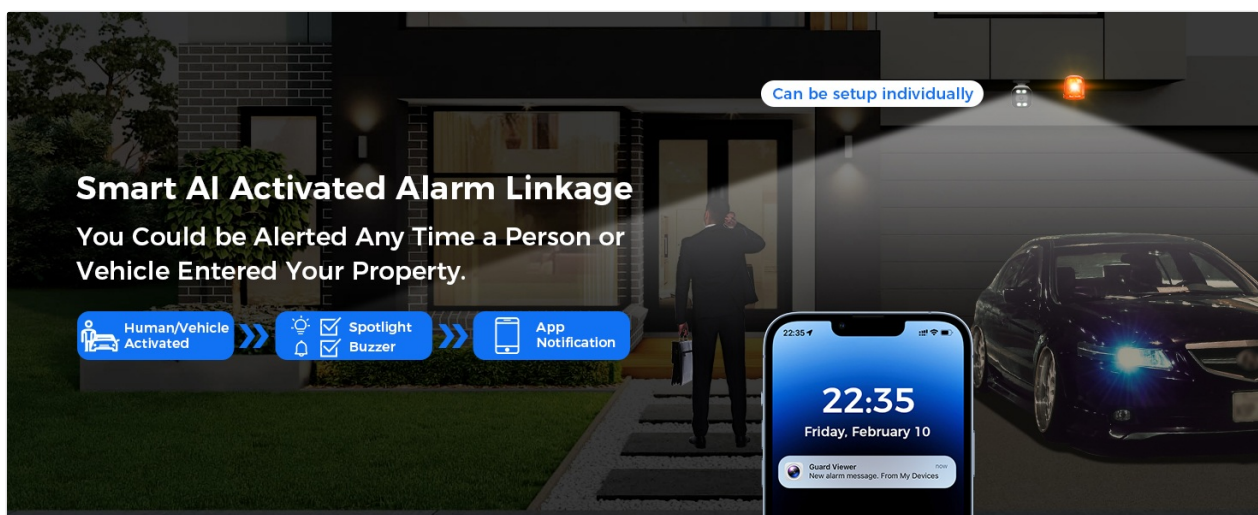
1. **Connect Cameras to NVR:** Use the provided Ethernet cables to connect each dome camera to the PoE ports on the back of the NVR. The NVR supplies power and video signal through a single cable.
2. **Connect NVR to Monitor:** Connect the NVR to a monitor using the HDMI or VGA cable.
3. **Connect NVR to Power:** Plug the NVR power adapter into the NVR and then into a power outlet.
4. **Connect USB Mouse:** Plug the USB mouse into one of the NVR's USB ports for navigation.



Image 3.1: Illustration of Power over Ethernet (PoE) connection for cameras and NVR setup.

3.2 Network Connection (Optional for Remote Access)

For local surveillance via a TV monitor, an internet connection is not required. However, to access your system remotely via the mobile application or PC client software, connect the NVR to your router using the provided 3ft Ethernet cable.



3.3 System Expansion

The NVR features 8 PoE ports and is expandable to 16 channels. To add more cameras beyond the initial 8, an additional PoE switch is required. Connect the additional cameras to the PoE switch, and then connect the PoE switch to the NVR.

4. OPERATING INSTRUCTIONS

4.1 Recording and Playback

The system supports continuous 24/7/365 recording. You can configure various recording modes:

- **Regular Recording:** Continuous recording throughout the day.
- **Motion Detection Recording:** Records only when motion is detected, conserving storage space.

Playback options include:

- **Synchronized Playback:** View footage from up to 4 cameras simultaneously.
- **Motion Detection Playback:** Quickly review events triggered by motion.
- **Common Playback:** Standard review of recorded footage.

7/24/365 Record & Smart Playback



2024-02-11
10:12:30

2024-02-11
11:23:41

2024-02-11
15:37:22

2024-02-11
17:03:54

Image 4.1: Interface for 24/7 recording and smart playback on both desktop and mobile devices.

4.2 Human and Vehicle Detection

The system utilizes AI-powered human and vehicle detection to minimize false alarms. When a person or vehicle enters your property, the system can trigger an alarm and send notifications.

Intuder Warning

Spotlight / Buzzer / App Notification



Image 4.2: Example of human and vehicle detection with real-time mobile alerts.

Video 4.1: Demonstrates the 121-degree wide view and human detection capabilities of the 5MP PoE Camera System.

4.3 Two-Way Audio

Each camera is equipped with a microphone and speaker, enabling two-way audio communication. You can speak through the mobile app to individuals near the camera and hear audio from the camera's location.

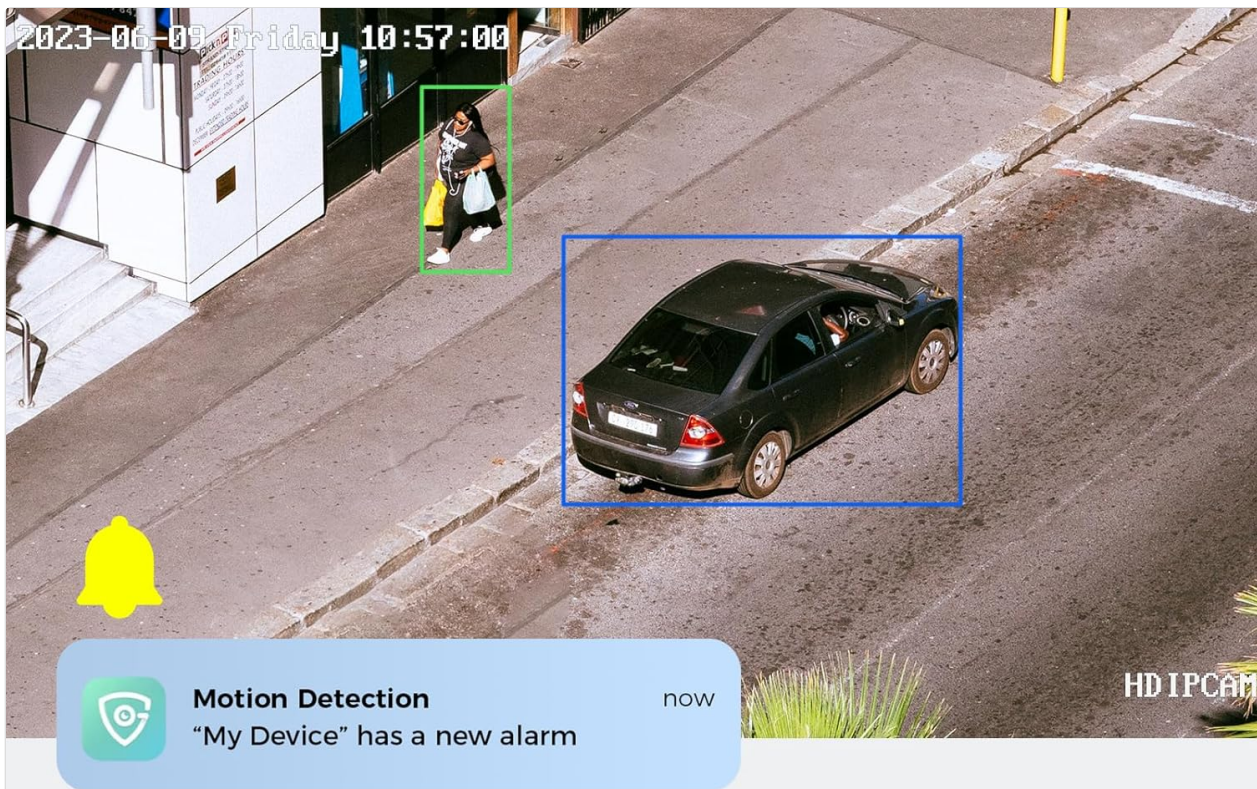
Real Time 2-Way Audio



Image 4.3: Illustrates the real-time two-way audio feature via the mobile application.

4.4 Color Night Vision and Intruder Warning

The cameras provide color night vision when the integrated alarm spotlight is activated. This feature enhances visibility in low-light conditions. The alarm spotlight can be triggered by motion detection to deter intruders.



Human/Vehicle Detection

Easy&Free Remote Access



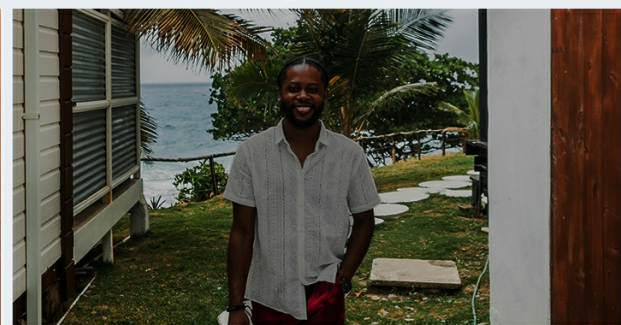
Image 4.4: An intruder warning system with a spotlight activated.

AI WDR Function

Capture Finest Detials in Place with Weak/Exposure Light



Hiseeu version in WDR Mode



Other version without WDR Function

Image 4.5: Comparison demonstrating the clarity of Hiseeu's color night vision.

4.5 Remote Access

Download the free Hiseeu mobile application (available on Google Play and App Store) or the PC client software to access your camera system remotely. This allows live viewing, playback, and system management

from anywhere with an internet connection.

5. MAINTENANCE

5.1 Regular Cleaning

Periodically clean the camera lenses with a soft, damp cloth to ensure clear image quality. Avoid abrasive cleaners that could scratch the lens surface.

5.2 Firmware Updates

Check the Hiseeu official website or your mobile application for available firmware updates. Keeping your system's firmware up-to-date ensures optimal performance, security, and access to new features.

5.3 Hard Drive Management

The NVR includes a pre-installed 3TB hard drive. Ensure the hard drive is functioning correctly for continuous recording. If the hard drive becomes full, the system will typically overwrite the oldest footage. You can configure recording settings to manage storage efficiently.

5.4 Connection Check

Regularly inspect all cable connections (Ethernet, power, HDMI/VGA) to ensure they are secure and free from damage. Loose connections can lead to signal loss or system malfunction.

6. TROUBLESHOOTING

6.1 No Video Display

- **Check Power:** Ensure the NVR and all cameras are properly powered.
- **Cable Connections:** Verify that all Ethernet cables are securely connected between cameras and the NVR, and the HDMI/VGA cable is connected between the NVR and the monitor.
- **Monitor Input:** Confirm your monitor is set to the correct input source (HDMI/VGA).
- **Camera Status:** Check if the cameras have indicator lights, which may signal power or connection status.

6.2 Remote Access Issues

- **Internet Connection:** Ensure the NVR is connected to your router and has an active internet connection.
- **App/Software:** Verify that the mobile application or PC client software is the latest version.
- **Login Credentials:** Double-check your login details for the app/software.
- **Firewall/Router Settings:** If issues persist, check your router's firewall settings to ensure they are not blocking the system's communication.

6.3 Motion Detection Not Working

- **Sensitivity Settings:** Adjust the motion detection sensitivity in the NVR or app settings.
- **Detection Zones:** Ensure detection zones are correctly configured and cover the desired areas.
- **Obstructions:** Clear any physical obstructions (e.g., branches, spiderwebs) that might interfere with the camera's view.
- **Lighting:** Ensure adequate lighting for effective motion detection, especially at night.

7. SPECIFICATIONS

Feature	Specification
Brand	Hiseeu
Connectivity Technology	Wired
Video Capture Resolution	5MP
Special Feature	App Control
Number of Channels	16
Memory Storage Capacity	3 TB
Power Source	Corded Electric
Item dimensions L x W x H	15 x 12 x 13 inches
Recommended Uses For Product	Home, Business, Outdoor, Indoor
Compatible Devices	Laptops, Personal Computers, Smartphones, TV
Low light technology	Night Vision
Night Vision Range	60 Feet
Frame Rate	24, 30, 60 fps
Recording Mode	7/24 Record with Audio
Total USB Ports	2
Hardware Interface	Ethernet
Lens Type	Fixed
Video Input	RJ45
Viewing Angle	121 Degrees
Manufacturer	Hiseeu
Product Dimensions	15 x 12 x 13 inches
Item Weight	23.1 pounds
Item model number	PK-8YHC285-CT-3
Date First Available	November 14, 2024

8. WARRANTY AND SUPPORT

Hiseeu is committed to providing reliable products and customer satisfaction. Your security camera system

comes with the following:

- **Product Warranty:** The system is covered by a product warranty. Please refer to the warranty card included in your package for specific terms and conditions.
- **30-Day Free Return:** You are eligible for a 30-day free return period from the date of purchase.
- **Lifetime Technical Support:** Hiseeu offers lifetime technical support for its products. For assistance with setup, operation, or troubleshooting, please contact our support team.

For technical support, please refer to the contact information provided in your user manual or visit the official Hiseeu website.



Image 8.1: Hiseeu's commitment to customer support and product assurance.