

[Manuals.plus](#) /

> [Xkorce](#) /

> Xkorce Bhp70 Electronic Drum Kit User Manual

Xkorce Bhp70

Xkorce Bhp70 Electronic Drum Kit User Manual

Model: Bhp70

1. INTRODUCTION

Thank you for choosing the Xkorce Bhp70 Electronic Drum Kit. This manual provides essential information for the proper assembly, operation, and maintenance of your new electronic drum set. Please read these instructions carefully before use to ensure optimal performance and longevity of the product.

2. PACKAGE CONTENTS AND COMPONENTS OVERVIEW

Before assembly, verify that all components listed below are present in your package. Refer to the diagrams for visual identification of each part.

- 1 x Sudoku HP Module (Drum Module)
- 3 x 6-inch Mesh Toms
- 1 x 6-inch Mesh Snare Drum
- 1 x 10-inch Hi-Hat with Foot Controller Pedal
- 1 x 10-inch Crash Cymbal
- 1 x 10-inch Ride Cymbal
- 1 x Kick Pedal
- 1 x Sturdy Carbon Steel Pipe Bracket (Drum Rack)
- 1 x Pair of Headphones
- 1 x Pair of Drumsticks
- All necessary connecting cables, rods, fasteners, and power adapter.
- 1 x Drum Stool (Throne)
- 1 x Drum Key
- 1 x Audio Cable

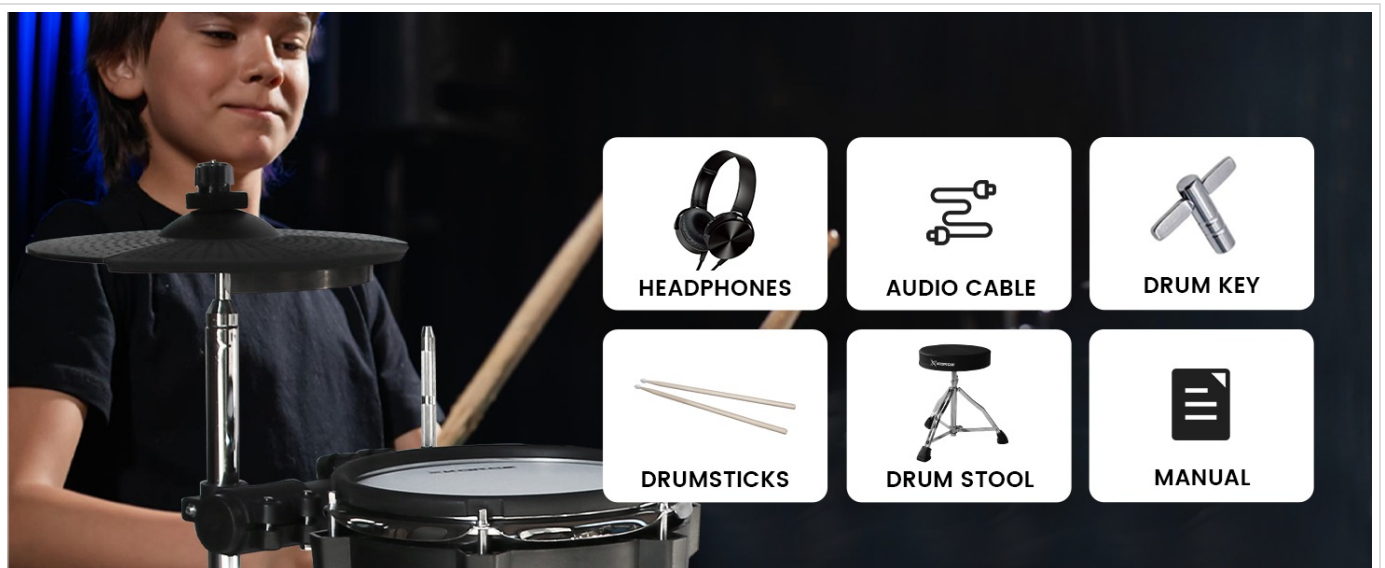


Can be folded and placed against the wall when not in use.



- ① SUDOKU HP MODULE
- ② (3) 6" MESH TOMS
- ③ 6" MESH SNARE DRUM
- ④ 10" HI-HAT WITH FOOT CONTROLLER PEDAL
- ⑤ 10" CRASH
- ⑥ 10" RIDE
- ⑦ KICK PEDAL

Figure 2.1: Assembled Xkorce Bhp70 Electronic Drum Kit with labeled components including module, mesh pads, cymbals, and pedals.



3. ASSEMBLY INSTRUCTIONS

Follow these steps to assemble your Xkorce Bhp70 Electronic Drum Kit. It is recommended to assemble the kit in the area where it will be used.

1. **Unpack Components:** Carefully remove all parts from the packaging and lay them out on a clean, flat surface.
2. **Assemble the Drum Rack:** Connect the carbon steel pipe bracket sections as shown in the diagram (Figure 2.1). Ensure all clamps and fasteners are securely tightened using the provided drum key.
3. **Attach Drum Pads:**
 - Mount the 6-inch mesh toms onto the rack arms.
 - Attach the 6-inch mesh snare drum to its designated position on the rack.



Figure 3.1: Close-up of the 6-inch mesh snare drum.

4. Install Cymbals:

- Attach the 10-inch Hi-Hat, Crash, and Ride cymbals to their respective stands on the drum rack.
- Ensure cymbals are securely fastened but allow for natural movement when struck.



Figure 3.2: Close-up of a 10-inch crash cymbal.

5. **Position Pedals:** Place the Kick Pedal and Hi-Hat Foot Controller Pedal on the floor in their playing positions.
6. **Mount the Drum Module:** Secure the Sudoku HP Module to the designated mounting arm on the drum rack.
7. **Connect Cables:**
 - Connect each drum pad and cymbal to the corresponding input on the drum module using the provided cables. Refer to the module's input labels for correct connections.
 - Connect the Kick Pedal and Hi-Hat Foot Controller Pedal to their respective inputs.
8. **Connect Power:** Plug the power adapter into the DC IN port on the module and then into a wall outlet.
9. **Assemble Drum Stool:** Assemble the drum stool according to its separate instructions (if provided) and adjust to a comfortable height.

Note: Ensure all connections are firm to prevent signal loss during play. The drum kit can be folded for storage when not in use.

4. OPERATING INSTRUCTIONS

This section details the functions of the Sudoku HP Module and how to operate your drum kit.

4.1 Drum Module Overview

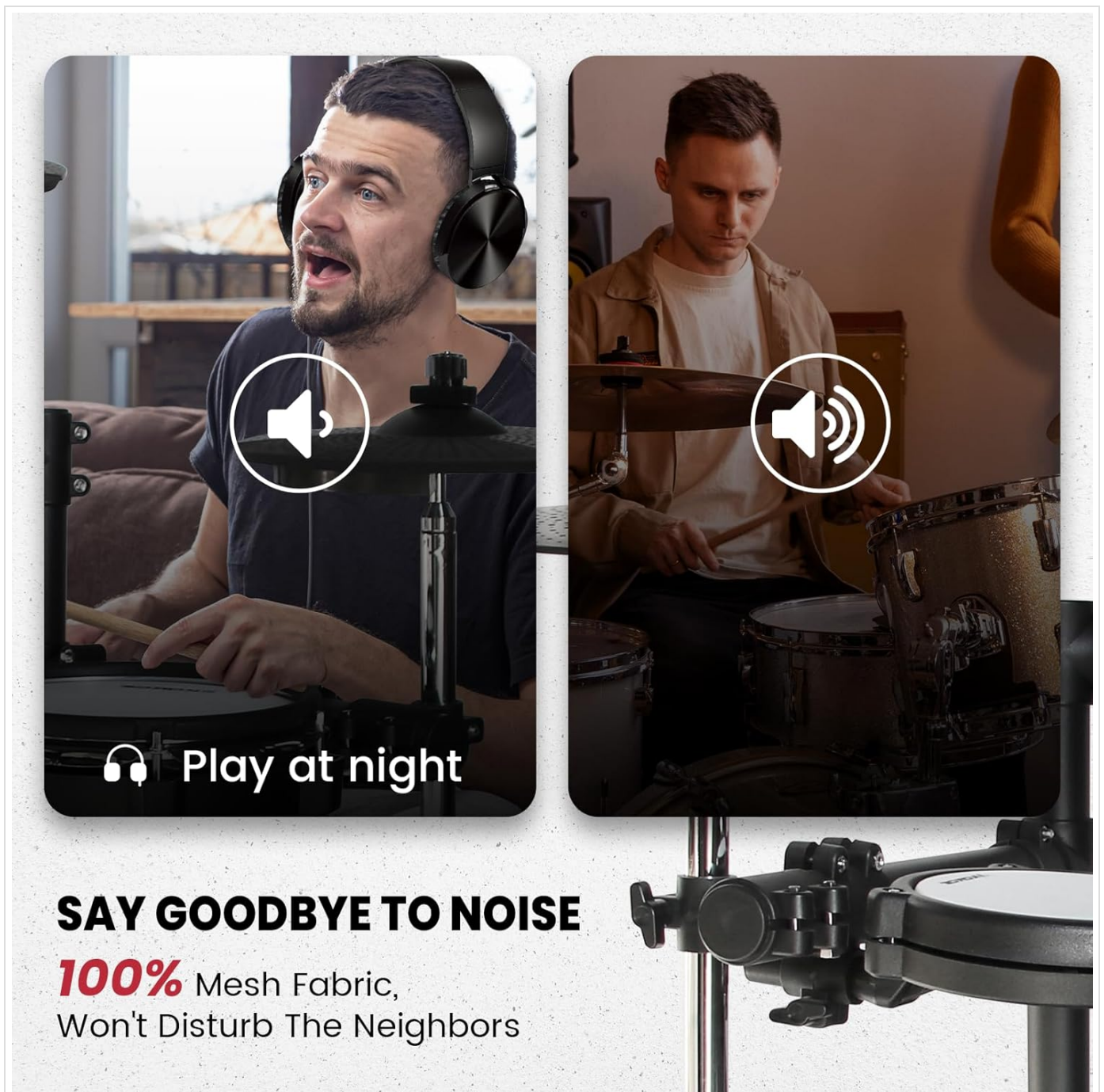


Figure 4.1: Front panel of the Sudoku HP Drum Module.

The drum module is the central control unit for your electronic drum kit. It features a display, a master volume knob, and various buttons for sound selection, kit changes, and other functions.

- **Power Button:** Located on the top right, press to turn the module ON/OFF.
- **Volume Knob:** Adjusts the overall output volume.
- **VOICE Button:** Selects individual drum sounds.
- **SONG Button:** Accesses built-in demo songs.
- **KIT +/- Buttons:** Navigates through preset and user drum kits.
- **PAGE Button:** Cycles through different parameter pages for editing.
- **SAVE Button:** Saves custom settings.
- **REC Button:** Initiates recording.
- **PLAY/PAUSE Button:** Controls playback of recorded tracks or demo songs.
- **MUTE Button:** Mutes specific sounds or tracks.
- **CLICK Button:** Activates/deactivates the metronome.
- **SETUP Button:** Enters the setup menu for advanced settings.

4.2 Basic Operation

1. **Power On:** Press the Power button. The display will light up.
2. **Adjust Volume:** Turn the Volume knob to a comfortable listening level.
3. **Select a Drum Kit:** Use the **KIT +/-** buttons to cycle through the 20 preset drum kits.
4. **Play Drums:** Strike the mesh pads and cymbals with the drumsticks. Use the pedals for kick and hi-hat control.
5. **Practice with Metronome:** Press the **CLICK** button to activate the metronome. Adjust tempo in the setup menu if needed.
6. **Play Demo Songs:** Press the **SONG** button to browse and play built-in demo songs.

4.3 Advanced Functions and Connectivity

FLEXIBLE CONNECTIVITY FOR ANY SETUP



1. 1-3 Velocity Setting

2. Sensitivity 1-6

3. Threshold/Retrigger 1-32

4. Dual Bluetooth Audio/Midi

5. Build In Metronome

6. Support Recording and Playback



Figure 4.2: Rear panel of the Sudoku HP Drum Module with connectivity ports.

- **Headphones (PHONES):** Connect headphones to the PHONES jack for private practice. The volume can be adjusted via the master volume knob.



Thank you for choosing our products. We sincerely hope that you will have a pleasant shopping experience. If you have any questions or encounter any problems after receiving the goods, whether it is about the **installation instructions, function consultation** or **quality problems** encountered, please contact us by email at any time. Our customer service team will serve you wholeheartedly and ensure that your problems are solved promptly and effectively.

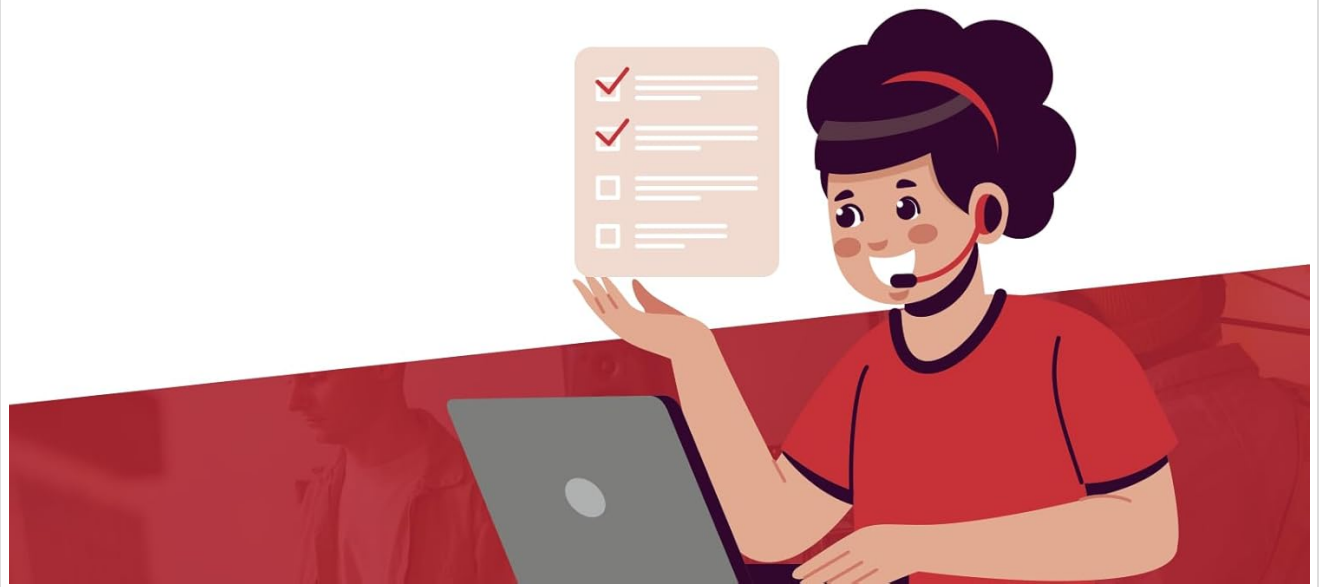


Figure 4.3: Using headphones for quiet practice.

- **External Audio Input (MIX IN):** Connect an external audio device (e.g., smartphone, MP3 player) to the MIX IN jack to play along with your favorite music.
- **Audio Output (OUTPUT):** Connect the OUTPUT jack to an amplifier, PA system, or recording interface for live performance or studio recording.
- **USB Connectivity:** Connect the module to a computer via the USB port for MIDI data transmission. This allows you to use the drum kit as a MIDI controller for software instruments or to record MIDI data into a Digital Audio Workstation (DAW).
- **Dual Bluetooth Function:**
 - **Bluetooth Audio:** Connect your smartphone or tablet wirelessly to the module to stream audio and play along with music.
 - **Bluetooth MIDI:** Connect to compatible apps or software for wireless MIDI control and learning functions.
 - *To activate Bluetooth:* Refer to the module's display and use the PAGE and KIT buttons to navigate to Bluetooth settings. Follow on-screen prompts to pair with your device.
- **Recording Function:** Press the **REC** button to start recording your performance. Press **PLAY/PAUSE** to stop and listen to your recording.
- **Custom Drum Kits:** The module supports 1 user-customizable drum kit. Use the **VOICE** and **PAGE** buttons to select individual drum sounds and assign them to pads. Press **SAVE** to store your custom kit.

- **Sensitivity Settings:** Access the SETUP menu to adjust pad sensitivity (1-6), velocity settings (1-3), and threshold/retrigger (1-32) for personalized response.

5. KEY FEATURES

- **7-Piece Configuration:** Standard setup with 3x 6-inch single-zone mesh toms, 1x 6-inch mesh snare, 2x 10-inch cymbals (crash, ride) with full strike zones, and a 10-inch Hi-hat.
- **Extensive Sound Library:** Features 360 distinct drum sounds and 20 preset drum kits, covering various musical genres. Includes 1 user-customizable drum kit.
- **Quiet Mesh Pads:** All-mesh woven drum heads provide a realistic feel and significantly reduce acoustic noise, making the kit suitable for quiet practice environments.
- **Flexible Connectivity:** Supports USB connection for computer integration (MIDI), dual Bluetooth for audio streaming and MIDI, PHONES output for headphones, MIX IN for external audio, and OUTPUT for amplifiers/recording.
- **Practice Tools:** Built-in metronome, recording function, and speed adjustment features aid in learning and skill development.
- **Complete Package:** Includes headphones, drumsticks, drum stool, and all necessary cables and hardware for immediate play.

6. MAINTENANCE

Proper maintenance ensures the longevity and optimal performance of your electronic drum kit.

- **Cleaning:** Wipe down the drum pads, cymbals, module, and rack with a soft, dry cloth. For stubborn dirt, use a slightly damp cloth and then dry thoroughly. Avoid abrasive cleaners or solvents.
- **Cable Management:** Keep cables neatly organized and secured to prevent tangling, damage, or accidental disconnections.
- **Pad Care:** Avoid striking the mesh pads with excessive force or sharp objects, which can damage the mesh.
- **Storage:** When not in use, especially for extended periods, store the drum kit in a dry, dust-free environment. The kit can be folded for compact storage.
- **Environmental Conditions:** Avoid exposing the kit to extreme temperatures, direct sunlight, high humidity, or excessive dust.

7. TROUBLESHOOTING

If you encounter issues with your Xkorce Bhp70 Electronic Drum Kit, refer to the following common problems and solutions.

Problem	Possible Cause	Solution
No sound from pads/cymbals	<ul style="list-style-type: none"> ◦ Cables not connected properly. ◦ Module volume too low. ◦ Headphones/speakers not connected or faulty. ◦ Module not powered on. 	<ul style="list-style-type: none"> ◦ Check all cable connections to the module and pads. ◦ Increase the master volume on the module. ◦ Ensure headphones/speakers are connected and functional. ◦ Verify the module is powered on.
Pads/Toms feel loose or move	<ul style="list-style-type: none"> ◦ Clamps on the drum rack are not tightened. 	<ul style="list-style-type: none"> ◦ Use the drum key to securely tighten all clamps and fasteners on the drum rack.

Problem	Possible Cause	Solution
Kick pedal or Hi-Hat pedal not responding	<ul style="list-style-type: none"> Pedal cable disconnected or faulty. Pedal sensor issue. 	<ul style="list-style-type: none"> Ensure the pedal cable is firmly connected to the module. Test with another cable if available. Check module settings for pedal calibration if applicable (refer to SETUP menu).
Bluetooth not connecting	<ul style="list-style-type: none"> Bluetooth not activated on module or device. Device too far from module. Interference. 	<ul style="list-style-type: none"> Ensure Bluetooth is enabled on both the drum module (via SETUP menu) and your external device. Move the device closer to the module. Restart both the module and the external device. Ensure no other devices are actively paired.
Distorted sound from Hi-Hat	<ul style="list-style-type: none"> Excessive striking force. Sensitivity settings. 	<ul style="list-style-type: none"> Adjust your playing dynamics. Lower the sensitivity or threshold settings for the Hi-Hat in the module's SETUP menu.

8. SPECIFICATIONS

Feature	Detail
Model Name	Bhp70
Drum Pads	4x 6-inch Mesh Pads (3 Toms, 1 Snare)
Cymbals	1x 10-inch Hi-Hat, 1x 10-inch Crash, 1x 10-inch Ride
Pedals	1x Kick Pedal, 1x Hi-Hat Foot Controller Pedal
Drum Module	Sudoku HP Module
Sounds	360
Drum Kits	20 Preset, 1 User Custom
Connectivity	USB (MIDI), Dual Bluetooth (Audio/MIDI), PHONES, MIX IN, OUTPUT
Material Type	Mesh (Drum Heads)
Item Weight	43.9 pounds (approx.)
Package Dimensions	26.77 x 23.62 x 8.66 inches (approx.)

9. WARRANTY AND SUPPORT

Xkorce is committed to providing quality products and customer satisfaction. For any questions regarding installation, functionality, or quality issues, please contact our customer service team. We are dedicated to resolving your concerns promptly and effectively. Please retain your proof of purchase for warranty claims. Specific warranty terms and conditions may apply and are available upon request or through the official Xkorce website.

