

## ZYWELL ZY608-URE-Black-US001

# ZYWELL ZY608 Thermal Receipt Printer User Manual

Model: ZY608-URE-Black-US001

## 1. PRODUCT OVERVIEW

The ZYWELL ZY608 is a high-performance thermal receipt printer designed for various point-of-sale (POS) and kitchen environments. It features an automatic cutter, an audio-visual alarm system to prevent missed orders, and supports both 58mm and 80mm paper widths with flexible paper output options (forward and upward). This printer offers multiple connectivity interfaces including USB, Serial, and Ethernet, ensuring broad compatibility with Windows, Linux, and Mac operating systems.



Image 1.1: ZYWELL ZY608 Thermal Receipt Printer. This image shows the compact black printer with a receipt emerging from the top, demonstrating its primary function.

## 2. SETUP GUIDE

## 2.1. What's in the Box

- ZYWELL ZY608 Thermal Receipt Printer
- User Manual
- USB Cable
- Paper Roll
- Power Cord
- USB Flash Drive (containing drivers and tools)
- Paper Stopper
- USB C to USB Adapter

## 2.2. Physical Setup

1. **Loading Paper:** Open the printer cover. Insert the thermal paper roll, ensuring the paper feeds from the bottom and extends out of the top slot. Close the cover securely. The printer supports both 58mm and 80mm paper widths.
2. **Connecting Cables:** Connect the power cord to the printer and a power outlet. Connect the desired interface cable (USB, LAN, or Serial) from the printer to your computer or network device.

# ZY608 THERMAL RECEIPT PRINTER

Product quality and reliable, simple operation.

Power Button

Feed Button

Cover Open  
Button

Indicator light



Power



D/K



USB



RS232



Ethernet

*Image 2.1: Printer Buttons and Ports. This diagram illustrates the location of the Power Button, Feed Button, Cover Open Button, and Indicator Light on the printer's top and front, along with the Power, D/K (Cash Drawer), USB, RS232 (Serial), and Ethernet ports on the rear.*

## 2.3. Driver Installation and Initial Configuration

The included USB flash drive contains the necessary drivers and utility software for the printer. Insert the USB flash drive into your computer and follow the instructions to install the drivers for your operating system (Windows, Linux, or Mac).

For specific POS system integrations, such as Square, refer to the following:

- **Square Compatibility:** The printer is compatible with Square (LAN port suggested). Note that iPad and iPhone devices do not support USB connection to the printer. If using Square on iPad/iPhone or with a Square Stand, the printer must be connected via a network cable (LAN).



Image 2.2: iPad to Printer LAN Connection. This image illustrates how an iPad can connect to the printer wirelessly via Wi-Fi to a router, which is then connected to the printer via an Ethernet cable, enabling Square functionality.

### 3. OPERATING INSTRUCTIONS

#### 3.1. Basic Printing

Once the printer is connected and drivers are installed, you can initiate printing from your POS software or application. The printer will automatically cut the paper after each receipt.

#### 3.2. Flexible Paper Output

The ZY608 printer supports two paper output methods: forward and upward. This flexibility allows for adaptation to different counter layouts and operational needs.

# MULTIPLE WAYS TO PRINT OUT PAPER



Paper Up

Paper Forward



Image 3.1: Multiple Ways to Print Out Paper. This image displays two printer configurations: one with paper exiting upwards from the top, and another with paper exiting forwards from the front, illustrating the versatile output options.

### 3.3. Audible and Visual Alarm

The ZY608 kitchen printer is equipped with an audible and visual alarm system. After printing, it automatically emits four short "beep" sound prompts and a visual light cue to alert staff, helping to prevent missed orders. This feature is particularly useful in busy kitchen environments.

### 3.4. Cash Drawer Connection

The printer can be connected to a cash drawer. To enable cash drawer functionality, use the provided utility software:

1. Connect your computer and printer via USB.

2. Download "Printer Test V5.2C" from the USB flash drive (Path: Driver installer-PrinterTest-PrinterTestV5.2C).
3. Open the "Printer Test V5.2C" software, select "Port Select" and click "USB".
4. Click on "Advanced", find "Cutter with Cash Drawer" and select "ON". A successful setup will be indicated by a printer beep.

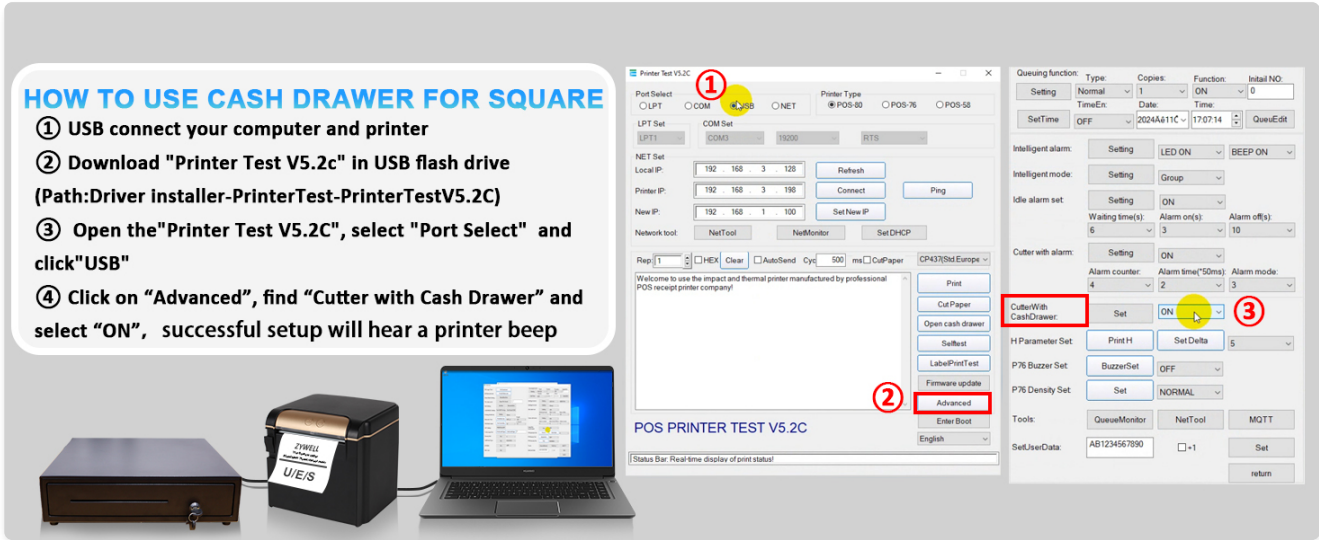


Image 3.2: How to Use Cash Drawer for Square. This image provides a step-by-step guide within the "Printer Test V5.2C" software interface to enable the cash drawer function, showing the USB connection and software settings.

### 3.5. Supported Systems and Connections

The ZY608 printer offers broad compatibility with various POS systems and operating environments:

Printer Compatibility Matrix

System	OS	USB	LAN	SERIAL
Loyverse	Android	✓	✓	X
	iOS	X	✓	X
W&OPOS	Android	✓	✓	X
Square	Android	✓	✓	X
	iOS	X	✓	X
Square Register	POS Machine	X	✓	X
Square stand pos	POS Machine	X	✓	X
SumUp	Android	✓	✓	X
	iOS	X	✓	X
Uber Eats	Android	✓	✓	X
	iOS	X	✓	X
Shopify POS	Android	✓	✓	X
	iOS	X	✓	X

**Note:** The printer is **not** compatible with Grubhub, Doordash, Lightspeed, or Postmates.

## 4. MAINTENANCE

Regular maintenance ensures optimal performance and extends the lifespan of your ZYWELL ZY608 printer.

### 4.1. Cleaning

- Periodically clean the printer's exterior with a soft, damp cloth.
- To clean the print head, use a lint-free cloth lightly dampened with isopropyl alcohol. Ensure the printer is turned off and cool before cleaning.

### 4.2. Print Head Durability

The print head is designed for long-lasting durability, capable of printing up to 150 kilometers. It also features overheating protection to prevent damage during continuous operation.

## 5. TROUBLESHOOTING

### 5.1. Printer Not Responding

- Check all cable connections (power, USB/LAN/Serial) to ensure they are secure.
- Verify the printer is powered on and the indicator light is active.
- Ensure the correct printer driver is installed and selected in your operating system's printer settings.

### 5.2. Missing Orders (Kitchen Environment)

The audio-visual alarm is designed to prevent missed orders. If orders are still being missed, ensure the alarm feature is enabled. You can adjust or disable the alarm using the "Printer Test V5.2C" utility:

1. Connect your Windows computer and printer via USB.
2. Download "Printer Test V5.2C" from the USB flash drive.
3. Open the "Printer Test V5.2C" software, select "Port Select" and click "USB".
4. Click on "Advanced", find "Idle alarm set" and select "OFF" if you wish to disable it, or adjust settings as needed.



- ### HOW TO TURN OFF THE AUDIBLE AND VISUAL ALARMS
- ① USB connect your Windows and printer
  - ② Download "Printer Test V5.2c" in USB flash drive  
(Path:Driver installer-PrinterTest-PrinterTestV5.2C)
  - ③ Open the"Printer Test V5.2C", select "Port Select" and click"USB"
  - ④Click on "Advanced", find "Idle alarm set" and select "OFF"

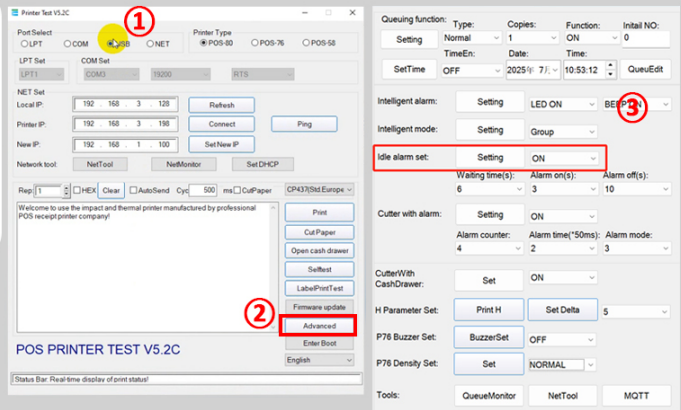


Image 5.1: How to Turn Off Audible and Visual Alarms. This image provides a guide to navigating the "Printer Test V5.2C" software to manage the printer's alarm settings.

### 5.3. Printing Issues with Square (iPad/iPhone)

As noted in the compatibility section, iPad and iPhone devices do not support USB connection for printing. Ensure your printer is connected via LAN (Ethernet) to your network for Square functionality on these devices.

## 6. SPECIFICATIONS

### ZYWELL ZY608 Thermal Receipt Printer Specifications

Feature	Detail
Model Name	ZY608-URE-Black-US001
Printing Technology	Thermal
Maximum Print Speed	300 mm/s
Maximum Print Resolution	203 dpi
Supported Paper Width	58mm / 80mm
Connectivity Technology	USB, Serial (RS232), Ethernet
Auto-Cutter	Yes
Alarm System	Audible and Visual Alarm
Paper Output Options	Forward, Upward
Product Dimensions (D x W x H)	5.5" x 5.5" x 5.1" (137mm x 137mm x 130mm)
Item Weight	3.72 pounds
Operating System Compatibility	Windows, Linux, Mac
Print Head Durability	150 kilometers

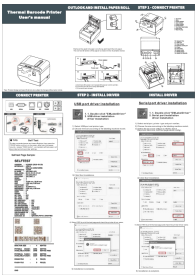

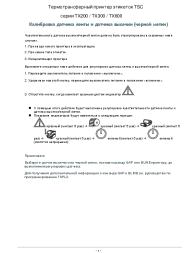

Feature	Detail

## 7. WARRANTY AND SUPPORT

For warranty information and technical support, please contact ZYWELL customer service. Details can typically be found on the manufacturer's official website or through the retailer where the product was purchased.

ZYWELL is committed to providing reliable products and support to its users worldwide.

### Related Documents - ZY608-URE-Black-US001

	<p><a href="#">Thermal Barcode Printer User's Manual: Setup, Drivers, and Troubleshooting</a></p> <p>Detailed user manual for Thermal Barcode Printers. Covers paper roll installation, connecting the printer, installing drivers for USB, Serial, LAN, Bluetooth, and WiFi, performing self-tests, and troubleshooting common issues. Includes maintenance tips and important warnings.</p>
	<p><a href="#">Zywell Zy-4603 Thermal Printer &amp; Tablet Stands (TS31, TS32, BS02 Series) - Specifications and Features</a></p> <p>Explore the Zywell Zy-4603 thermal transfer desktop printer and a range of adjustable tablet stands including TS31, TS32, Zy-BS02A, and Zy-BS02B. Detailed specifications, features, and compatibility information.</p>
	<p><a href="#">TSC TX200/TX300/TX600 Series Printer Calibration and Self-Diagnosis Guide</a></p> <p>Comprehensive guide for TSC TX200, TX300, and TX600 series thermal transfer printers covering sensor calibration procedures, indicator status sequences, and detailed self-diagnosis printout interpretation.</p>
	<p><a href="#">Keychron V1 Knob Mechanical Keyboard Quick Start Guide - Setup &amp; Customization</a></p> <p>Get started with your Keychron V1 Knob mechanical keyboard. This quick start guide provides instructions on system switching, VIA software setup, key remapping, backlight control, and factory reset for Mac and Windows.</p>



### [AudioQuest DragonFly Black v1.5: Flight Manual & Setup Guide](#)

Comprehensive guide to setting up and using the AudioQuest DragonFly Black v1.5 USB DAC with computers, mobile devices, and accessories like JitterBug and DragonTail. Learn about audio formats, system preferences, and device management.



### [Guía de Inicio Rápido Nuance Audio Glasses: Configuración, Emparejamiento y Calibración](#)

Guía completa para empezar con tus Nuance Audio Glasses. Aprende a descargar la app, crear tu cuenta, emparejar tus gafas y realizar la calibración personal para una experiencia de audio optimizada.