

Dyson 475606-01

Dyson Airwrap™ Origin User Manual

Model: 475606-01

INTRODUCTION

The Dyson Airwrap™ Origin multi-styler is engineered for different hair types, lengths, and styles. It utilizes the Coanda effect, a phenomenon where a jet of fluid attaches itself to a nearby surface and remains attached even when the surface curves away from the initial jet direction, to style hair without extreme heat damage. This manual provides essential information for setting up, operating, and maintaining your device.



Image: The Dyson Airwrap Origin multi-styler with its main body, Coanda smoothing dryer, 1.2-inch Airwrap barrel, and round volumizing brush.

KEY FEATURES

- **Coanda Airflow:** Styles hair using air, not extreme heat, to prevent damage.
- **Multi-functional Attachments:** Includes tools for drying, smoothing, curling, and volumizing.
- **Intelligent Heat Control:** Measures airflow temperature over 40 times a second to prevent heat damage.



Image: Diagram showing how the Coanda effect works, guiding hair around the barrel.



Image: Internal view of the Dyson digital motor V9, highlighting its powerful airflow.

SETUP

Unboxing and Initial Inspection

Upon opening the Dyson Airwrap™ Origin packaging, ensure all components are present and undamaged. The box typically includes the main styling wand, Coanda smoothing dryer, 1.2-inch Airwrap™ barrel, and round volumizing brush.

In the box



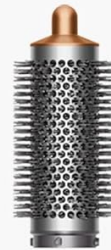
Main body



1.2 inch Airwrap™ long barrel



Coanda smoothing dryer



Round volumizing brush

Image: All the components of the Dyson Airwrap Origin multi-styler laid out, including the main body and its three attachments.

Attaching Accessories

To attach an accessory, align the attachment with the main wand and push it firmly until it clicks into place. To remove, pull down the release switch located on the main wand and gently pull the attachment off.

Power Connection

Plug the device into a suitable electrical outlet. The power cord is designed for flexibility and ease of use. Ensure the outlet voltage matches the device's requirements.



Image: Close-up of the main wand's controls, showing power, heat, and airflow settings.

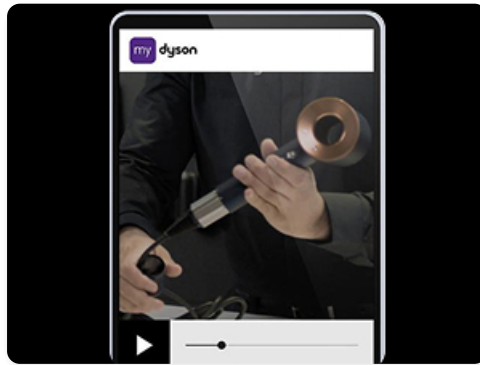


Image: A smartphone screen displaying the Dyson app, indicating potential digital integration for product support or features.

OPERATING INSTRUCTIONS

For optimal results, start with towel-dried hair. Hair should be damp, not dripping wet, to allow the Coanda effect to work effectively for styling and drying simultaneously.

General Controls

- **Power Button:** Press to turn the device on or off.
- **Airflow Speed:** Use the top slider to adjust airflow speed (three settings).
- **Temperature Control:** Use the bottom slider to adjust heat (three settings).
- **Cold Shot:** Press and hold the cold shot button to set your style with cool air.

Using the Coanda Smoothing Dryer

This multi-functional attachment is designed to quickly pre-dry hair and smooth flyaways. Attach the dryer, select high speed and high heat. Use it to dry hair until it's about 80% dry, then switch to smoothing mode by rotating the tip to hide flyaways for a sleek finish.



Image: A model demonstrating the use of the Coanda smoothing dryer attachment.

Using the 1.2-inch Airwrap™ Barrel

The Airwrap™ barrel creates voluminous curls and waves. It uses the Coanda effect to attract and wrap hair around the barrel. Ensure you select the correct airflow direction (indicated by arrows on the barrel) for curling away from your face on each side. Hold the hair section near the barrel, and the air will automatically wrap the hair. Hold until dry, then use the cold shot to set the curl before releasing.



Image: A model demonstrating the use of the 1.2-inch Airwrap barrel attachment for curling hair.

Video: Official Dyson tutorial on achieving a Retro Blowout using the Airwrap. This video demonstrates the steps for creating voluminous, classic curls.

Video: Official Dyson tutorial on creating Mermaid Waves with the Airwrap. This video guides users through the process of achieving soft, flowing waves.

Using the Round Volumizing Brush

This brush is designed to add body and shape to your hair as it dries. Use it to lift hair at the roots and create volume. Roll the brush through sections of hair, directing airflow for desired shape.



Sleek side part

Coanda smoothing dryer
Round volumizing brush

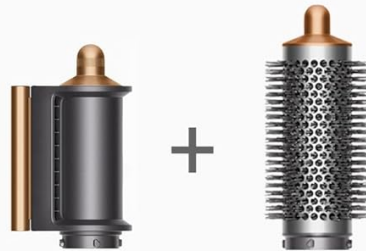


Image: A model showcasing a sleek side part hairstyle, demonstrating the smoothing and volumizing capabilities of the Airwrap.



Mermaid waves

Coanda smoothing dryer
1.2 inch Airwrap™ long barrel



Image: A model showcasing mermaid waves, illustrating the versatile styling options of the Airwrap.

MAINTENANCE

Cleaning the Filter

Regularly clean the filter cage at the bottom of the main wand to maintain optimal performance. Twist and pull down the filter cage, then use the provided filter cleaning brush to remove any hair or dust. Wash the filter cage under warm running water if necessary, ensuring it is completely dry before reattaching.

Cleaning Attachments

Wipe down all attachments with a soft, damp cloth after each use. For stubborn residue, a mild soap solution can be used. Ensure attachments are completely dry before storing.

Storage

Store your Dyson Airwrap™ Origin and its attachments in a dry, safe place, ideally in the provided storage case, to protect them from dust and damage.

TROUBLESHOOTING

Problem	Possible Cause	Solution
Device not turning on	No power, loose connection	Check power outlet, ensure plug is fully inserted.
Weak airflow or overheating	Blocked filter	Clean the filter cage as per maintenance instructions.
Hair not wrapping around barrel	Hair too wet/dry, incorrect section size, wrong airflow direction	Ensure hair is damp, use smaller sections, check airflow direction.
Attachments not staying on	Attachment not fully clicked in, worn mechanism	Push firmly until it clicks. If issue persists, contact support.

SPECIFICATIONS

- **Model Number:** 475606-01
- **Product Dimensions:** 1.6 x 1.9 x 10.7 inches
- **Weight:** 4.1 Pounds
- **Wattage:** 1300 watts
- **Power Source:** Corded Electric
- **Color:** Nickel/Copper
- **Material:** Aluminum, Ceramic, Polycarbonate
- **UPC:** 885609032528, 885609040158

WARRANTY AND SUPPORT

Your Dyson Airwrap™ Origin comes with a manufacturer's warranty. Please refer to the warranty card included in your packaging for specific terms and conditions. For technical support, troubleshooting assistance, or to inquire about replacement parts, please visit the official Dyson website or contact their customer service line. Keep your proof of purchase for warranty claims.