



Manuals.plus /

› Lian Li /

› Lian Li UNI Fan TL Wireless 120-Triple Pack Instruction Manual

Lian Li 12TL1W3W

Lian Li UNI Fan TL Wireless 120-Triple Pack Instruction Manual

INTRODUCTION

This manual provides detailed instructions for the installation, operation, and maintenance of your Lian Li UNI Fan TL Wireless 120-Triple Pack. Please read this guide thoroughly before use to ensure optimal performance and longevity of your product.

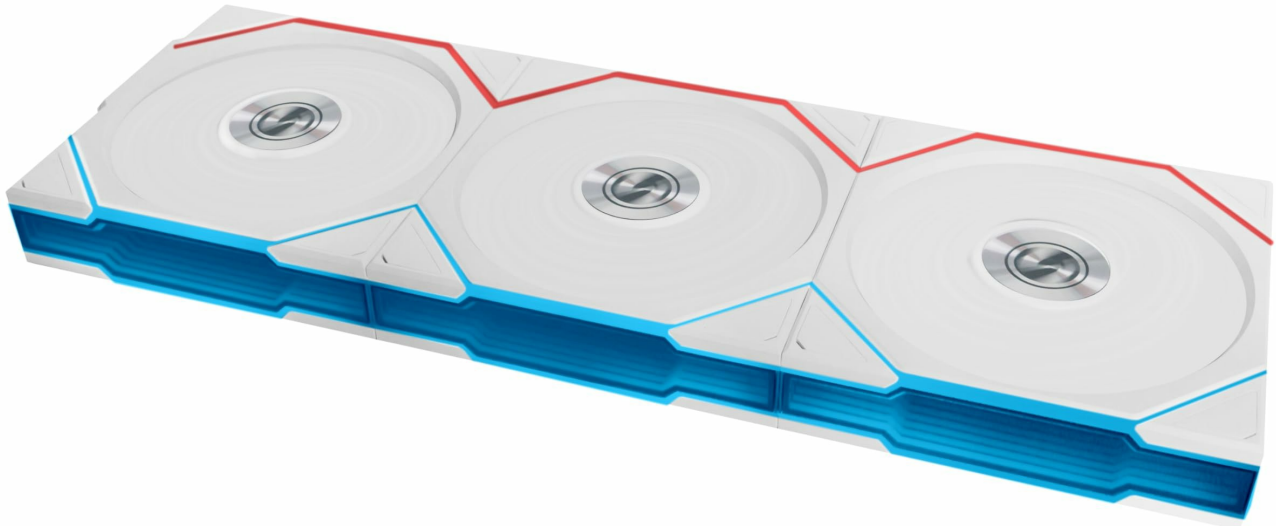


Image: The Lian Li UNI Fan TL Wireless 120-Triple Pack, showcasing three white fans with ARGB lighting.

PRODUCT FEATURES

- **Wireless Controller:** The included controller is essential for operating the Uni Fan wireless version. The 3-Pack comes with a controller and a PWM 1-to-3 cable for convenient connectivity.
- **2.4 GHz Wireless Control:** Advanced 2.4 GHz wireless technology eliminates cable clutter, allowing seamless management of fan speed, RGB lighting, and LCD display (for LCD models).
- **Customizable RGB and Dual Zone Lighting Visuals:** Bring your setup to life with customizable RGB lighting. UNI FAN TL LCD WIRELESS supports MP4, GIF, JPG, and PNG formats for vibrant colors and personalized displays.
- **Simplified Installation & Cable Management:** L-Wireless Sync technology simplifies installation by eliminating traditional 5V ARGB and PWM headers, leading to cleaner cable management.
- **L-Connect 3 Control Software:** Gain complete control of your fans with L-Connect 3 software. Easily customize fan settings, RGB presets, and LCD content for tailored aesthetics and optimal performance. Fan Size: 120x124.5x28mm.

PACKAGE CONTENTS

The Lian Li UNI Fan TL Wireless 120-Triple Pack includes the following components:

- Three (3) UNI Fan TL Wireless 120mm Fans
- One (1) Receiver
- One (1) Wireless Controller
- One (1) 1-to-3 SATA Power Cable

SETUP AND INSTALLATION

Follow these steps to properly install your Lian Li UNI Fan TL Wireless fans:

1. Connecting the Wireless Controller

The wireless controller is crucial for managing your fans. It connects to your motherboard via a USB 2.0 header and a PWM header for power. If your motherboard lacks sufficient USB 2.0 headers, a USB splitter cable can be used.



Image: Diagram illustrating the wireless transmission and easy installation process, showing the L-Wireless controller and its connection points.

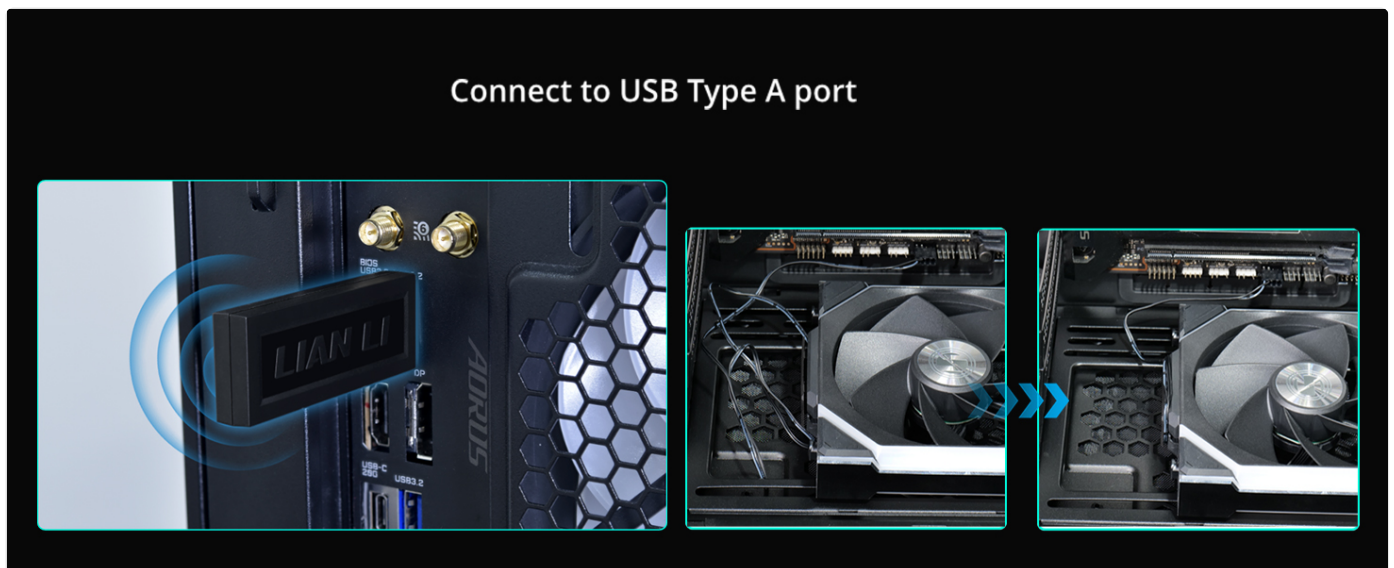


Image: Close-up of the L-Wireless controller connecting to a USB Type-A port on the motherboard, highlighting the simplified wiring.

2. Fan Connection and Daisy-Chain Design

The UNI Fan TL Wireless fans feature a daisy-chain design, allowing multiple fans to connect directly to each other, reducing cable clutter. The included 1-to-3 SATA power cable provides power to the fan groups.



Image: Three white Lian Li UNI Fans connected in a daisy chain, illustrating the interlocking design.

WIRELESS TRANSMISSION, EASY INSTALLATION

By adopting 2.4GHz wireless technology, the UNI FAN TL Wireless Series eliminates the need for traditional hub connections, significantly simplifying the installation process and enhancing user experience.

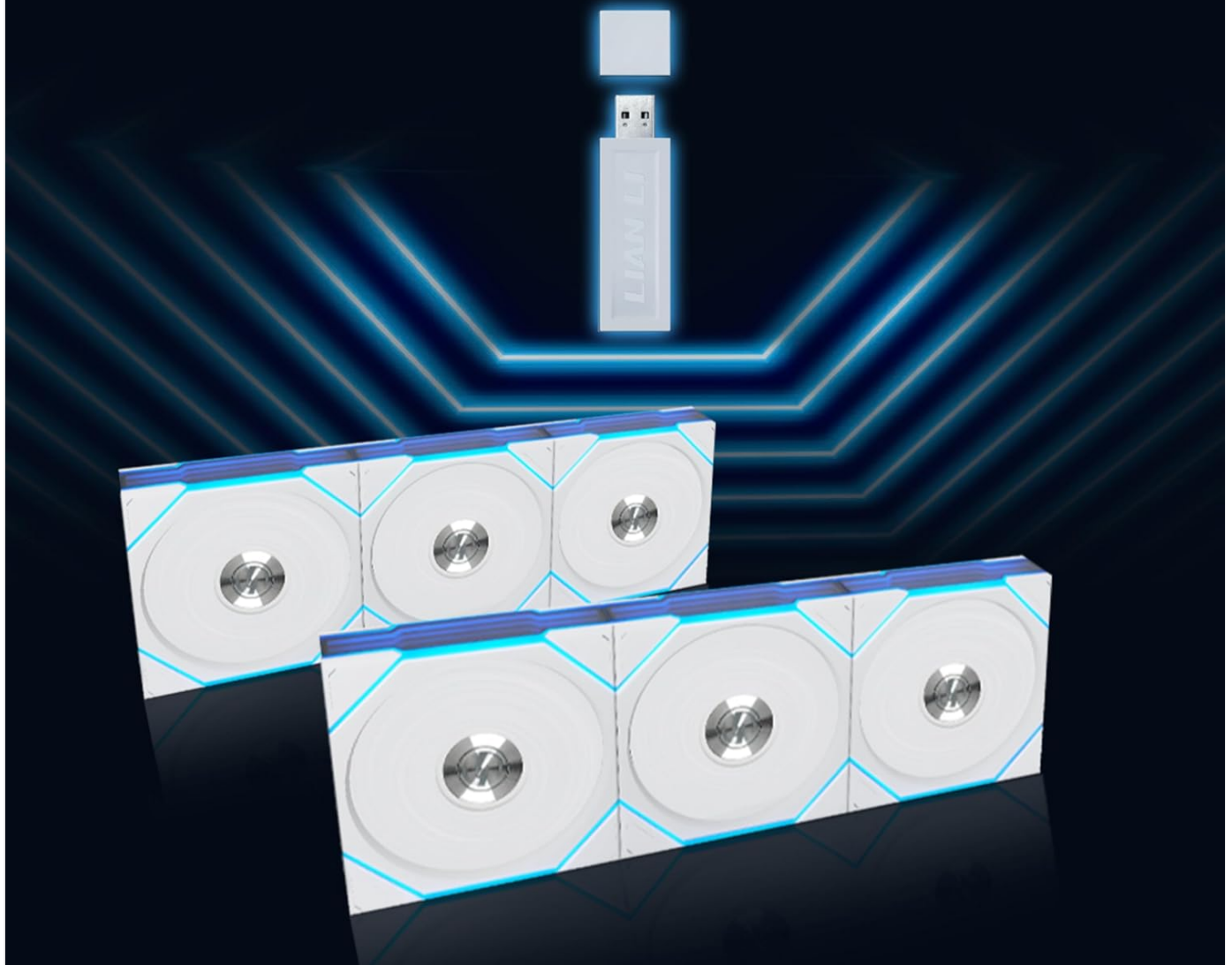


Image: A single Lian Li UNI Fan TL Wireless 120, highlighting its ARGB lighting and sleek design.

AVAILABLE IN TWO VARIATIONS TWO ORIENTATIONS / TWO COLORS / TWO SIZES



BLACK

WHITE

Elevate the PC setup with the UNI FAN TL wireless LCD and non-LCD version. Two sizes: 120mm and 140mm fans are available in black and white, with options for standard and reverse blade configurations meeting all kinds of needs.

Note: The fan is slightly wider and thicker than standard 120mm fans at 120x124x28mm, and 140mm fans at 140x142x28mm. Please ensure your PC chassis is compatible.

Note: TL 140mm fans are only available in single packs and require a compatible controller, which must be purchased separately.

Image: A close-up of the Lian Li UNI Fan TL Wireless 120, showing the infinity mirror effect on the fan frame.

SOPHISTICATED CONTINUOUS RGB LIGHTING

Each UNI FAN TL Wireless series fan has 26 LEDs with a wide infinity mirror on the 2 sides of the fan frame that wraps around the edges of the anti-vibration pad.



Image: Lian Li UNI Fan TL Wireless 120 fans installed in a PC case, demonstrating their aesthetic integration.



LIAN LI Edge Hub

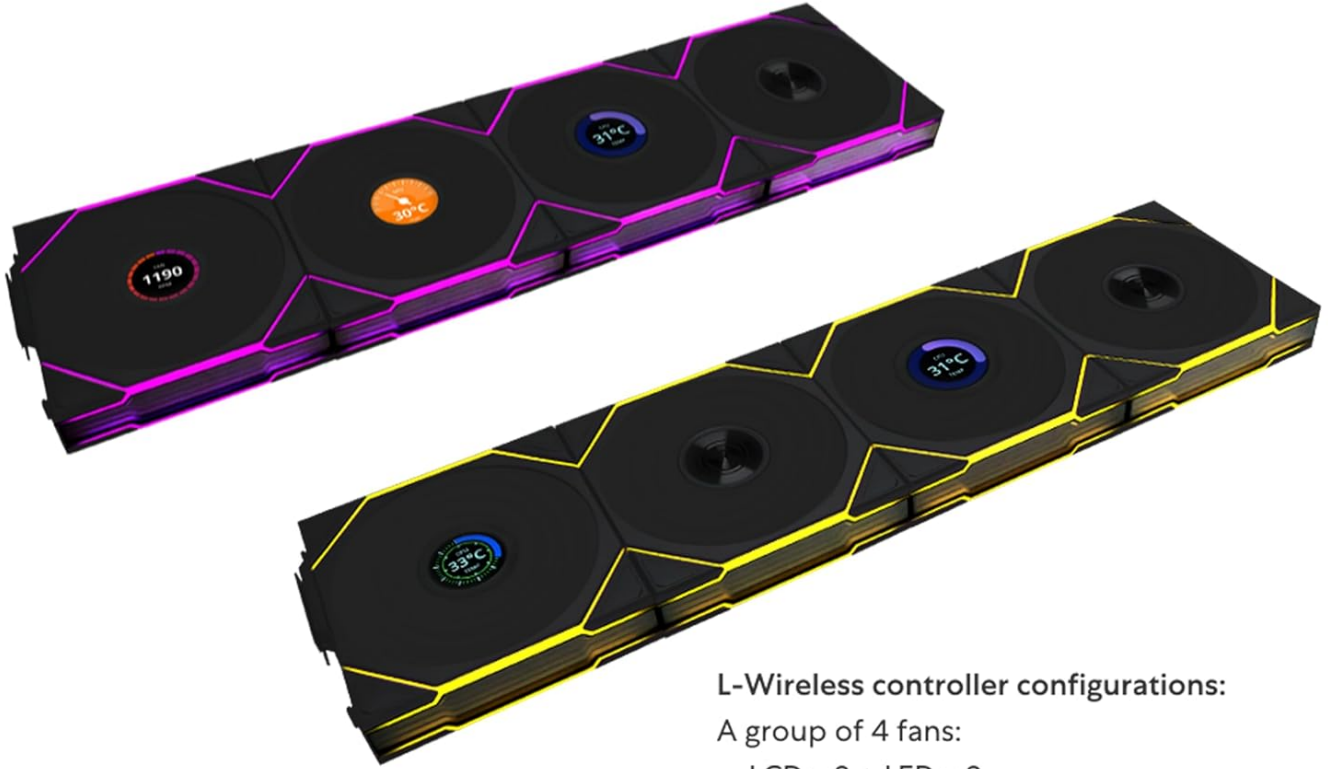
Note: The Edge hub will need to connect to additional PCIe 8-PIN port or Edge Gold PSU for power up.



Image: The Lian Li UNI Fan TL Wireless 120 displaying customizable lighting effects.

PERSONALIZED REMIX, STYLE ON DISPLAY

UNI FAN TL Wireless and TL LCD wireless now can be mix-matched into a group, offering versatile configurations and empowering creativity.



L-Wireless controller configurations:

A group of 4 fans:

LCD x 2 + LED x 2

LCD x 3 + LED x 1

LED x 4

A group of 3 fans:

LCD x 3

Image: Multiple Lian Li UNI Fan TL Wireless 120 fans showcasing different ARGB lighting patterns.

SEAMLESS SOFTWARE

Able to set different fan speeds for each fan cluster to optimize different scenarios of use providing flexibility for radiator or case fan needs with L-Connect 3.

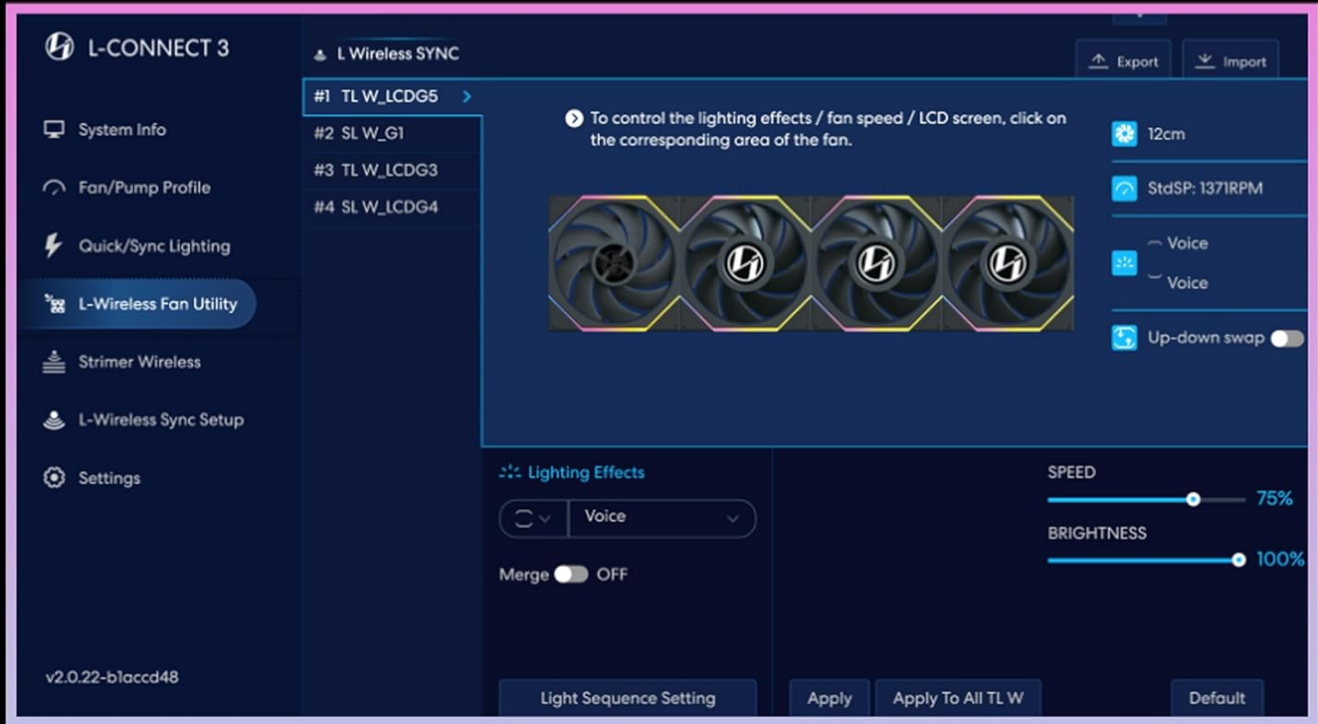


Image: A close-up of the Lian Li UNI Fan TL Wireless 120 fans installed in a PC build, showing their integration with other components.



Image: The Lian Li UNI Fan TL Wireless 120 fans alongside a PC case screen, demonstrating a complete aesthetic setup.



Image: The Lian Li UNI Fan TL Wireless 120 fans integrated into a Lancool 217 INF PC case.



Image: The Lian Li UNI Fan TL Wireless 120 fans installed in an O11 Vision Compact PC case.



Image: The Lian Li UNI Fan TL Wireless 120 fans showcased within an O11 Dynamic Mini V2 PC case.



Image: A single pack of the Lian Li UNI Fan TL Wireless 120 Reverse Blade fan.

Installation Videos

Your browser does not support the video tag.

Video: "PC Crazy: Lian Li UNI FAN TL & TL LCD WIRELESS-Part1" - This video provides a detailed overview of the Lian Li UNI Fan TL and TL LCD Wireless fans, including unboxing and initial setup considerations.

Your browser does not support the video tag.

Video: "PC Crazy: Lian Li UNI FAN TL & TL LCD WIRELESS-Part2" - This video continues the detailed review of the Lian Li UNI Fan TL and TL LCD Wireless fans, focusing on advanced features and installation tips.

Your browser does not support the video tag.

Video: "PC Crazy - Lian Li A3 PC Case with TL Wireless Fans" - This video demonstrates the installation and functionality of TL Wireless Fans within a Lian Li A3 PC case.

Your browser does not support the video tag.

Video: "O11D Mini V2 & TL LCD W & Strimer W & SL INF W & HS II Video" - This video showcases a complete PC build featuring the O11D Mini V2 case, TL LCD Wireless fans, Strimer Wireless cables, SL INF Wireless fans, and HydroShift II components.

OPERATING INSTRUCTIONS

Manage your UNI Fan TL Wireless fans using the L-Connect 3 software:

- **Fan Speed Control:** Adjust fan speeds for individual fan clusters to optimize cooling performance for various scenarios (e.g., radiator or case fan needs).
- **RGB Customization:** Select from a variety of RGB presets and customize lighting effects to match your PC's aesthetic.
- **LCD Content (for TL LCD models):** For TL LCD models, customize the display with MP4 videos, GIFs, JPGs, PNGs, or real-time system information like CPU/GPU temperature and load, and fan RPM.
- **L-Wireless Sync Setup:** The software automatically recognizes wireless devices. Click the link icon to bind devices (turns blue when successful) or click again to unbind. An option to bind all recognized devices at once is also available. The device finder feature lights up the corresponding device yellow for 5 seconds to confirm its location.

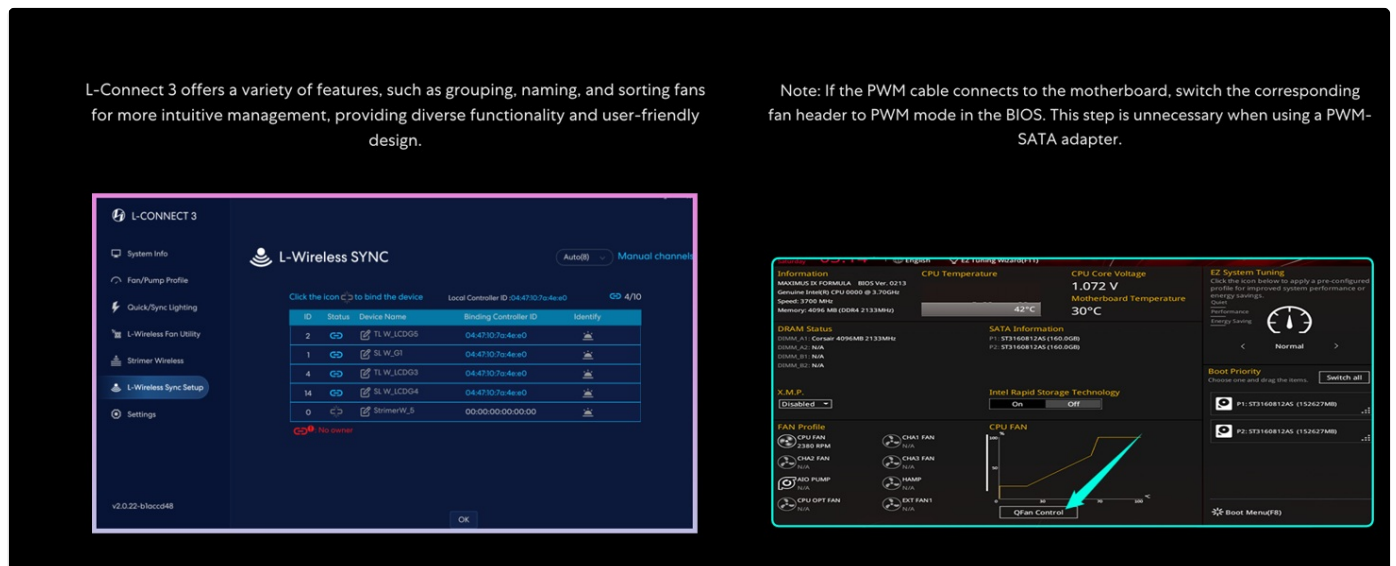


Image: Screenshot of the L-Connect 3 software interface, showing options for fan speed, RGB lighting effects, and LCD screen setup.



Image: Another view of the L-Connect 3 software, displaying fan profiles, system information, and advanced settings.

The UNI FAN TL LCD Wireless carries forward the legacy of the world's first LCD-equipped fan. It features a 1.6" circular LCD screen with 60Hz refresh rate (upgraded from 30Hz) that integrates seamlessly with LIAN LI's L-Connect 3 software, offering exceptional customizability.

- 1.6" LCD
- 60HZ REFRESH RATE
- 400X400 RESOLUTION
- 500 NITS BRIGHTNESS
- SRGB 24-BIT
- IPS TYPE DISPLAY



Monitor CPU and GPU temperature and load with new built-in animated hardware sensors displayed directly on the screen. For clusters of 3 LCD fans, multiple data points can be displayed simultaneously.

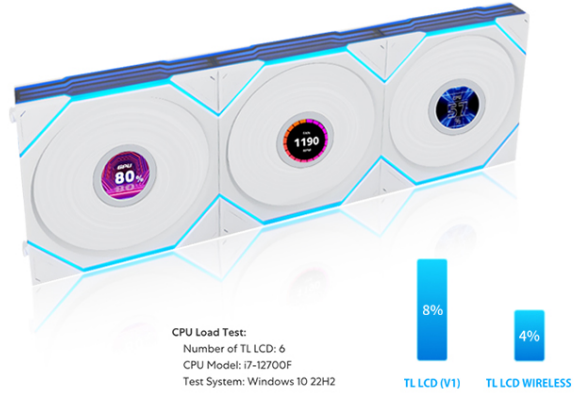


Image: The LCD screen of a Lian Li UNI Fan TL LCD Wireless fan displaying CPU temperature, GPU temperature, and fan RPM.

SPECIFICATIONS

Attribute	Value
Brand	Lian Li
Model	12TL1W3W
Power Connector Type	SATA/Molex
Voltage	5 Volts (DC)
Wattage	5 watts
Cooling Method	Air
Compatible Devices	Desktop
Noise Level	33 Decibels
Material	Liquid Crystal Polymer, Electronic Components
Maximum Rotational Speed	2600 RPM
Item Weight	450 Grams
Unit Count	1.0 Count

COMBINATION OF PERFORMANCE AND AESTHETICS

The UNI FAN TL Wireless uses LCP material for fan blades, a copper center shaft, and FDB bearings with 9 tightly aligned blades (0.65mm gap), ensuring a striking look without compromising on performance.

Model	Airflow	Static Pressure	Noise	Speed
TL Wireless 120	90.1 CFM	3.97 mmH2O	33 dBA	0,200-2600 RPM
TL Wireless 120 (Reverse Blade)	83.4 CFM	2.66 mmH2O	34 dBA	0,200-2300 RPM
TL LCD Wireless 120	62 CFM	2.9 mmH2O	27 dBA	0,350-1900 RPM
TL LCD Wireless 120 (Reverse Blade)	54.3 CFM	2.83 mmH2O	31 dBA	0,350-1900 RPM
TL Wireless 140	103.9 CFM	2.34 mmH2O	29 dBA	0,200-1800 RPM
TL Wireless 140 (Reverse Blade)	103.9 CFM	2.27 mmH2O	31 dBA	0,200-1800 RPM
TL LCD Wireless 140	68.1 CFM	3.5 mmH2O	28.5 dBA	0,400-1600 RPM
TL LCD Wireless 140 (Reverse Blade)	68.1 CFM	3.1 mmH2O	29.4 dBA	0,350-1600 RPM
P28 120	92 CFM	4.79 mmH2O	32.1 dBA	300-2600 RPM

Image: A chart detailing the performance specifications (airflow, static pressure, noise, speed) for various Lian Li UNI Fan TL models.

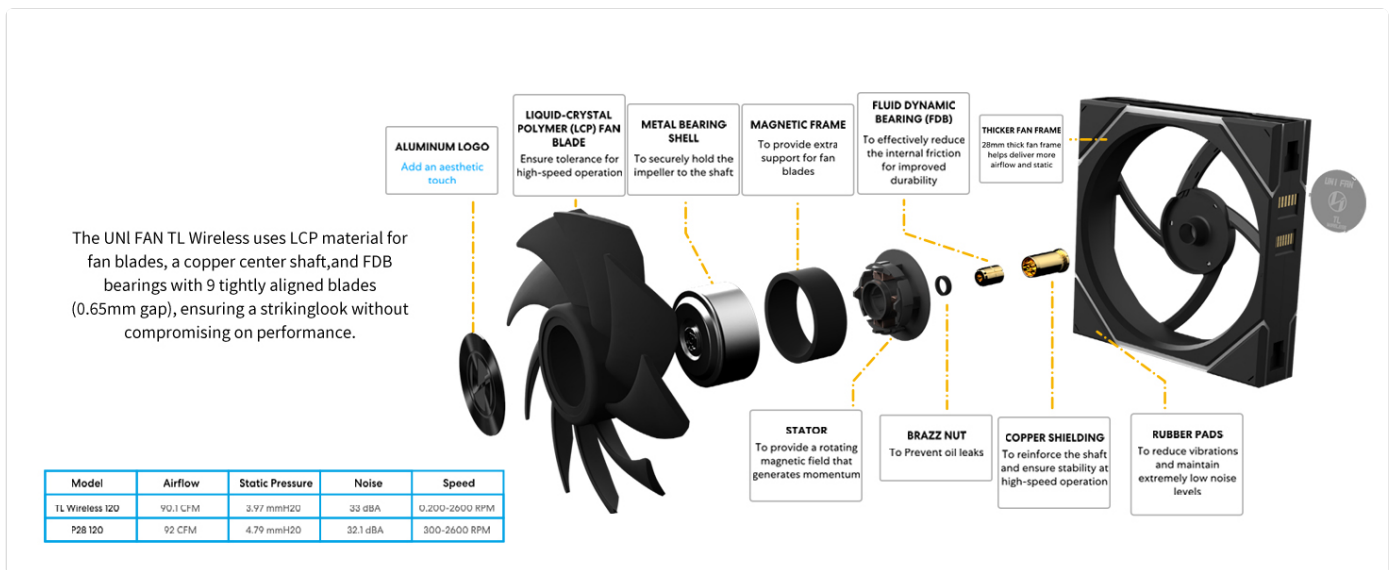


Image: An exploded view diagram of the Lian Li UNI Fan TL, highlighting its components and materials like Liquid Crystal Polymer blades and Fluid Dynamic Bearings.

MAINTENANCE

To ensure the longevity and optimal performance of your fans, regular maintenance is recommended:

- **Cleaning:** Periodically clean the fan blades and frame to prevent dust buildup, which can impede airflow and increase noise. Use a soft brush or compressed air.
- **Cable Management:** Ensure all cables are neatly routed and secured to prevent interference with moving parts or airflow.
- **Software Updates:** Keep your L-Connect 3 software updated to the latest version to benefit from performance improvements and new features.

TROUBLESHOOTING

If you encounter issues with your UNI Fan TL Wireless fans, consider the following:

- **Connectivity Issues:** If fans are not detected or responding, ensure the wireless controller is properly connected to both the USB 2.0 header and the PWM header. Check the L-Connect 3 software for binding status.

- **Lighting/Speed Control Problems:** If you cannot change colors or fan speed via L-Connect 3, try uninstalling and reinstalling the software. Ensure the PWM cable is connected to the motherboard and the corresponding fan header is set to PWM mode in the BIOS.
- **Insufficient Power:** If using multiple fans, ensure the SATA power cable is connected for stable power delivery, especially for LCD versions.

WARRANTY AND SUPPORT

This product comes with **No Warranty** as per the manufacturer's specifications.

For further support or inquiries, please visit the [Official Lian Li Store](#).