

**Manuals+**

[Q & A](#) | [Deep Search](#) | [Upload](#)

[manuals.plus](#) /

› [Waterdrop](#) /

› [Waterdrop 0 TDS Glass Rechargeable Water Filter Dispenser \(Model WD-ED10TW\) User Manual](#)

## Waterdrop WD-ED10TW

# Waterdrop 0 TDS Glass Rechargeable Water Filter Dispenser (Model WD-ED10TW) User Manual

Model: WD-ED10TW | Brand: Waterdrop



Image: Waterdrop 0 TDS Glass Rechargeable Water Filter Dispenser, showing its sleek design and a glass being filled with filtered water.

## 1. PRODUCT OVERVIEW

The Waterdrop 0 TDS Glass Rechargeable Water Filter Dispenser, Model WD-ED10TW, is designed to provide purified water with advanced 4-stage filtration. This countertop system reduces various contaminants and features a convenient electric dispensing mechanism.

- **0 TDS Purity:** Achieves near-zero Total Dissolved Solids (TDS) through a comprehensive 4-stage filtration process.
- **Fast Dispensing:** Delivers water instantly with a 1-second touch operation, filling an 8oz cup in approximately 20 seconds.
- **Durable Glass Construction:** Made from lead-free, high-quality, shatterproof glass for safety and durability.

- **Rechargeable Battery:** Features an inbuilt battery providing up to 30 days of standby time on a single charge.
- **Large Capacity:** Offers a 22-cup capacity, suitable for family use.

## Super Filtration for 0 TDS\* Water

Pure, refreshing water  
with every sip

\*You will need to prepare the TDS testing meter separately.

\*Tested with source water at 500ppm at the start of filter life. Actual TDS reduction depends on local water quality.

\*Claim of reduction verified by a third party laboratory testing

Image: Illustration of the 0 TDS filtration capability, showing a TDS meter reading 0000 ppm, emphasizing the purity of the filtered water.

## 2. SETUP AND INITIAL USE

1. **Unpacking:** Carefully remove all components from the packaging. Ensure all parts are present: the dispenser unit, filter, and USB Type-C charging cable.
2. **Initial Cleaning:** Wash the glass reservoir and lid with mild soap and water. Rinse thoroughly. Do not immerse the electronic pumping unit in water.
3. **Charging the Device:** Before first use, fully charge the dispenser. Connect the provided USB Type-C cable to the charging port on the pumping unit and to a compatible USB power adapter (not included). The power indicator light will show charging status.
4. **Installing the Filter:**
  - Take out the water pumping unit from the glass reservoir.
  - Turn counter-clockwise to remove any old or placeholder filter (if present).
  - Screw the new filter clockwise into the designated slot on the pumping unit until secure.
  - For better filtration, activate the filter by flushing it. When using a new filter for the first time or after replacing it, discard the first tank of filtered water and do not drink it.
5. **Filling the Reservoir:** Place the pumping unit back into the glass reservoir. Remove the top lid for easy water filling. Fill the reservoir with tap water.

## Upgraded Convenience, Easy to Use

·Removable top lid  
for easy water filling



·Non-slip Silicone Base Cover



Image: Close-up view illustrating the removable top lid for easy water filling and the non-slip silicone base cover for stability.

### 3. OPERATING INSTRUCTIONS

The Waterdrop dispenser is designed for simple, one-touch operation.

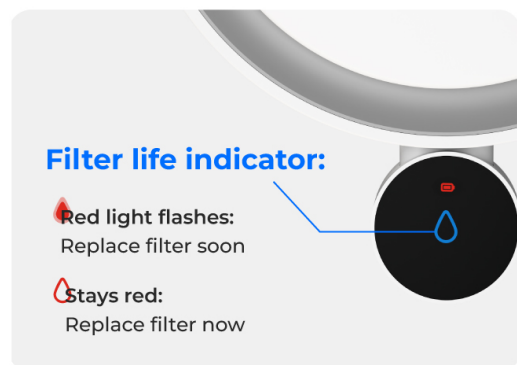
1. **Dispensing Water:** Gently touch the button on the dispensing unit. Water will begin to flow instantly.
2. **Stopping Water Flow:** Touch the button again to stop the water flow.
3. **Smart Indicators:** The dispenser features smart indicators to keep you informed:
  - **Power Indicator:**
    - Red light flashes: Indicates the device needs charging.
    - Green light stays on: Indicates charging is complete.
  - **Filter Life Indicator:**
    - Red light flashes: Reminds you to replace the filter soon.
    - Red light stays on: Indicates the filter needs immediate replacement.

### Smart Indicators for Easy Use



#### Power indicator

- Red light flashes:  
Charge the device now
- Stays green:  
Charging completed



#### Filter life indicator:

- Red light flashes:  
Replace filter soon
- Stays red:  
Replace filter now

Image: Diagram showing the power indicator and filter life indicator lights on the dispenser, explaining their

## 4. MAINTENANCE

### 4.1 Filter Replacement

It is recommended to replace the filter once a month, or when the filter life indicator signals replacement, or when the water taste begins to deteriorate.

1. **Step 1:** Take out the water pumping unit from the glass reservoir.
2. **Step 2:** Turn counter-clockwise to remove the used filter.
3. **Step 3:** Screw a new filter clockwise to the lock.
4. **Step 4:** Put the water pumping unit back into the system, and hold the filter reset key for 3 seconds to reset the filter indicator.

*Note: For optimal filtration, activate the new filter by flushing it. Discard the first tank of filtered water after installing a new filter.*

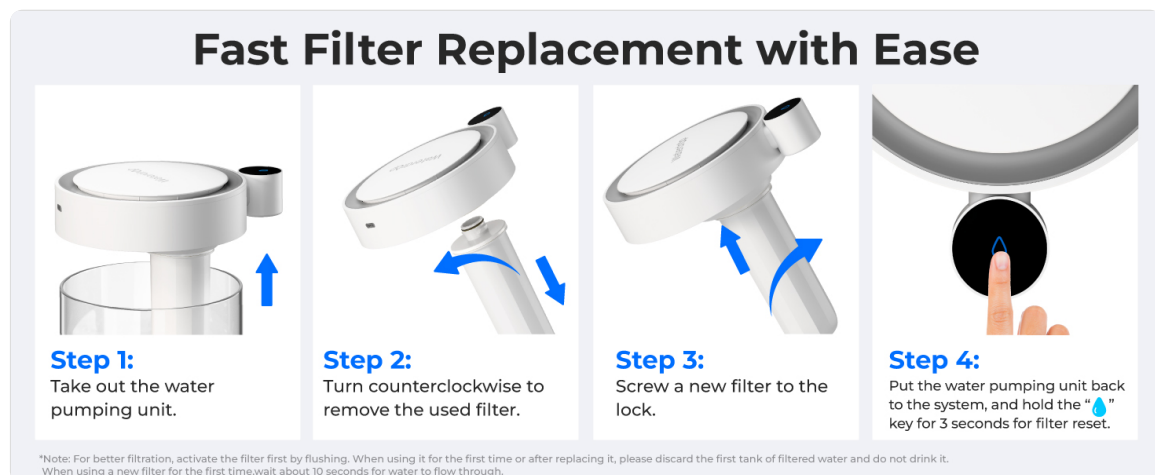


Image: Four-step visual guide demonstrating how to replace the water filter, including removing the pumping unit, unscrewing the old filter, screwing in the new filter, and resetting the filter indicator.

### 4.2 Charging the Battery

The inbuilt rechargeable battery provides up to 30 days of standby time on a single full charge. When the power indicator flashes red, recharge the device.

- Connect the USB Type-C cable to the charging port on the pumping unit.
- Connect the other end of the cable to a compatible USB power adapter (not included).
- The power indicator will show charging status (flashing red for low battery, solid green for fully charged).

30 DAYS

Waterdrop

Long Lasting, Always Ready

Take it **anywhere, anytime** you want

30 days standby

On a single charge

1,500 mAh

Battery capacity

Image: Graphic highlighting the 30-day standby time and 1500 mAh battery capacity, with illustrations of the dispenser being used in various locations like an RV, living room, and office.

## 5. TROUBLESHOOTING

Problem	Possible Cause	Solution
Dispenser not turning on or dispensing water.	Low battery.	Charge the device using the USB Type-C cable until the power indicator shows a solid green light.
Water flow is slow.	Filter is clogged or nearing end of life.	Replace the filter. Ensure the new filter is properly installed and flushed.
Filter indicator not working or showing incorrect status.	Filter not reset after replacement, or a sensor issue.	After replacing the filter, hold the filter reset key for 3 seconds. If the issue persists, contact customer support.
Water tastes unusual after filter replacement.	New filter not properly flushed.	Discard the first tank of filtered water after installing a new filter.

## 6. SPECIFICATIONS

- **Model Number:** WD-ED10TW
- **Brand:** Waterdrop
- **Filtration Stages:** 4-Stage
- **Material:** Lead-Free Glass
- **Capacity:** 22-Cup (approximately 5.2 Liters)
- **Item Weight:** 8.07 pounds
- **Product Dimensions:** 12.5 x 10.26 x 13.62 inches (L x W x H)

- **Power Source:** Battery Powered
- **Battery Type:** 1 Lithium Ion battery (included)
- **Battery Capacity:** 1500 mAh (approx. 30 days standby)
- **Installation Method:** Countertop

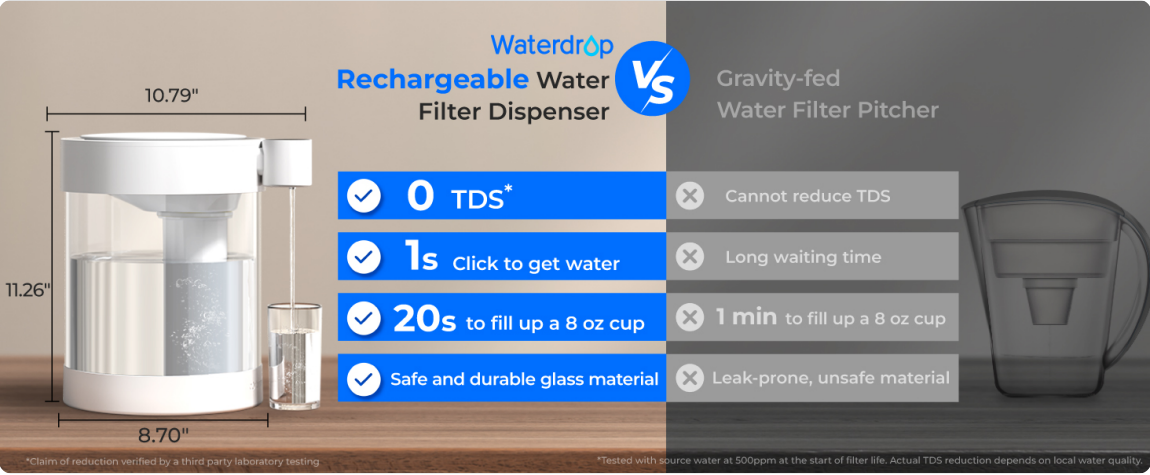


Image: Diagram illustrating the dimensions of the Waterdrop Rechargeable Water Filter Dispenser and a comparison of its features against a gravity-fed filter pitcher.

7. WARRANTY AND SUPPORT



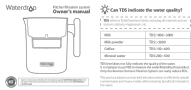
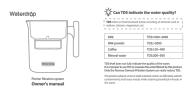
For warranty information or customer support, please refer to the documentation included with your product or visit the official Waterdrop website. Customer reviews indicate responsive and helpful support from Waterdrop.

**Manufacturer:** Waterdrop  
**Part Number:** WD-ED10TW

© 2024 Waterdrop. All rights reserved.

Related Documents - WD-ED10TW

	<p><a href="#">Waterdrop Pitcher Filtration System Owner's Manual</a></p> <p>Owner's manual for the Waterdrop pitcher filtration system, detailing its features, usage instructions, filter replacement, and technical specifications. Learn about TDS and water quality, system components, care and safety, and troubleshooting.</p>
	<p><a href="#">Waterdrop Pitcher Filtration System Owner's Manual</a></p> <p>Owner's manual for the Waterdrop pitcher filtration system, covering setup, usage, filter replacement, and troubleshooting. Includes information on TDS and water quality.</p>

	<p><a href="#">Waterdrop WD-TSA-10 Triple-Stage Undersink Water Filtration System Installation Guide</a></p> <p>Detailed installation instructions for the Waterdrop WD-TSA-10 Triple-Stage Undersink Water Filtration System, including specifications, precautions, step-by-step setup, filter replacement, FAQs, and warranty information.</p>
	<p><a href="#">Waterdrop WD-PF-01A Plus Filter Installation and Performance Guide</a></p> <p>Concise installation instructions, performance data, and troubleshooting for the Waterdrop WD-PF-01A Plus pitcher and dispenser replacement filter, certified by NSF International.</p>
	<p><a href="#">Waterdrop Pitcher Filtration System Owner's Manual</a></p> <p>Comprehensive owner's manual for the Waterdrop pitcher filtration system, detailing setup, usage, care, safety information, technical specifications, and troubleshooting. Learn how to maintain your water filter for optimal performance and water quality.</p>
	<p><a href="#">Waterdrop Water Filter Pitcher Owner's Manual</a></p> <p>This manual provides instructions for using and maintaining the Waterdrop Water Filter Pitcher, including setup, filter replacement, and troubleshooting. It also details the product's specifications and NSF certifications.</p>