

## Feasto TC2033

# Feasto Outdoor Grill Cart TC2033 Instruction Manual

Comprehensive guide for assembly, operation, and maintenance of your Feasto Outdoor Grill Cart.

## 1. INTRODUCTION

---

This manual provides essential instructions for the safe and efficient use of your Feasto Outdoor Grill Cart, Model TC2033. Please read all instructions carefully before assembly and operation. Keep this manual for future reference.

### Safety Information

#### WARNING:

- Ensure all parts are properly secured before use.
- Do not allow children to play on, with, or around the cart.
- Use caution when moving on uneven surfaces to prevent tipping.
- Do not exceed the weight capacity: 66 lbs on the main tabletop, 44 lbs on the lower shelf, and 33 lbs on the foldable side table.

## 2. SETUP AND ASSEMBLY

---

The Feasto Outdoor Grill Cart is designed for straightforward assembly. Please follow the steps below to ensure correct setup.

1. **Unpack Components:** Carefully remove all parts from the packaging. Verify that all components listed in the packing list are present and undamaged.
2. **Assemble Frame:** Attach the legs to the main tabletop frame using the provided hardware. Ensure all bolts are tightened securely.

3. **Install Lower Shelf:** Secure the lower shelf to the leg assembly.
4. **Attach Wheels:** Install the two casters on one side of the cart and the two stationary legs on the other side. Ensure they are firmly attached for stability and mobility.
5. **Mount Accessories:** Attach the garbage bag holder and paper towel holder to the designated locations on the cart.
6. **Inspect:** Before first use, double-check all connections and ensure the cart is stable and level.



Figure 1: Fully assembled Feasto Outdoor Grill Cart, showcasing its stainless steel countertop and overall structure.

### 3. OPERATING INSTRUCTIONS

---

Your Feasto Outdoor Grill Cart is designed to provide a versatile and convenient workspace for outdoor cooking and food preparation.

#### 3.1 Mobility and Placement

# Convenient to move with casters



Straight-way  
Casters

Figure 2: The cart features two casters for easy movement and two stationary legs for stability.

The cart is equipped with two casters and two stationary legs. To move the cart, lift the stationary leg side slightly and roll the cart using the casters. Once in the desired location, ensure the stationary legs are firmly on the ground for stability. Avoid moving the cart over very uneven terrain while loaded.

## 3.2 Workspace and Capacity

## Product Detailed Size

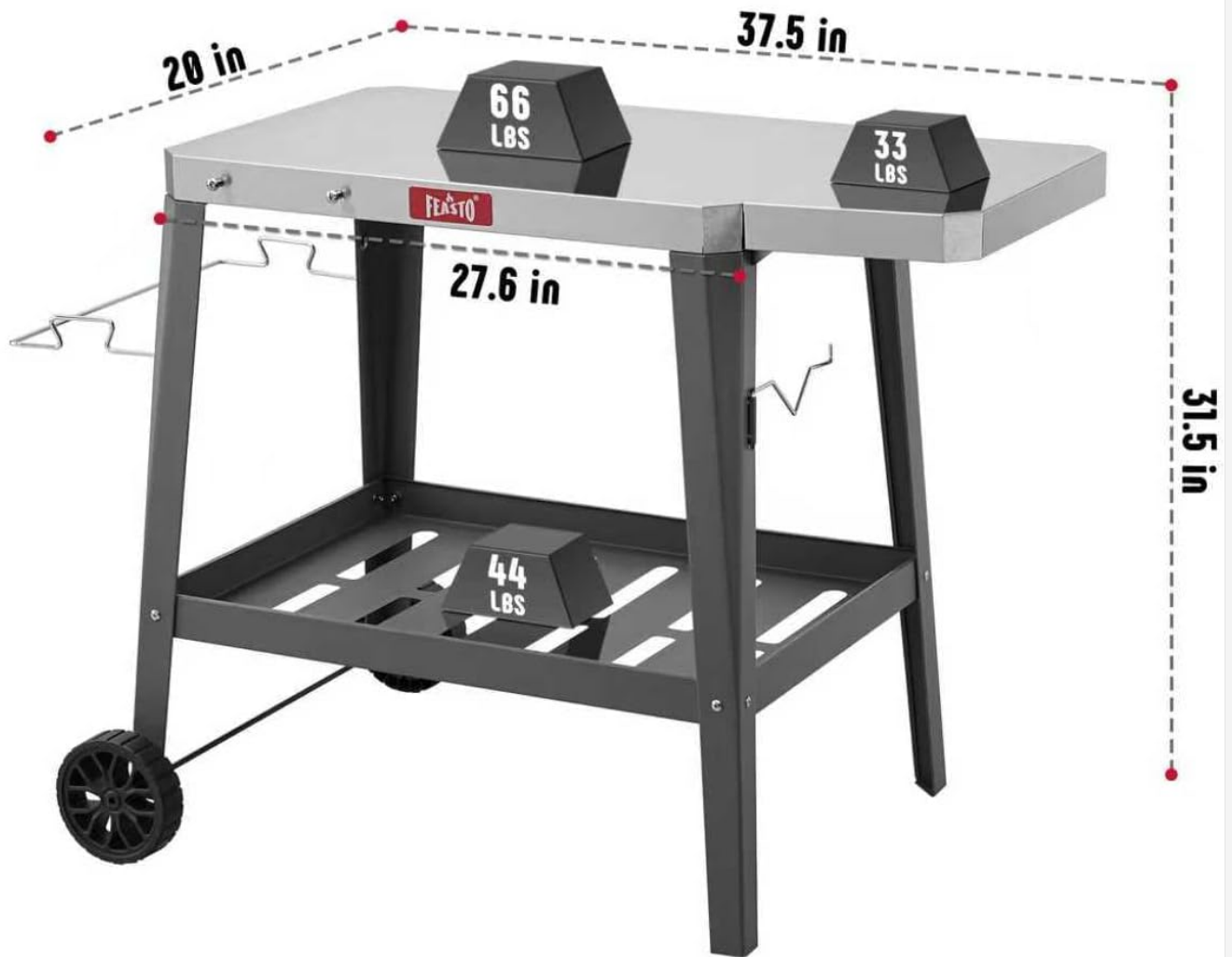


Figure 3: Main tabletop dimensions and load capacities for the cart's surfaces.

The main tabletop measures 37.5 x 20 x 31.5 inches and supports up to 66 lbs. The lower shelf can hold up to 44 lbs. These capacities are designed for typical outdoor cooking equipment and food items.

### 3.3 Foldable Extension Table

## User-friendly Design

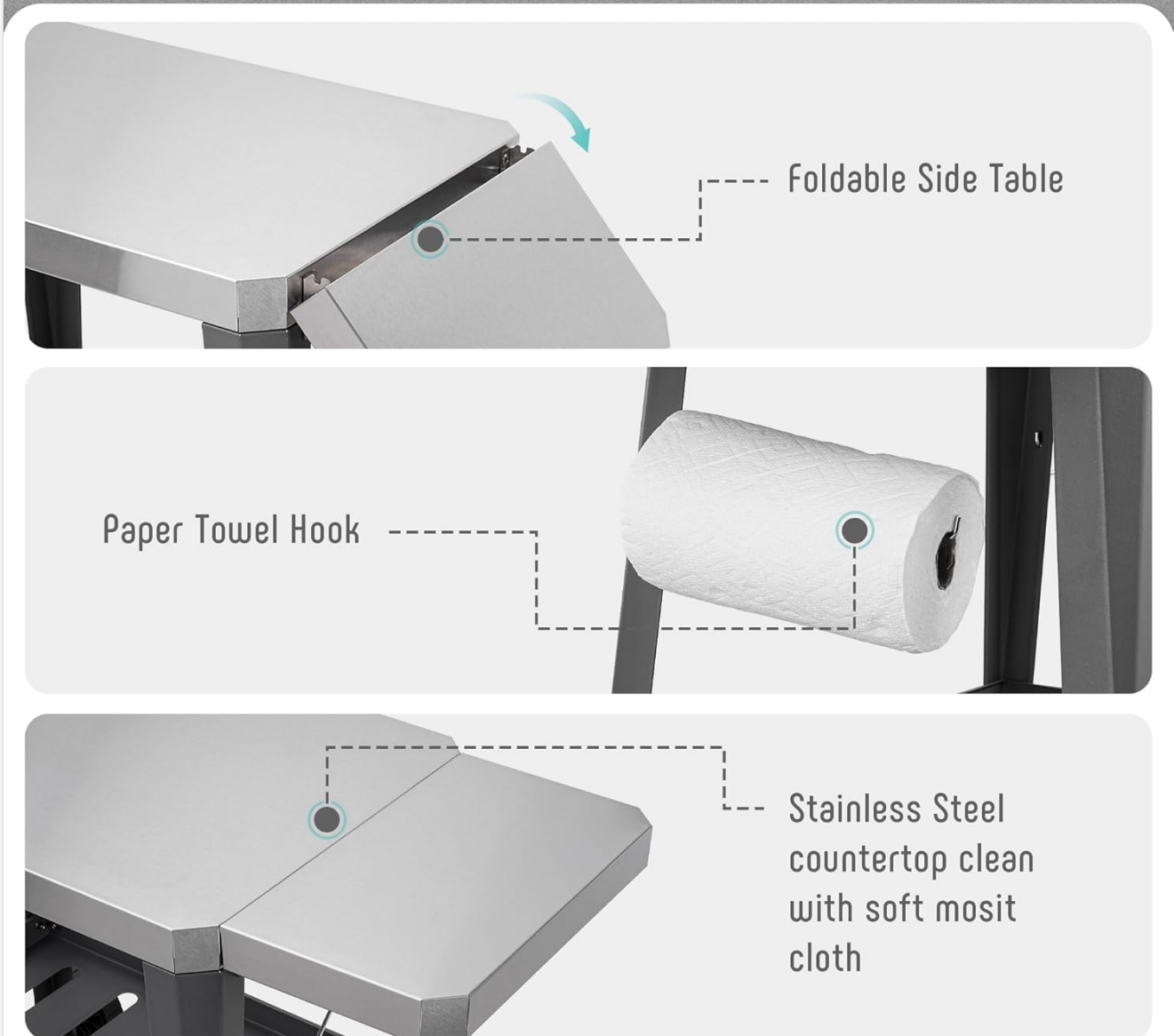


Figure 4: The foldable side table provides additional workspace when extended.

The cart features a foldable side table that provides an additional 33 lbs of capacity. To extend, carefully lift and pull out the side table until it locks into place. To fold, release the locking mechanism and gently push the table back into its stored position. This feature is ideal for temporary extra space during food preparation or serving.



Figure 5: Detailed view of the foldable side table's hinge and support mechanism.

### 3.4 Storage Features

- **Garbage Bag Holder:** Utilize the integrated holder for convenient waste disposal during cooking.
- **Paper Towel Holder:** A dedicated holder keeps paper towels easily accessible for quick clean-ups.
- **Lower Shelf:** The slatted lower shelf provides additional storage for cooking tools, ingredients, or beverages. It includes fences and weep holes to prevent items from slipping and to allow for water drainage.

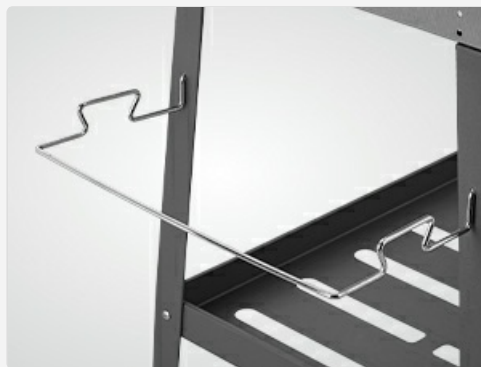


Figure 6: Integrated garbage bag holder for convenience during outdoor cooking.



Figure 7: Paper towel holder for easy access during cooking and cleaning.



## Stainless Steel Tabletop

The 37.5"D × 31.5"W tabletop provides an ideal space for food prep, both indoors and outdoors.

Figure 8: The lower shelf features fences to prevent items from falling and weep holes for drainage.

### 3.5 Versatile Use

The Feasto Grill Cart is suitable for various outdoor cooking appliances, including pizza ovens, BBQs, and camping stoves. Its robust design makes it ideal for use in your home, garden, or patio.



## Fences & Weep Holes

The fenced shelf and built-in leak holes effectively prevent slippage and water accumulation.

Figure 9: Examples of the cart's versatile use with different cooking appliances.

Your browser does not support the video tag.

Video 1: Demonstration of the Feasto Movable Outdoor Kitchen Unit, showcasing its features and versatility in an outdoor setting.

## 4. MAINTENANCE

Proper maintenance will ensure the longevity and optimal performance of your Feasto Outdoor Grill Cart.

## 4.1 Cleaning

The stainless steel countertop is designed for easy cleaning. Wipe spills and food residue immediately with a soft, damp cloth. For stubborn stains, use a mild detergent and rinse thoroughly. Avoid abrasive cleaners or scouring pads that could scratch the surface.



Figure 10: Cleaning the stainless steel countertop with a soft cloth.

## 4.2 General Care

- Regularly check all bolts and connections to ensure they remain tight.
- Store the cart in a dry, covered area when not in use, especially during adverse weather conditions, to protect the materials and extend its lifespan.
- If storing outdoors, consider using a protective cover.

## 5. TROUBLESHOOTING

This section addresses common issues you might encounter with your grill cart.

Problem	Possible Cause	Solution
Cart is unstable or wobbly.	Loose bolts or uneven surface.	Ensure all assembly bolts are tightened. Move the cart to a level surface.
Foldable side table does not extend or fold smoothly.	Obstruction in the hinge mechanism or manufacturing imperfection.	Check for any debris or foreign objects in the hinge. If a manufacturing imperfection (e.g., a weld) is obstructing movement, contact customer support. Do not force the mechanism.
Stainless steel surface shows minor scratches.	Normal wear and tear, or use of abrasive cleaning materials.	Use only soft cloths for cleaning. Minor scratches are cosmetic and do not affect functionality.

## 6. SPECIFICATIONS

Feature	Detail
Model Number	TC2033

Feature	Detail
Brand	Feasto
Material	Stainless Steel (Countertop), Other (Frame)
Product Dimensions (L x W x H)	37.5" x 20" x 31.5"
Main Tabletop Load Capacity	66 lbs
Lower Shelf Load Capacity	44 lbs
Foldable Side Table Load Capacity	33 lbs
Total Load Capacity	140 lbs
Item Weight	18.7 lbs
Assembly Required	Yes
UPC	850038350666

## 7. WARRANTY AND SUPPORT

---

Information regarding product warranty and customer support details is not provided within this manual. For warranty claims, technical assistance, or to purchase replacement parts, please refer to the product packaging or contact Feasto customer service directly through their official website or the retailer where the product was purchased.

You can visit the Feasto store for more products and information: [Feasto Official Store](#)

