

FINTIE AMAJ002EU2

FINTIE Protective Hard Shell Case for Microsoft Surface Laptop 7 (13.8-inch, Model 2036)

Instruction Manual

1. PRODUCT OVERVIEW

This FINTIE hard shell case is designed to provide all-round protection for your 13.8-inch Microsoft Surface Laptop 7 (2024 Release, Model: 2036). The case features a slim, snap-on design that allows full access to all ports and ensures proper heat dissipation through its vented bottom.



Image: The FINTIE Crystal Clear Hard Shell Case installed on a Microsoft Surface Laptop 7, showcasing its transparent design.

2. COMPATIBILITY

This case is **specifically designed for the 13.8-inch Microsoft Surface Laptop 7 (2024 Release, Model: 2036)** To ensure proper fit, please verify the model number located on the back of your laptop.

WARNING: This case is NOT compatible with 13.5-inch Microsoft Surface Laptop 6/5/4/3/2/1, Surface Laptop Go, Surface Book, Surface Pro, Surface Go, or any other devices.



ATTENTION

Please pay attention to the type of your laptop

ONLY Fit 13.8 Inch
Microsoft Surface Laptop 7 (2024 Release) Model: 2036



13.8" Surface Laptop 7 2024 (Model: 2036)



13" Surface laptop Copilot+ PC 2025



13.5" Surface Laptop 6/5/4/3/2



Image: A visual guide illustrating the specific compatibility of the case with the 13.8-inch Microsoft Surface Laptop 7 (Model: 2036) and highlighting incompatible models.

3. PACKAGE CONTENTS

- 1 x FINTIE Hard Shell Case for 13.8-inch Microsoft Surface Laptop 7

4. INSTALLATION INSTRUCTIONS

Follow these steps to correctly install the protective hard shell case on your Microsoft Surface Laptop 7.

4.1. Top Case Installation

1. Ensure your laptop is clean and free of dust or debris.
2. Align the top cover (the one with the Microsoft logo cutout) with the lid of your laptop.
3. Gently press down on the edges until all clips snap securely into place. You should hear a subtle clicking sound as each clip engages.



Image: Step-by-step visual guide for attaching the top protective shell to the laptop lid.

4.2. Bottom Case Installation

1. Turn your laptop over to access the bottom.
2. Align the bottom cover with the base of your laptop, ensuring the cooling vents and port cutouts match.
3. Press firmly along the edges until all clips securely snap into place. Pay attention to the areas around the cooling vents to ensure a snug fit.

Fully Vented



Image: Step-by-step visual guide for attaching the bottom protective shell to the laptop base.

4.3. Video Installation Guide

Your browser does not support the video tag.

Video: A detailed installation guide for the FINTIE case on the 13.8-inch Microsoft Surface Laptop 7.

Your browser does not support the video tag.

Video: An alternative installation guide for a crystal case on the Microsoft Surface Laptop 7, demonstrating the snap-on process.

Your browser does not support the video tag.

Video: Installation demonstration for a matte black case on the Microsoft Surface Laptop 7, showing the secure fit and port access.

5. KEY FEATURES

- **All-Round Protection:** The hard plastic case provides comprehensive protection against scratches, dings, and minor impacts.

- **Slim Fit:** Designed to maintain the sleek profile of your Surface Laptop 7 without adding unnecessary bulk.
- **Full Access to Ports:** Precision cutouts ensure unobstructed access to all ports, buttons, and features.
- **Fully Vented:** The bottom cover features ventilation slots to prevent overheating and ensure efficient heat disbursement.
- **Easy Installation & Removal:** The snap-on design allows for quick and easy attachment and detachment.



Full Access to All Features



Image: A side profile of the laptop with the case, highlighting its slim design.

Slim Fit



Image: The underside of the case, illustrating the fully vented design for heat dissipation.



Image: A close-up view of the laptop's ports with the case installed, demonstrating precise cutouts for full accessibility.

Easy Installation

Ensure all the clips snapped securely

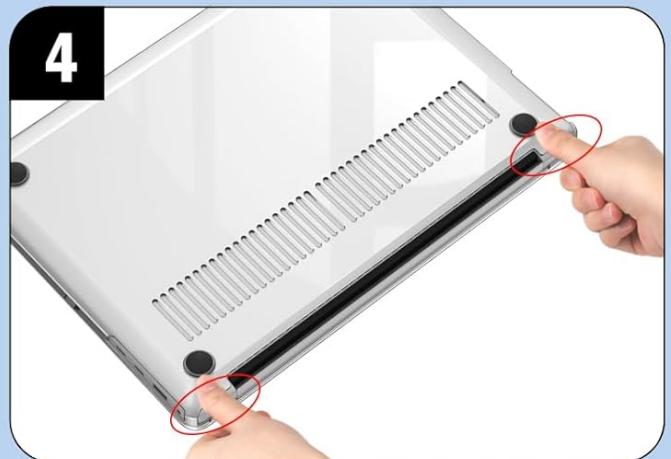
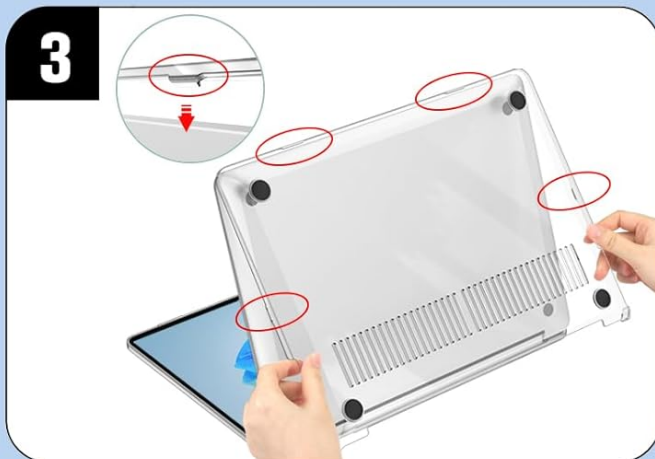
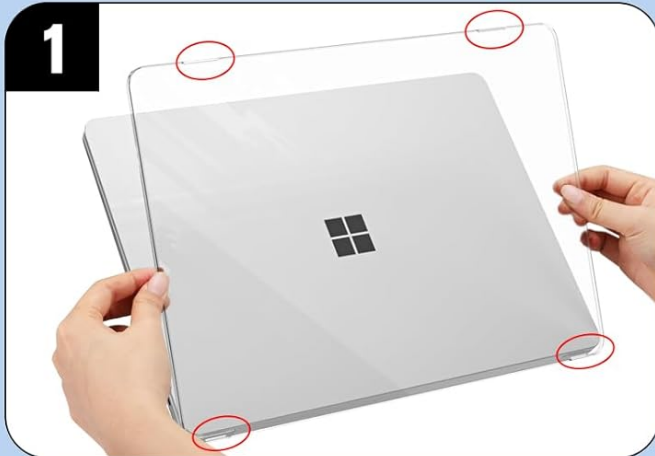


Image: A person carrying the Microsoft Surface Laptop 7 with the FINTIE case, highlighting portability and protection.

6. CARE AND MAINTENANCE

To maintain the appearance and functionality of your FINTIE hard shell case, wipe it regularly with a soft, damp cloth. Avoid using harsh chemicals or abrasive cleaners, as these may damage the material. Ensure the case is completely dry before reattaching it to your laptop.

7. TROUBLESHOOTING

- **Case not fitting correctly:** Double-check your laptop's model number against the compatibility information. Ensure all clips are properly aligned and pressed firmly until they snap into place.
- **Difficulty removing the case:** Gently lift the clips one by one, starting from a corner, to release the case. Avoid excessive force.
- **Overheating concerns:** The case is designed with ventilation slots. Ensure these slots are not obstructed by surfaces or other objects.



8. SPECIFICATIONS




Product Dimensions	12.05 x 8.86 x 0.63 inches
Item Weight	9.4 ounces
Item Model Number	AMAJ002EU2
Color	Crystal Clear
Shell Type	Hard
Special Features	Lightweight, Scratch Resistant

9. WARRANTY AND SUPPORT

FINTIE products are designed for quality and durability. For specific warranty information or customer support, please refer to the product packaging or visit the official FINTIE store. You can find more information and contact support through the [FINTIE Store on Amazon](#).

Related Documents - AMAJ002EU2

	<p>Fintie Wireless Keyboard with Touchpad User Manual for Surface Pro 8 & Pro X</p> <p>User manual for the Fintie Wireless Keyboard with Touchpad, compatible with Microsoft Surface Pro 8 and Surface Pro X. Includes pairing instructions, specifications, touchpad gestures, troubleshooting, and safety information.</p>
	<p>Fintie Wireless Keyboard for Fire HD 10 with Detachable Case User Manual</p> <p>User manual for the Fintie Wireless Keyboard for Fire HD 10 with Detachable Case, covering installation, removal, pairing, charging, specifications, and troubleshooting.</p>

<p>7-Color Backlit Wireless Keyboard with Detachable Back Case for iPad 11 Inch</p> <p>User Manual</p> 	<p>Fintie 7-Color Backlit Wireless Keyboard for iPad 11 Inch User Manual</p> <p>User manual for the Fintie 7-Color Backlit Wireless Keyboard with Detachable Back Case for iPad 11 Inch, covering pairing, backlight control, charging, specifications, touchpad functions, troubleshooting, safety, warranty, and regulatory compliance.</p>
	<p>Fintie Wireless Keyboard User Manual - Setup, Features, and Troubleshooting</p> <p>Comprehensive user manual for the Fintie Wireless Bluetooth Keyboard (Model EB220). Learn about pairing, charging, product overview, keys, troubleshooting, specifications, warranty, and recycling information.</p>
	<p>Fintie Wireless Keyboard User Manual</p> <p>User manual for the Fintie Wireless Keyboard, covering pairing, charging, specifications, troubleshooting, and warranty information.</p>
<p>Wireless Keyboard</p> <p>User Manual</p>	<p>Fintie Wireless Keyboard User Manual</p> <p>User manual for the Fintie Wireless Keyboard, covering pairing, sleep mode, charging, specifications, keys and functions, troubleshooting, safety tips, and FCC/IC compliance.</p>