

## EMKE F26SSC00WH-IT

# EMKE Thermostatic Shower Column F26SSC00WH-IT User Manual

Model: F26SSC00WH-IT

## 1. INTRODUCTION

This manual provides detailed instructions for the installation, operation, and maintenance of your EMKE Thermostatic Shower Column, model F26SSC00WH-IT. Please read this manual thoroughly before installation and use to ensure proper function and safety.

The EMKE Thermostatic Shower Column is designed for modern bathrooms, featuring a minimalist design, a thermostatic mixer, and a 3-function hand shower. It is engineered for ease of use and durability.

## 2. SETUP AND INSTALLATION

The EMKE shower kit is designed for straightforward installation and typically does not require professional assistance. It connects easily to standard plumbing connections.

### 2.1 Important Installation Notes

- Ensure hot water supply is on the left and cold water supply is on the right.
- The recommended installation height for the water outlet is 900-1000 mm above the floor.
- The distance between the hot and cold water supply axes should be 135-165 mm.

## Attenzione!

### Uscita acqua calda e fredda

900-1000 mm sopra il pavimento  
Distanza tra gli assi 135-165 mm  
Acqua calda a sinistra, acqua fredda a destra richiesta

Unità: mm



**Figure 2.1:** Hot and cold water connection requirements and dimensions (Unit: mm). Hot water must be on the left, cold water on the right. The hose length is 1.5 meters.

## 2.2 Mounting Methods

The shower column offers flexible mounting options to suit various bathroom layouts, even in limited spaces.

- **Vertical Installation:** Standard upright mounting.
- **Angled Installation:** Mounted at an angle.
- **Parallel Installation:** Mounted parallel to a wall feature.
- **Near the Edge:** Positioned close to the shower area edge.

# Diverse metodi di montaggio

Libertà individuale anche per spazi limitati



Installazione verticale



Installazione inclinata



Installazione parallela



Vicino al bordo

Figure 2.2: Various mounting methods for the shower column, providing individual freedom even in limited spaces.

## 3. OPERATING INSTRUCTIONS

### 3.1 Hand Shower Functions

The hand shower, with a diameter of 125 mm, provides three distinct jet modes for a customized showering experience. Easily switch between modes using the selector on the hand shower.

- **Classic Shower Jet:** A standard, steady flow for general showering.
- **Water Particle Jet:** A more focused, invigorating spray.
- **Mixed Jet:** A combination of jet types for a balanced experience.

## Varietà di getti

Per diverse esigenze igieniche, come piacevoli rituali di doccia, risciacquo potente delle macchie, ecc



Getti parziali



Getti completi



Gocce di pioggia fini

## Ugelli in silicone senza depositi

Niente più pulizia faticosa  
degli ugelli difficili da raggiungere



Figure 3.1: Variety of hand shower jets: partial jets, full jets, and fine rain drops, suitable for various hygiene needs.

### 3.2 Thermostatic Control and Safety

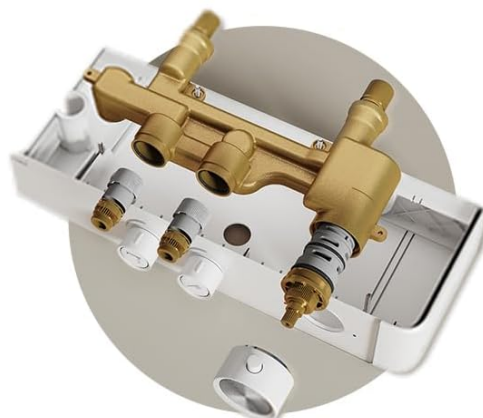
The shower column features a thermostatic mixer to maintain a consistent water temperature. It includes anti-scald mechanisms and a child safety lock for enhanced user protection.

# I tuoi vantaggi **inaspettati**

Nel corso degli anni, ci siamo impegnati nell'industria del bagno per offrire a ogni famiglia un'esperienza di bagno personalizzata



Spazio di archiviazione aggiuntivo



Meccanismi anti-scottatura



Termostato con blocco di sicurezza per bambini



SEDAL Cartuccia termostatica

**Figure 3.2:** Key features including anti-scald mechanisms and a thermostat with a child safety lock.

## 3.3 Adjustable Height and Integrated Shelf

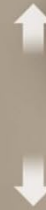
The hand shower holder is flexibly adjustable in height and tilt, allowing users of all ages, including children, to easily set their preferred shower height.

## Design intuitivo

Altezza e inclinazione regolabili in modo flessibile, doccetta fissabile al termostato



I bambini possono  
regolare l'altezza  
con facilità.



**Figure 3.3:** Intuitive design with flexible adjustable height and tilt for the hand shower.

The shower column also integrates a shelf with an innovative water outlet. This outlet provides a gentle, splash-free water flow, making it suitable for filling a bathtub or other uses.



## Uscita d'acqua innovativa

L'acqua scorre dolcemente e senza schizzi, rendendola ideale per l'uso nella vasca da bagno.

**Figure 3.4:** Innovative water outlet from the integrated shelf, providing gentle, splash-free water flow.

The integrated shelf provides additional storage space, measuring 365x135 mm, for shower essentials.



## 365x135 mm di spazio di archiviazione aggiuntivo

Mensola larga 365 mm per più spazio di archiviazione

Figure 3.5: Additional storage space measuring 365x135 mm.

### 4. MAINTENANCE

The EMKE shower column is constructed from high-quality, durable materials designed for long-term use and to maintain its appearance over time.

- **Cleaning:** Clean the shower column and hand shower regularly with a soft cloth and mild, non-abrasive cleaner. Avoid harsh chemicals that can damage the finish.
- **Nozzle Maintenance:** The hand shower features silicone nozzles designed to prevent mineral deposits, making them easy to clean. Simply rub the nozzles to dislodge any buildup.
- **Hose Care:** The 1.5-meter PVC hose is resistant to kinks, ensuring maximum flexibility and durability. Inspect the hose periodically for any signs of wear or damage.

# Protezione multilivello per una protezione migliore contro le scottature

Resistente alle pieghe – per una massima flessibilità nell'uso.

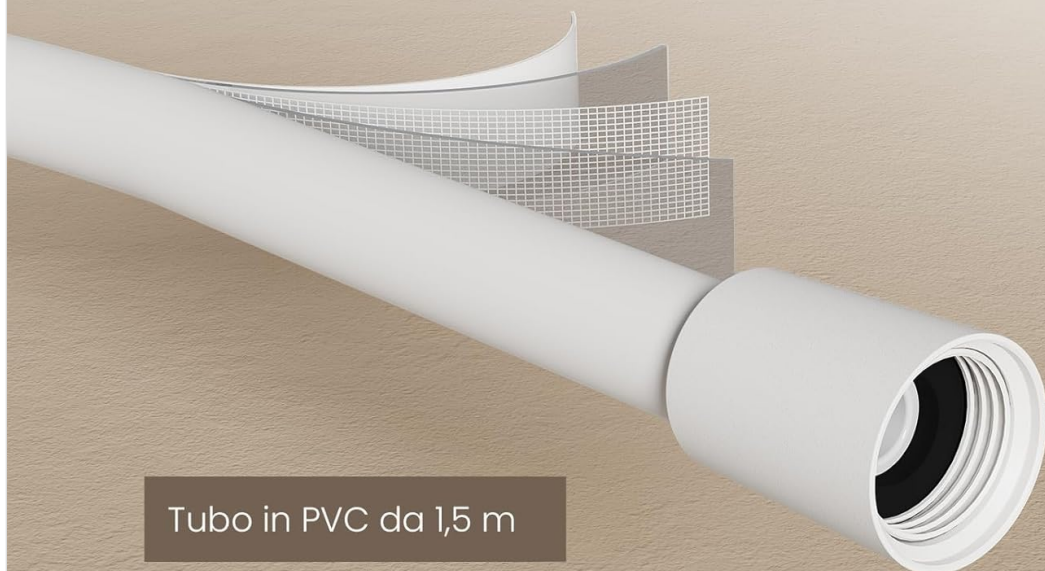


Figure 4.1: Multi-level protection of the 1.5m PVC hose, resistant to kinks for maximum flexibility.

## 5. TROUBLESHOOTING

If you encounter any issues with your EMKE Thermostatic Shower Column, please refer to the following common troubleshooting steps:

- **Low Water Pressure:** Check if the main water supply is fully open. Inspect the hand shower nozzles for blockages and clean them if necessary.
- **Inconsistent Water Temperature:** Ensure both hot and cold water supplies are correctly connected and fully open. If the issue persists, the thermostatic cartridge may require inspection by a qualified plumber.
- **Leaks:** Check all connections for tightness. Ensure all seals and O-rings are correctly seated and undamaged. Do not overtighten connections.
- **Hand Shower Not Switching Modes:** Ensure the selector on the hand shower is clean and free from debris. If stuck, gently try to rotate it.

For problems not resolved by these steps, please contact EMKE customer support.

## 6. SPECIFICATIONS

Feature	Specification
Brand	EMKE
Model Number	F26SSC00WH-IT
Color	White Muted
Mounting Type	Wall Mount
Number of Handles	1
Item Weight	3.5 Kilograms
Included Components	Shower Column with Thermostat
Hand Shower Diameter	125 mm
Hand Shower Functions	3 (Classic, Particle, Mixed)
Hose Length	1.5 meters (PVC)
Integrated Shelf Dimensions	365 x 135 mm
Hot/Cold Water Axis Distance	135-165 mm
Recommended Installation Height	900-1000 mm above floor

## 7. WARRANTY AND SUPPORT

For warranty information, product support, or to purchase replacement parts, please contact EMKE customer service directly. Keep your purchase receipt as proof of purchase.

You can typically find contact information on the EMKE official website or through your retailer.