

[Manuals.plus](#) /

> [Waterdrop](#) /

> Waterdrop WD-EWFL Alkaline Replacement Filter Instruction Manual

Waterdrop WD-EWFL

Waterdrop WD-EWFL Alkaline Replacement Filter Instruction Manual

For Waterdrop Rechargeable Electric Dispensers (Models WD-ED11L, WD-ED12W, WD-ED21W, WD-ED09W)

1. PRODUCT OVERVIEW

The Waterdrop WD-EWFL is an alkaline replacement filter designed for use with specific Waterdrop rechargeable electric water dispensers. This filter provides 6-stage filtration to enhance water quality by reducing chlorine, odors, and sediments, while also adding essential alkaline minerals for improved taste and health benefits.

Compatibility: This filter is compatible with Waterdrop Rechargeable Water Filter Dispenser models: WD-ED11L, WD-ED12W, WD-ED21W, and WD-ED09W.



Image: Waterdrop WD-EWFL filter shown alongside compatible Waterdrop rechargeable electric water dispenser models.

2. SETUP AND INSTALLATION

Follow these steps to install or replace the WD-EWFL filter in your Waterdrop rechargeable electric water dispenser:

1. **Step 1: Remove Water Pumping Unit.** Carefully take out the water pumping unit from your dispenser.
2. **Step 2: Remove Used Filter.** Turn the used filter counterclockwise to detach it from the pumping unit.
3. **Step 3: Install New Filter.** Attach the new WD-EWFL filter by screwing it clockwise into the water pumping unit until secure.
4. **Step 4: Reinstall Unit and Reset.** Place the water pumping unit with the new filter back into the dispenser. Press and hold the water drop icon button () on the dispenser for 3 seconds to reset the filter life indicator.

Important Note: For optimal filtration, activate the filter by flushing it. When using a new filter for the first time or after replacing it, please discard the first tank of filtered water and do not drink it. Wait approximately 10 seconds for water to flow through when using a new filter for the first time.



Image: Visual instructions for fast filter replacement, showing twisting off and screwing in the filter.

3. OPERATION

Once the filter is installed, your Waterdrop rechargeable electric dispenser is ready for use. Simply press the dispense button to get filtered water.

Smart Indicators



The dispenser features smart indicators to keep you informed about its status:

- **Power Indicator:**
 - Green light: Charging completed.
 - Red light flashes: Charge the device now.
- **Filter Life Indicator:**
 - Red light flashes: Replace filter soon.
 - Solid red light: Replace filter now.

Smart Indicators for Easy Use



Power indicator

-  Stays green:
Charging completed
-  Red light flashes:
Charge the device now

Filter life indicator



-  Red light flashes:
Replace filter soon
-  Stays red:
Replace filter now

Image: Smart indicators on the dispenser for power and filter life status.

4. MAINTENANCE

Filter Replacement Schedule

The Waterdrop WD-EWFL filter has a lifespan of approximately **3 months** or **80 gallons** of filtered water, whichever comes first. Regular replacement ensures optimal filtration performance and water quality. The filter life indicator on your dispenser will alert you when a replacement is needed. Refer to the "Setup and Installation" section for detailed filter replacement instructions.

A promotional graphic for the Waterdrop filter. On the left, a white cylindrical filter sits on a wooden table. To its right, a blue banner displays '2,400+' bottles and '\$4,000+' in white text. Above the banner, a yellow tag says '1 year*'. In the background, a row of clear plastic water bottles is visible. The text 'Use More, Save More' and 'Save your bills and our planet' is at the top left. The word 'SAVED!' is written in large blue letters at the top right. Below the filter, icons indicate '80 Gallons Filtered Water Volume' and '3 Months Filter Lifespan'. A small disclaimer at the bottom left reads: '*Each bottle contains 16.9 oz of water. The actual lifespan may vary based on local water conditions.'

Image: Filter lifespan details: 80 gallons or 3 months.

5. TROUBLESHOOTING

This section addresses common issues you might encounter with your Waterdrop WD-EWFL filter and dispenser.

- **Slow Water Flow:**

If water flow becomes noticeably slow, it may indicate that the filter is nearing the end of its lifespan or is clogged. Check the filter life indicator. If it's red or flashing, replace the filter. Ensure the filter is correctly installed and seated.

- **Unusual Taste or Odor:**

If the filtered water has an unusual taste or odor, ensure the filter was properly flushed during installation. If the issue persists and the filter is old, replace it. If it's a new filter, ensure it's a genuine Waterdrop product and contact customer support if the problem continues.

- **Filter Life Indicator Not Resetting:**

After replacing the filter, ensure you press and hold the water drop icon button () for 3 seconds until the indicator resets. If it still doesn't reset, try removing and reinserting the water pumping unit and filter, then attempt the reset again.

- **Dispenser Not Powering On/Charging:**

This issue is related to the dispenser unit, not the filter. Ensure the dispenser is properly charged. If the power indicator flashes red, connect it to a power source. If the problem persists, refer to your dispenser's specific manual or contact Waterdrop customer support.

6. SPECIFICATIONS

Feature	Detail
Model Number	WD-EWFL
Material	Resin
Filtration Stages	6-stage filtration
Filter Lifespan	Up to 3 months or 80 gallons (whichever comes first)
Product Benefits	Reduces Chlorine, Odors, Sediments; Alkalizes Water; Adds Minerals
Compatibility	Waterdrop Rechargeable Electric Dispensers (WD-ED11L, WD-ED12W, WD-ED21W, WD-ED09W)

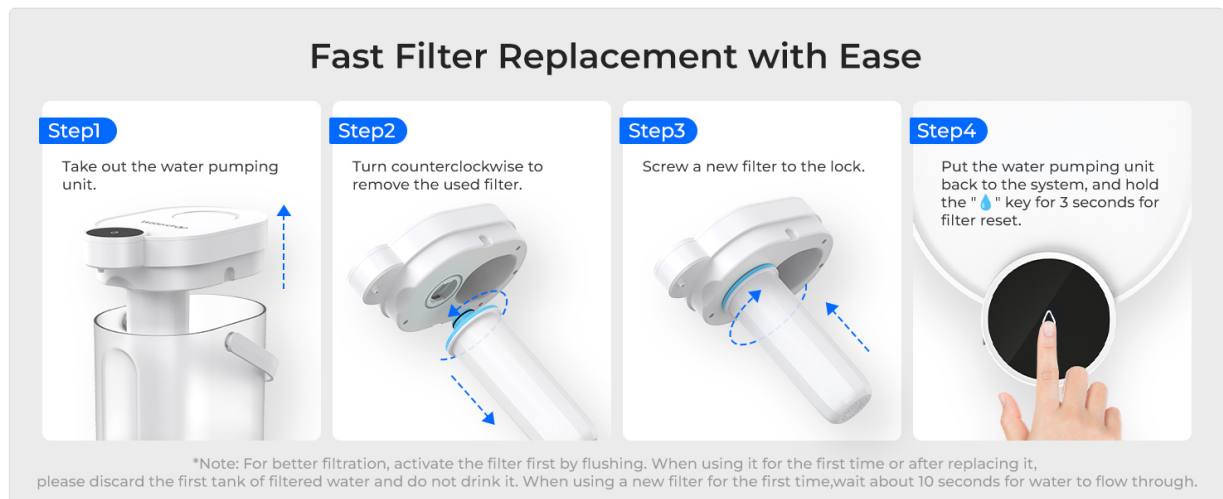


Image: Detailed view of the advanced 6-stage filtration system.

7. WARRANTY AND SUPPORT

For warranty information regarding your Waterdrop WD-EWFL replacement filter or your Waterdrop rechargeable electric dispenser, please refer to the documentation included with your original product purchase or visit the official Waterdrop website.

If you require further assistance, have questions about installation, operation, or troubleshooting that are not covered in this manual, please contact Waterdrop Customer Service. Contact details can typically be found on the product packaging or the official Waterdrop website.

Online Resources: You can often find additional support, FAQs, and product information on the [Waterdrop Brand Store on Amazon](#) or their official website.

