

Arylic S50+

Arylic Up2stream S50 Pro+ WiFi Bluetooth Audio Receiver Preamplifier User Manual

Model: S50+

1. INTRODUCTION

The Arylic Up2stream S50 Pro+ is a versatile WiFi and Bluetooth audio receiver preamplifier designed to integrate high-resolution audio streaming into your existing sound system. It features aptX HD Bluetooth 5.0, ESS Sabre DAC, and AKM ADC for superior sound quality, supporting various lossless audio formats. This device enables multi-room and multi-zone audio streaming and offers extensive connectivity options for a comprehensive audio experience.



Image 1.1.1: Arylic Up2stream S50 Pro+ Device. This image provides a general view of the Arylic Up2stream S50 Pro+ audio receiver, showcasing its compact design and front panel.



Image 1.1.2: Device in a Home Audio Environment. This image shows the Arylic Up2stream S50 Pro+ positioned within a typical home audio setup, demonstrating its integration with other components like a turntable and speakers.

2. PRODUCT OVERVIEW

2.1 Package Contents

The package includes the Arylic Up2stream S50 Pro+ unit and a remote control.

2.2 Front Panel

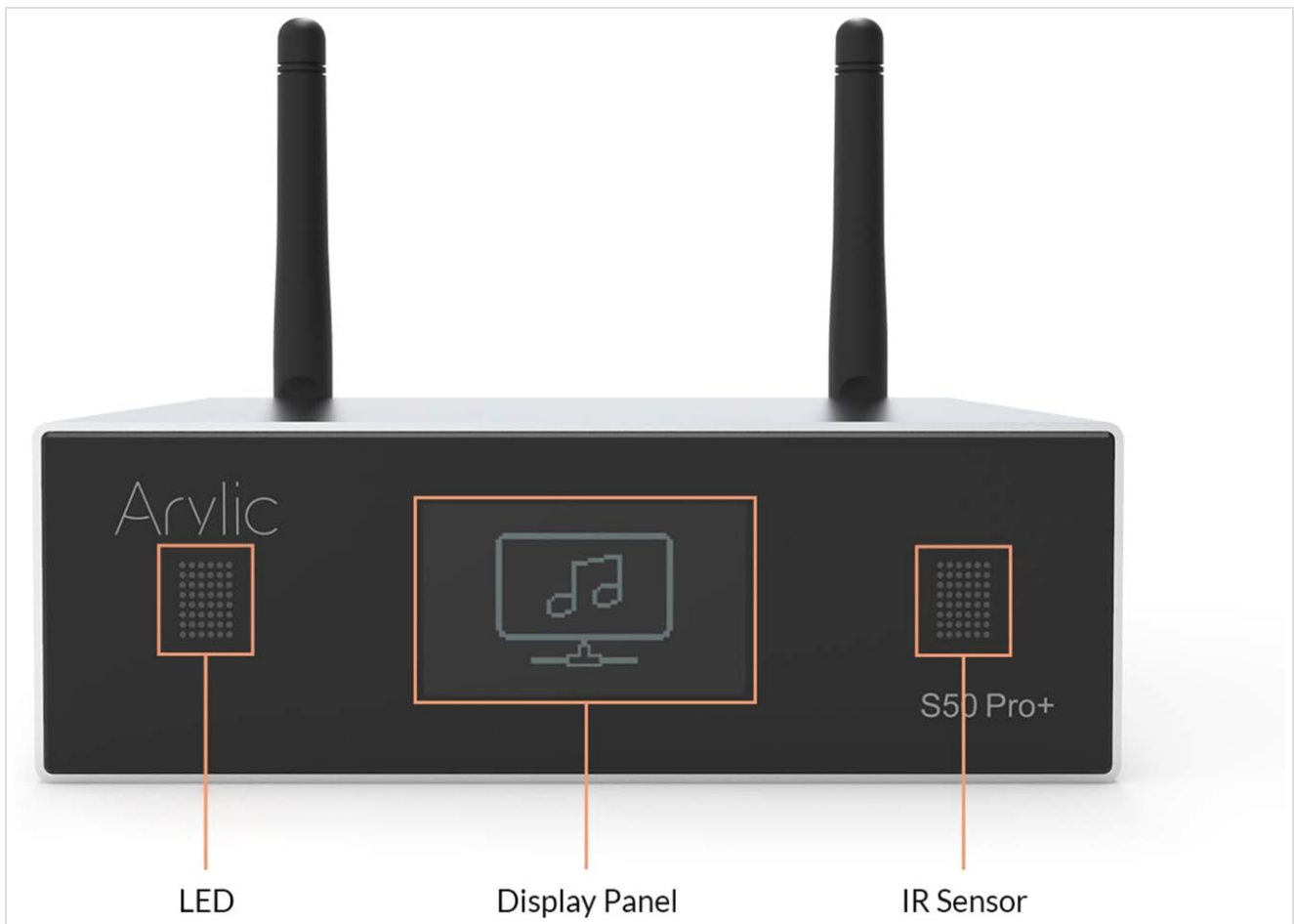


Image 2.2.1: Front Panel Layout. This image displays the front of the Arylic Up2stream S50 Pro+ unit, highlighting the LED indicator, the central display panel, and the infrared (IR) sensor for remote control input.

- **LED:** Status indicator.
- **Display Panel:** Shows current status, input source, and track information.
- **IR Sensor:** Receives signals from the remote control.



Image 2.2.2: Display Panel Detail. A close-up view of the device's display panel, showing an example of the information presented during operation.

2.3 Rear Panel

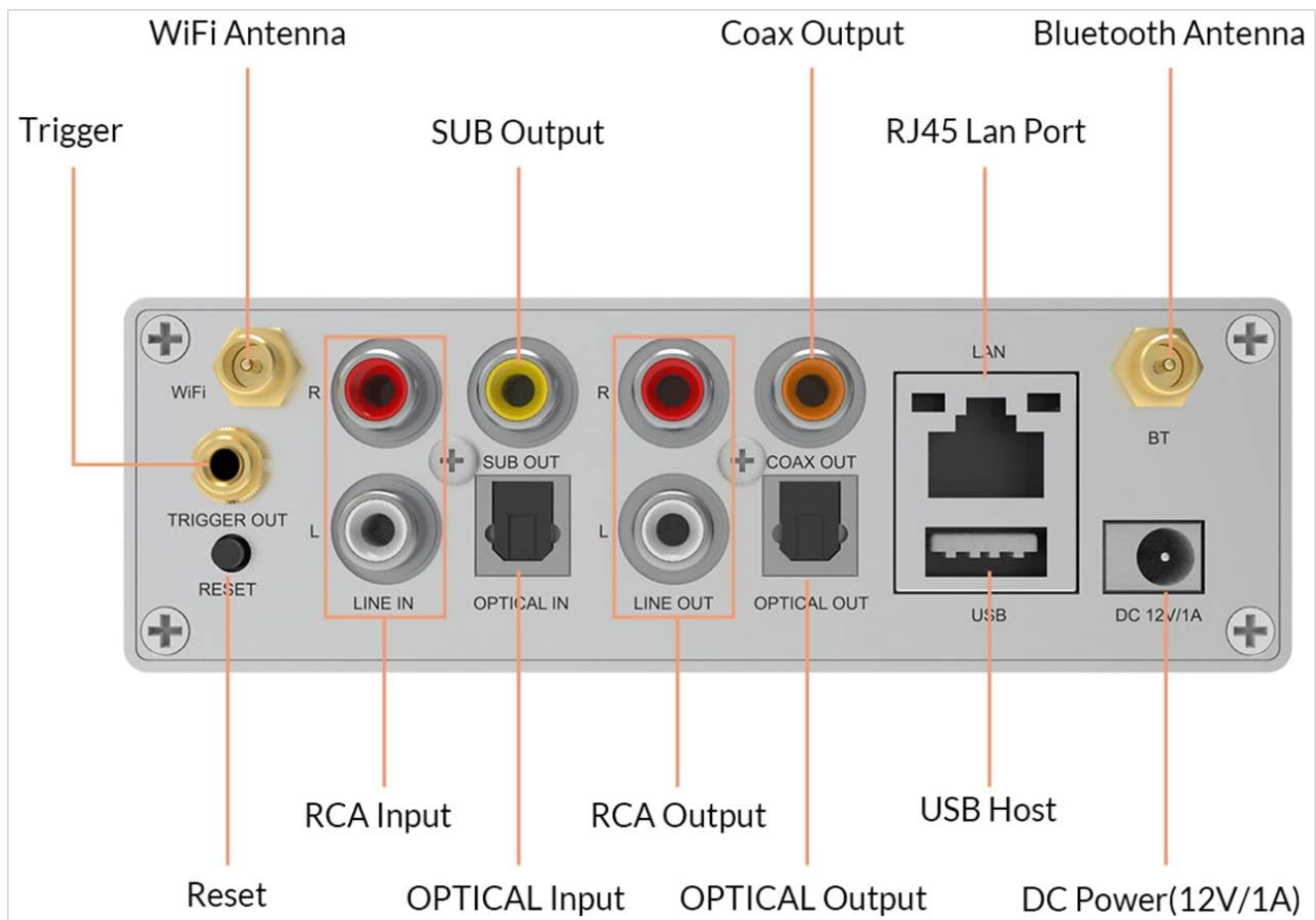


Image 2.3.1: Rear Panel Connectivity. This image illustrates the rear panel of the Arylic Up2stream S50 Pro+, detailing all available input and output ports including WiFi and Bluetooth antenna connectors, Trigger Out, Reset button, RCA Line In/Out, Optical In/Out, Coaxial Out, SUB Out, RJ45 LAN port, USB Host, and DC Power input.

- **WiFi Antenna:** For wireless network connection.
- **Bluetooth Antenna:** For Bluetooth audio reception.
- **Trigger Out:** 12V trigger output for controlling other devices.
- **Reset:** Button to reset the device.
- **RCA Input (Line In):** Analog audio input.
- **Optical Input:** Digital audio input.
- **SUB Output:** Subwoofer output.
- **RCA Output (Line Out):** Analog audio output.
- **Optical Output:** Digital audio output.
- **Coaxial Output:** Digital audio output.
- **RJ45 LAN Port:** For wired network connection.
- **USB Host:** For connecting USB storage devices.
- **DC Power (12V/1A):** Power input.

3. SETUP

3.1 Initial Connections

1. **Connect Antennas:** Screw the WiFi and Bluetooth antennas onto their respective connectors on the rear panel.
2. **Connect Audio Cables:**

- For analog sources, connect to the **RCA Input (Line In)**.
 - For digital sources, connect to the **Optical Input**.
 - To connect to an amplifier or active speakers, use the **RCA Output (Line Out)**, **Optical Output**, or **Coaxial Output**.
 - For a subwoofer, connect to the **SUB Output**.
3. **Connect Power:** Plug the provided power adapter into the **DC Power (12V/1A)** input and then into a wall outlet.

3.2 Network Setup

The S50 Pro+ supports both wired and wireless network connections.

3.2.1 Wired Connection (LAN)

Connect an Ethernet cable from your router to the **RJ45 LAN Port** on the rear panel. The device will automatically connect to your network.

3.2.2 Wireless Connection (WiFi)

1. Download the **4STREAM App** from the App Store (iOS) or Google Play Store (Android).
2. Ensure your mobile device is connected to the 2.4GHz WiFi network you intend to use for the S50 Pro+.
3. Open the 4STREAM App and follow the on-screen instructions to add a new device. The app will guide you through connecting the S50 Pro+ to your WiFi network.

4. OPERATING INSTRUCTIONS

4.1 Power On/Off

Once connected to power, the device will power on automatically. There is no physical power button on the unit. Power cycling is done by disconnecting and reconnecting the power adapter.

4.2 Source Selection

Input sources can be selected using the 4STREAM app or the included remote control.

- **WiFi:** For streaming from network services or local network storage.
- **Bluetooth:** For streaming from paired Bluetooth devices.
- **Line In:** For analog audio sources connected via RCA.
- **Optical In:** For digital audio sources connected via optical cable.
- **USB:** For playing audio files from a connected USB storage device.

4.3 Bluetooth Pairing

1. Select Bluetooth as the input source on the S50 Pro+ using the app or remote. The display panel will indicate Bluetooth mode.
2. On your mobile device, go to Bluetooth settings and search for "Arylic S50 Pro+".
3. Select the device to pair. Once paired, audio from your mobile device will stream to the S50 Pro+.

4.4 WiFi Streaming and Multi-room Audio

The 4STREAM app is the primary interface for WiFi streaming and managing multi-room audio.

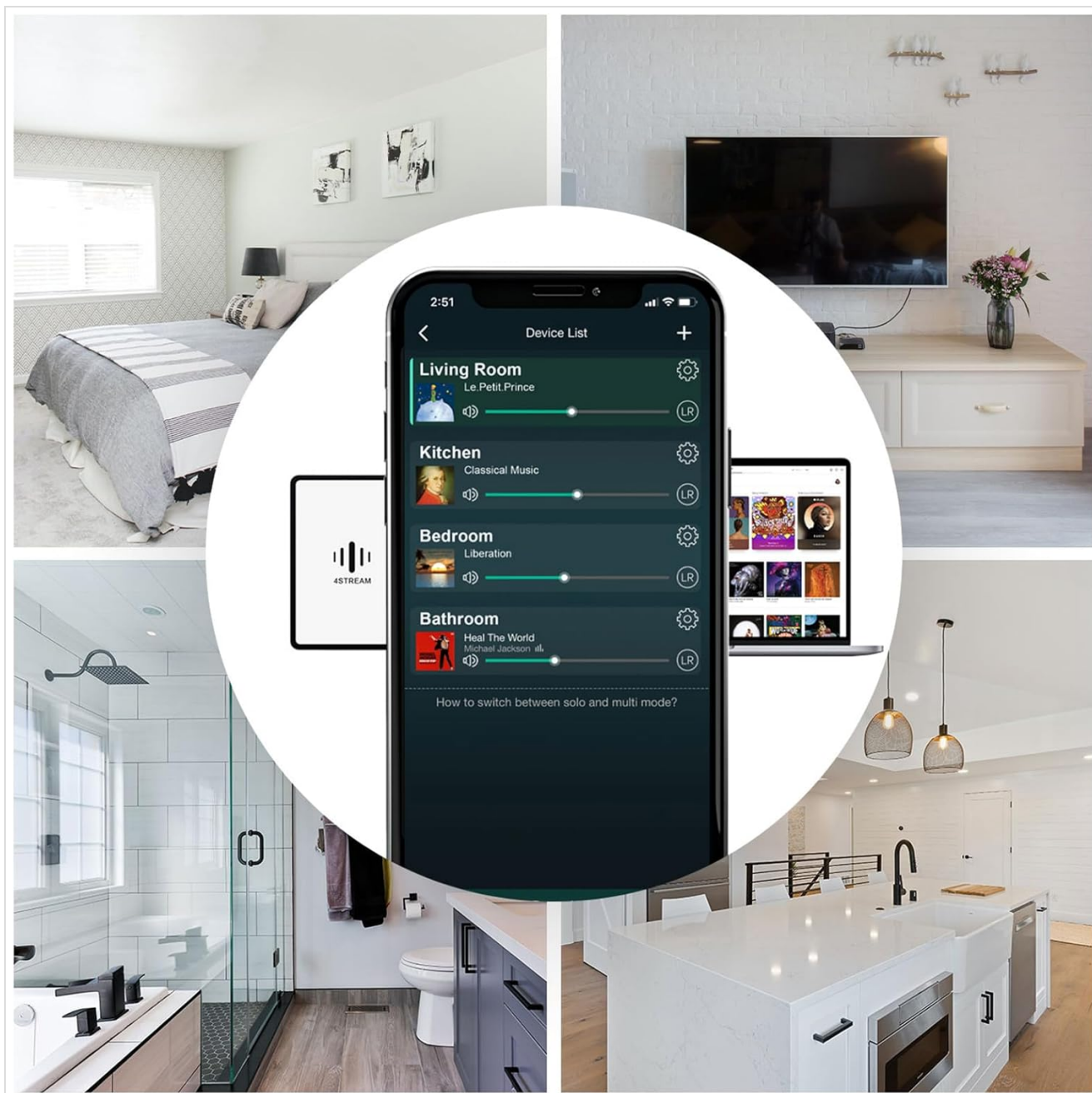


Image 4.4.1: Multi-room Control Interface. This image displays the 4STREAM mobile application interface, illustrating how users can manage and control audio playback across multiple Arylic devices in different rooms, enabling synchronized or independent streaming.

- **Music Services:** The app supports various streaming services such as Spotify, TuneIn, iHeartRadio, TIDAL, Qobuz, and more.
- **Local Music:** Stream music from your local network (NAS) or a connected USB stick.
- **AirPlay/DLNA/UPnP:** Use compatible applications to stream audio directly to the S50 Pro+.
- **Multi-room/Multi-zone:** Group multiple Arylic devices together to play the same music synchronously or control them independently in different zones.



Image 4.4.2: Supported Music Sources, Protocols, and App Interface. This collage showcases logos of various supported music streaming services, icons representing connectivity protocols (WiFi, Bluetooth 5.0, AirPlay, DLNA, UPnP), and multiple screenshots of the 4STREAM mobile application, demonstrating its comprehensive control capabilities.

4.5 USB Playback

Connect a USB flash drive containing audio files (MP3, APE, FLAC, WAV) to the **USB Host** port. The 4STREAM app can be used to browse and play music from the USB drive.

4.6 Web Control

Each S50 Pro+ unit can be controlled directly through a web browser. Once the device is connected to your network, find its IP address (usually available in the 4STREAM app or your router's client list) and enter it into a web browser on a device connected to the same network.

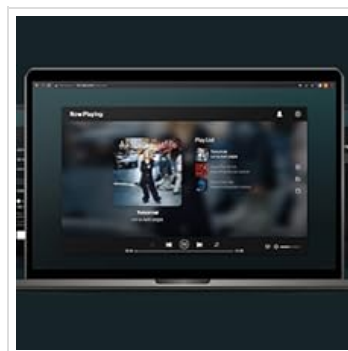


Image 4.6.1: Web Control Interface. This image shows a screenshot of the web-based control interface for the Arylic S50 Pro+, accessible via a web browser, allowing users to manage playback and settings.

4.7 Remote Control

The included remote control provides basic functions such as power, volume adjustment, input selection, and playback control.



Image 4.7.1: Remote Control Usage. This image depicts the Arylic S50 Pro+ set up with a television and speakers, demonstrating a user operating the device with its remote control for convenient playback management.

5. MAINTENANCE

5.1 Cleaning

To clean the device, use a soft, dry cloth. Do not use liquid cleaners or abrasive materials, as they may damage the finish or internal components.

5.2 Firmware Updates

Firmware updates are released periodically to improve performance and add new features. These updates can be performed through the 4STREAM app. Ensure the device has a stable internet connection during the update process.

6. TROUBLESHOOTING

- **No Power:** Ensure the power adapter is securely connected to both the device and a working power outlet.
- **No Sound:**
 - Check all audio cable connections.
 - Verify the correct input source is selected on the S50 Pro+.
 - Ensure the volume is not muted or set too low on both the S50 Pro+ and your connected amplifier/speakers.
- **Cannot Connect to WiFi:**
 - Ensure your router is working correctly and the S50 Pro+ is within range.
 - Confirm you are using the 2.4GHz band for initial setup via the 4STREAM app.
 - Try resetting the S50 Pro+ by pressing the **Reset** button on the rear panel.
- **Bluetooth Pairing Issues:**
 - Ensure the S50 Pro+ is in Bluetooth pairing mode.
 - Clear previous Bluetooth connections on your mobile device and try pairing again.
 - Move your mobile device closer to the S50 Pro+.
- **App Not Detecting Device:**
 - Ensure both your mobile device and the S50 Pro+ are on the same network.
 - Restart the 4STREAM app and the S50 Pro+.

7. SPECIFICATIONS

Feature	Detail
Model Number	S50+
Connectivity Technology	Wi-Fi, Bluetooth 5.0 (aptX HD)
Controller Type	APP (4STREAM), Web Browser, Remote Control
Special Features	Built-In Wi-Fi, Multiroom, Spotify Connect, AirPlay, DLNA, UPnP, ESS Sabre DAC, AKM ADC
Compatible Devices	Smartphone, Tablet, PC, NAS, USB Storage
Connector Types	RCA (Line In/Out), Optical (In/Out), Coaxial (Out), SUB (Out), USB Host, RJ45 LAN, 12V Trigger Out
Audio Output Mode	Stereo
Number of Channels	2
Supported Audio Formats	MP3, APE, FLAC, WAV Hi-Res Audio
Power Input	DC 12V/1A
Item Weight	0.9 Kilograms (1.98 pounds)

Package Dimensions	7.24 x 7.13 x 3.62 inches
--------------------	---------------------------

8. WARRANTY AND SUPPORT

8.1 Warranty Information


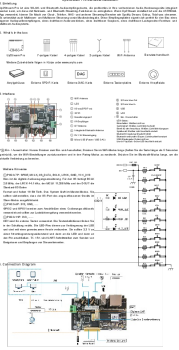

Please refer to the warranty card included with your product or visit the official Arylic website for detailed warranty terms and conditions. Keep your proof of purchase for warranty claims.




8.2 Customer Support

For technical assistance, troubleshooting, or further inquiries, please visit the Arylic support page on their official website or contact their customer service team. Contact details are typically available on the manufacturer's website.

© 2025 Arylic. All rights reserved.

Related Documents - S50+

	<p>Arylic S50 Pro+ Wireless Streaming Preamplifier User Manual</p> <p>User manual for the Arylic S50 Pro+ wireless streaming preamplifier, detailing features, specifications, setup, connectivity, app usage, and troubleshooting. Learn how to connect, stream music, and manage your audio system.</p>
	<p>Arylic Up2Stream Pro User Manual</p> <p>Comprehensive user manual for the Arylic Up2Stream Pro, a versatile WiFi and Bluetooth audio receiver card. Learn how to integrate it into your existing audio system for network streaming, multiroom audio, and enhanced playback capabilities. Includes setup instructions, interface details, specifications, and troubleshooting.</p>
	<p>Arylic S50 Pro User's Manual: Wireless Streaming Preamplifier Guide</p> <p>Comprehensive user manual for the Arylic S50 Pro wireless streaming preamplifier. Learn about setup, features, connectivity options (WiFi, Bluetooth, LAN), app control, multiroom audio, streaming services, and PC playback.</p>

 <p>Arylic S50 Pro+ User's Manual</p> <p>Wireless Streaming Preamplifier</p> <p>WiFi 6E, aptX HD, aptX Adaptive, aptX, AAC, LDAC</p>	<p>Arylic S50 Pro+ User Manual: Wireless Streaming Preamplifier Guide</p> <p>This user manual provides comprehensive instructions for the Arylic S50 Pro+ wireless streaming preamplifier. Learn about its features, specifications, connectivity options, app usage, multiroom capabilities, and PC playback for a superior audio experience.</p>
 <p>Arylic Up2Stream HD DAC High-Res Wireless Audio Streaming Board</p> <p>User Manual</p>	<p>Arylic Up2Stream HD DAC: High-Resolution Wireless Audio Streaming Board User Manual</p> <p>User manual for the Arylic Up2Stream HD DAC, a high-resolution wireless audio streaming board with WiFi and Bluetooth 5.0 APTX HD connectivity. Learn about its features, specifications, setup, and usage.</p>
 <p>Arylic Up2Stream HD DAC High-Res Wireless Audio Streaming Board</p> <p>User Manual</p>	<p>Arylic Up2Stream HD DAC: High-Res Wireless Audio Streaming Board User Manual</p> <p>Comprehensive user manual for the Arylic Up2Stream HD DAC, detailing its features, specifications, setup, and usage for high-resolution wireless audio streaming via WiFi and Bluetooth.</p>