

[Manuals.plus](#) /

› [ALLPOWERS](#) /

› ALLPOWERS B1000 Additional Battery User Manual

ALLPOWERS B1000

ALLPOWERS B1000 Additional Battery User Manual

Model: B1000

1. INTRODUCTION

The ALLPOWERS B1000 is an additional battery designed to expand the capacity and functionality of ALLPOWERS R1500 and R2500 portable power stations. It features a 1152 Wh LiFePO4 battery, offering extended power for home backup, outdoor activities, and RV use. The B1000 can also function as a standalone portable power source for various DC devices.

2. SAFETY INSTRUCTIONS

Please read and understand all safety instructions before operating the ALLPOWERS B1000. Failure to follow these instructions may result in electric shock, fire, or serious injury.

- Do not expose the unit to extreme temperatures, direct sunlight, or high humidity.
- Keep the unit away from flammable materials and liquids.
- Ensure proper ventilation during use and charging.
- Do not disassemble, repair, or modify the unit yourself. Contact ALLPOWERS support for service.
- Keep out of reach of children and pets.
- Use only ALLPOWERS approved accessories and charging cables.
- Avoid dropping or subjecting the unit to strong impacts.

3. PACKAGE CONTENTS

Verify that all items are included in your package:

- ALLPOWERS B1000 Additional Battery
- AC Charging Cable

- Connection Cable (for R1500/R2500)
- User Manual

4. PRODUCT DIAGRAM AND COMPONENTS

Familiarize yourself with the ports and features of your ALLPOWERS B1000 unit.



Image: Front panel and dimensions of the ALLPOWERS B1000. It features a central display, two USB-A ports, two USB-C ports, and a 12V car cigarette lighter socket. The unit measures 41.3 cm in length, 31.2 cm in width, and 26.5 cm in height.

1. **DC Output Section:** Includes USB-A, USB-C, and 12V Car Cigarette Lighter ports.
2. **Display Screen:** Shows battery level, input/output power, and other status indicators.
3. **Main Power Button:** To turn the unit on/off.
4. **AC Input Port:** For charging the unit via AC power.
5. **Expansion Port:** For connecting to ALLPOWERS R1500/R2500 power stations.

5. SETUP

5.1 Initial Charge

It is recommended to fully charge the ALLPOWERS B1000 before its first use to optimize battery performance and lifespan.

5.2 Connecting to ALLPOWERS R1500/R2500

The B1000 is designed to expand the capacity of your R1500 or R2500 portable power station. Up to three B1000 units can be connected to a single R1500, increasing the total capacity from 1152 Wh to 4608 Wh.

1. Ensure both the B1000 and the R1500/R2500 units are powered off.
2. Locate the expansion port on both the B1000 and your R1500/R2500.
3. Connect the provided connection cable securely between the expansion ports of the two units.
4. Power on the R1500/R2500 first, then the B1000. The R1500/R2500 display should indicate the expanded capacity.

Erweiterbares Powerstation

Die Kapazität von R1500 lässt sich mit 3 zusätzlichen ALLPOWERS B1000 Akkupacks von 1152Wh auf 4608Wh erweitern, ideal als Notstromversorgung für das Haus bei einem Stromausfall.



R1500
1152Wh

+

3*B1000
3*1152Wh

=

R1500 KIT
4608Wh

Image: Illustration of connecting multiple ALLPOWERS B1000 units to an R1500 power station to expand total energy capacity.

6. OPERATING INSTRUCTIONS

6.1 Powering On/Off

Press and hold the main power button for 3 seconds to turn the B1000 on or off. The display screen will illuminate when the unit is on.

6.2 Using as a Standalone Power Source

The B1000 can power DC devices independently. It features 2 USB-A ports, 2 USB-C ports, and 1 car cigarette lighter socket.

- Connect your device to the appropriate output port (USB-A, USB-C, or 12V car socket).
- Ensure the B1000 is powered on. The display will show the output power.

6.3 Using with R1500/R2500

When connected to an R1500 or R2500, the B1000 seamlessly integrates to provide additional power capacity. The R1500/R2500 will manage the power distribution and charging for both units.

6.4 ALLPOWERS App Control

The ALLPOWERS B1000 supports control and monitoring via the ALLPOWERS mobile application. Download the app from the App Store or Google Play.

ALLPOWERS in Ihren Händen

Download the **ALLPOWERS APP**

Download on the **App Store** | GET IT ON **Google Play**

Image: The ALLPOWERS B1000 can be monitored and controlled via the ALLPOWERS mobile application, available on iOS and Android.

1. Download and install the ALLPOWERS app on your smartphone.
2. Enable Bluetooth and Wi-Fi on your phone.
3. Open the app and follow the on-screen instructions to pair with your B1000 unit.
4. Monitor battery status, control output ports, and adjust settings through the app.

7. CHARGING

The ALLPOWERS B1000 can be charged via AC power.

7.1 AC Charging

To charge the B1000 using AC power:

1. Connect the provided AC charging cable to the AC input port on the B1000.
2. Plug the other end of the AC cable into a standard wall outlet.
3. The display will show the charging status. The B1000 supports fast charging up to 600W max when charged separately.

Schnelles Laden mit 600W max. AC-Eingang



Image: The ALLPOWERS B1000 supports fast AC charging up to 600W.

7.2 Charging When Connected to R1500/R2500

When the B1000 is connected to an R1500 or R2500, both units can be charged simultaneously using the R1500/R2500's AC charging cable. The R1500/R2500 will manage the charging process for the entire system.

7.3 Silent Charging Mode

The unit supports a silent charging mode, operating below 43 dB, which is ideal for use in quiet environments or during nighttime.

8. MAINTENANCE

Proper maintenance ensures the longevity and optimal performance of your ALLPOWERS B1000.

8.1 Battery Lifespan

The B1000 utilizes a durable LiFePO4 battery. This battery maintains over 80% of its maximum capacity after 3500 charge cycles and over 50% after 6500 cycles. This means the B1000 can be used for over 10 years with daily charging and discharging.

LiFePO4 Batterie

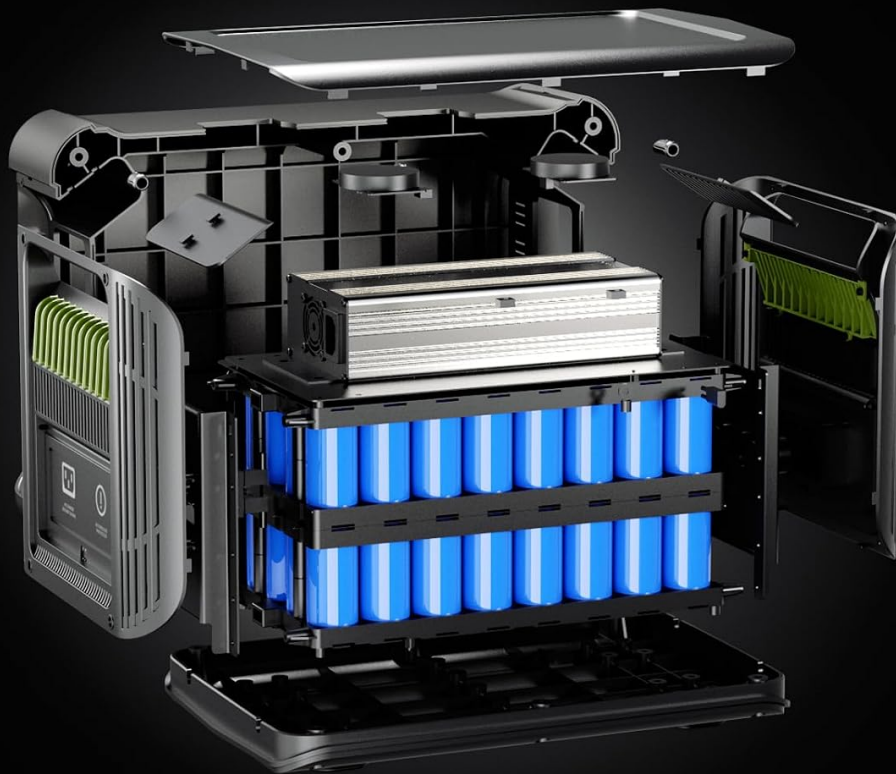


Image: Internal view highlighting the LiFePO4 battery cells within the ALLPOWERS B1000.

8.2 Storage

- Store the unit in a cool, dry place, away from direct sunlight and extreme temperatures.
- For long-term storage, charge the battery to approximately 50-80% every 3-6 months to prevent deep discharge.
- Keep the unit clean and free from dust.

8.3 Cleaning

Use a dry, soft cloth to wipe the exterior of the unit. Do not use abrasive cleaners or immerse the unit in water.

9. TROUBLESHOOTING

If you encounter issues with your ALLPOWERS B1000, refer to the following common problems and solutions:

- **Unit Not Turning On:** Ensure the battery is charged. Press and hold the power button for 3 seconds. If still unresponsive, contact support.
- **Devices Not Charging:** Check if the B1000 is powered on. Ensure cables are securely connected. Verify that the device's power requirements do not exceed the B1000's output limits.
- **Overload Protection Activated:** If the unit shuts down unexpectedly, it may be due to an overload. Disconnect some devices and restart the unit. Ensure the total power draw is within the specified limits.
- **Charging Issues:** Ensure the AC charging cable is properly connected to both the unit and the wall outlet. Check if the wall outlet is functional.

For persistent issues, please contact ALLPOWERS customer support.

10. SPECIFICATIONS

Feature	Specification
Brand	ALLPOWERS
Model Name	ALLPOWERS B1000 Additional Battery
Battery Type	LiFePO4
Capacity	1152 Wh
Rated Output Power	1800 W
Peak Output Power	3000 W
AC Input Power (Max)	600 W
Output Ports	2x USB-A, 2x USB-C, 1x Car Cigarette Lighter Socket
Voltage	230 Volts
Dimensions (L x W x H)	41.3 cm x 31.2 cm x 26.5 cm
Material	Acrylonitrile Butadiene Styrene (ABS)
Battery Lifespan	>3500 cycles to 80% capacity
Recommended Use	Camping, Home Emergency Power, RV, Emergency Situations

11. WARRANTY AND SUPPORT

For warranty information, please refer to the documentation provided with your purchase or visit the official ALLPOWERS website. If you require technical assistance or have questions regarding your ALLPOWERS B1000, please contact ALLPOWERS customer support through their official channels.

ALLPOWERS Customer Support:

- Refer to your product packaging for contact details.
- Visit the ALLPOWERS official website for FAQs and support resources.