

tectake 405164

tectake Industrial Style Laundry Sorter

Model: 405164

[Safety Instructions](#)

[Setup](#)

[Operating Instructions](#)

[Maintenance](#)

[Troubleshooting](#)

[Specifications](#)

[Warranty &](#)

[Support](#)

1. SAFETY INSTRUCTIONS

Please read these instructions carefully before assembly and use. Keep this manual for future reference.

- Ensure all components are present and undamaged before beginning assembly.
- Assemble the unit on a soft, clean surface to prevent scratches.
- Do not overtighten screws during assembly to avoid damaging components.
- Keep small parts away from children during assembly.
- Do not exceed the maximum load capacity for the laundry bags (5 kg per bag) or the top shelf (20 kg).
- Regularly check all fasteners to ensure they remain tight and secure.
- Do not stand or climb on the unit.
- Use the product only for its intended purpose: sorting and storing laundry.

2. SETUP AND ASSEMBLY

The tectake Industrial Style Laundry Sorter is designed for quick and straightforward assembly. Follow these steps to set up your unit.

2.1 Unpacking and Component Check

Carefully unpack all components from the packaging. Verify that all parts listed in the packaging content are present and undamaged. Refer to the included assembly diagram for a visual list of parts.

2.2 Frame Assembly

Assemble the main steel frame using the provided screws and tools. Ensure all connections are secure but do not fully tighten until the entire frame is assembled to allow for minor adjustments.

tectake
home



Rustieke industriële stijl
in een strak design met
duidelijke lijnen



2 uittrekbare manden
voor het eenvoudig
sorteren van je vuile was



Klittenbandsluitingen
de waszakken snel
verwijderen van het frame



Extra opbergplank
perfect voor wasmiddel &
badkamerbenodigdheden



Stevig stalen frame
met poedercoating, zeer
robuust en duurzaam



Onderhoudsvriendelijk
stof van waterafstotend &
duurzaam polyester



100 % stabiliteit
in hoogte verstelbare,
vloervriendelijke voetjes



ORDE ONTMOET
Design

Figure 1: Fully assembled laundry sorter, showcasing the industrial design and two compartments.

2.3 Attaching the Top Shelf

Once the frame is stable, place the wooden-look slatted shelf onto the top of the frame. Secure it using the designated fasteners. This shelf provides additional storage space for detergents or other items.

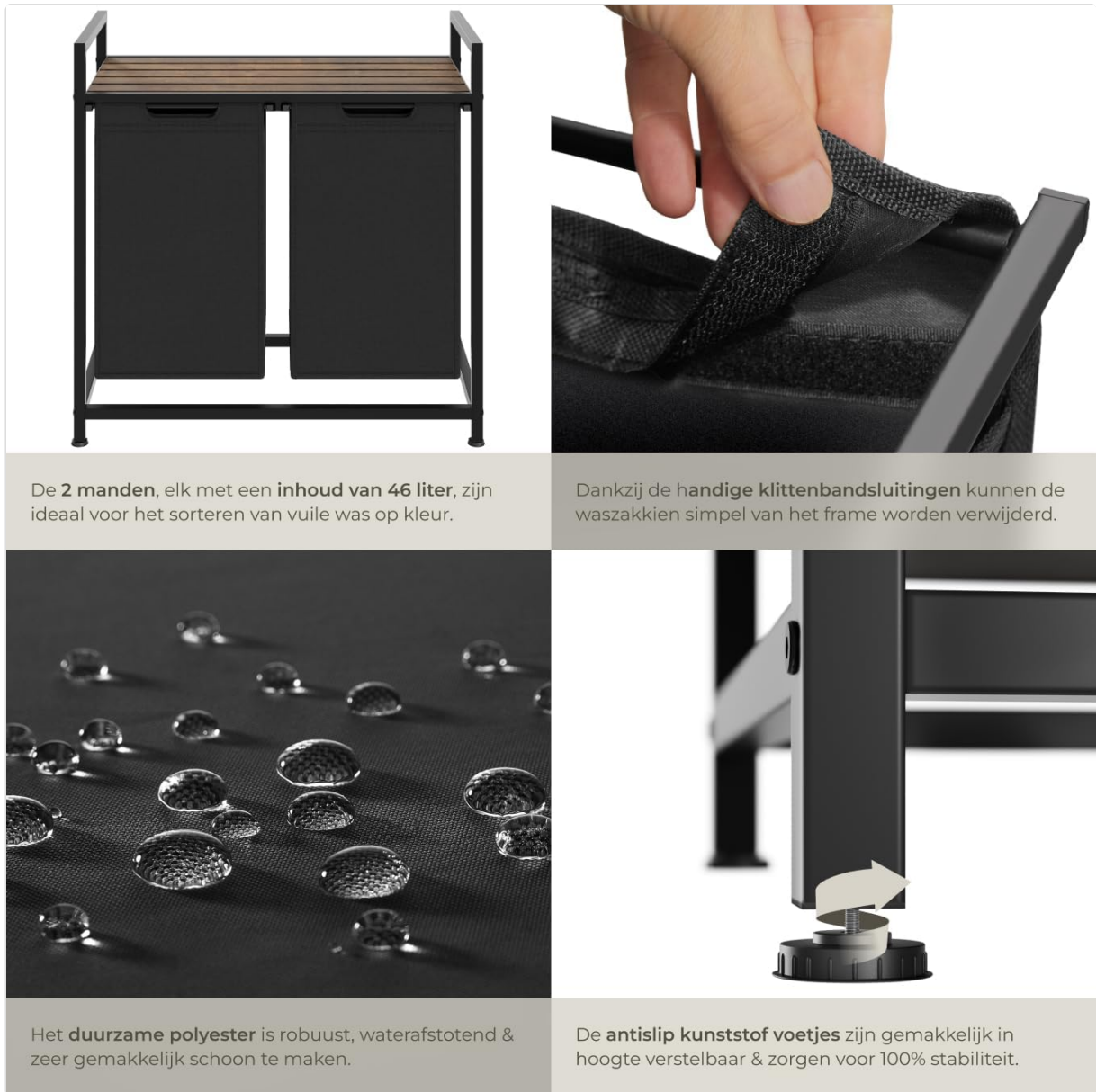
STIJLVOL OPBERGEN zeer toegankelijk



Figure 2: Close-up view highlighting the stable steel frame and the smooth extension mechanism for the laundry bags.

2.4 Installing the Laundry Bags

The two spacious polyester laundry bags are designed to slide into the frame. Attach them securely using the Velcro fasteners located on the bags and the frame. Ensure they are firmly attached to prevent them from detaching during use.



De **2 manden**, elk met een **inhoud van 46 liter**, zijn ideaal voor het sorteren van vuile was op kleur.

Dankzij de **handige klittenbandsluitingen** kunnen de waszakken simpel van het frame worden verwijderd.

Het **duurzame polyester** is robuust, waterafstotend & zeer gemakkelijk schoon te maken.

De **antislip kunststof voetjes** zijn gemakkelijk in hoogte verstelbaar & zorgen voor 100% stabiliteit.

Figure 3: Illustrates the 46-liter capacity of each laundry bag, the secure Velcro fasteners, the water-resistant polyester material, and the height-adjustable plastic feet.

2.5 Adjusting the Feet

The unit features height-adjustable plastic feet. Turn the feet clockwise or counter-clockwise to adjust the height and ensure the sorter is stable and level on uneven floors. These feet also protect your flooring from scratches.

3. OPERATING INSTRUCTIONS

This section provides guidance on how to effectively use your tectake laundry sorter.

3.1 Sorting Laundry

Utilize the two separate extendable compartments to sort your laundry by color, fabric type, or washing temperature. Each bag has a capacity of approximately 46 liters, making it easy to separate clothes before washing.

3.2 Removing and Transporting Laundry Bags

When a bag is full, simply detach the Velcro fasteners and slide the bag out of the frame. The durable polyester material and handles (if present, implied by "Poignée" in specs) make it convenient to transport the laundry directly to your washing machine. After emptying, reattach the bag using the Velcro fasteners.

3.3 Using the Top Storage Shelf

The slatted top shelf provides a convenient surface for storing laundry essentials such as detergent, fabric softener, or folded clean towels. Ensure items placed on the shelf do not exceed the maximum weight capacity of 20 kg.

4. MAINTENANCE AND CARE

Proper maintenance will ensure the longevity and continued functionality of your laundry sorter.

4.1 Cleaning the Frame and Shelf

Wipe the steel frame and wooden-look shelf with a soft, damp cloth. For stubborn dirt, a mild detergent can be used. Avoid abrasive cleaners or harsh chemicals, as these may damage the finish.

4.2 Cleaning the Laundry Bags

The polyester laundry bags are water-resistant and easy to clean. They can be wiped down with a damp cloth. For more thorough cleaning, the bags can be hand-washed with mild soap and air-dried. Do not machine wash or tumble dry, as this may damage the material or fasteners.

4.3 Regular Checks

Periodically check all screws and fasteners to ensure they are tight. Re-tighten if necessary. Inspect the laundry bags for any signs of wear or damage and replace if needed to maintain optimal performance.

5. TROUBLESHOOTING

This section addresses common issues you might encounter with your laundry sorter.

- **Unit is wobbly:** Ensure all assembly screws are tightened. Adjust the height-adjustable feet to level the unit on uneven surfaces.
- **Laundry bag detaches:** Verify that the Velcro fasteners are securely attached to the frame. Ensure the bag is not overloaded beyond its 5 kg capacity.
- **Difficulty sliding bags:** Check for any obstructions in the sliding mechanism. Ensure the bags are correctly aligned within their tracks.
- **Top shelf appears uneven:** Recheck the frame assembly to ensure it is square. Adjust the feet to level the entire unit.

6. SPECIFICATIONS

Detailed technical specifications for the tectake Industrial Style Laundry Sorter.

Model Number	405164
Overall Dimensions (L x W x H)	74 x 34 x 72 cm
Laundry Bag Dimensions (L x W x H)	30 x 30 x 51 cm
Top Shelf Dimensions (L x W)	69 x 33 cm
Volume per Laundry Bag	Approx. 46 liters
Load Capacity per Laundry Bag	5 kg

Load Capacity of Top Shelf	20 kg
Weight	7.9 kg
Materials	Powder-coated steel, particle board (wood-look), 100% polyester, polyethylene
Color	Black (frame and bags), Wood-look (shelf)
Special Features	Extendable compartments, height-adjustable feet, anti-slip, handle (on bags)

tectake
home

Productinformatie

AFMETINGEN

Totale afmetingen
74 x 34 x 72 cm

Legplank
69 x 33 cm

Waszakken
30 x 30 x 51 cm

TECHNISCHE DETAILS

Inhoud per waszak ca. 46 l
Draagkracht per waszak
5 kg
Draagkracht legplank 20 kg
Gewicht ca. 8 kg
Materiaal gepoedercoat staal, spaanplaat, 100% polyester, polyethyleen

INHOUD

Wassorteerder
Montagemateriaal
Handleiding

Afmetingen zijn bij benadering

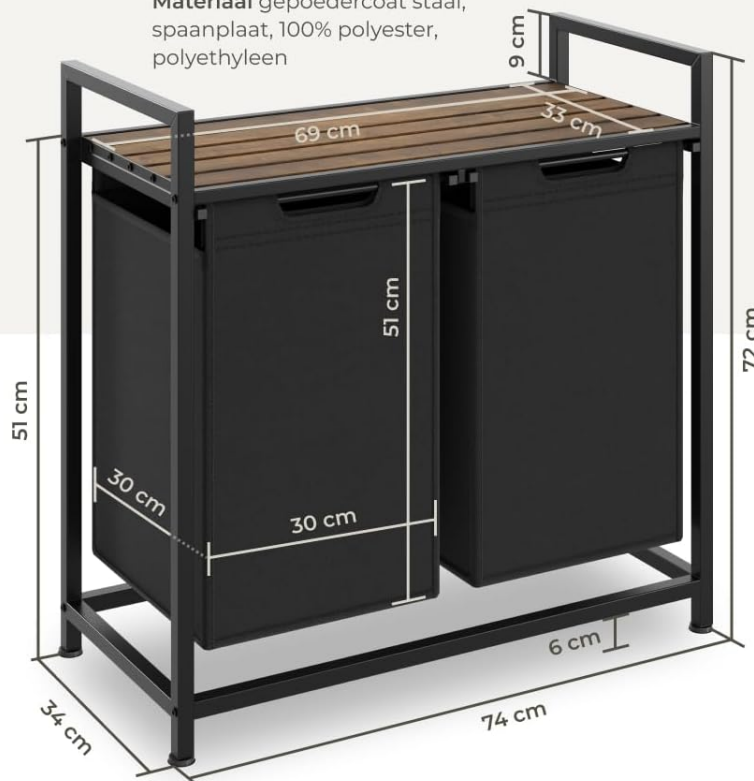


Figure 4: Visual representation of the product dimensions and technical details.

7. WARRANTY AND SUPPORT

Specific warranty information and customer support contact details are not provided within this manual. For warranty claims or technical assistance, please refer to your purchase documentation or contact the retailer where the product was purchased. You may also visit the official tectake website for general support information.

