

Cleer Arc 3 Gaming

Cleer ARC 3 Gaming Earbuds User Manual

Model: Arc 3 Gaming

INTRODUCTION

Thank you for choosing the Cleer ARC 3 Gaming Earbuds. These true wireless open-ear headphones are designed to provide an immersive audio experience with ultra-low latency, optimized for gaming across various platforms. This manual provides comprehensive instructions for setting up, operating, maintaining, and troubleshooting your new earbuds to ensure optimal performance and longevity.

PRODUCT OVERVIEW AND KEY FEATURES

The Cleer ARC 3 Gaming Earbuds combine advanced audio technology with ergonomic design for extended comfort during gaming sessions and daily use. Key features include:

- **Ultra-Low Latency:** Experience audio-video synchronization under 30ms for seamless gameplay, ideal for VR, PlayStation, PC, and Switch.
- **Extended Playtime:** Up to 50 hours of total playtime with the charging case (10 hours per earbud, plus 40 hours from case). A quick 5-minute charge provides 1.5 hours of play.
- **Exceptional Audio Quality:** Features Dolby Atmos audio and Snapdragon Sound with 16.2mm drivers for spatial audio and optimized Dolby Atmos head tracking.
- **Intuitive FHD Display & Touch Controls:** The charging case features an FHD display for managing Dolby sound effects, EQ settings, and more. Earbuds offer touch controls.
- **Wide Compatibility:** Dual connections via 2.4GHz USB-C dongle and Bluetooth 5.4, compatible with PS4/5, Switch, Meta Quest 2/3, phones, laptops, and PCs.
- **Multipoint Pairing:** Connect to two devices simultaneously and switch seamlessly.
- **Open-Ear Design:** Provides situational awareness while delivering high-quality audio.

Components

The Cleer ARC 3 Gaming Earbuds package includes:

- Cleer ARC 3 Open-Ear Gaming Earbuds (Left and Right)
- Charging Case with FHD Display
- USB-C Dongle
- USB Charging Cable
- User Manual (this document)



Image: The Cleer ARC 3 Gaming Earbuds, their smart charging case with a display, and the compact USB-C dongle. This image illustrates the main components included with the product.

Powerful Sound Optimized for Dolby Atmos



OPTIMIZED FOR
 **Dolby Atmos**



Image: A person wearing the Cleer ARC 3 earbuds, highlighting their design and the "Powerful Sound Optimized for Dolby Atmos" feature. This demonstrates the earbuds in use and their audio capabilities.

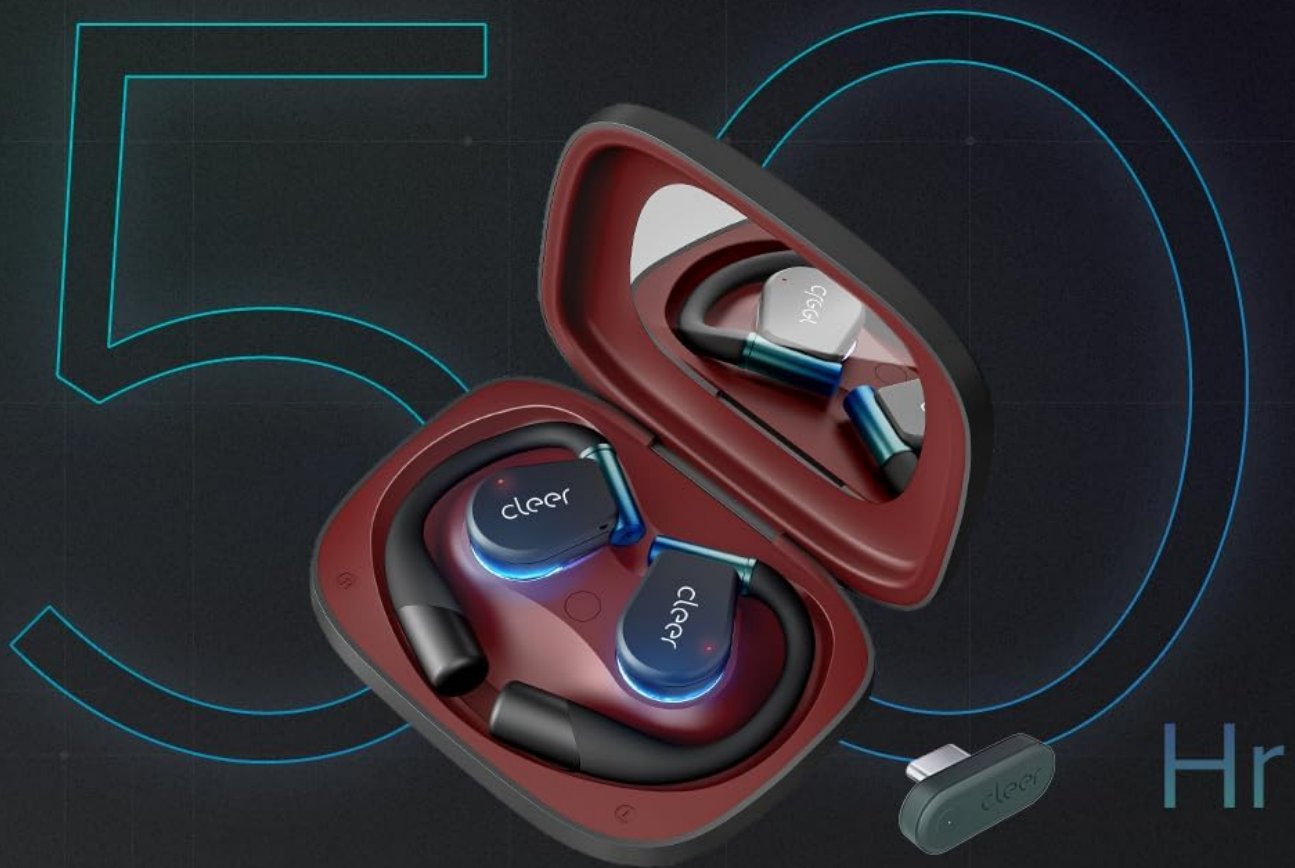
Ultra Low Latency

HD Bluetooth Dongle
with sub-30ms latency and USB-C
for enhanced connectivity



UNDER
30ms

Image: A close-up of the Cleer ARC 3 USB-C dongle, emphasizing its role in achieving ultra-low latency (under 30ms) with Bluetooth 5.4 connectivity. This image focuses on the connectivity technology.



Up to
50 hrs
Playtime

A Quick
5 min
charge gives
1.5 hrs
of Play time

Additional
40 hrs
with case

Image: The Cleer ARC 3 earbuds inside their charging case, illustrating the impressive battery life of up to 50 hours total playtime, with details on quick charging. This highlights the product's endurance.

Crystal Clear Calls

A close-up, profile view of a woman with reddish-brown hair tied back, wearing a yellow t-shirt. She is wearing a black Cleer ARC 3 earbud in her left ear. The background is a soft, out-of-focus gradient of blue and green. The text "Crystal Clear Calls" is at the top, and "Clear communication with crystal clear voice capture and noise-cancelling microphones." is at the bottom.

Clear communication with
crystal clear voice capture and
noise-cancelling microphones.

Image: A person wearing the Cleer ARC 3 earbuds, demonstrating their capability for "Crystal Clear Calls" through advanced voice capture and noise-cancelling microphones. This image focuses on communication features.

Play Across Platforms



Compatible with PC, Mac, Android
Phones, Xbox Series X & S, PS5, PS4,
Nintendo Switch (docked)

 **Bluetooth®**
v5.4

Image: The Cleer ARC 3 charging case display, surrounded by various gaming devices (PC, PS4/5, Switch, Meta Quest), illustrating the wide compatibility of the earbuds across multiple platforms. This image emphasizes versatility.

Cleer+ App

Personalize controls for
a customized audio experience

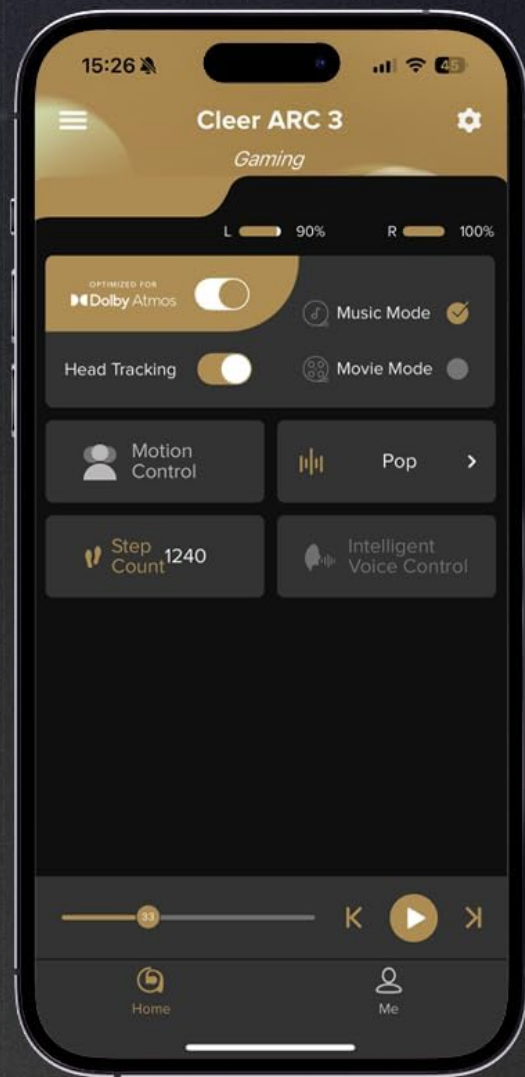


Image: The Cleer ARC 3 earbuds in their case next to a smartphone displaying the "Cleer+ App" interface, which allows for personalized controls and customized audio experiences. This image highlights the app integration.

SETUP AND INITIAL PAIRING

Before first use, ensure your Cleer ARC 3 earbuds and charging case are fully charged. Remove any protective films from the earbuds.

Charging the Earbuds and Case

- Place the earbuds into the charging case.
- Connect the charging case to a power source using a USB-C cable. The FHD display on the case will indicate charging status.
- The case also supports wireless charging.

Dongle Pairing (for PC, PS4/5, Switch, Meta Quest)



Image: A visual guide detailing the three steps for dongle pairing: plugging the dongle into a USB-C socket, long-pressing the MFB button on the dongle, and operating the headphones to enter pairing mode. This clarifies the dongle connection process.

1. **Step 1:** Plug the USB-C Dongle into your device (e.g., PC, PS5, Switch, Meta Quest).
2. **Step 2:** Long press the Multi-Function Button (MFB) on the Dongle until its LED starts flashing alternately between red and white. The Dongle is now ready for pairing.
3. **Step 3:** Operate the headphones to enter pairing mode. Place the headphones close to the Dongle. They will connect automatically. The LED of the Dongle will turn white (breathing).

Note: The Cleer dongle is not compatible with Xbox series. Xbox requires a different authorization.

Bluetooth Pairing (for Phones, Laptops)

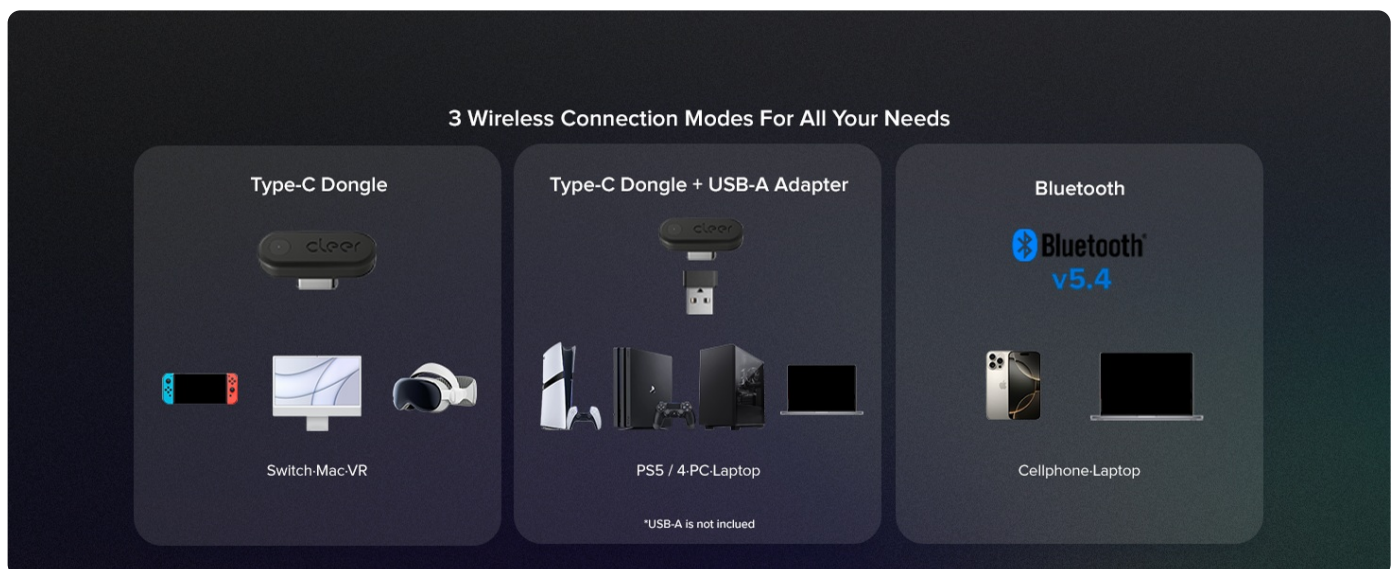


Image: A diagram illustrating three methods for Bluetooth pairing the Cleer ARC 3 earbuds: first pairing by pressing the MFB for 2 seconds, touch pad pairing by tapping 5 times, and charging case pairing via the case's display. This provides multiple pairing options.

There are multiple ways to pair your Cleer ARC 3 earbuds via Bluetooth:

1. Option 1: First Pairing

- Remove the protective film from the earbuds.

- Press the MFB button on both earbuds for 2 seconds.

2. Option 2: Touch Pad Pairing

- Tap the touch pad on either headphone 5 times and wait for the LED indicators to blink red and white.

3. Option 3: Charging Case Pairing

- Place both headphones into the case and close the lid.
- Select "Pairing Mode" on the "Auxiliary" page of the charging case display.
- Open the charging case.

After initiating pairing on the earbuds, select "Cleer ARC 3" from the list of available Bluetooth devices on your phone or laptop.

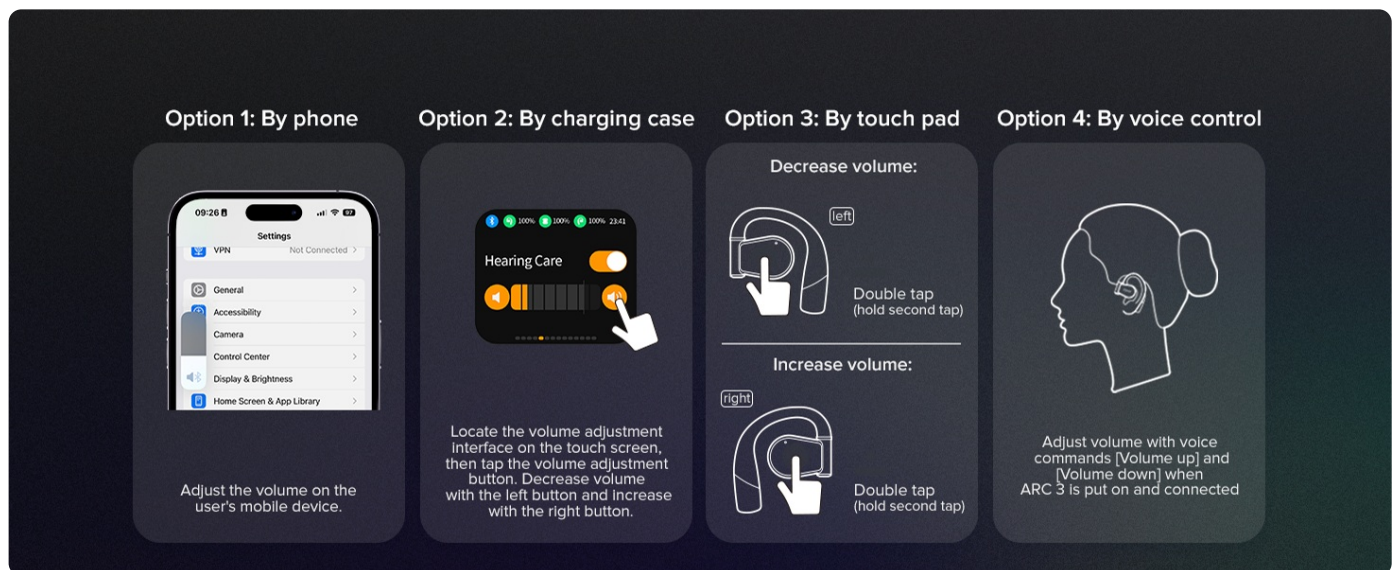


Image: A step-by-step guide for Bluetooth pairing the Cleer ARC 3 on a PC, including enabling Bluetooth, using touch pad pairing, and selecting the device from the list. This provides specific instructions for PC users.

OPERATING INSTRUCTIONS

Volume Control

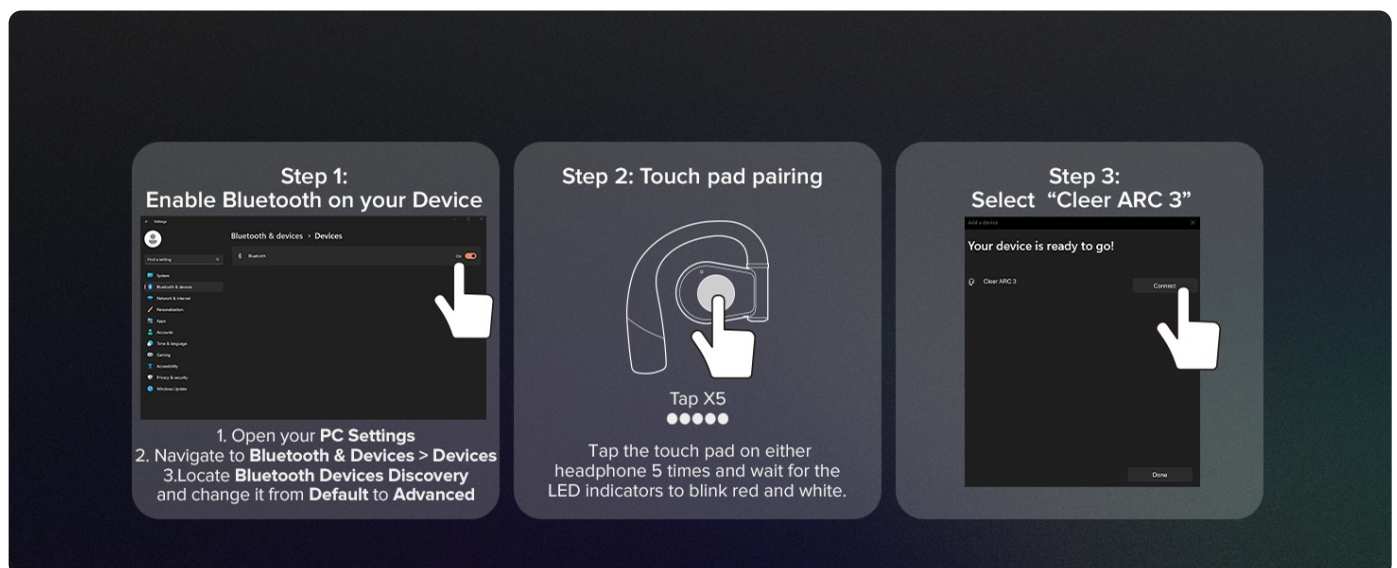


Image: A visual guide illustrating four methods for controlling volume on the Cleer ARC 3: via phone settings, the charging case display, earbud touch pads (double tap), and voice control. This offers comprehensive volume adjustment options.

You can adjust the volume of your Cleer ARC 3 Gaming Earbuds using several methods:

- **By Phone/Device:** Adjust the volume directly on your connected mobile device or computer.
- **By Charging Case:** Use the intuitive FHD display on the charging case to locate the volume adjustment interface. Tap the volume adjustment button, then use the left button to decrease and the right button to increase volume.
- **By Touch Pad:**
 - To *decrease* volume: Double tap the touch pad on the **left** earbud (hold second tap).
 - To *increase* volume: Double tap the touch pad on the **right** earbud (hold second tap).
- **By Voice Control:** Adjust volume using voice commands (e.g., "Volume up", "Volume down") when ARC 3 is worn and connected.

Using the Cleer+ App

The Cleer+ App allows for personalized controls and a customized audio experience. Download the app from your device's app store. Through the app, you can:

- Adjust EQ settings.
- Manage Dolby sound effects and head tracking.
- Access motion control and intelligent voice control settings.
- Monitor battery levels.
- Update firmware for earbuds and dongle.

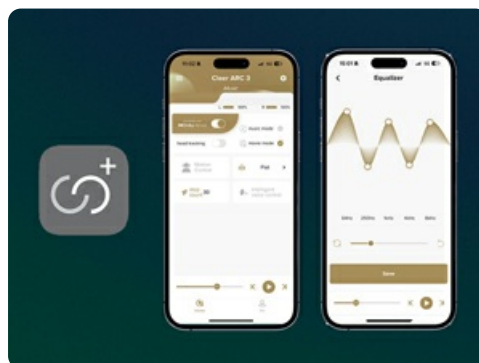


Image: The Cleer+ App icon alongside smartphone screens displaying the app's interface, which allows users to personalize controls and customize their audio experience. This highlights the software component of the product.

Dual Mode Operation (Game Mode / Music Mode)



Image: A visual representation of the Cleer ARC 3's "Dual Mode" functionality, showing a "Game Mode" for ultra-low latency and a "Music Mode" for high-definition audio. This illustrates the versatility of the earbuds for different uses.

The Cleer ARC 3 supports two primary modes:

- **Game Mode (Ultra-low Latency Mode):** Optimized for gaming, providing audio-video synchronization under 30ms. This mode is typically active when connected via the USB-C dongle.
- **Music Mode (High Definition Audio Mode):** Provides high-fidelity audio for music listening. This mode is generally used when connected via Bluetooth.

Switching between modes may be managed automatically based on the connection type or manually via the Cleer+ App or charging case display.

Multipoint Pairing

Leverage Bluetooth 5.4 technology to connect your ARC 3 earbuds to two devices simultaneously. This allows for seamless switching between audio sources, such as listening to game audio via the dongle and taking a call on your smartphone via Bluetooth.

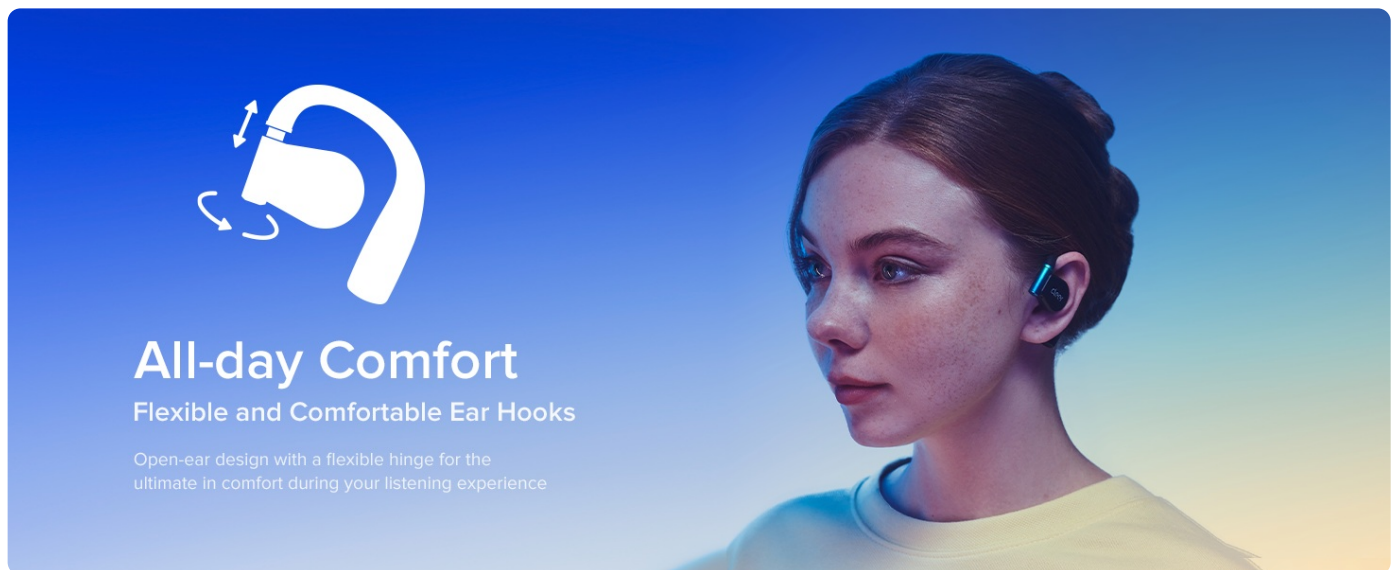


Image: A person simultaneously playing a game and engaging in a phone call, demonstrating the "Play & Chat At the Same Time" feature of the Cleer ARC 3 earbuds through multipoint pairing. This highlights the convenience of dual connectivity.

MAINTENANCE AND CARE

Proper care ensures the longevity and optimal performance of your Cleer ARC 3 Gaming Earbuds.

- **Cleaning:** Use a soft, dry, lint-free cloth to clean the earbuds and charging case. Do not use abrasive cleaners or solvents.
- **Water Resistance:** The earbuds are water resistant. Avoid submerging them in water or exposing them to excessive moisture. Dry them thoroughly if they get wet.
- **Storage:** When not in use, store the earbuds in their charging case to protect them and keep them charged.
- **Temperature:** Avoid exposing the earbuds to extreme temperatures (hot or cold).



Image: A close-up of the Cleer ARC 3 earbuds with small water droplets on their surface, visually representing their water-resistant feature. This image emphasizes the durability aspect of the product.

TROUBLESHOOTING

If you encounter issues with your Cleer ARC 3 Gaming Earbuds, refer to the following common solutions:

Problem	Possible Solution
Earbuds not pairing/connecting.	<ul style="list-style-type: none">• Ensure earbuds and dongle/device are in pairing mode.• Check if the earbuds are charged.• Move earbuds closer to the device.• Forget "Cleer ARC 3" from your device's Bluetooth list and re-pair.• Reset the earbuds (refer to Cleer+ App or charging case for reset option).
No sound or low volume.	<ul style="list-style-type: none">• Increase volume on both the earbuds (via touch controls/case) and the connected device.• Ensure earbuds are properly seated in your ears.• Check if the correct audio output device is selected on your computer/console.
Audio cutting in/out or distortion.	<ul style="list-style-type: none">• Move closer to the connected device to reduce interference.• Avoid strong electromagnetic interference sources.• Place earbuds back in the case and take them out again to reset the connection.• Update firmware via the Cleer+ App.
Charging case display not responding.	<ul style="list-style-type: none">• Ensure the case is charged.• Try restarting the case by connecting/disconnecting the charging cable.

SPECIFICATIONS

Feature	Detail
---------	--------


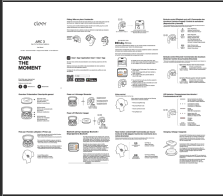

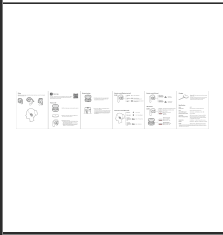
Feature	Detail
Model Name	ARC 3 Gaming
Wireless Communication Technology	Bluetooth
Bluetooth Version	5.4
Audio Latency	Under 30 Milliseconds
Battery Life (Earbuds)	Up to 10 hours
Total Playtime with Case	Up to 50 hours
Quick Charge	5 min charge for 1.5 hours playtime
Audio Driver Type	Dynamic Driver
Audio Driver Size	16.2 Millimeters
Frequency Range	20Hz to 20,000Hz
Earpiece Shape	Open-ear
Control Method	App, Touch
Water Resistance Level	Water Resistant
Item Weight	4.6 ounces (130.02 Grams)
Compatible Devices	Cellphones, Desktops, Gaming Consoles (PS4/5, Switch, Meta Quest 2/3), Laptops, Tablets
Manufacturer	Cleer
Color	Black

WARRANTY AND SUPPORT

For detailed warranty information, please refer to the warranty card included with your product or visit the official Cleer website. For technical support, product registration, or further assistance, please contact Cleer customer service. You can also find additional resources and a downloadable PDF user manual at:[Cleer ARC 3 User Manual \(PDF\)](#) Visit the official Cleer Store for more products and information:[Cleer Store on Amazon](#)



Related Documents

	<p>Cleer ARC II Sport Smart Open Ear True Wireless Headphones User Manual</p> <p>Comprehensive user manual for the Cleer ARC II Sport Smart Open Ear True Wireless Headphones, covering setup, features, controls, charging, sterilization, factory reset, LED behavior, specifications, maintenance, and warranty information.</p>
	<p>Cleer ARC 3 Open-Ear True Wireless Headphones User Manual</p> <p>User manual for the Cleer ARC 3 Open-Ear True Wireless Headphones, covering setup, controls, features like Dolby Atmos, voice control, charging, troubleshooting, maintenance, and warranty information.</p>
	<p>Cleer ARC 3 Open Ear True Wireless Headphones User Manual</p> <p>User manual for the Cleer ARC 3 Open Ear True Wireless Headphones, detailing setup, fitting, controls, features like Dolby Atmos, charging, maintenance, troubleshooting, and warranty information.</p>
	<p>Cleer ARC II Smart Open Ear True Wireless Headphones User Manual</p> <p>User guide for the Cleer ARC II Smart Open Ear True Wireless Headphones, detailing fitting instructions, app usage, Bluetooth pairing, earbud controls for playback and calls, head gesture controls, volume adjustments, LED indicator behavior, charging information, technical specifications, warranty details, and regulatory notices.</p>

Documents - Cleer – Arc 3 Gaming

[\[pdf\]](#) User Manual Quick Start Guide



CLEER ARC 3 QSG V8 20240812 User manual Cleer Limited 1396D 2ATS9 2ATS91396D 1396d
Overview Touch screen Touch control area LED indicator Charging case reset button
Fitting Rotate the earhook hinge and slide the earhook behind your ear until it rests
gently over the top of your ears. If you feel uncomfortable or unstable, stretch the
hinge appropriately to find the position that...

lang:en score:29 filesize: 2.45 M page_count: 3 document date: 2024-11-20

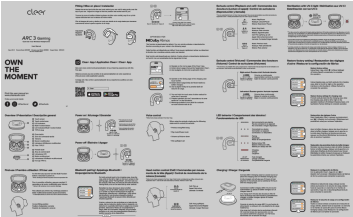
[\[pdf\]](#) User Manual Quick Start Guide



CLEER ARC 3 QSG V3 20240701 User manual Cleer Limited 1402D 2ATS9 2ATS91402D 1402d
Overview Touch screen LED indicators Multi Function Button MFB button TYPE-C
plug First-use Touch control area LED indicators Charging case reset button When
use for the first time, open the charging case tap and hold the reset button for 2
seconds to power on the charging case. The earbud indic...

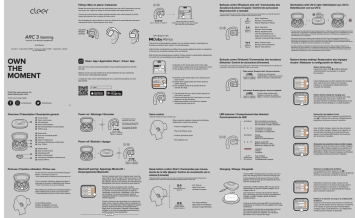
lang:en score:29 filesize: 1.46 M page_count: 2 document date: 2024-07-01

[\[pdf\]](#) Quick Start Guide



CLEER US ARC 3 Gaming QSG v2 20241030 outlines GAMING Manuales Stuffactory US v
1746555695 cdn shopify s files 1 0566 8405 2646 |||

...
lang:en score:19 filesize: 9.81 M page_count: 2 document date: 2025-04-17



[pdf] User Manual Quick Start Guide

CLEER US ARC 3 Gaming QSG v2 20241030 outlines Cleer Earbuds True Wireless Open Ear Headphones Ultra Low Latency Snapdragon Dolby Sound Bluetooth 5.4 USB C Dongle 50Hr Battery Compatible with PS4 PS5 PC Quest Switch White User Manual Arc B0DNDLBVS7 B0DMSDL1SL Electronics D1h9kFriQQL m media amazon images I |||

...

lang:en score:15 filesize: 9.86 M page_count: 2 document date: 2024-10-30