

Manuals+

[Q & A](#) | [Deep Search](#) | [Upload](#)

Manuals.plus /

> [YMT](#) /

> YMT Extended Run Fuel Gas Cap Instruction Manual for Honda and Champion Generators

YMT QP397

YMT Extended Run Fuel Gas Cap Instruction Manual

Model: QP397

1. INTRODUCTION

This manual provides detailed instructions for the installation, operation, and maintenance of your YMT Extended Run Fuel Gas Cap. This product is designed to facilitate a secure and leak-free connection for external fuel tanks, extending the run time of compatible generators.

2. PRODUCT COMPATIBILITY

The YMT Extended Run Fuel Gas Cap (Model QP397) is compatible with the following generator models:

- Honda EU1000i
- Honda EU2000i
- Honda EU3000i Handi
- Champion 2000-watt Generators

3. COMPONENTS INCLUDED

Your package includes the following components:

- 1x Extended Run Fuel Gas Cap (Aluminum, Silver)
- 1x Brass Hose Fitting (1/4" NPT male end with 1/4" barbed fitting)



Figure 3.1: The YMT Extended Run Fuel Gas Cap with the brass hose fitting attached.



Figure 3.2: The fuel cap and brass fitting shown separately, illustrating the components.

4. SETUP AND INSTALLATION

Follow these steps to properly install the YMT Extended Run Fuel Gas Cap:

1. **Prepare the Brass Fitting:** Ensure the brass hose fitting is clean and free of debris. The fitting has a 1/4" male NPT thread on one end and a 1/4" barbed fitting on the other.
2. **Attach Fitting to Cap:** Carefully thread the brass hose fitting into the center opening of the extended run fuel gas cap. Hand-tighten first, then use a wrench to secure it firmly, ensuring a snug fit without overtightening. The cap features an internal sealing mechanism to prevent leaks.
3. **Remove Existing Generator Cap:** With the generator turned off and cooled, carefully remove the existing fuel cap from your generator's fuel tank.
4. **Install Extended Run Cap:** Screw the assembled YMT Extended Run Fuel Gas Cap onto your generator's fuel tank opening. Ensure it is securely tightened to prevent fuel leaks.
5. **Connect External Fuel Line:** Attach a compatible plastic or rubber fuel hose (with a 1/4" inside diameter) from your external fuel tank to the barbed end of the brass fitting on the extended run cap. Secure the hose with a clamp if necessary to ensure a tight, leak-free connection.

Your browser does not support the video tag.

Video 4.1: This video demonstrates the quick connection and good sealing of the brass fuel nipple to the extended run fuel

cap, highlighting the assembly process.

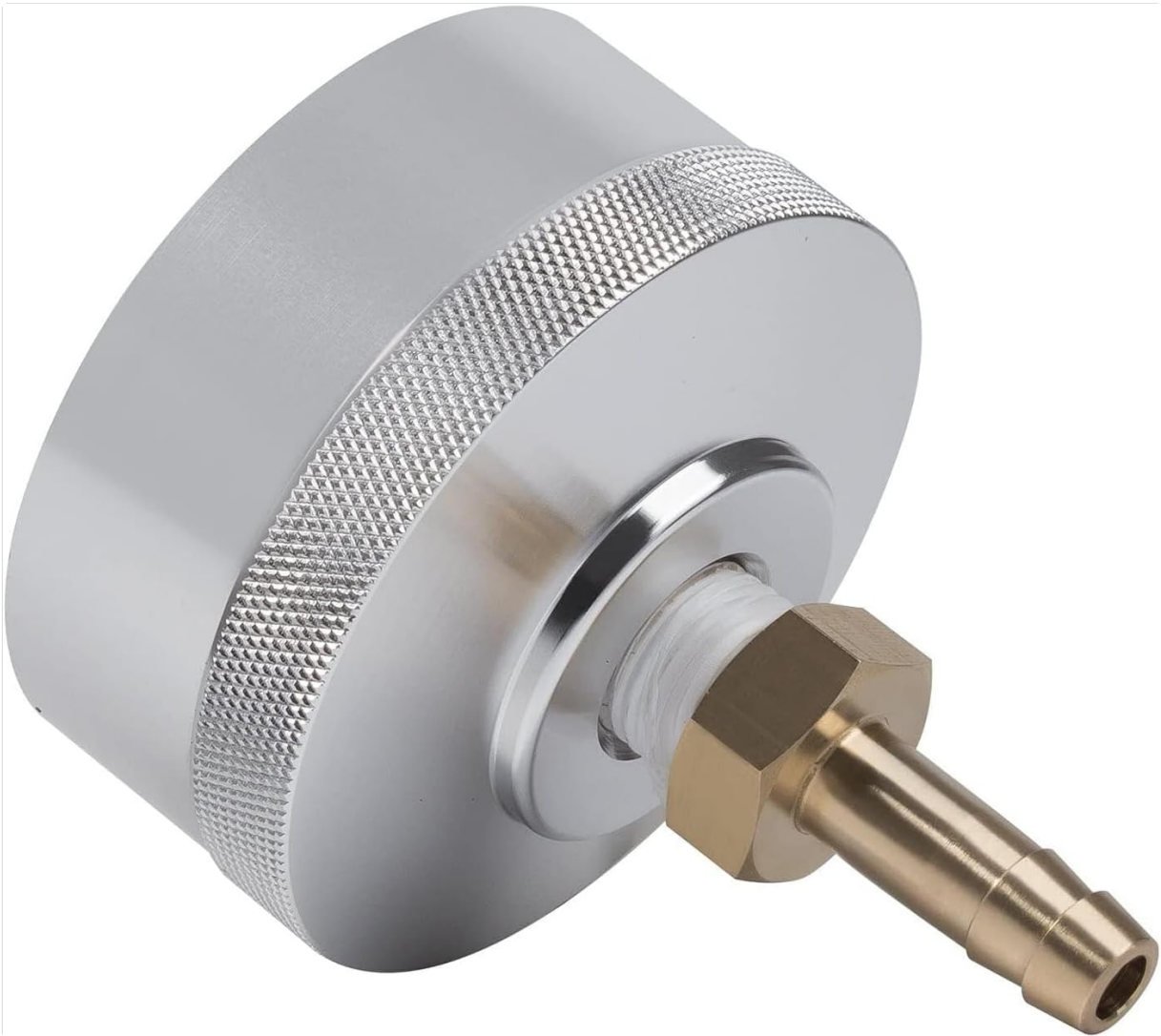


Figure 4.1: The fully assembled extended run fuel gas cap, ready for installation on a generator.

5. OPERATING INSTRUCTIONS

Once the YMT Extended Run Fuel Gas Cap is installed and connected to an external fuel tank:

- Ensure all connections (cap to generator, hose to cap, hose to external tank) are secure and leak-free before operating the generator.
- The extended run system allows the generator to draw fuel from the external tank, significantly increasing its operational duration.
- Always monitor fuel levels in both the generator's internal tank and the external tank.
- When disconnecting, ensure the generator is off and cooled. Disconnect the external fuel line first, then remove the extended run fuel cap.

6. MAINTENANCE

To ensure optimal performance and longevity of your YMT Extended Run Fuel Gas Cap:

- **Regular Inspection:** Periodically inspect the fuel cap and brass fitting for any signs of wear, damage, or corrosion.
- **Cleanliness:** Keep the cap and fitting clean. Wipe away any fuel spills immediately.

- **Seals:** Check the internal sealing mechanism for integrity. If any part appears compromised, replace the unit to prevent fuel leaks.
- **Storage:** When not in use for extended periods, store the cap in a clean, dry place away from direct sunlight and extreme temperatures.

7. TROUBLESHOOTING

Problem	Possible Cause	Solution
Fuel Leakage	Cap not tightened sufficiently; damaged seal; loose hose connection.	Ensure cap is securely tightened. Inspect internal seal for damage and replace if necessary. Check hose connections and secure with clamps.
Generator not drawing fuel from external tank	External fuel line kinked or blocked; improper connection; external tank empty.	Check fuel line for obstructions. Verify all connections are correct. Ensure external fuel tank has fuel.

8. SPECIFICATIONS

- **Model:** QP397
- **Brand:** YMT
- **Material:** Aluminum (Cap), Brass (Fitting)
- **Color:** Silver
- **Fitting Size:** 1/4" NPT Male to 1/4" Barbed
- **Item Weight:** Approximately 4.2 ounces (0.26 Pounds)
- **Package Dimensions:** 3 x 2 x 2 inches (approximate)
- **Automotive Fit Type:** Vehicle Specific Fit (Generators)

9. WARRANTY AND SUPPORT

YMT provides a service guarantee for this product. If you encounter any problems or require assistance, please contact us in a timely manner. We are committed to addressing your concerns as quickly as possible.

For support, please refer to the contact information provided with your purchase or on the official YMT website.