



[Manuals.plus](#) /

> [ZUCWO](#) /

> ZUCWO ZC81 2-in-1 Wireless CarPlay and Android Auto Adapter Instruction Manual

ZUCWO ZC81

ZUCWO ZC81 2-in-1 Wireless CarPlay and Android Auto Adapter Instruction Manual

Model: ZC81 | Brand: ZUCWO

INTRODUCTION

The ZUCWO ZC81 2-in-1 Wireless CarPlay and Android Auto Adapter converts your vehicle's existing wired CarPlay or Android Auto system into a wireless connection. This device provides a seamless and clutter-free integration of your smartphone with your car's infotainment system, allowing access to navigation, music, calls, and more without the need for cables.



Image: The ZUCWO ZC81 adapter, a compact black device with a USB-A connector.

COMPATIBILITY

This adapter is designed for vehicles with **factory-installed wired CarPlay or Android Auto systems**. It is compatible with:

- Over 800 car models manufactured in 2016 and newer.
- Smartphones running iOS 10+ for Wireless CarPlay.
- Smartphones running Android 11+ for Wireless Android Auto.

Important: This adapter does not add CarPlay or Android Auto functionality to vehicles that do not already have the wired version installed from the factory.

One Adapter, Two Worlds!

Efficient Processing,
Seamless Performance



Image: Graphic illustrating the adapter's compatibility with both Apple CarPlay (iOS 10+) and Android Auto (Android 11+).

SETUP AND INSTALLATION

Follow these simple steps to set up your ZUCWO ZC81 adapter:

- 1. Plug in the Adapter:** Connect the ZUCWO ZC81 adapter into your car's USB port (the one typically used for wired CarPlay/Android Auto).
- 2. Enable Bluetooth and Wi-Fi:** On your smartphone, ensure both Bluetooth and Wi-Fi are enabled.
- 3. Pair Your Phone:** Search for the adapter's Bluetooth signal on your phone and pair with it. Follow any on-screen prompts on your car's display to confirm the connection.

Once paired, the adapter will automatically reconnect to your phone every time you start your car, eliminating the need for repeated pairing.

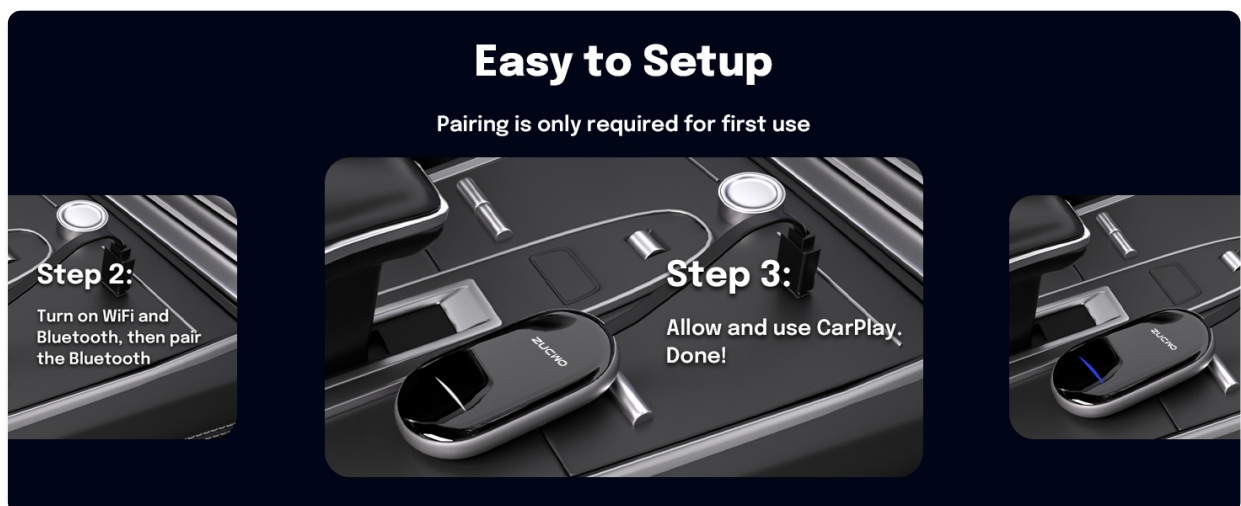


Image: A visual guide showing the three steps for easy setup: plugging the adapter into the car's USB port, enabling Bluetooth and Wi-Fi on the phone, and pairing.

Your browser does not support the video tag.

Video: Official ZUCWO video demonstrating the 2-in-1 Wireless CarPlay Adapter's features and quick setup.

OPERATING INSTRUCTIONS

Once connected, your car's display will show the CarPlay or Android Auto interface. You can now access various functions wirelessly:

- **Navigation:** Use your preferred map applications for directions.
- **Music Streaming:** Play audio from your favorite music apps.
- **Calls and Messages:** Make and receive calls, and send messages using voice commands or the car's interface.
- **Voice Assistant:** Utilize Siri or Google Assistant for hands-free control.

Note: For safety reasons, video streaming is not supported on CarPlay.



Image: A person driving, demonstrating hands-free control using voice commands for navigation and other functions.

KEY FEATURES

- **Fast and Stable Connection:** Equipped with a 5G module and Bluetooth 5.0, ensuring rapid data transmission and a stable, lag-free connection.
- **Compact Design:** The sleek, low-profile design keeps your car's interior tidy and organized.
- **2-in-1 Functionality:** Supports both Wireless CarPlay and Wireless Android Auto, offering flexibility for users with different smartphone operating systems.
- **Automatic Reconnection:** Once initially paired, the adapter automatically connects to your phone when you start your car.



Image: Visual representation of the adapter's fast and stable connection features, including Wi-Fi 5.8G and Bluetooth 5.0.

TROUBLESHOOTING

If you encounter connection issues, consider the following steps:

- **Restart Your Phone:** A simple phone restart can often resolve connectivity problems.
- **Reset the Adapter:** Disconnect and reconnect the adapter from your car's USB port.
- **Re-pair Bluetooth:** Delete the adapter from your phone's Bluetooth device list and re-pair it following the setup instructions.
- **Check Car Compatibility:** Ensure your vehicle has factory-installed wired CarPlay or Android Auto.
- **Check Phone OS:** Verify your phone is running iOS 10+ or Android 11+.

SPECIFICATIONS

Feature	Detail
Product Dimensions	1.46 x 0.39 x 2.6 inches
Item Weight	1.76 ounces
Model Number	ZC81
Compatible Devices	Smartphone (iOS 10+, Android 11+)
Connector Type	USB Type A, USB Type C
Color	Black
Manufacturer	ZUCWO

WARRANTY AND SUPPORT

For warranty information or technical support, please refer to the contact details provided with your product packaging or visit the official ZUCWO website. Keep your purchase receipt for warranty claims.