

## Manuals+

[Q & A](#) | [Deep Search](#) | [Upload](#)

Manuals.plus /

› [ESR](#) /

› ESR HaloLock Classic Hybrid Case for Samsung Galaxy S25 Ultra Instruction Manual

## ESR Samsung Galaxy S25 Ultra

# ESR HaloLock Classic Hybrid Case for Samsung Galaxy S25 Ultra Instruction Manual

Model: Samsung Galaxy S25 Ultra

## 1. INTRODUCTION

---

Thank you for choosing the ESR HaloLock Classic Hybrid Case for your Samsung Galaxy S25 Ultra. This case is engineered to provide robust protection while enhancing your device's functionality with MagSafe compatibility. This manual will guide you through the installation, usage, and maintenance of your new phone case, ensuring optimal performance and longevity.



Image 1.1: ESR HaloLock Classic Hybrid Case in Clear Black for Samsung Galaxy S25 Ultra.

## 2. PRODUCT FEATURES

- **Compatibility:** Specifically designed for the Samsung Galaxy S25 Ultra, ensuring full functionality with precise cutouts for speakers, ports, and easy-press buttons.
- **Stronger Magnetic Lock:** Features powerful built-in magnets with 1,500 g of holding force for faster, easier place-and-go wireless charging and secure attachment to MagSafe accessories.
- **Military-Grade Drop Protection:** Rigorously tested to provide total protection on all sides, incorporating specially designed Air Guard corners to absorb shock.
- **Screen and Camera Protection:** Equipped with a raised screen edge (1.2 mm) and Camera Guard (0.7 mm) to provide enhanced scratch protection for critical areas.
- **Stay Original:** The lightweight, smooth, crystal-clear acrylic back allows you to showcase your Galaxy S25 Ultra's original design while being yellowing resistant.

# Strong Magnetic Lock

2x stronger magnets



Image 2.1: Illustration of the strong magnetic lock, demonstrating 1,500g of holding force compared to standard 700g magnets.

# 11-ft Drop Protection

Reinforced with shock-absorbing  
Air Guard corners



Image 2.2: Visual representation of the case's 11-ft drop protection, highlighting reinforced Air Guard corners.

# Raised-Edge Protection

Raised screen edge keep your screen and lenses scratch-free

**1.2 mm**

Screen edge

**0.7 mm**

Camera Guard

Only compatible with individual lens protectors

Image 2.3: Close-up view showing the raised screen edge (1.2 mm) and Camera Guard (0.7 mm) for enhanced protection against scratches.

# Tough Acrylic Back

Enhanced scratch resistance for a flawless look

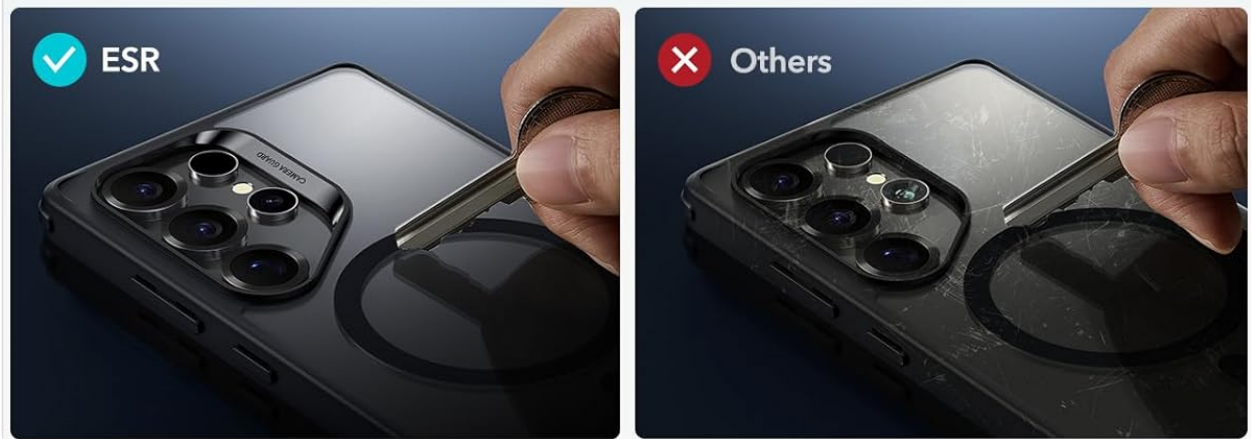


Image 2.4: Demonstration of the tough acrylic back's scratch resistance, ensuring a flawless look over time.

Video 2.1: An overview of the ESR MagSafe Case for Samsung Galaxy S25 Ultra, highlighting its features and design.

## 3. SETUP AND INSTALLATION

Installing your ESR HaloLock Classic Hybrid Case is a straightforward process. Ensure your Samsung Galaxy S25 Ultra is clean and free of dust before installation to prevent scratches.

### 3.1. Case Installation

1. Hold your Samsung Galaxy S25 Ultra with the screen facing up.

2. Align the top edge of your phone with the top edge of the case.
3. Gently push the phone into the case, ensuring all corners snap securely into place.
4. Verify that all buttons and port cutouts align correctly with your device.

### 3.2. Compatibility Check

This case is exclusively designed for the Samsung Galaxy S25 Ultra. It is not compatible with the Samsung Galaxy S25 or S25+ models.

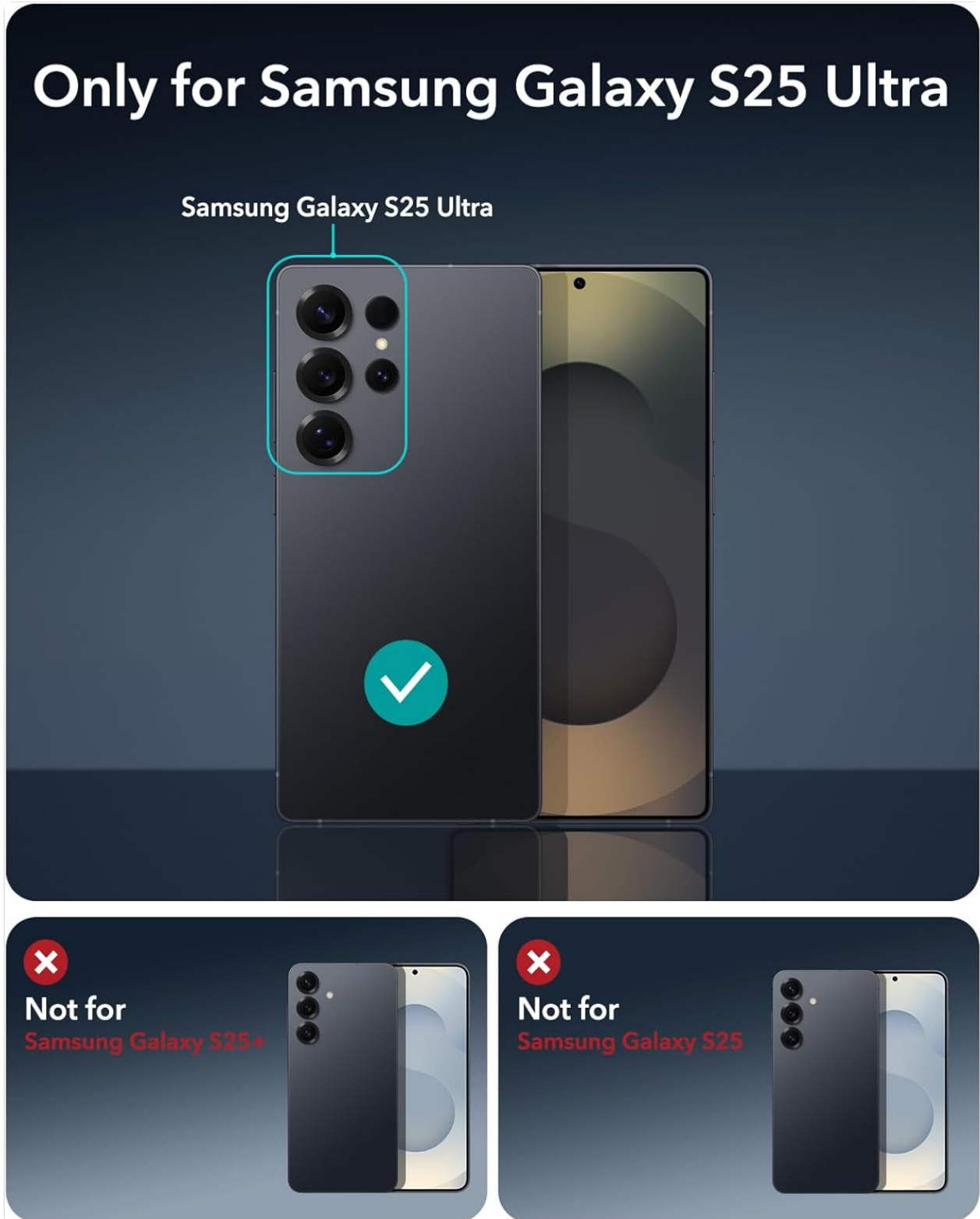


Image 3.1: Diagram illustrating the exclusive compatibility of the case with the Samsung Galaxy S25 Ultra, showing non-compatibility with S25 and S25+ models.

Video 3.1: A step-by-step guide on how to properly install the ESR case onto your Samsung Galaxy S25 Ultra.

## 4. OPERATING INSTRUCTIONS

### 4.1. MagSafe Compatibility

The ESR HaloLock Classic Hybrid Case features a powerful magnetic ring that enables seamless compatibility with MagSafe accessories. Simply align your MagSafe charger, wallet, or car mount with the magnetic ring on the back of the case for a secure and efficient connection.



Image 4.1: The ESR case on a Samsung Galaxy S25 Ultra with a MagSafe wireless charger securely attached to the magnetic ring.

# Qi2 Ready for Ease and Versatility

Built-in magnetic ring lets you attach a variety of magnetic accessories



Image 4.2: A Samsung Galaxy S25 Ultra in its ESR HaloLock case mounted on a car vent, demonstrating secure MagSafe attachment.

## 4.2. Wireless Charging

The case supports fast and efficient wireless charging. Ensure your wireless charger is compatible with your Samsung Galaxy S25 Ultra. The integrated magnetic ring ensures optimal alignment for consistent charging.

Video 4.1: A demonstration confirming the case's compatibility specifically for the Samsung Galaxy S25 Ultra, ensuring proper fit and function.

## 5. MAINTENANCE

---

## 5.1. Cleaning Your Case

To keep your ESR HaloLock Classic Hybrid Case looking its best, regularly wipe it with a soft, damp cloth. Avoid using harsh chemicals or abrasive materials, as these can damage the case's finish and clarity.

## 5.2. Yellowing Resistance

The clear acrylic back of your case is designed with yellowing-resistant properties to maintain its transparency over time. Proper cleaning and avoiding prolonged exposure to direct sunlight can further extend its pristine appearance.

# 6. TROUBLESHOOTING

---

## 6.1. Case Not Fitting Properly

Ensure you have the correct model (Samsung Galaxy S25 Ultra). Remove and re-install the case, making sure all corners are securely snapped into place. Check for any debris between the phone and the case that might prevent a proper fit.

## 6.2. MagSafe Accessories Not Attaching Securely

Verify that the MagSafe accessory is properly aligned with the magnetic ring on the case. Ensure there are no foreign objects or excessive dust on the magnetic surfaces of either the case or the accessory.

## 6.3. Buttons Are Stiff or Unresponsive

The case's buttons are designed for easy pressing. If they feel stiff, ensure the case is correctly seated on the phone and not misaligned. Over time, the buttons should become more responsive with regular use.

# 7. SPECIFICATIONS

---

| Feature                 | Specification  |
|-------------------------|--|
| Brand                   | ESR  |
| Compatible Phone Models | Samsung Galaxy S25 Ultra   |
| Color                   | Clear Black  |
| Material                | Acrylic, Polycarbonate, Thermoplastic Polyurethane   |
| Water Resistance Level  | Not Water Resistant  |
| Additional Features     | Air Guard corners, Anti-Yellowing, Slim Fit, Strong MagSafe lock, Wireless Charging Compatible |
| Form Factor             | Basic Case   |
| Item Weight             | 1.6 ounces   |
| Item Dimensions         | 6.56 x 3.28 x 0.58 inches  |

# 8. WARRANTY & SUPPORT

---

## **8.1. Warranty Information**

Your ESR HaloLock Classic Hybrid Case comes with a comprehensive 12-month protection plan from the manufacturer. This warranty covers defects in materials and workmanship under normal use.

## **8.2. Lifetime Support**

ESR is committed to providing lifetime support for its products. Should you encounter any issues or have questions, our dedicated support team is available to assist you.

## **8.3. Contact Support**

For personalized help, detailed setup videos, and FAQs, please visit the official ESR website or contact our customer service team directly. You can find contact information on the product packaging or through the ESR brand store on Amazon.