



Manuals.plus /

› Hocosyme /

› Hocosyme T-WK-600W-S1 Infrared Heating Panel User Manual

Hocosyme T-WK-600W-S1

Hocosyme T-WK-600W-S1 Infrared Heating Panel User Manual

1. INTRODUCTION

This manual provides essential information for the safe and efficient operation of your Hocosyme T-WK-600W-S1 Infrared Heating Panel. Please read all instructions carefully before installation and use, and retain this manual for future reference.

The Hocosyme Infrared Heating Panel utilizes graphene material for far-infrared heating, designed to provide warmth for indoor spaces. This model features a programmable thermostat and is suitable for wall-mounted installation.

2. SAFETY INFORMATION

Your safety is paramount. Please adhere to the following guidelines:

- **Electrical Safety:** Ensure the heater is connected to a properly grounded outlet. Do not overload electrical circuits. Avoid using extension cords unless absolutely necessary and ensure they are rated for the heater's wattage.
- **Placement:** Maintain a minimum distance of 12 inches (30 cm) from the heater to any combustible materials (e.g., curtains, furniture, bedding). Do not place the heater directly below an electrical outlet.
- **Overheating Protection:** The heater is equipped with double overheating protection. If the unit overheats, it will automatically shut off. Do not cover the heater at any time, as this can lead to overheating and fire hazards.
- **Material:** The heating panel is constructed from 100% flame-retardant material for enhanced safety.
- **Children and Pets:** Keep children and pets away from the heater. The surface can become hot during operation.
- **Moisture:** This appliance is for indoor use only. Do not use in bathrooms or other damp environments where it may come into contact with water.
- **Maintenance:** Always unplug the heater before cleaning or performing any maintenance.

3. PRODUCT OVERVIEW

The Hocosyme Infrared Heating Panel is designed for efficient and healthy indoor heating. It utilizes graphene electric heating technology to provide rapid warmth without air circulation, which is beneficial for individuals with allergies or rheumatism.



Figure 1: Hocosyme Infrared Heating Panel and Wireless Thermostat.

Key Features:

- **Graphene Electric Heating:** High thermal energy conversion for super energy-saving operation.
- **Healthy Heating:** Infrared heat does not create air circulation, reducing dust movement.
- **Smart Thermostat:** Features 3 modes, 10m remote control range, and temperature adjustment buttons.
- **Minimalist Design:** High-quality powder-coated aluminum frame allows for discreet wall mounting.
- **Safety:** 100% flame-retardant material, IP54 rated, with double overheating protection.

Heating Technology:

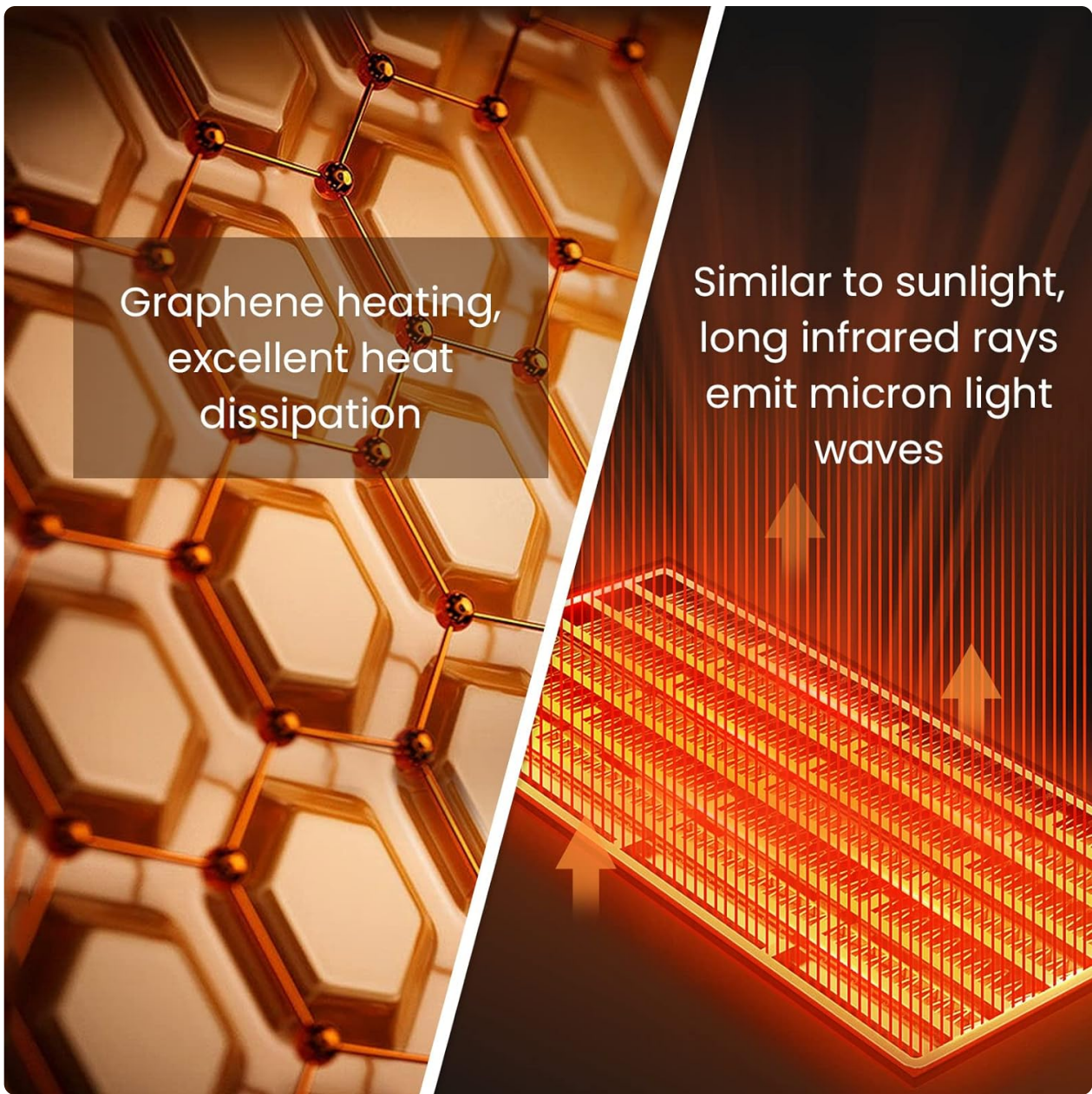


Figure 2: Illustration of graphene heating and emission of long infrared rays.

The panel utilizes graphene material to emit long infrared rays, similar to natural sunlight, providing direct and efficient warmth.



Figure 3: The graphene electric heating technology allows the panel to heat up rapidly.

Suitable Room Types:

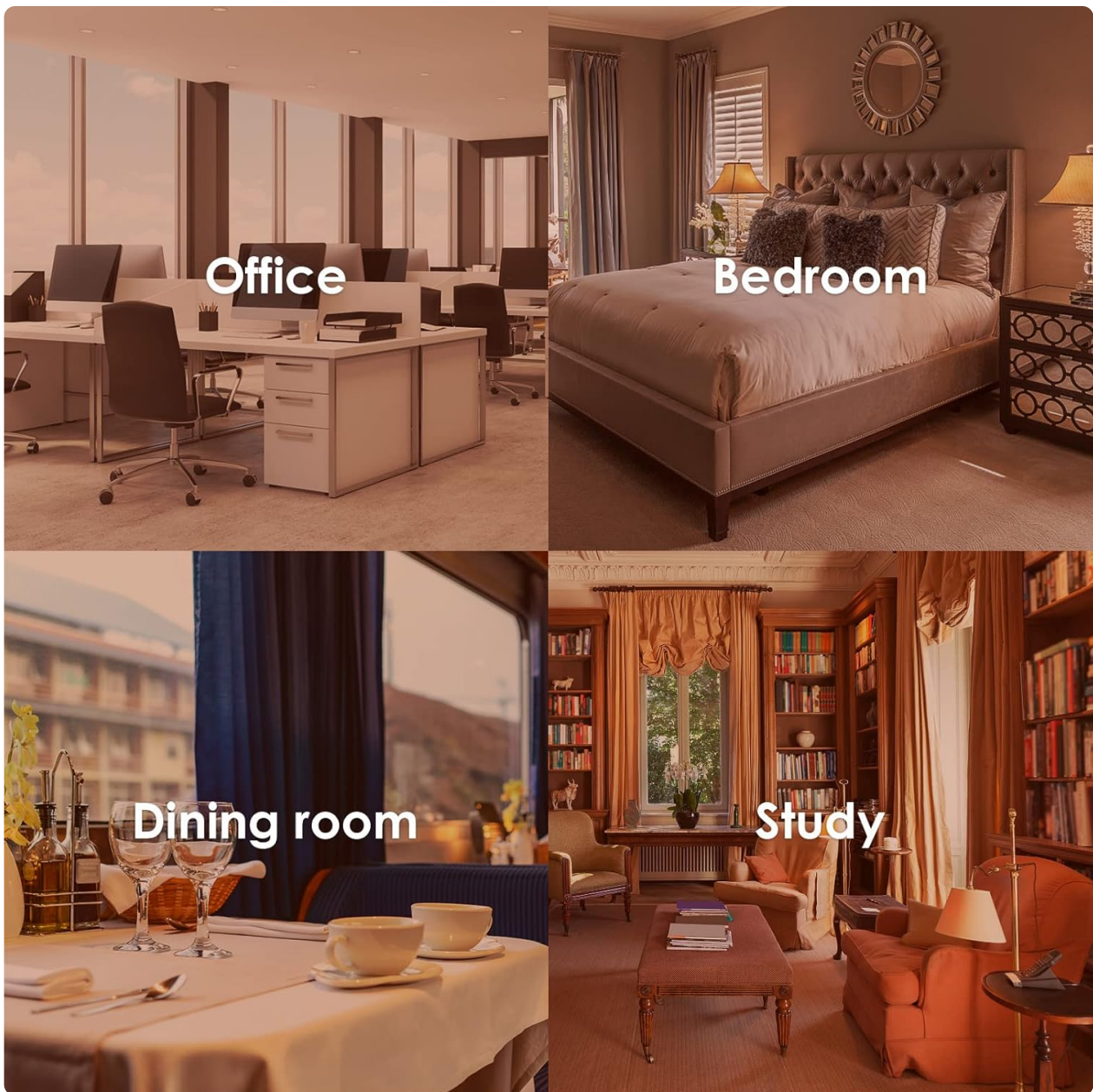


Figure 4: The heater is suitable for various indoor spaces including bedrooms, living rooms, study rooms, and offices.

4. SETUP & INSTALLATION

The Hocosyme Infrared Heating Panel offers flexible installation options: wall-mounted or with optional roller bracket support (sold separately).

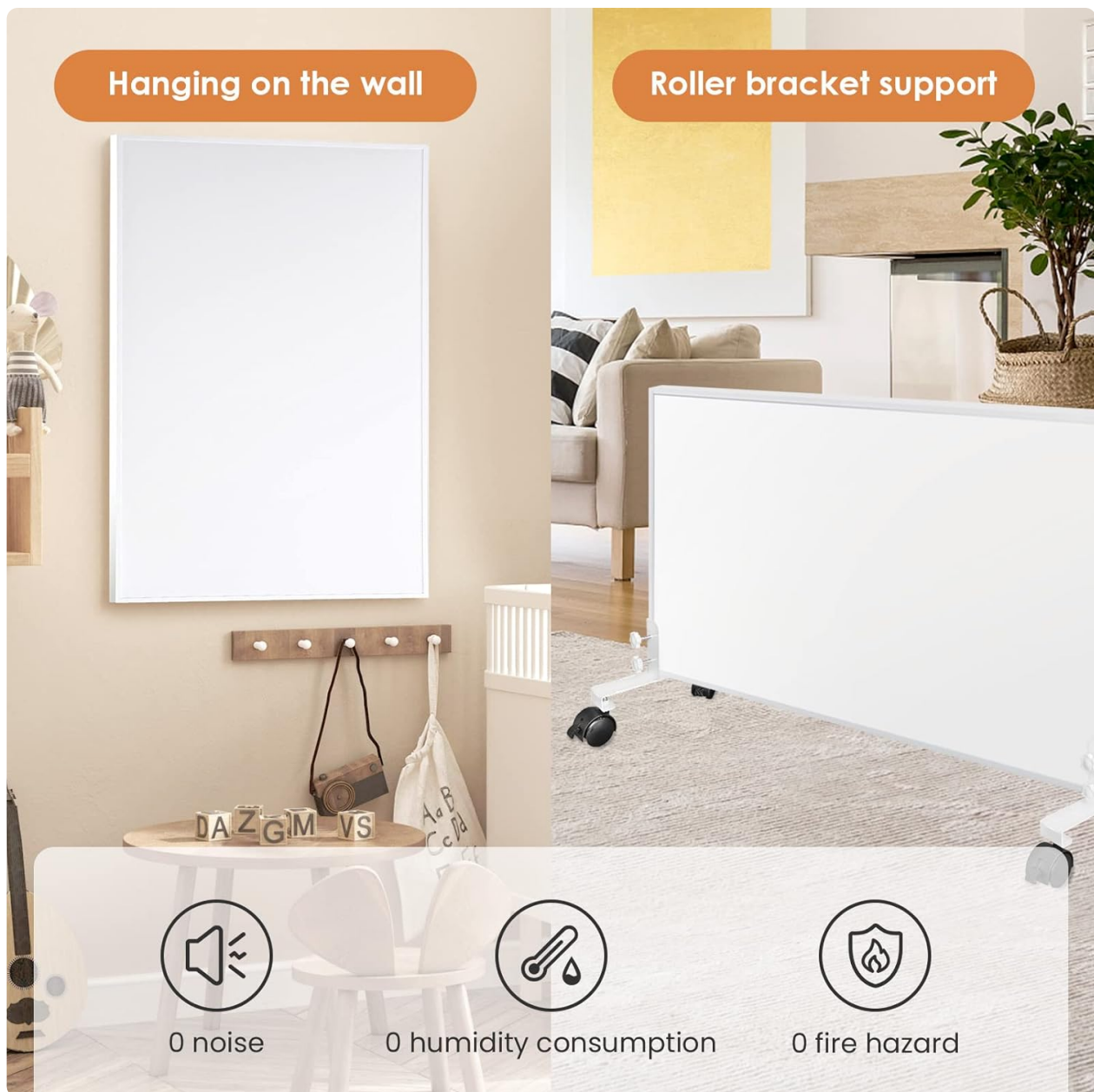


Figure 5: The heating panel can be hung on the wall or supported by a roller bracket (not included).

Wall Mounting:

The panel comes with high-quality installation materials for secure wall mounting.

High-quality installation materials and strongly fixed holes can be safely installed on the wall



Figure 6: Wall mounting hardware (screws and anchors) and keyhole slots for installation.

1. Select a suitable location on the wall, ensuring adequate clearance from combustible materials (minimum 12 inches).
2. Use the provided template (if available) or measure and mark the positions for the mounting screws.
3. Drill pilot holes at the marked positions.
4. Insert the wall anchors into the pilot holes.
5. Screw the mounting screws into the anchors, leaving a small portion of the screw head exposed to hang the panel.
6. Carefully align the keyhole slots on the back of the heating panel with the exposed screw heads and slide the panel down to secure it.
7. Ensure the power cord is routed safely and plugged into a grounded outlet.

5. OPERATING INSTRUCTIONS

The heating panel is controlled via a wireless thermostat. Ensure the thermostat has working batteries (2x AAA, not included) and is paired with the heating panel.

Wireless Thermostat:

The wireless thermostat allows you to set the desired temperature and choose between different heating modes.

- **Power On/Off:** Use the power button on the thermostat to turn the heater on or off.

- **Temperature Adjustment:** Use the '+' and '-' buttons to increase or decrease the target temperature.
- **Heating Modes:** The thermostat offers 3 modes. Press the 'M' button to cycle through the modes (e.g., Comfort, Eco, Anti-frost).
- **Timer Function:** Set a 7x24 timer to program heating schedules according to your needs.

6. MAINTENANCE

Regular maintenance ensures the longevity and optimal performance of your heating panel.

- **Cleaning:** Always unplug the heater before cleaning. Use a soft, dry cloth to wipe the surface of the panel. Do not use abrasive cleaners or solvents.
- **Dust Accumulation:** As an infrared heater, it does not circulate air, minimizing dust accumulation. However, occasional dusting is recommended.
- **Storage:** If storing the heater for an extended period, ensure it is clean and completely cooled down. Store it in a dry, safe place.

7. TROUBLESHOOTING

If you encounter issues with your heating panel, refer to the following common troubleshooting steps:

- **Heater Not Turning On:**
 - Check if the power cord is securely plugged into a grounded outlet.
 - Ensure the wireless thermostat has fresh batteries and is properly paired with the heater.
 - Verify that the master power switch (if any) on the heater itself is in the 'On' position.
- **No Heat Output:**
 - Confirm that the target temperature on the thermostat is set higher than the current room temperature.
 - Check if the heater has entered an overheat protection state. Unplug the heater, allow it to cool down, and then plug it back in.
- **Remote Control Issues:**
 - Replace the batteries in the wireless thermostat.
 - Ensure there are no obstructions between the thermostat and the heating panel.
 - If the remote loses connection after unplugging the unit, remove batteries for 2 minutes, replace them, turn the panel on, then press '+' and '-' buttons on the remote to re-pair.

8. SPECIFICATIONS

Feature	Detail
Brand	Hocosyme
Model Number	T-WK-600W-S1
Power Consumption	600W
Product Dimensions	19"D x 0.88"W x 35"H
Item Weight	12 pounds
Mounting Type	Wall Mount
Special Feature	Programmable Thermostat
Fuel Type	Electric
Indoor/Outdoor Usage	Indoor
Voltage	230 Volts (AC)
Manufacture Year	2024

9. WARRANTY & SUPPORT

The Hocosyme Infrared Heating Panel is backed by a 10-year manufacturer's warranty. This warranty covers defects in materials and workmanship under normal use. Additionally, the product is TÜV and GS certified, and infrared heating is IP54 rated.

For customer support, warranty claims, or technical assistance, please refer to the contact information provided in your product packaging or visit the official Hocosyme website.

If damaged within one year, it will be replaced with a new one immediately.