



[Manuals.plus](#) /

> [HP](#) /

> HP 14 inch Laptop User Manual

## HP EP01

# HP 14 inch Laptop User Manual

Model: EP01

## INTRODUCTION

This manual provides essential information for setting up, operating, maintaining, and troubleshooting your HP 14 inch Laptop. Please read this guide thoroughly to ensure proper use and to maximize the performance and longevity of your device.

# Built for your life



Get lost in the crisp display with 84% screen-to-body ratio for enhanced viewing, plus plenty of ports to connect your devices.



Image: An HP 14 inch laptop being used by a person on a kitchen counter, demonstrating its portability and suitability for various environments.

## 1. INITIAL SETUP

### 1.1 Unpacking and First Power On

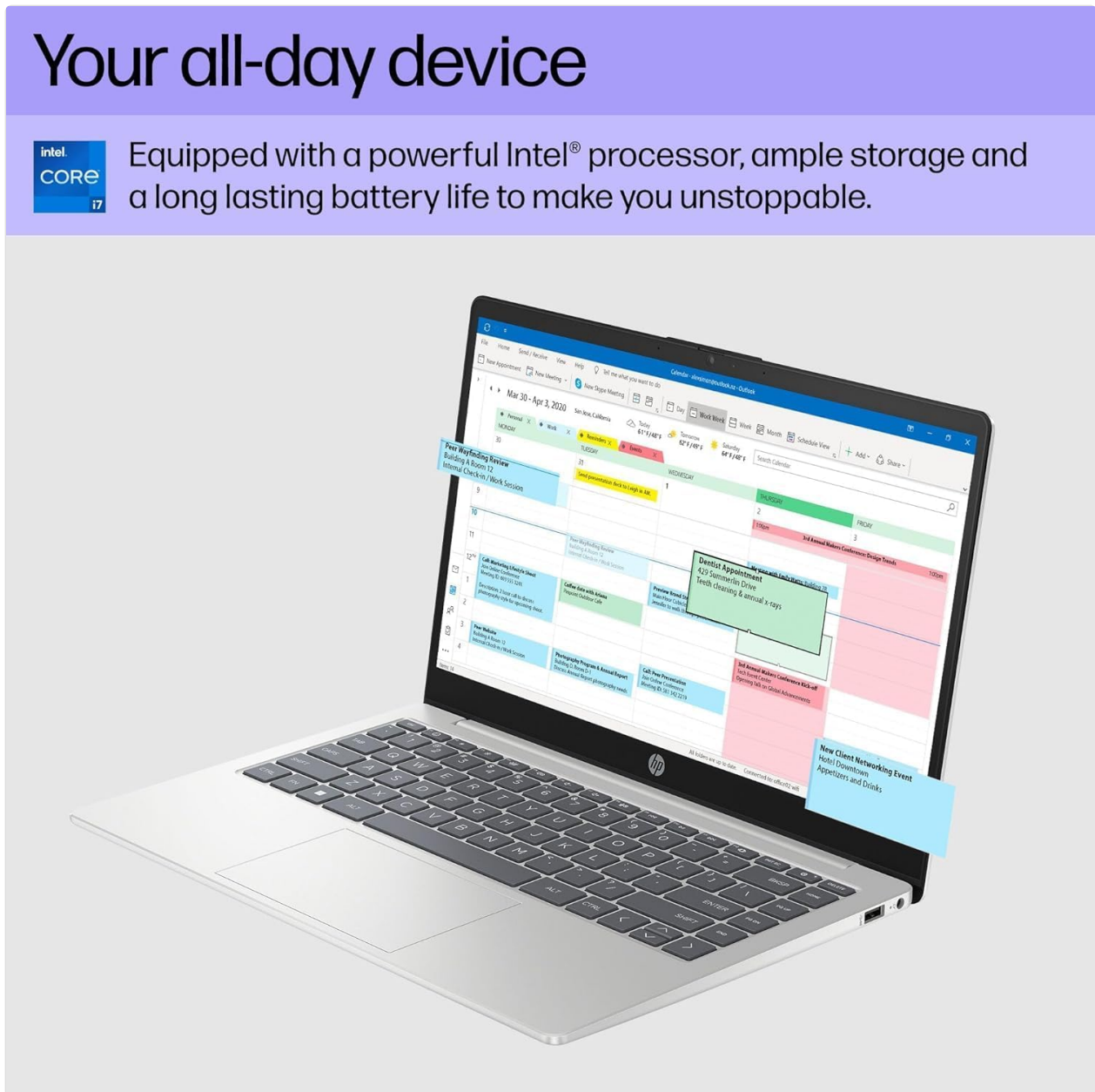
Carefully remove the laptop and all accessories from the packaging. Ensure all components are present:

- HP 14 inch Laptop
- Power Adapter
- Documentation

Connect the power adapter to the laptop's power port and then to a wall outlet. Press the power button to turn on the laptop. Follow the on-screen instructions to complete the initial Windows 11 setup, including language selection, network connection, and user account creation.

## 1.2 Connecting Peripherals

Your laptop is equipped with various ports for connecting external devices:



Equipped with a powerful Intel® processor, ample storage and a long lasting battery life to make you unstoppable.

Image: Side view of the HP 14 inch laptop, highlighting the various ports available for connecting peripherals such as USB devices and external displays.

- **USB 3.2 Gen 1 Type-C (5Gbps):** For connecting modern USB-C devices.
- **USB 3.2 Gen 1 Type-A (2x, 5Gbps):** For standard USB devices like mice, keyboards, and external drives.
- **HDMI v1.4:** For connecting to external displays or projectors.
- **Headphone/Microphone Combo Jack:** For audio input/output devices.

Simply plug the peripheral's cable into the corresponding port on the laptop. Most devices are plug-and-play and will be recognized automatically by Windows 11.

## 2. OPERATION

## 2.1 Basic Usage

The laptop features a standard keyboard and a responsive touchpad for navigation. Familiarize yourself with the function keys (Fn) for quick access to settings like volume, brightness, and Wi-Fi.

## 2.2 Connecting to Networks (Wi-Fi)

Your laptop supports Wi-Fi 6 for fast wireless connectivity. To connect to a Wi-Fi network:

1. Click the Wi-Fi icon in the taskbar (usually bottom-right).
2. Select your desired network from the list.
3. Enter the network security key (password) if prompted.
4. Click "Connect".

## 2.3 Bluetooth Device Pairing

The laptop includes Bluetooth 5.3 for connecting wireless accessories. To pair a Bluetooth device:

1. Go to **Settings > Bluetooth & devices**.
2. Ensure Bluetooth is turned **On**.
3. Click **Add device** and select **Bluetooth**.
4. Put your Bluetooth device into pairing mode.
5. Select your device from the list and follow any on-screen prompts.

## 2.4 Using the Webcam

The integrated 720p HD camera is suitable for video calls and conferences. For privacy, your laptop features a physical privacy shutter. Slide the shutter to cover or uncover the camera lens as needed.

# Be seen. Be heard. On your terms.



A camera shutter you can close helps keep you safe online.

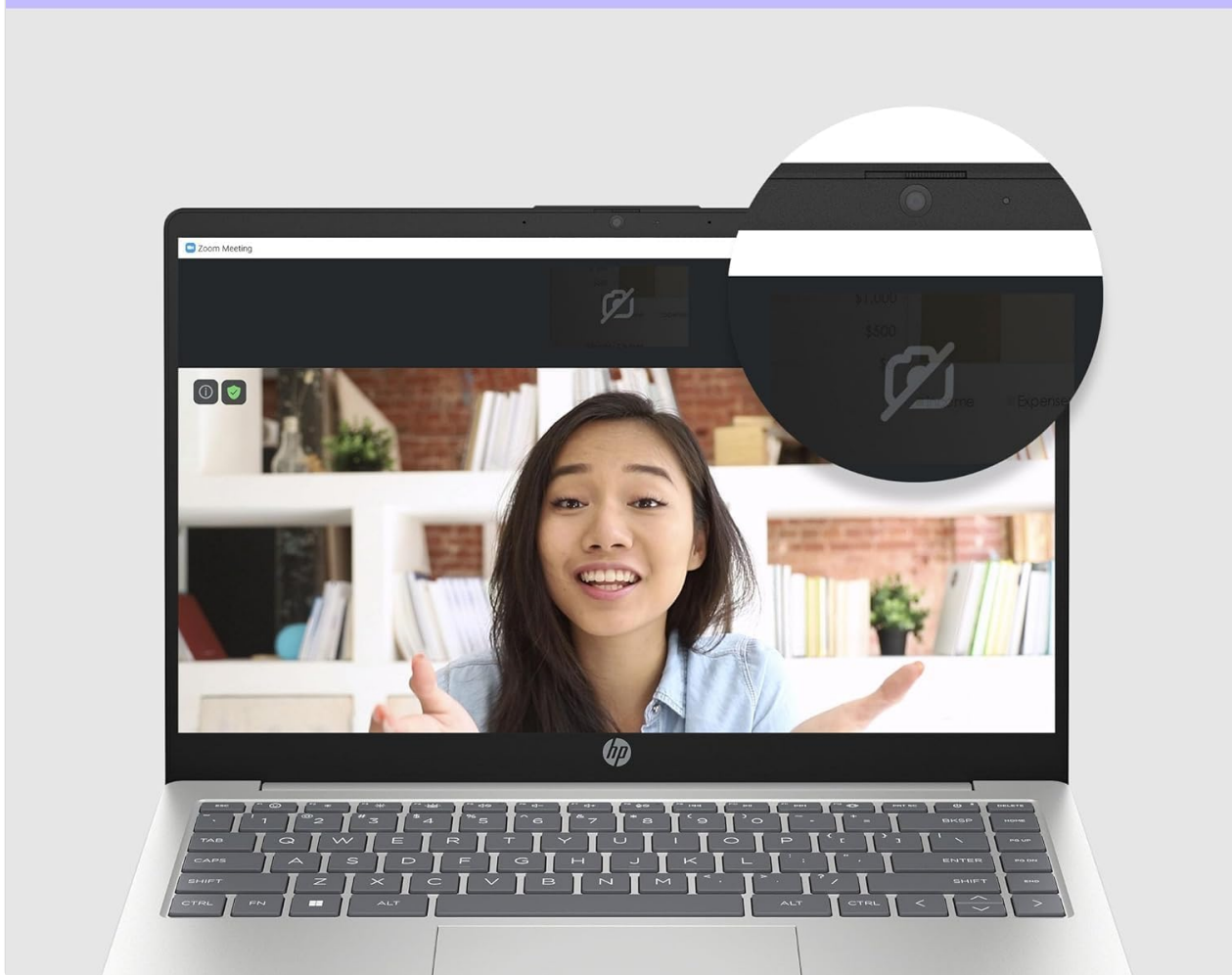
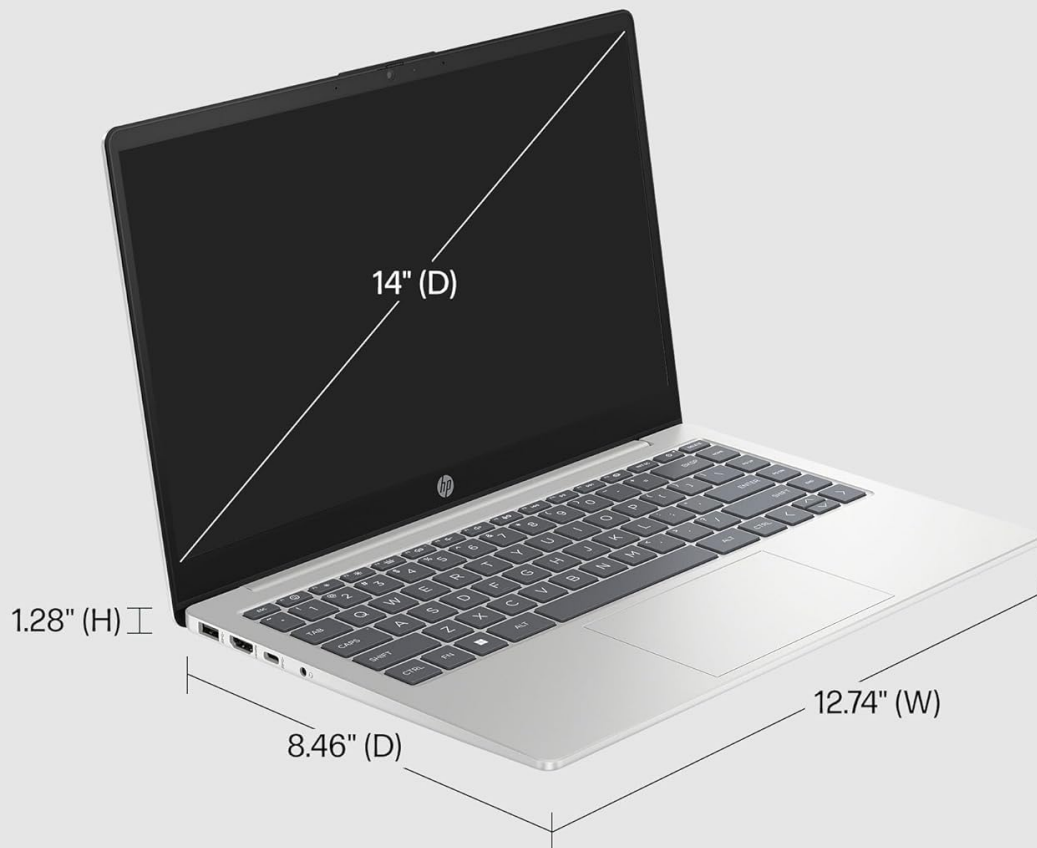


Image: Close-up of the HP laptop's integrated webcam, showing the physical privacy shutter in the open position. This feature allows users to physically block the camera lens for enhanced privacy.

## 2.5 Battery Management

The laptop is equipped with a 3-cell 41Wh battery, providing up to 8 hours of non-gaming battery life. To optimize battery longevity:

- Avoid fully discharging the battery frequently.
- Keep the laptop in a cool, dry environment.
- Adjust screen brightness to a comfortable level.
- Utilize Windows power saving modes when on battery power.



Up to 8 hours mixed usage



3.09 lb

Image: Diagram illustrating the HP laptop's dimensions (14" display, 12.74" W, 8.46" D, 0.70" H) and indicating up to 8 hours of mixed usage battery life. This highlights the laptop's portability and endurance.

## 3. MAINTENANCE

### 3.1 Cleaning Your Laptop

Regular cleaning helps maintain your laptop's appearance and functionality:

- **Screen:** Use a soft, lint-free cloth lightly dampened with water or a screen cleaner. Avoid harsh chemicals.
- **Keyboard and Chassis:** Use a soft cloth. For stubborn dirt, a slightly dampened cloth with mild soap solution can be used, ensuring no liquid enters openings.
- **Ports:** Use compressed air to gently clear dust from ports.

### 3.2 Software Updates

Keep your Windows 11 operating system and drivers updated to ensure optimal performance and security. Windows Update typically handles this automatically, but you can manually check by going to **Settings > Windows Update**.

### 3.3 Storage and Memory Management

Your laptop is equipped with a 4TB NVMe M.2 SSD and 64GB DDR4 RAM. While these provide ample capacity, regular management is recommended:

- Periodically delete unnecessary files and applications to free up storage space.
  - Utilize cloud storage for large files to reduce local drive usage.
  - Windows 11 includes tools like Storage Sense (in Settings > System > Storage) to automate cleanup.
- 

## 4. TROUBLESHOOTING COMMON ISSUES

### 4.1 Power Issues

- **Laptop not turning on:** Ensure the power adapter is securely connected to both the laptop and a working power outlet. Try a different outlet.
- **Battery not charging:** Verify the power adapter connection. Check for any damage to the adapter or cable.

### 4.2 Display Problems

- **No image on screen:** If connected to an external monitor, ensure the correct input source is selected on the monitor. Try pressing **Fn + F4** (or the equivalent display toggle key) to switch display outputs.
- **Dim screen:** Adjust brightness using the function keys (e.g., **Fn + F2/F3**) or through Windows display settings.

### 4.3 Connectivity Issues (Wi-Fi/Bluetooth)

- **Cannot connect to Wi-Fi:** Ensure Wi-Fi is enabled in Windows settings. Restart your router and the laptop. Check if other devices can connect to the network.
- **Bluetooth device not pairing:** Ensure the Bluetooth device is in pairing mode and within range. Restart Bluetooth on the laptop and the device.

For more detailed troubleshooting or persistent issues, refer to the HP support website or contact customer service.

---

## 5. SPECIFICATIONS

Detailed technical specifications for your HP 14 inch Laptop (Model EP01):

# HP 14" Laptop



Big time powerful. Totally practical. Perfectly priced.







<p>PROCESSOR</p>  <p>13th Gen Intel® Core™ i7-1355U</p>	<p>MEMORY</p>  <p>16GB DDR4-3200 MHz RAM (2 x 8 GB)</p>	<p>STORAGE</p>  <p>1 TB PCIe® NVMe™ M.2 SSD</p>
<p>GRAPHICS</p>  <p>Intel® Iris® Xe</p>	<p>OPERATING SYSTEM</p>  <p>Windows 11 Home</p>	<p>DISPLAY</p>  <p>Full HD IPS, anti-glare</p>

Image: Infographic detailing key specifications of the HP 14 inch laptop, including 13th Gen Intel Core i7-1355U processor, 16GB DDR4-3200 MHz RAM, 1TB PCIe NVMe M.2 SSD, Intel Iris Xe Graphics, Windows 11 Home, and a Full HD IPS anti-glare display.

Feature	Specification
Brand	HP
Model Name	14 inch Laptop (EP01)
Processor	13th Generation Intel Core i7-1355U (10 Cores, up to 5.0GHz)
Graphics	Intel Iris Xe Graphics (Integrated)
Memory (RAM)	64GB DDR4 3200 MHz SDRAM (Upgraded from 16GB)
Storage	4TB NVMe M.2 SSD (Upgraded from 1TB)
Display	14" FHD (1920 x 1080) IPS Anti-Glare, 300 nits, 45% NTSC, 60Hz
Operating System	Windows 11 Home

Connectivity	Wi-Fi 6 (2x2), Bluetooth 5.3
Ports	1x USB 3.2 Gen 1 Type-C, 2x USB 3.2 Gen 1 Type-A, 1x HDMI v1.4, 1x Headphone/Microphone Combo Jack
Camera	720p HD Camera with Privacy Shutter
Audio	Dual speakers
Battery	3 Cell 41Wh (Up to 8 hours non-gaming)
Dimensions (L x W x H)	12.74 x 8.46 x 0.70 inches
Weight	5.13 pounds
Color	Natural Silver
UPC	194850841057

---

## 6. WARRANTY AND SUPPORT

### 6.1 Product Warranty

Your HP laptop comes with a standard manufacturer's warranty. For specific details regarding coverage, duration, and terms, please refer to the warranty documentation included with your product or visit the official HP support website. The warranty typically covers defects in materials and workmanship under normal use.

### 6.2 Customer Support

For technical assistance, service, or further inquiries, please contact HP Customer Support:

- **Online Support:** Visit [support.hp.com](https://support.hp.com) for drivers, manuals, and troubleshooting guides.
- **Phone Support:** Refer to the contact information provided in your product's documentation for regional phone numbers.

When contacting support, please have your laptop's serial number and model number (EP01) ready.