



Manuals.plus /

› Bextgoo /

› Bextgoo 2K Dual-Lens Video Doorbell Camera (Model P10-Black) User Manual

Bextgoo P10

Bextgoo 2K Dual-Lens Video Doorbell Camera (Model P10-Black) User Manual

Comprehensive instructions for setup, operation, and maintenance.

1. INTRODUCTION

The Bextgoo 2K Dual-Lens Video Doorbell Camera provides advanced home security with its innovative dual-lens design, offering comprehensive coverage of your doorstep. Featuring a powerful 10000mAh battery, flexible installation options, and smart detection capabilities, this doorbell ensures you stay connected and secure. This manual will guide you through the setup, operation, and maintenance of your device.

Key Features:

- **Dual-Lens Coverage:** 2K front-facing camera and 2MP downward-facing camera for complete top-to-bottom view.
- **170° Wide Field of View:** Expansive coverage to eliminate blind spots.
- **10000mAh Battery:** Long-lasting power with flexible wired or wireless installation.
- **AI Motion & Package Detection:** Accurate alerts for people and packages.
- **Two-Way Audio:** Remote communication with visitors.
- **Night Vision:** Sharp video in any lighting conditions.
- **Secure Storage:** Local MicroSD card support (up to 128GB, not included) and lifetime free cloud storage (6s Event Video & 7 days loop coverage).
- **Smart Home Integration:** Compatible with Google Home and Alexa.
- **IP67 Waterproof:** Reliable performance in all weather conditions.

2. PACKAGE CONTENTS

Verify that all components are present in your package:

- Video Doorbell
- USB Chime
- Screw Pack
- USB Charging Cable
- User Manual

Your browser does not support the video tag.

Video: This video demonstrates the unboxing and shows all included components of a similar video doorbell. Please refer to your specific package contents list.

3. SETUP

3.1 Charging the Doorbell

Before first use, fully charge the doorbell. A full charge from empty typically takes about 5 hours. Use the provided USB Charging Cable to connect the doorbell to a power source.

Larger Battery Capacity, Longer Battery Life

The graphic compares two doorbell models. On the left, the Bextgoo doorbell is shown with a large, glowing blue battery compartment. A large blue arrow points to the text '10000mAh' written vertically. Below the doorbell, a blue box contains the text '10000mAh Larger Capacity'. On the right, a smaller doorbell is shown in a greyed-out box labeled 'Others'. A smaller battery compartment is visible, with the text '5600mAh' written vertically next to it. Below this doorbell, a grey box contains the text '5600mAh Smaller Capacity'. A large blue 'VS' is placed between the two doorbells.

Image: The Bextgoo doorbell features a large 10000mAh battery for extended use.

3.2 App Connection & MicroSD Card Installation

Download the companion app (e.g., CloudEdge, as indicated in specifications) from your smartphone's app store. Follow the in-app instructions to pair your doorbell. Ensure your WiFi is 2.4GHz, as the doorbell only supports this frequency. For local storage, insert a MicroSD card (up to 128GB, not included) into the designated slot on the doorbell. This allows for continuous recording without subscription fees.

Multiple Storage Options

1

No Subscription Fees

Local Storage

Up to 128GB (Not Included)



2

Premium Cloud Storage

Video Encryption



Image: The doorbell supports local storage via MicroSD card and offers cloud storage options.

3.3 Mounting Options & Location

The Bextgoo doorbell offers flexible installation: choose wireless for battery operation or connect to a wired power source for 24/7 monitoring. It is recommended to install the doorbell approximately 5 ft (1.5m) above the ground for optimal coverage. Install on non-metallic surfaces to avoid signal interference. The wall next to the door is recommended.

100% Wire-free OR Simple Hardwired

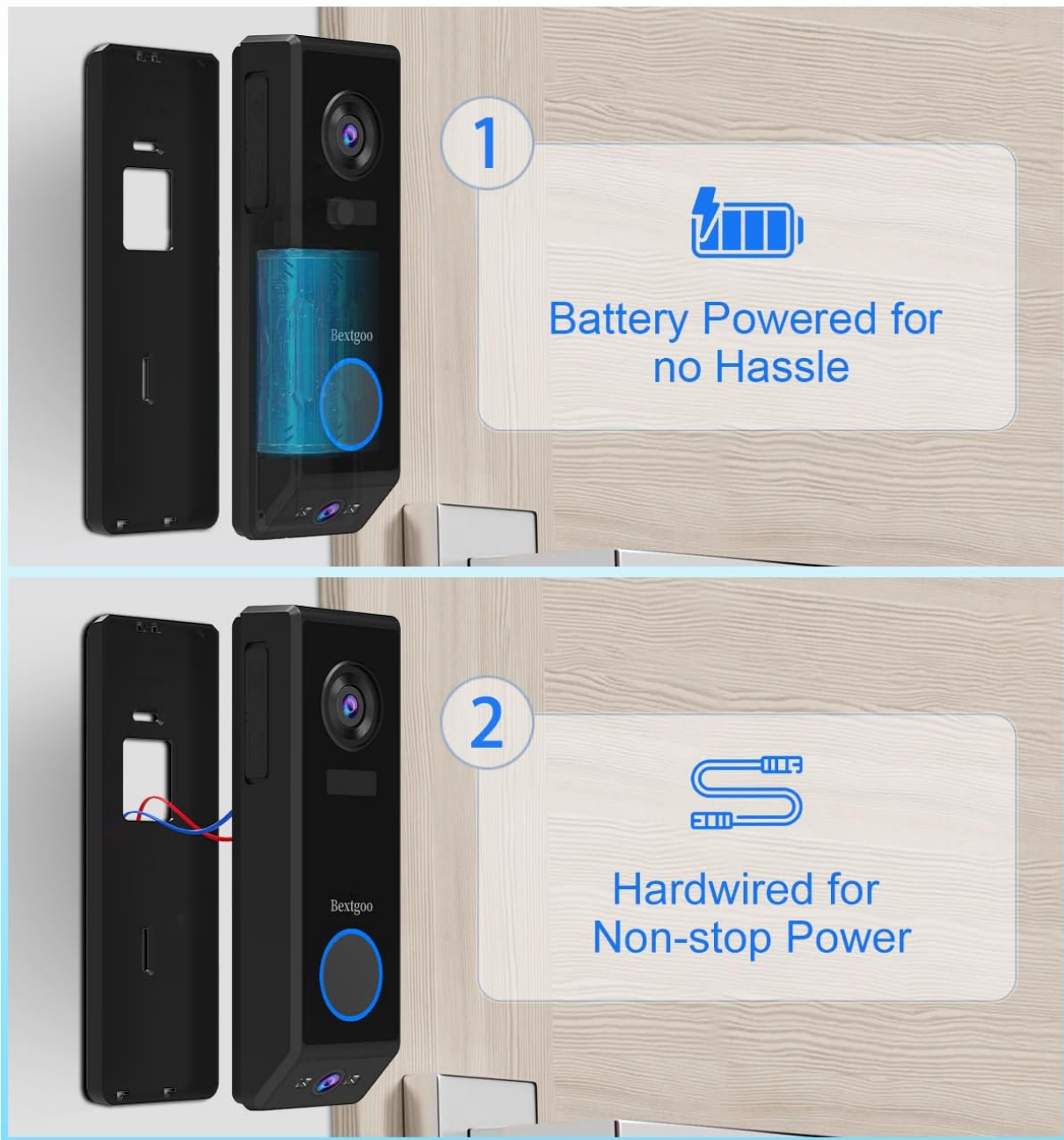


Image: Choose between 100% wire-free (battery-powered) or simple hardwired installation for non-stop power.

Your browser does not support the video tag.

Video: This video provides a general guide on how to install a doorbell camera, including placement considerations.

4. OPERATING INSTRUCTIONS

4.1 Dual-Lens Coverage & Wide View

The doorbell features a 2K front-facing camera to identify visitors clearly and a 2MP downward-facing camera to monitor packages and ground activity. The 170° wide field of view provides expansive coverage, eliminating blind spots.

Dual Lens | 2K FHD Upper 1080P HD Lower



Image: Experience all-around doorstep security with dual-lens coverage.

4.2 AI Motion Detection & Alerts

The dual-lens detection accurately identifies people and packages, sending instant alerts to your phone when motion is detected or the doorbell is pressed. Advanced image processing ensures sharp video day and night.

Dual Lens | See the Face Check the Floor

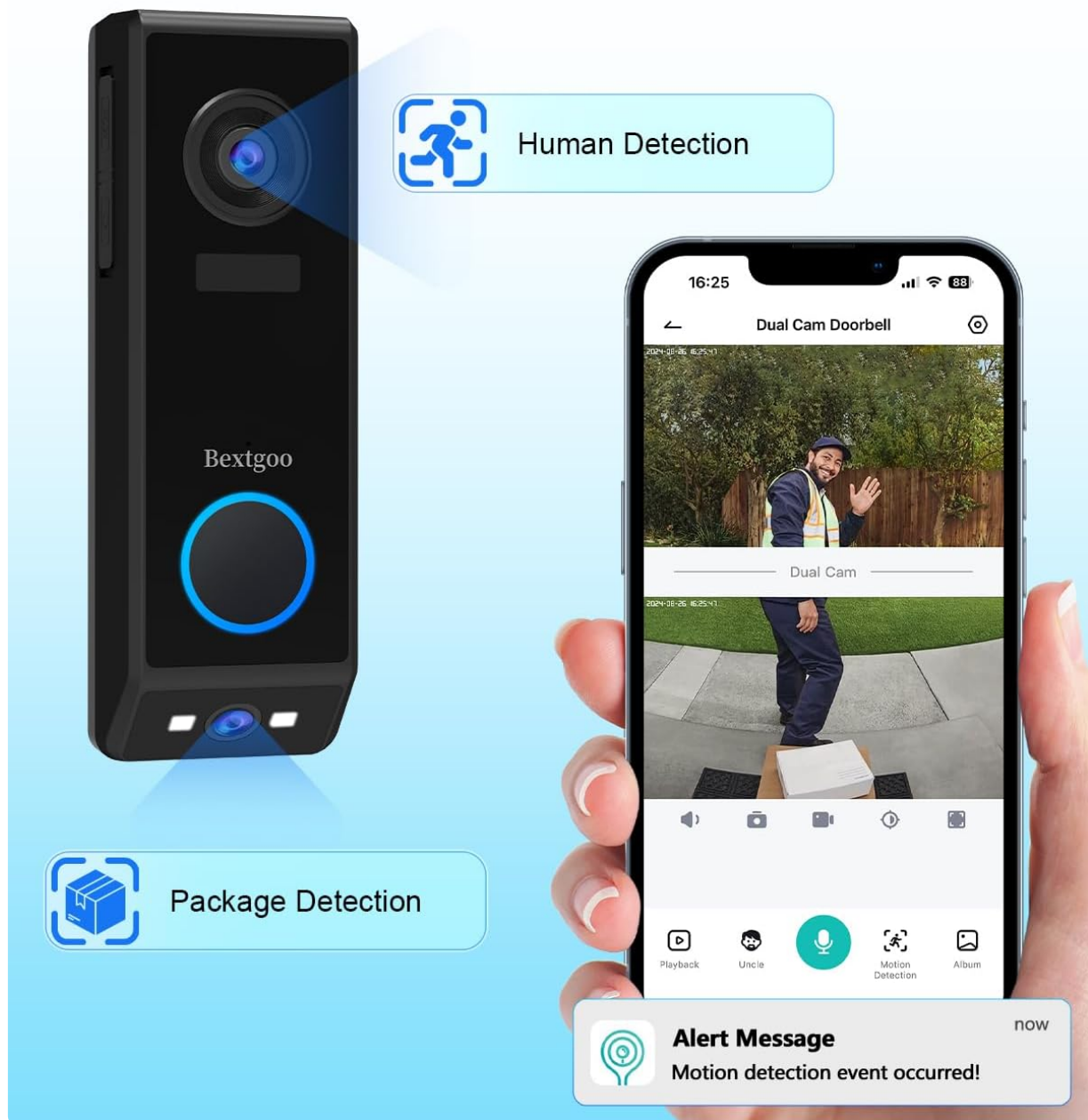


Image: Dual-lens detection provides superior security with human and package detection.

4.3 Two-Way Audio & Pre-recorded Responses

Communicate remotely with visitors using the two-way audio feature. You can also use pre-recorded responses to greet visitors even when you're busy, ensuring you never miss an important interaction.

Talk to Visitors Remotely, Use Voice Changer for Privacy

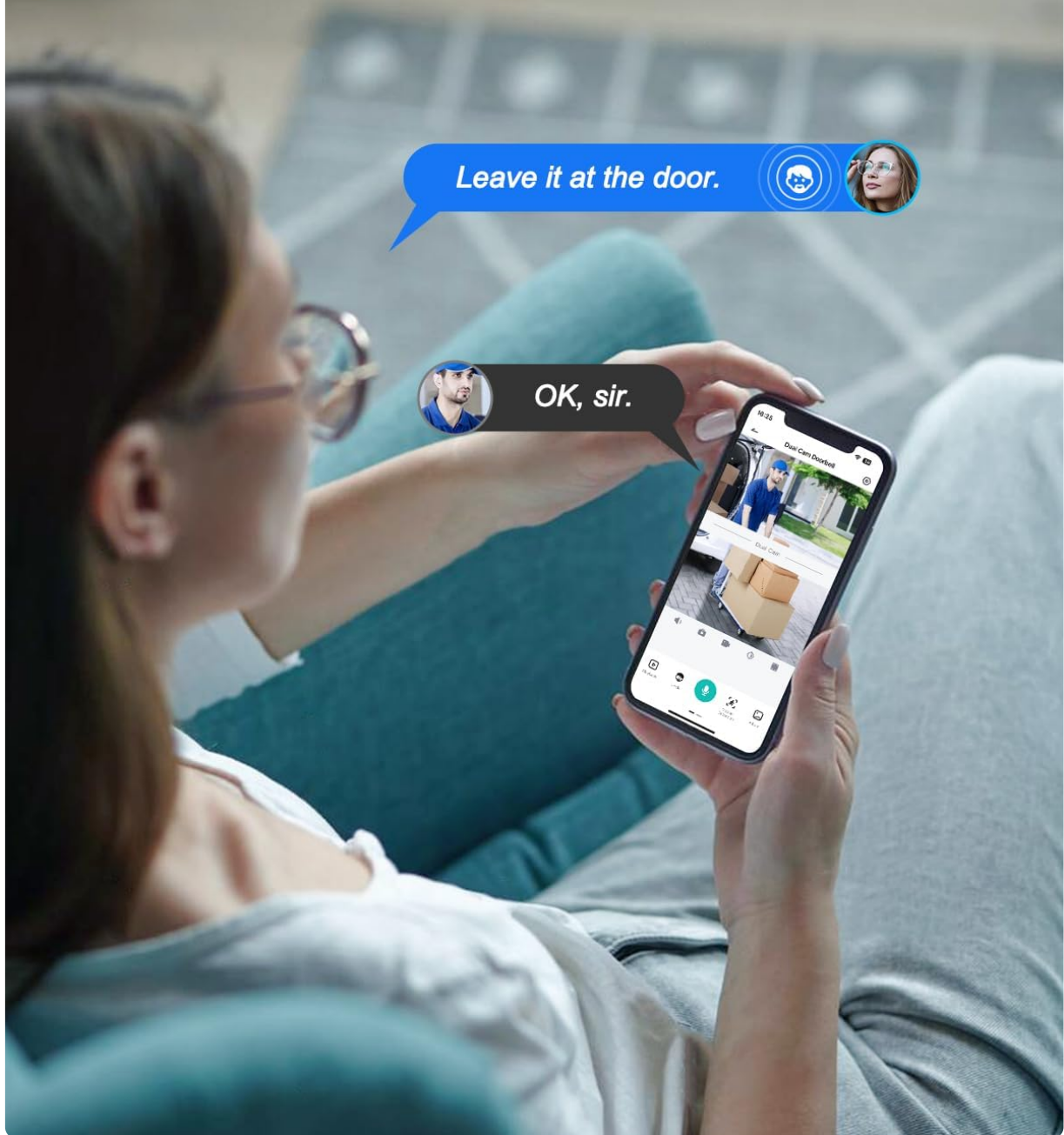


Image: Talk to visitors remotely and use voice changer for privacy.

4.4 Night Vision

The doorbell is equipped with advanced image processing for sharp video quality in any lighting, including night vision up to 15 meters.

Your browser does not support the video tag.

Video: This video demonstrates various view modes, including night vision, for a similar doorbell camera.

4.5 Secure Storage & Smart Home Integration

Enjoy secure storage with no monthly fees. Choose between local storage with a MicroSD card (up to 128GB, not included) or utilize the lifetime free cloud storage for 6-second event videos with 7-day loop coverage. Your data is protected by AES128 encryption. The doorbell integrates seamlessly with Google Home and Alexa for easy control and real-time viewing.

5. MAINTENANCE

- **Battery Charging:** For battery-operated installations, regularly monitor the battery level via the app and recharge as needed using the USB-C cable.
- **Cleaning:** Periodically clean the camera lenses and the doorbell's exterior with a soft, damp cloth to ensure clear image quality and optimal performance.
- **Firmware Updates:** Check the companion app regularly for firmware updates to ensure your doorbell has the latest features and security enhancements.

6. TROUBLESHOOTING

- **Connectivity Issues:** Ensure your WiFi network is 2.4GHz. If experiencing connection drops, check your router's proximity and signal strength.
- **False Alarms:** Adjust the motion detection sensitivity settings within the app to reduce unwanted alerts from pets or environmental factors.
- **No Power:** For battery-operated units, ensure the battery is charged. For wired installations, verify the electrical connection to your existing doorbell wiring.
- **Poor Video Quality:** Check your WiFi signal strength. A weak signal can affect video resolution and streaming. Ensure lenses are clean.

7. SPECIFICATIONS

Feature	Detail
Mounting Type	Doorbell Mount
Video Capture Resolution	5MP (2K Front, 2MP Downward)
Colour	Black
Battery Capacity	10000mAh
Wireless Communication	Wi-Fi (2.4GHz only)
Viewing Angle	170 Degrees
Night Vision Range	15 Meters
Water Resistance Level	Waterproof (IP67)
Item Dimensions L x W x H	16.2 x 3 x 5.2 Centimetres
Item Weight	620 g
Model Name	P10-Black

8. WARRANTY & SUPPORT

The Bextgoo 2K Dual-Lens Video Doorbell Camera comes with a **3-Year Warranty**.

For technical support or any questions regarding your product, please contact Bextgoo customer service at: support@bextgoo.com.

