

Manuals.plus /

› VILTROX /

› VILTROX 28mm F4.5 E-Mount Ultra-Thin Pancake Lens Instruction Manual

VILTROX 28mm F4.5

VILTROX 28mm F4.5 E-Mount Ultra-Thin Pancake Lens Instruction Manual

Model: 28mm F4.5

1. INTRODUCTION

The VILTROX 28mm F4.5 E-Mount Ultra-Thin Pancake Lens is a compact and lightweight full-frame wide-angle lens designed for Sony E-mount cameras. It features autofocus capabilities and a unique toggle-opening cap design for convenience. This manual provides essential information for the proper setup, operation, and maintenance of your lens.



Image 1: VILTROX 28mm F4.5 E-Mount Ultra-Thin Pancake Lens.

2. KEY FEATURES

- **Extremely Thin & Lightweight:** With a diameter of 60.3mm, a thickness of 15.3mm, and a weight of only 60g, this lens is designed for portability.
- **Precision Autofocus (AF):** Equipped with an efficient and precise AF system for sharp and clear images.
- **Multi-Layer Coating:** Designed with multi-layer coating to minimize light interference.
- **Innovative Toggle-Opening Cap:** Features a built-in lens cap that opens with a toggle, eliminating concerns about losing the cap.
- **28mm Focal Length:** Offers a versatile wide-angle perspective, suitable for street and travel photography.
- **USB Upgrading Port:** Includes a USB-C port for firmware updates to ensure compatibility with evolving E-mount cameras.
- **Durable Construction:** Features a metal barrel for daily use and travel.

Lens Name Camera Model	AF 28/1.5 FE Camera Firmware Version	Lens Firmware Version Photo Mode	V.I.O.3 Video mode
	a7	v3.20	Partially Compatible
	a7R	v3.20	Partially Compatible
	a7S	v3.20	Partially Compatible
	a7C	v2.00	Compatible
	a7 II	v4.01	Compatible
	a7R II	v4.01	Partially Compatible
	a7S II	v3.01	Partially Compatible
	a7S III	v3.02	Compatible
	a7 III	v4.01	Compatible
	a7R III	v3.10	Compatible
	a7IV	v4.00	Compatible
	a7RIV	v1.20	Compatible
	a9	v6.00	Compatible
	a9 II	v3.20	-
	A1	v2.02	Compatible
	FX3	v6.00	Compatible
	FX6	v5.02	-
	A7R V	v3.00	Compatible
	ZVE1	v2.00	Compatible
	A7C2	v1.02	Compatible
	A7CII	v1.02	Compatible
	A93	2.01	Compatible
	a5000	v1.10	-
	a5100	v3.10	Partially Compatible
	a6000	v3.21	Partially Compatible
	a6300	v1.00	Compatible
	a6300	v2.01	Compatible
	a6400	v2.00	Partially Compatible
	a6500	v1.05	Compatible
	a6600	v1.10	Compatible
	ZV-F30	v2.01	Compatible
	FX30	v5.00	Compatible
	A6700	v1.03	Compatible
	ZV-E10 II	v1.01	Compatible
	DJI Horizon 4D	v01.03.0200	Compatible

Partially compatible means that this model has poor focusing performance with this lens.

Image 2: The VILTROX 28mm F4.5 lens showcasing its ultra-thin and lightweight design.



Image 3: Detailed dimensions of the VILTROX 28mm F4.5 lens, showing its 60.3mm diameter and 13.5mm thickness.

3. SETUP

3.1 Package Contents

Before you begin, please ensure all items are present in the package:

- Lens (x1)
- Lens cap (x1)
- User manual (x1)
- Repair Card (x1)
- Packing box (x1)

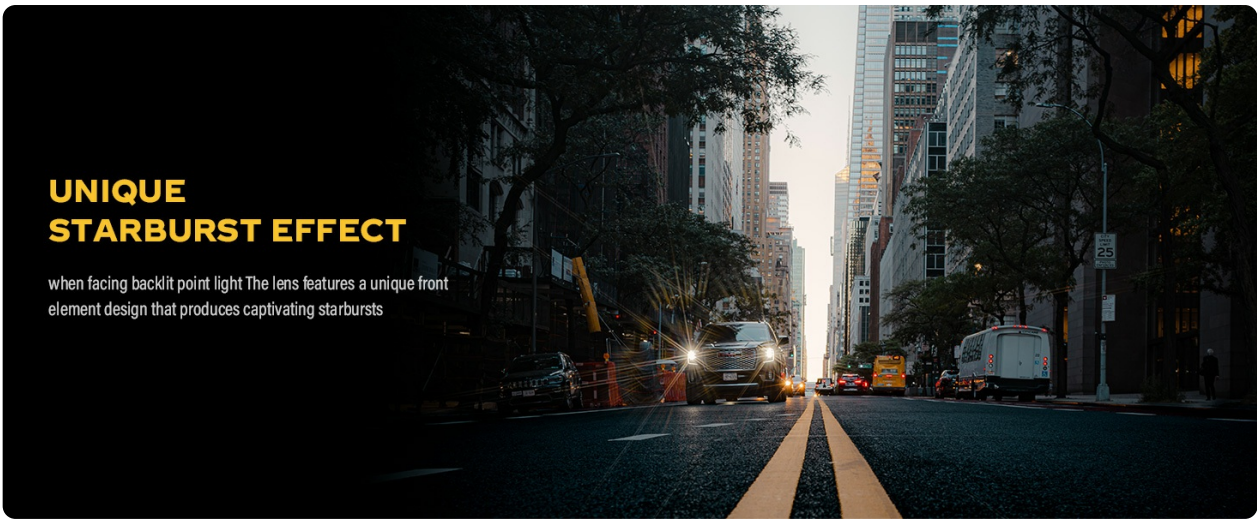


Image 4: Contents of the VILTROX 28mm F4.5 lens package, including the lens, lens cap, user manual, and warranty card.

3.2 Mounting the Lens

To mount the VILTROX 28mm F4.5 lens onto your Sony E-mount camera, align the white dot on the lens barrel with the white dot on your camera's lens mount. Rotate the lens clockwise until it clicks securely into place. Ensure the camera is powered off before attaching or detaching the lens.

Your browser does not support the video tag.

Video 1: Demonstrates the steps for installing the VILTROX 28mm F4.5 E-Mount lens onto a compatible camera body.

4. OPERATING THE LENS

4.1 Lens Cap Operation

The lens features an innovative toggle-opening cap. To open the cap, simply slide the toggle switch. This integrated design prevents misplacement of the lens cap.

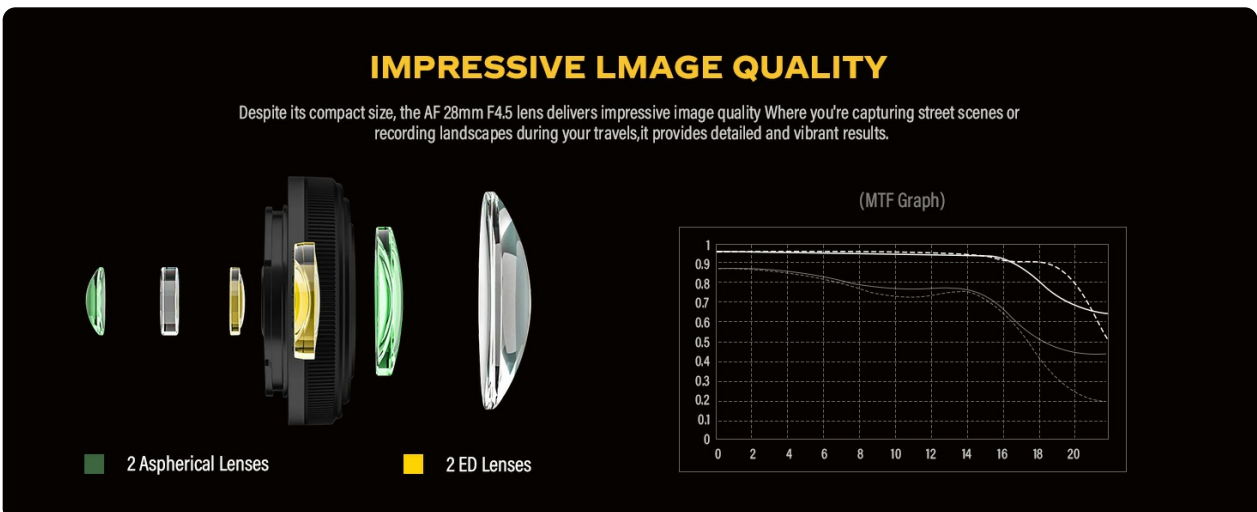


Image 5: Close-up view of the VILTROX 28mm F4.5 lens demonstrating its unique toggle-opening lens cap design.

4.2 Autofocus Function

The VILTROX 28mm F4.5 lens utilizes an efficient and precise autofocus system. Ensure your camera's autofocus mode is set correctly for optimal performance. The lens is designed to deliver accurate focusing without complex procedures.



Image 6: An example of the VILTROX 28mm F4.5 lens's autofocus system, highlighting its precision in subject tracking.

4.3 Focal Length and Aperture

This is a prime lens with a fixed focal length of 28mm and a maximum aperture of F4.5. This combination is ideal for wide-angle photography, including street scenes, landscapes, and general travel photography. The fixed aperture ensures consistent exposure and depth of field.

Your browser does not support the video tag.

Video 2: An overview of the VILTROX 28mm F4.5 E-Mount Ultra-Thin Pancake Lens, discussing its features and applications.

5. MAINTENANCE

5.1 Cleaning the Lens

Use a soft, lint-free cloth to clean the lens elements. For stubborn smudges, use a lens cleaning solution specifically designed for optical surfaces. Avoid touching the lens elements directly with your fingers.

5.2 Storage

When not in use, store the lens with its cap closed in a dry, dust-free environment. Avoid extreme temperatures and high humidity, as the lens is not weather-sealed.

5.3 Firmware Updates

The lens is equipped with a USB-C port for firmware updates. Periodically check the VILTROX official website for the latest firmware to ensure optimal performance and compatibility with new camera models.

28mm FOCAL LENGTH

With its unique perspective and tension-filled perspective effect, the 28mm focal length has been favored by countless masters of street photography for its unique sense of storytelling and strong visual impact, providing photographers with rich creative space.

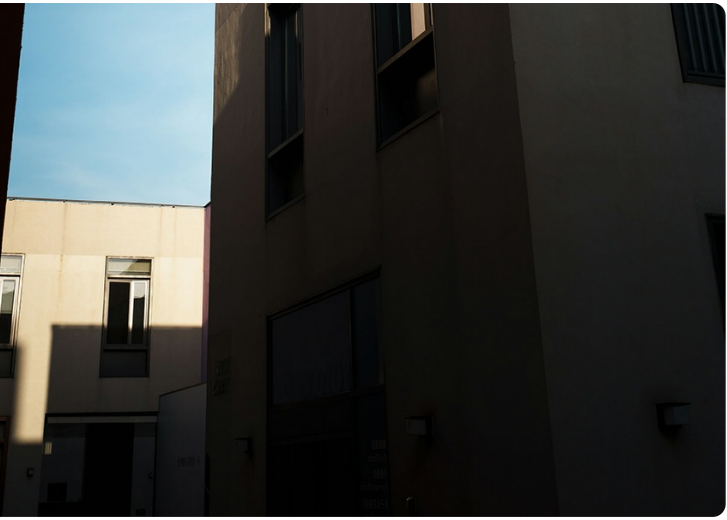


Image 7: Features of the VILTROX 28mm F4.5 lens, including HD Nano Multi-layer Coating, a precision aluminum alloy mount, and a USB-C firmware upgrade interface.

6. TROUBLESHOOTING

- **Lens not recognized by camera:** Ensure the lens is securely mounted and the camera is powered on. Check for any available firmware updates for both the lens and camera.
- **Autofocus issues:** Verify that the camera's autofocus settings are appropriate for your shooting conditions. Clean the lens contacts on both the lens and camera body.
- **Image quality concerns:** Ensure the lens elements are clean. Check camera settings such as ISO, shutter speed, and aperture.

7. SPECIFICATIONS

Specification	Value
Brand	VILTROX
Model Name	VILTROX 28mm F4.5 E-Mount Ultra-Thin Pancake Lens
Compatible Mountings	Sony E
Lens Type	Wide Angle, Prime
Focal Length	28 Millimeters
Maximum Aperture	4.5 f
Minimum Aperture	4.5 f
Focus Type	Auto Focus
Number of Diaphragm Blades	7
Image Stabilization	No image stabilization
Water Resistance Level	Not Water Resistant

7.1 Compatibility

This lens is compatible with Sony E-mount full-frame cameras such as Sony a7, a7R, a7S, a7C, a7RII, a7SII, a7SIII, a7RIII, a7RIV, a7RIV, a9, a9II. It can also be used with APSC cameras.



Image 8: Compatibility table for the VILTROX 28mm F4.5 E-Mount lens with various Sony camera models and their respective firmware versions.

8. WARRANTY AND SUPPORT

8.1 Warranty Information

The VILTROX 28mm F4.5 E-Mount Ultra-Thin Pancake Lens comes with a 1-year warranty from the manufacturer. Please refer to the included warranty card for detailed terms and conditions.

8.2 Customer Support

For any inquiries, technical assistance, or support, please visit the official VILTROX Store or contact their customer service. You can find more information and resources on their official brand store: [VILTROX Official Store](#).