

## MAF MAF-MT33-10K

# MAF King Size 10 Inch High Profile Heavy Duty Metal Box Spring Instruction Manual

Model: MAF-MT33-10K

## IMPORTANT SAFETY INFORMATION

Please read and understand all instructions and safety warnings before assembly and use of this product. Failure to follow these instructions may result in injury or product damage.

- Do not attempt to lift or move the box spring when it is fully assembled.
- Always follow the assembly instructions carefully to prevent instability or collapse.
- Be cautious of sharp edges and the folding design during assembly and use.
- Regularly inspect the box spring for any signs of wear or damage.
- Do not exceed the maximum weight capacity of 3500 lbs.

## PACKAGE CONTENTS

Verify that all components are present before beginning assembly.

- Box Spring Frame Components
- Fabric Cover
- Installation Manual
- Screws
- Wrench

## SETUP AND ASSEMBLY

The MAF King Size Box Spring features a foldable design for easier setup. It is recommended that two adults assemble this product.

## Tools Required:

- Included Wrench
- (Optional) Power screwdriver for faster assembly

## Assembly Steps:

1. **Unpack Components:** Carefully remove all parts from the packaging and lay them out on a clean, flat surface. Ensure all listed components are present.
2. **Unfold the Frame:** The box spring frame comes in a folded configuration. Gently unfold the sections as shown in the diagram below. Ensure the triangular support designs lock into place.
3. **Secure Connections:** Align the frame sections and secure them using the provided screws and wrench. Ensure all connections are tightened securely to prevent wobbling or noise.
4. **Install Slats:** Place the metal slats into their designated positions on the frame. The U-shaped groove design helps secure each pole and support frame.
5. **Apply Fabric Cover:** Once the frame is fully assembled and stable, carefully place the removable fabric cover over the box spring. The cover is designed for easy application and removal.

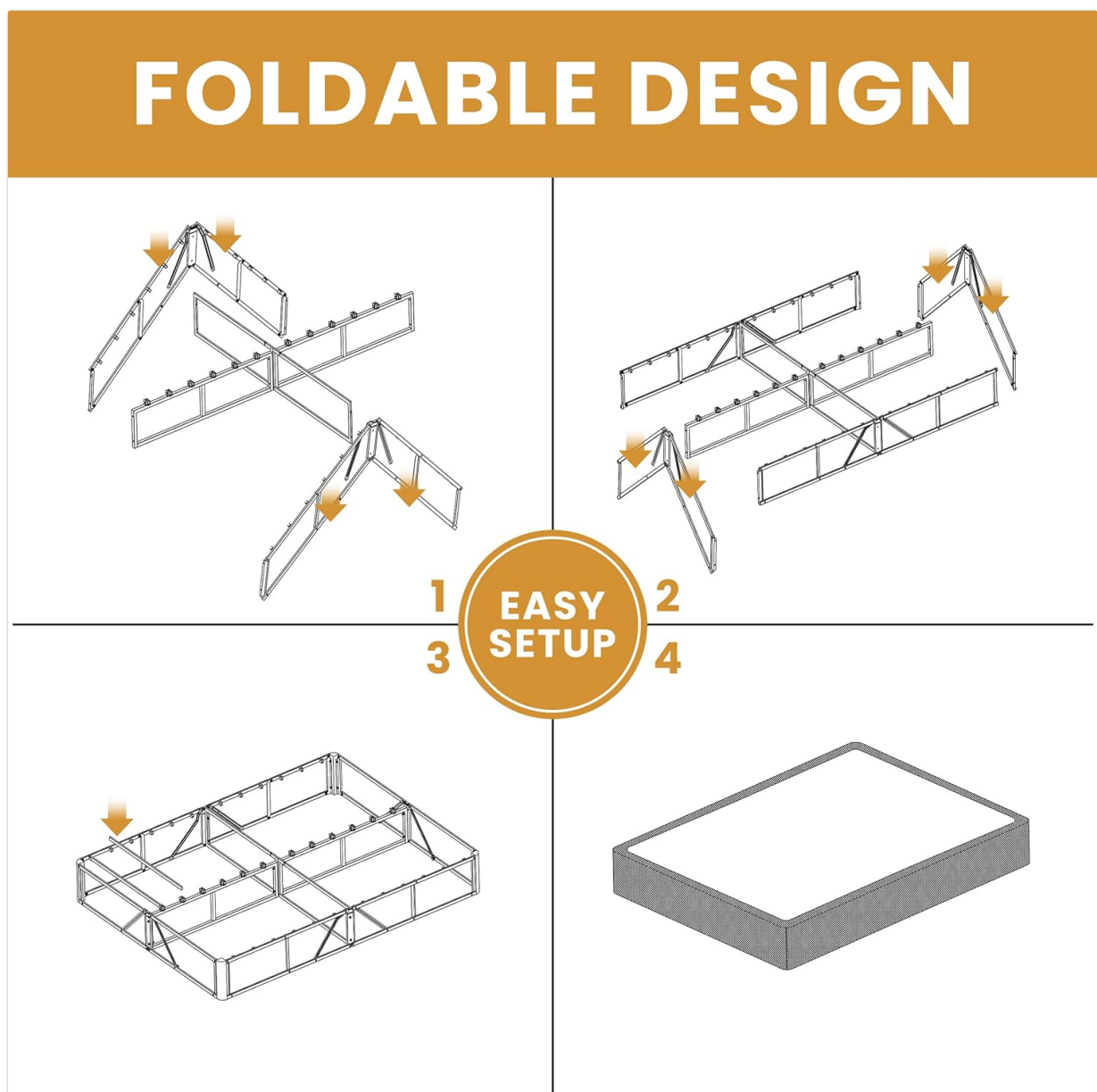
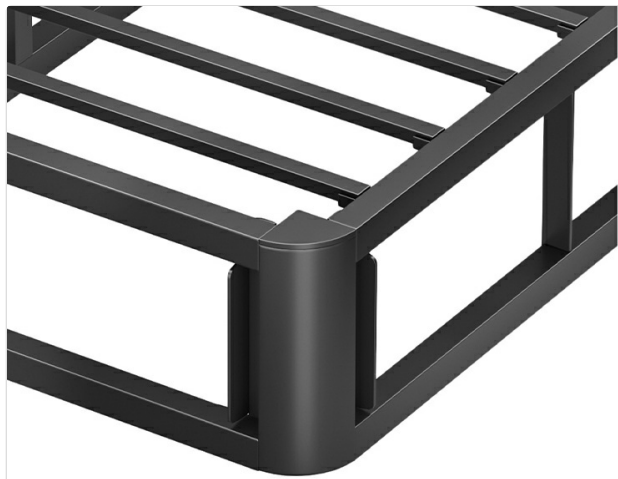


Figure 1: Assembly Steps for the MAF Box Spring.



## ROUND CORNER DESIGN

The box spring with four rounded corners can protect you from injury.

Figure 2: Foldable Design and Easy Assembly Overview.

## ROUND CORNER DESIGN

The box spring with four rounded corners can protect you from injury.



## TRIANGULAR SUPPORT DESIGN

The triangular support design makes it more stable and durable

## U-SHAPED GROOVE DESIGN

U-shaped groove and heavy-duty construction, preventing structural distortion and squeaks

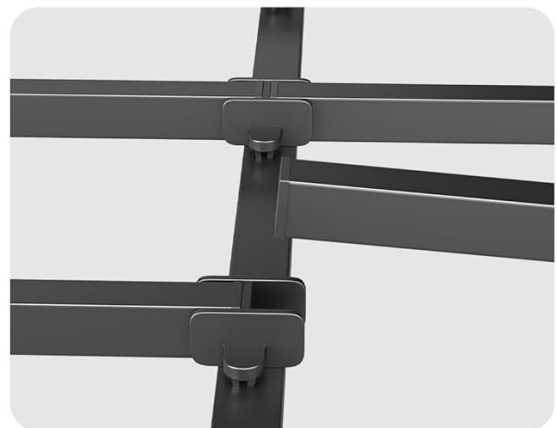


Figure 3: Key Structural Features: Round Corners, Triangular Support, and U-Shaped Grooves.

## OPERATING INSTRUCTIONS

The MAF Box Spring is designed to provide stable support for your mattress. It can be used with various mattress types, including innerspring, memory foam, and latex mattresses.

1. **Placement:** Position the assembled box spring on a compatible bed frame or directly on the floor if desired. Ensure it is level and stable.
2. **Mattress Placement:** Carefully place your mattress on top of the box spring. The box spring is designed to support mattresses up to 80"L x 76"W.
3. **Weight Capacity:** The box spring is engineered to support up to 3500 lbs. Do not exceed this weight limit to maintain structural integrity and safety.
4. **Noise Reduction:** The U-shaped groove design and seamless welding are intended to prevent structural distortion and squeaks, providing a quiet sleeping environment.



Figure 4: Proper Layering of Bed Components.

## MAINTENANCE AND CARE

Proper maintenance ensures the longevity and performance of your MAF Box Spring.

- **Cleaning the Cover:** The fabric cover is removable and washable. Remove it from the frame for cleaning as needed. Follow care instructions on the cover label if available, or wash with mild



detergent and cold water, then air dry.

- **Frame Cleaning:** Wipe the metal frame with a dry cloth to remove dust and debris. Avoid using harsh chemicals or abrasive cleaners.
- **Regular Inspection:** Periodically check all screws and connections to ensure they remain tight. Re-tighten if necessary. Inspect the frame for any signs of bending, cracks, or damage.
- **Moving the Box Spring:** If you need to move the box spring, it is recommended to disassemble it first, especially if moving through narrow doorways or stairs, to prevent damage to the product or injury.

## TROUBLESHOOTING

If you encounter any issues with your MAF Box Spring, refer to the following common solutions:

Problem	Possible Cause	Solution
Squeaking Noise	Loose connections or uneven placement.	Ensure all screws are tightly secured. Verify the box spring is placed on a flat, level surface. The U-shaped groove design is intended to minimize noise; if squeaking persists, re-check assembly.
Instability/Wobbling	Incomplete assembly or damaged components.	Re-check all assembly steps, ensuring triangular supports are engaged and all fasteners are tight. Inspect for any bent or damaged parts.
Mattress Sagging	Exceeded weight capacity or improper mattress support.	Ensure the combined weight of users and mattress does not exceed 3500 lbs. Verify the mattress is compatible with a box spring.

## SPECIFICATIONS

Feature	Detail
Brand	MAF
Model Number	MAF-MT33-10K
Size	King
Product Dimensions	78.8"L x 75.5"W x 10"H
Compatible Mattress Size	80"L x 76"W
Special Feature	Foldable Design, Round Corner Design, Triangular Support, U-Shaped Groove Design
Finish Type	Powder Coated
Included Components	Box Spring Frame, Fabric Cover, Installation Manual, Screws, Wrench

Feature	Detail
Product Care Instructions	Wipe with Dry Cloth, Removable and Washable Fabric Cover
Assembly Required	Yes
Ground To Item Distance	10 Inches
Item Weight	49.1 pounds
Maximum Weight Capacity	3500 lbs



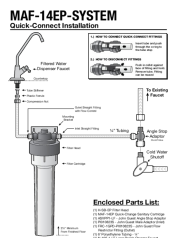
Figure 5: MAF Box Spring Size Chart.

## WARRANTY AND SUPPORT

Specific warranty details for the MAF Box Spring are not provided within this manual. For warranty information, please refer to the product packaging or contact MAF customer support directly.

For further assistance, questions, or to report any issues, please visit the official MAF store or contact their customer service department.

[Visit the MAF Store on Amazon](#)



## MAF-14EP-SYSTEM Quick-Connect Installation Guide

Step-by-step installation guide for the MAF-14EP-SYSTEM water filter, featuring quick-connect fitting instructions, system overview, and a comprehensive parts list for easy setup.

[Walker Products Mass Air Flow Sensors Catalog and Application Guide](#)

Explore the Walker Products catalog for Mass Air Flow (MAF) sensors, featuring comprehensive application guides, technical specifications, and product information for a wide range of vehicles. Discover quality MAF sensors designed for optimal engine performance.



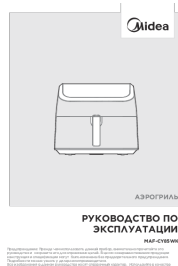
## Scheuchl Motorized Bending Machines: Product Overview and Technical Specifications

Explore the range of Schechtl motorized bending machines, from the MBM to the MAZ and MAE series. Discover features, technical data, control systems, and applications for top-quality sheet metal working.



Руководство по эксплуатации аэрогриля Midea MAF-CN65E(WB)

Полное руководство пользователя для аэрогриля Midea MAF-CN65E(WB), включая меры безопасности, описание прибора, порядок работы, чистку, устранение неисправностей и техническую информацию.



## Руководство по експлуатации аэрогриля Midea MAF-CY85WK

Полное руководство пользователя для аэрогриля Midea MAF-CY85WK, включающее инструкции по безопасности, описание прибора, порядок работы, чистку, уход и устранение неисправностей.



## Ford Lean Driveability Symptoms: MAF Sensor Contamination Diagnosis

Technical Service Bulletin (TSB) 98-23-10 detailing the diagnosis and resolution of lean driveability symptoms in Ford, Lincoln, and Mercury vehicles caused by Mass Air Flow (MAF) sensor contamination. Covers symptoms, DTCs, and diagnostic procedures.

