

## Manuals+

[Q & A](#) | [Deep Search](#) | [Upload](#)

Manuals.plus /

› [werktoough](#) /

› Werktoough Cordless Rotary Tool MD005-Red User Manual

## werktoough MD005

# Werktoough Cordless Rotary Tool MD005-Red User Manual

Model: MD005 | Brand: Werktoough

## INTRODUCTION

This manual provides essential instructions for the safe and effective operation, maintenance, and troubleshooting of your Werktoough Cordless Rotary Tool, model MD005. This versatile 8V rotary tool, equipped with a 2.0A battery and 40 accessories, is designed for various applications including drilling, sharpening, sanding, engraving, milling, polishing, grinding, and pet trimming. Please read this manual thoroughly before initial use and retain it for future reference.

## SAFETY INFORMATION

Always observe basic safety precautions to reduce the risk of fire, electric shock, and personal injury when using power tools. Keep this manual for future reference.

- **Eye Protection:** Always wear safety glasses or goggles to protect against flying debris.
- **Work Area:** Keep your work area clean and well-lit. Cluttered or dark areas invite accidents.
- **Electrical Safety:** Do not expose power tools to rain or wet conditions. Do not abuse the cord.
- **Personal Safety:** Stay alert, watch what you are doing, and use common sense. Do not operate the tool while tired or under the influence of drugs, alcohol, or medication.
- **Tool Use and Care:** Do not force the tool. Use the correct tool for your application. Disconnect the battery pack before making any adjustments, changing accessories, or storing power tools.
- **Accessory Compatibility:** Only use accessories specifically designed for this rotary tool. Ensure accessories are properly secured before operation.
- **Spindle Lock:** Do not press the spindle lock button while the tool is running.

## PRODUCT COMPONENTS AND FEATURES



Figure 1: Overview of the rotary tool with key components labeled, including the locking collar, spindle lock button, speed control buttons, and Type-C charging port.

### Key Features:

- **Cordless Operation:** Powered by an 8V 2.0A Lithium-Ion battery for portability.
- **Variable Speed Control:** 5 speed settings ranging from 5,000 to 25,000 RPM, indicated by LED lights.
- **Integrated LED Light:** 4 front LED lights illuminate the work area for improved visibility.
- **USB Type-C Charging:** Convenient and universal charging capability.
- **Spindle Lock:** Facilitates quick and easy accessory changes.
- **Ergonomic Design:** Engineered for comfortable handling with low vibration and noise.

### PACKAGE CONTENTS

Verify that all items are present upon unpacking. If any items are missing or damaged, contact customer support.

# 44PCS ACCESSORIES



**Figure 2:** The rotary tool, USB charging cable, and a comprehensive set of 40 accessories, all neatly organized in a storage box.

- WerkTough Cordless Rotary Tool (MD005) x1
- USB Type-C Charging Cable x1
- Storage Box x1
- Collets (3.2mm) x3
- Wrench x1
- Sanding Drums for Sanding Belts x2
- Mandrel for Felt Wheel/Sanding Paper x1
- Aluminum Oxide Grinding Wheels x5
- Sanding Paper Discs x16
- Sanding Belts (small) x3
- Sanding Belts (large) x3
- Felt Polishing Wheels x3
- Diamond Bits x2

## SETUP

## 1. Charging the Battery

The rotary tool is powered by an internal 8V 2.0A Lithium-Ion battery. It is recommended to fully charge the tool before its first use.

1. Locate the USB Type-C charging port on the bottom of the tool (refer to Figure 1).
2. Connect the provided USB Type-C cable to the tool and the other end to a compatible USB power source (e.g., computer, wall adapter, portable battery).
3. The battery charging indicator lights will illuminate during charging. Once fully charged, the lights will indicate completion or turn off depending on the model.
4. Charging time may vary. Ensure the tool is fully charged for optimal performance.



Figure 3: The rotary tool being charged via its USB-C port, demonstrating compatibility with various USB power sources.

## 2. Attaching Accessories

Always ensure the tool is turned off before changing accessories.

1. Press and hold the spindle lock button (refer to Figure 1) to prevent the shaft from rotating.
2. Unscrew the locking collar at the front of the tool.
3. Insert the desired accessory into the collet. Ensure the accessory shank is fully seated.
4. Tighten the locking collar securely by hand. Do not overtighten.

5. Release the spindle lock button.

**Note:** Use the appropriate collet size for your accessory. The kit includes 3.2mm collets.

## OPERATING INSTRUCTIONS

### 1. Powering On/Off

- To turn on the tool, press the power button. The LED speed indicators will light up.
- To turn off the tool, press the power button again.

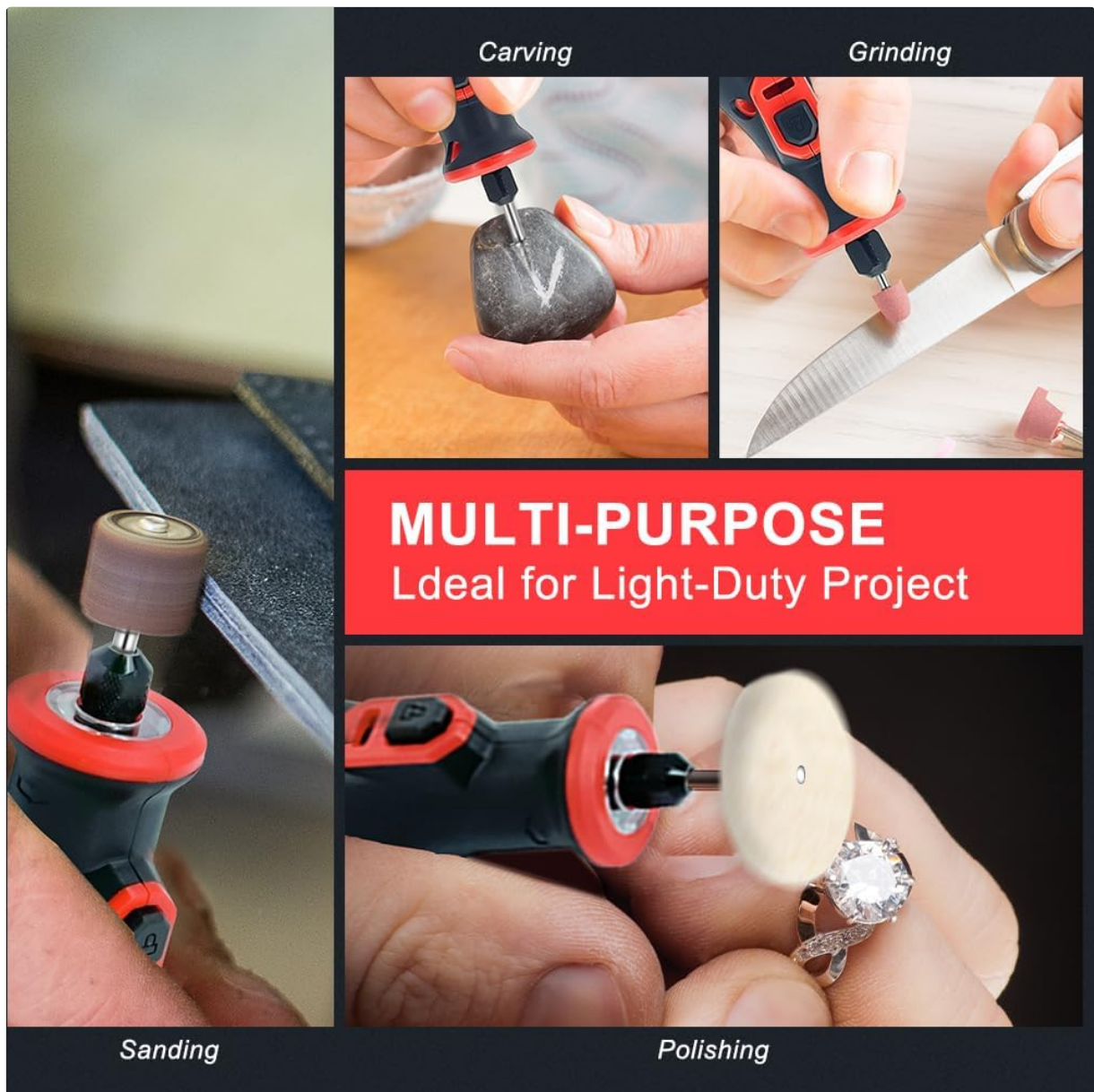
### 2. Adjusting Speed

- After powering on, use the '+' and '-' buttons (refer to Figure 1) to cycle through the 5 available speed settings (5,000 to 25,000 RPM).
- The LED indicators will show the currently selected speed.
- Select a lower speed for polishing, delicate work, or when using larger accessories. Use higher speeds for grinding, cutting, or when working with harder materials.

### 3. General Operation Tips

- **Light Pressure:** Allow the tool and accessory to do the work. Excessive pressure can cause the tool to slow down, overheat, or damage the workpiece.
- **Consistent Movement:** Move the tool smoothly and consistently across the workpiece for even results.
- **Workpiece Security:** Always secure your workpiece in a vise or with clamps to prevent movement during operation.
- **Cooling:** For prolonged use, allow the tool to cool periodically to prevent overheating.

### 4. Specific Applications



**Figure 4:** The versatility of the rotary tool demonstrated across various tasks such as sanding wood, carving stone, grinding metal, and polishing jewelry.

- **Sanding:** Use sanding drums or discs for smoothing surfaces. Start with a coarser grit and progress to finer grits for a smoother finish.
- **Grinding:** Utilize grinding stones for shaping, sharpening, or deburring metal.
- **Polishing:** Attach felt polishing wheels with polishing compound to achieve a high-gloss finish on various materials.
- **Carving/Engraving:** Use diamond bits or carving bits for detailed work on wood, plastic, or soft metals.
- **Drilling:** While not explicitly included, small drill bits can be used for precision drilling with appropriate collets.



**Figure 5:** Demonstrating the polishing capability of the rotary tool on a metal fixture, highlighting its precision for finishing tasks.



**Figure 6:** Illustrating the carving function of the rotary tool on a wooden leaf, showcasing its suitability for intricate detail work.

## MAINTENANCE

Regular maintenance ensures the longevity and optimal performance of your rotary tool.

- **Cleaning:** After each use, wipe down the tool with a clean, dry cloth. Use a soft brush or compressed air to remove dust and debris from ventilation openings and the collet area. Do not use harsh chemicals or abrasive cleaners.
- **Accessory Storage:** Store accessories in their designated compartments within the storage box to prevent damage and loss.
- **Battery Care:**
  - Avoid fully discharging the battery frequently.
  - Charge the battery in a cool, dry place.
  - If storing the tool for an extended period, charge the battery to approximately 50% and recharge every 3-6 months.
- **Inspection:** Periodically inspect the tool and accessories for any signs of wear, damage, or loose parts. Replace worn accessories promptly.

## TROUBLESHOOTING

Problem	Possible Cause	Solution
Tool does not turn on.	Battery is discharged.	Charge the battery fully using the provided USB-C cable.
Tool loses power or stops during operation.	Battery is low or discharged. Excessive pressure applied.	Recharge the battery. Reduce pressure on the workpiece.
Accessory wobbles or is not secure.	Accessory not properly inserted. Locking collar not tightened. Incorrect collet size.	Ensure accessory shank is fully seated. Tighten the locking collar. Use the correct collet for the accessory shank diameter.
Tool overheats.	Prolonged use at high speed or with excessive pressure. Blocked ventilation.	Allow the tool to cool down. Reduce operating time or pressure. Clear any obstructions from ventilation slots.
Cannot change speed.	Tool not powered on.	Ensure the tool is powered on before attempting to adjust speed.

If the problem persists after attempting these solutions, please contact customer support.

## SPECIFICATIONS

Feature	Detail
Model	MD005
Brand	Werktoough
Voltage	8 Volts (DC)
Power Source	Battery Powered (Lithium Ion)
Battery Capacity	2000 mAh (2.0A)
Speed Settings	5 (5,000 - 25,000 RPM)
Maximum Rotational Speed	25000 RPM
Minimum Speed	5000 RPM
LED Lights	4 Front LED lights
Charging Port	USB Type-C
Item Weight	1.4 pounds
Package Dimensions	8.75 x 5.5 x 2.4 inches

## WARRANTY AND SUPPORT

Specific warranty information for the Werktoough Cordless Rotary Tool MD005 is not provided in this

manual. For details regarding warranty coverage, returns, or technical support, please refer to the product packaging, the retailer's website where the product was purchased, or contact Werktoough customer service directly.

When contacting support, please have your product model number (MD005) and purchase date available.

---

© 2025 Werktoough. All rights reserved.