

Cubonic C68

Cubonic C68 Smart Bracelet Fitness Tracker User Manual

Model: C68

1. INTRODUCTION

The Cubonic C68 Smart Bracelet is a health and fitness tracker designed to monitor various aspects of your daily activity and well-being. Featuring a 1.1-inch AMOLED HD screen, it provides clear visual feedback and supports custom watch faces. This device is equipped with sensors for heart rate, blood oxygen, and blood pressure monitoring, alongside comprehensive activity tracking and smart notifications. Its lightweight design and IP67 water resistance make it suitable for everyday wear.

2. WHAT'S IN THE BOX

- Cubonic C68 Smart Bracelet
- Charging Cable
- User Manual

3. INITIAL SETUP

3.1. Charging the Device

Before first use, fully charge your Cubonic C68 Smart Bracelet. The device features a built-in USB charging interface. Connect the charging contacts on the back of the tracker to a standard USB port (e.g., computer, USB wall adapter). A full charge typically takes 1-2 hours.

14 days long endurance

Magnetic suction charging is convenient and fast. In a typical scenario, the longest endurance is 14 days, giving you a stable sense of security and companionship.

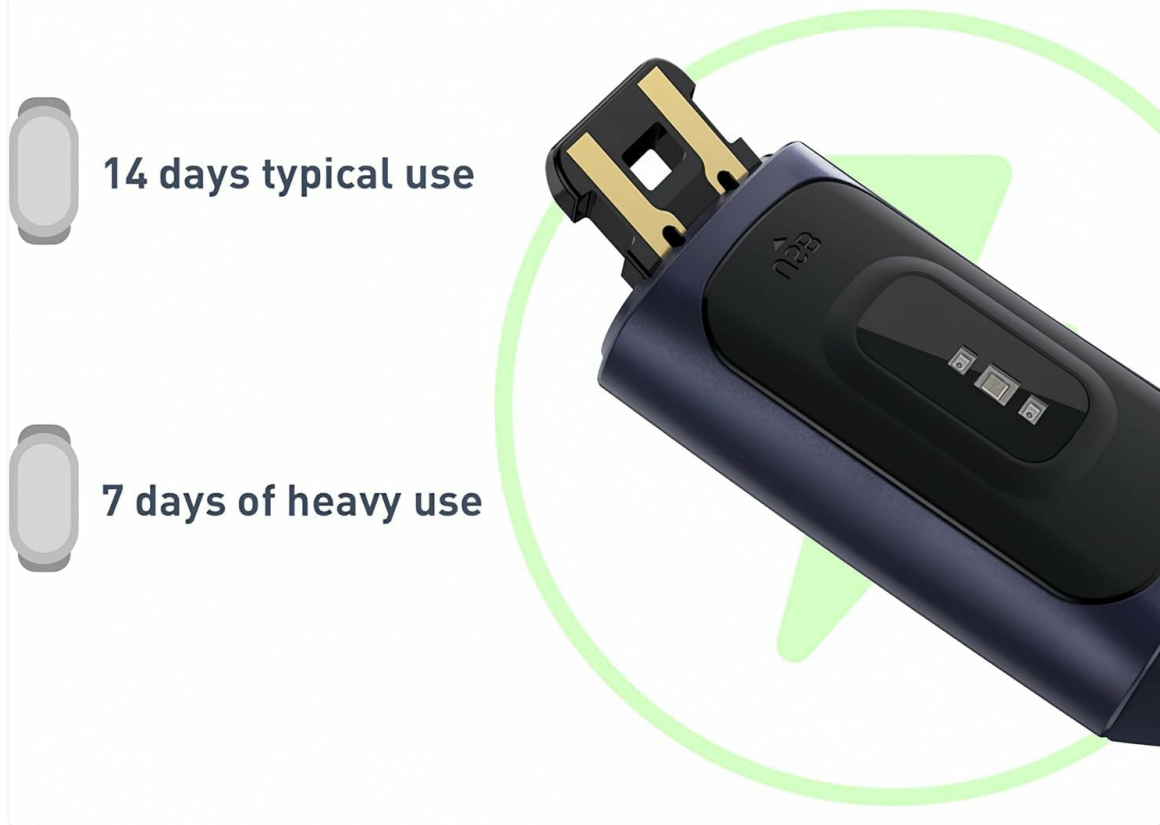


Image: The magnetic charging contacts on the back of the Cubonic C68 Smart Bracelet, indicating where the charging cable connects. Text highlights 14 days of typical use and 7 days of heavy use.

3.2. Installing the Companion App

To unlock the full functionality of your smart bracelet, download and install the "Keep Health" application on your smartphone. The app is available on both the Google Play Store for Android devices and the Apple App Store for iOS devices.

3.3. Pairing with Your Smartphone

1. Ensure your smartphone's Bluetooth function is enabled.
2. Open the "Keep Health" app on your smartphone.
3. Navigate to the device section within the app and select "Add Device".
4. The app will search for nearby devices. Select "C68" or a similar identifier from the list.
5. Confirm the pairing request on both your smartphone and the smart bracelet if prompted.

How to connect the fitness tracker?

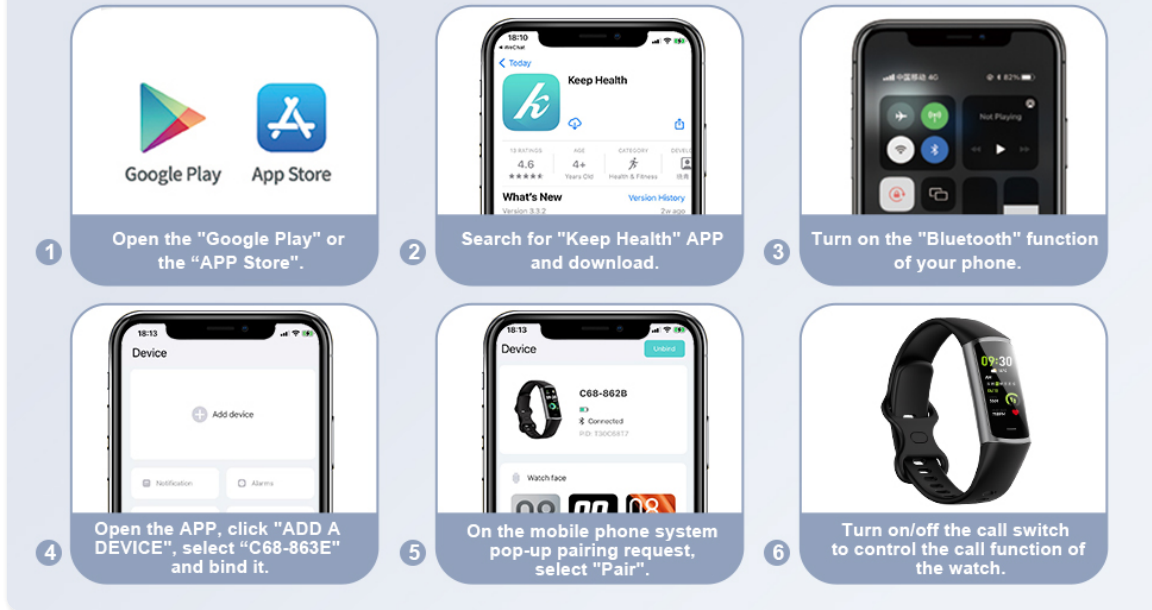


Image: A six-step visual guide demonstrating how to connect the Cubonic C68 Smart Bracelet to a smartphone using the 'Keep Health' application, from downloading the app to pairing the device.

4. DEVICE OPERATION

4.1. Navigating the Interface

The Cubonic C68 features a responsive touchscreen display. Swipe left, right, up, or down to navigate through different functions and menus. Tap to select an option or confirm an action.

4.2. Activity Tracking

The smart bracelet automatically tracks your daily activities, including steps taken, calories burned, and distance covered. This data is synchronized with the "Keep Health" app, allowing you to monitor your progress towards fitness goals.

4.3. Heart Rate Monitoring

The C68 provides 24/7 dynamic heart rate monitoring. Wear the bracelet snugly on your wrist for accurate readings. You can view your current heart rate on the device or detailed historical data in the app.

24x7 heart rate monitoring

Keep an eye on your heartbeat

This function can monitor your heart rate changes 24 hours, so that you can always pay attention to your heart health.



Image: The Cubonic C68 Smart Bracelet on a wrist, with its screen displaying a heart rate icon and the text 'Heart rate', indicating its continuous heart rate monitoring feature. A person is running in the background.

4.4. Blood Oxygen Saturation (SpO2)

The device can measure your blood oxygen saturation levels. To take a reading, ensure the bracelet is worn correctly and remain still. The results will be displayed on the screen and recorded in the app.

Blood oxygen saturation detection

Accurately control the body state

Blood oxygen saturation is one of the basic characteristics to measure human health. The C80 bracelet benefits from excellent sensors. With the help of professional algorithms, it can accurately detect the blood oxygen level and help adjust its own state.



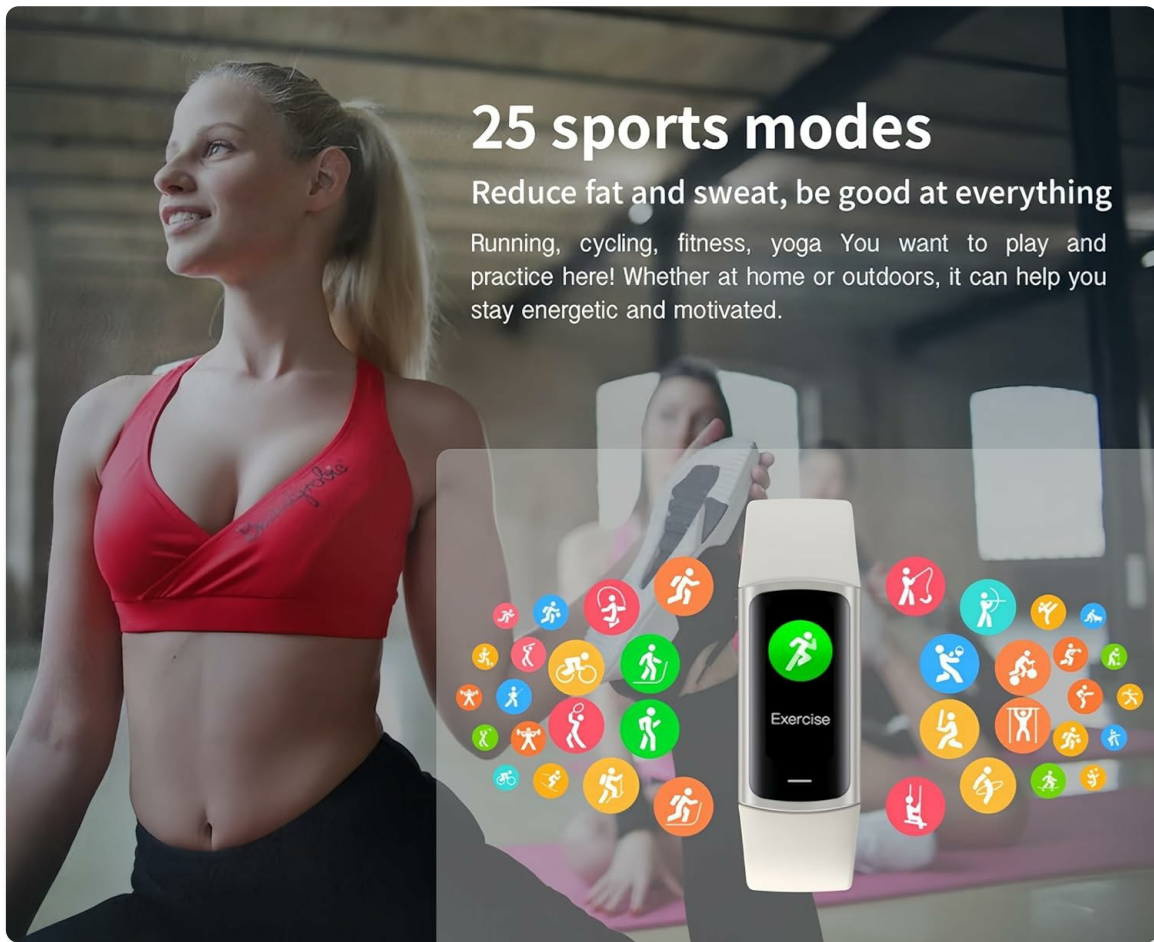
Image: Two Cubonic C68 Smart Bracelets, one black and one white, with their screens showing blood oxygen icons and percentage readings, illustrating the device's blood oxygen saturation detection capability.

4.5. Sleep Monitoring

Wear the smart bracelet to bed to track your sleep patterns. It monitors your time in deep sleep, light sleep, and awake stages, providing a nightly sleep score and analysis in the "Keep Health" app to help improve your sleep habits.

4.6. Sports Modes

The C68 supports 25 professional sport modes. Select the appropriate mode before starting an activity to record specific workout data such as duration, heart rate, and distance. This data helps in achieving your fitness goals more efficiently.



25 sports modes

Reduce fat and sweat, be good at everything

Running, cycling, fitness, yoga You want to play and practice here! Whether at home or outdoors, it can help you stay energetic and motivated.

Image: A visual representation of the 25 different sports modes available on the Cubonic C68 Smart Bracelet, shown as various activity icons surrounding a person exercising, with the tracker displaying 'Exercise'.

4.7. Smart Functions

The smart bracelet offers various intelligent features when connected to your smartphone:

- **Call & Message Reminder:** Receive notifications for incoming calls and messages directly on your wrist.
- **Remote Photograph:** Control your phone's camera remotely.
- **Drink Water Reminder:** Get reminders to stay hydrated.
- **Sedentary Reminder:** Alerts you to move after periods of inactivity.
- **Alarm Clock:** Set alarms to vibrate on your wrist.
- **Stopwatch:** A built-in stopwatch function.
- **Find Device:** Helps locate your paired smartphone.

Access your world from your wrist



Image: An array of Cubonic C68 Smart Bracelets, each displaying a different smart function icon such as music control, messages, always-on display, settings, sleep tracking, and exercise, highlighting the device's versatile features.

5. CARE AND MAINTENANCE

5.1. Cleaning

Regularly clean your smart bracelet and strap to prevent skin irritation and maintain device performance. Use a soft, damp cloth to wipe the screen and strap. Avoid harsh chemicals or abrasive materials.

5.2. Water Resistance (IP67)

The Cubonic C68 Smart Bracelet is rated IP67, meaning it is resistant to dust and can withstand immersion in water up to 1 meter for 30 minutes. This makes it suitable for daily use, such as resisting sweat, rain, and shallow water swimming. However, it is **not** recommended for hot showers, saunas, or diving, as steam and high water pressure can compromise the seals.

IP67 Water Resistance

Without worrying about getting or sweaty



Image: Two Cubonic C68 Smart Bracelets, one silver and one rose gold, being splashed with water, illustrating their IP67 water resistance feature, suitable for sweat, rain, and shallow water exposure.

6. TROUBLESHOOTING

- **Device not turning on or charging:** Ensure the charging cable is securely connected to both the device and a working USB power source. Try a different USB port or adapter.
- **Not connecting to smartphone:** Check if Bluetooth is enabled on your phone. Ensure the "Keep Health" app is open and the device is within range. Try restarting both the bracelet and your phone.
- **Inaccurate readings (Heart Rate/SpO2):** Ensure the bracelet is worn snugly on your wrist, not too tight or too loose. Clean the sensor on the back of the device. Remain still during measurements.
- **Screen not responding:** Try restarting the device (if an option is available in settings) or allow the battery to fully drain and then recharge it.

7. TECHNICAL SPECIFICATIONS

Brand	Cubonic
Model	C68
Display Type	AMOLED
Screen Size	1.1 Inches
Battery Capacity	1000 Milliamp Hours
Battery Type	Lithium Ion
Connectivity	Bluetooth
Water Resistance	IP67
Compatible OS	Android Wear 2.6 (Compatible with Smartphone)
Item Weight	100 g
Product Dimensions	13.79 x 9.5 x 1.91 cm

Dimension



Image: An illustration detailing the physical dimensions of the Cubonic C68 Smart Bracelet, including the width, length, and thickness of the tracker module and the overall strap length.

8. WARRANTY INFORMATION AND SUPPORT

For warranty details and customer support, please refer to the warranty card included with your product or contact Cubonic customer service. You can reach Cubonic India customer care via WhatsApp at **7011410155**.

