



[Manuals.plus](#) /

> [Apexel](#) /

> APEXEL 2-in-1 HD Fixed Focus 6X Telephoto Lens & 150mm Macro Lens Kit User Manual

Apexel TM6

APEXEL 2-in-1 HD Fixed Focus Telephoto & Macro Lens Kit User Manual

Model: TM6

INTRODUCTION

This manual provides comprehensive instructions for the APEXEL 2-in-1 HD Fixed Focus 6X Telephoto Lens & 150mm Macro Lens Kit, Model TM6. This professional phone lens kit is designed to enhance your smartphone photography by offering both long-distance telephoto capabilities and intricate close-up macro shooting. Please read this manual thoroughly before use to ensure proper operation and care of your new lens kit.



Figure 1: The APEXEL 2-in-1 HD Fixed Focus Telephoto & Macro Lens Kit.



Figure 2: The TM6 TeleMacro Lens, designed for versatile photography from wide landscapes to intricate details.

PACKAGE CONTENTS

Verify that all items listed below are included in your package:

- 1 x Telephoto Lens
- 1 x 150mm Macro Lens
- 1 x 37mm Threaded Phone Clip
- 1 x 37mm Threaded Eyecup
- 1 x 25-37mm Adapter Ring
- 1 x Organizer Pouch
- 1 x Cleaning Cloth
- 3 x EVA Spacers
- 1 x User Manual (this document)



1



2



3



4



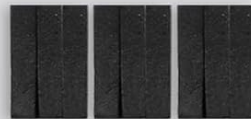
5



6



7



8

Packing List

1. Telephoto Lens X1

2. 150mm Macro Lens X1

3. 37mm Threaded Phone Clip X1

4. 37mm Threaded Eyecup X1

5. 25-37mm Adapter Ring X1

6. Organizer Pouch X1

7. Cleaning Cloth X1

8. EVA Spacer X3

Figure 3: All components included in the APEXEL 2-in-1 lens kit package.

What's in the Package



Packaging box



Phone mount



25-37mm adapter ring



Telephoto macro lens



Cleaning cloth



Protective lens bag



User Manual



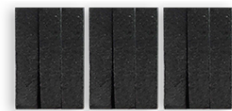
150mm macro lens



Eyepiece cover



37mm eyecup



EVA pads

Figure 4: Visual representation of the package contents, including the packaging box, phone mount, adapter ring, telephoto macro lens,

cleaning cloth, protective lens bag, user manual, 150mm macro lens, eyepiece cover, 37mm eyecup, and EVA pads.

Your browser does not support the video tag.

Video 1: Unboxing and initial look at the TM6 Telephoto Macro Lens kit.

SETUP AND INSTALLATION

Compatibility

The APEXEL lens kit is designed for most smartphones with a width between 70-100 mm (2.8-3.9 inches). Please note that it is **not compatible** with iPhone Mini, SE series, or Samsung Galaxy S25, S24, S23, S22 series. If your phone has a built-in macro function, it is recommended to disable it before using this lens kit for optimal performance.



Figure 5: The universal clip is compatible with most smartphones within the specified width range.

Widely Compatible

Suitable for all smartphones with a width of 70–100mm (2.8–3.9")

(Tips: Does not fit small-sized iPhone Mini and SE series)
(Not fit for Samsung S25,S24,S23,S22)



Figure 6: Detailed compatibility information, including phone width and specific models that are not supported. EVA pads are included to keep the protruding phone lens level with the phone clip.

Quick Installation Steps

Follow these steps to properly install the lens kit on your smartphone:

1. **Pull:** Pull apart the stretching clamp of the phone clip and carefully insert your smartphone.
2. **Push:** Loosen the top screw on the phone clip and push the slider to align the central aperture with your phone's main camera lens.
3. **Twist:** Tighten the top fixed screw to secure the phone clip in the correct focus hole position.
4. **Screw:** Screw the telephoto lens (or macro lens, if using separately) into the threaded interface of the phone clip to complete the installation.

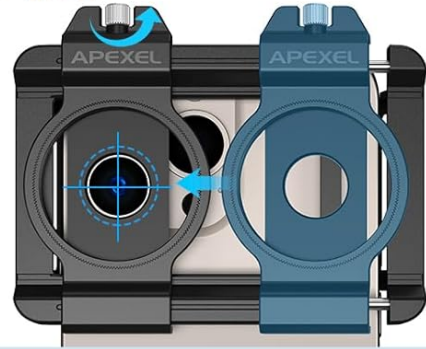
Quick Installation in Only 4 Steps

1.Pull



Pull apart the stretching clamp and insert the phone.

2.Push



Loosen the top screw and push the slider to align with the phone's main lens.

3.Twist



Tighten the top fixed screw, securing the focus hole position.

4.Screw



Screw the aperture and lens into the threaded interface to complete installation.

⚠ Tips: If you encounter problems such as unclear product installation, unsuitable mobile phone clip, pressed keys, black circles or black screen on the mobile phone, etc., you can contact us to solve them for you.

Figure 7: Step-by-step guide for attaching the lens to your smartphone.

Quick Installation in Only 4 Steps

1.Pull



Pull apart the stretching clamp and insert the phone.

2.Push



Loosen the top screw and push the slider to align with the phone's main lens.

3.Twist



Tighten the top fixed screw, securing the focus hole position.

4.Screw



Screw the aperture and lens into the threaded interface to complete installation.



5.9 - 15.74 in
(15-40cm)



If you encounter any problems with unclear usage or incompatibility of the clip, please feel free to write to us.

Macro Lens Working Distancecv

Figure 8: Visual instructions for quick installation, specifically highlighting the macro lens working distance.

EVA Gasket Installation

If your phone's camera lens protrudes significantly, use the provided EVA spacers to ensure the phone lens is level with the phone clip. This helps in achieving a stable and aligned connection.

Your browser does not support the video tag.

Video 2: Demonstration of EVA gasket installation for proper lens alignment.

OPERATING INSTRUCTIONS

Telephoto Lens Usage (6X Fixed Focus)

The 6X telephoto lens allows you to capture distant subjects with enhanced clarity. The optimal focusing distance for the telephoto lens is 30cm to infinity. Simply attach the telephoto lens to the phone clip and use your phone's camera application. You can adjust the focus by rotating the focus ring on the lens.

Telephoto Lens

6X telephoto, distance is no longer a boundary and beauty is no longer missed.



Telephoto optimal focusing distance: 30cm-∞ (11.81 in.-∞)



Naked-eye observation



iPhone 12 + 6X Telephoto Lens

Figure 9: Example of telephoto lens capability, showing a distant bird captured clearly.

Telephoto & Macro Lens

Dual Functionality: Seamlessly combines telephoto and super macro capabilities, allowing you to capture stunning landscapes and intricate details with ease.



6X Telephoto

Optimum focusing distance 300mm or more



150mm Macro Lens

Optimum focusing distance: 150mm-400mm

Figure 10: Dual functionality of the lens kit, highlighting the 6X telephoto and 150mm macro capabilities.



Telephoto Lens

Suitable for a wide variety of scenes and objects.



Watch Animals



Watch Concerts



Watch Match



Viewing

Figure 11: Various applications for the telephoto lens, including wildlife observation and event viewing.

Your browser does not support the video tag.

Video 3: Overview of the 6X telephoto lens and 150mm macro lens functionalities.

Macro Lens Usage (150mm)

The 150mm macro lens is designed for capturing intricate details of small subjects. This lens needs to be installed separately from the telephoto lens. The optimal macro distance is between 15cm and 40cm from the subject. Rotate the focus ring on the macro lens to achieve sharp focus.

Macro Lens

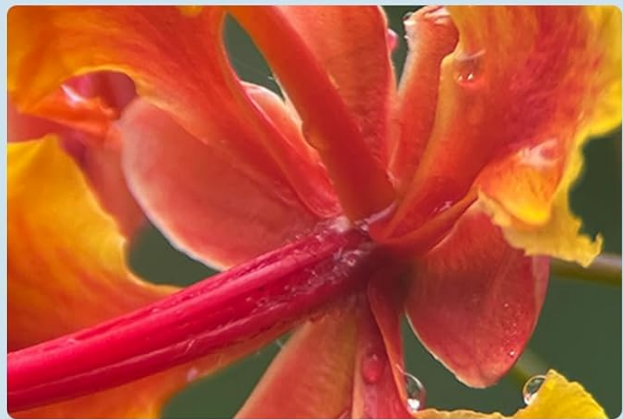
150mm macro lens, captures details and makes every moment memorable.



Macro optimal focusing distance: 15cm-40cm (5.9-15.74 in.)



Naked-eye observation



iPhone 12 + 150mm Macro Lens

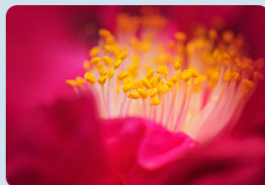
Figure 12: Example of macro lens capability, showing detailed capture of a flower.



Macro Lens

(Need to add 150mm macro lens)

Suitable for a wide variety of scenes and objects.



Stamens



Insects



Drinks



Fruits



Jewelry



Coins

Figure 13: Various applications for the macro lens, including close-up photography of small objects.

Your browser does not support the video tag.

Video 4: Demonstration of 150mm macro lens shooting.

Dual Modes: Phone Photography & Handheld Observation

The TM6 lens supports two primary usage modes:

- **Phone Photography:** Install the lens on your mobile phone using the provided clip to enhance your phone's photography capabilities for both distant and close-up shots.
- **Naked Eye Observation:** After installing the included eyecup, the telephoto lens can be used as a mini monocular for direct observation of distant objects without a phone.

Handheld Observation

Equipped with comfortable and durable eyecups, you can directly observe things at a distance and up close with your naked eye.



Phone Photography

Install multi-functional phone clip to enhance your cell phone's ability to take photos, discover and share the details of things.



Figure 14: The lens can be used for handheld observation or attached to a phone for photography.

Widely Used

Wide range of use, can be switched between indoor and outdoor at will.



Figure 15: The lens kit offers versatile use for both distant and close-up observations.

Your browser does not support the video tag.

Video 5: Demonstration of switching between telephoto and macro modes for different shooting scenarios.

Addressing Dark Corners / Black Circles

It is normal to encounter small dark corners or black circles on the screen when using the lens. To reduce this effect, you can appropriately enlarge your phone screen within the camera application. If your phone has a separate telephoto lens, be mindful that excessive magnification may cause it to automatically switch to the phone's telephoto lens, potentially resulting in a black screen.



Enlarge The Phone'S Shooting Magnification To 2.4X To Eliminate Black Edges

If your phone has a separate telephoto lens, a black screen will appear when you zoom in on the phone screen. You can reduce the screen magnification appropriately.

Figure 16: Adjusting phone screen magnification can help minimize dark corners.

Maintaining Macro Control (iOS & Galaxy)

For optimal macro photography, it may be necessary to adjust your phone's macro settings:

- **For iOS (iPhone 13 and newer):**

1. Go to **Settings**.
2. Navigate to **Camera**.
3. Turn on **Macro Control**.
4. Disable the macro function of your phone within the camera app to use the external macro lens effectively.

- **For Samsung Galaxy S22, S23 Ultra:**

1. Open the camera app and tap the close-up focus enhancement icon. When illuminated yellow, it is activated.
2. Tap again to turn off the focus enhancement for the external macro lens.

Maintain Macro Control for iOS

For iPhone 13 and newer, you'll need to turn off macro controls on the camera screen and use them on the main camera.

Step 1. Go to settings

Step 2. Camera

Step 3. Turn on Macro Control

Step 4. Disable the macro function of your iPhone

Maintain Macro Control for GALAXY

Disable focus enhancement for Samsung Galaxy S22 S23 Ultra.

Step 1. Open the camera app and tap the close up focus enhancement icon, when illuminated yellow, it is activated.

Step 2. Tap again to turn off.

Figure 17: Steps to manage macro settings on iOS and Galaxy phones for optimal external lens use.

MAINTENANCE

To ensure the longevity and optimal performance of your APEXEL lens kit, follow these maintenance guidelines:

- **Cleaning Lenses:** Use the provided cleaning cloth or a soft, lint-free microfiber cloth specifically designed for optical lenses. Gently wipe the lens surfaces to remove dust, smudges, or fingerprints. Avoid using abrasive materials or harsh chemicals.
- **Storage:** When not in use, store the lenses and phone clip in the provided organizer pouch to protect them from dust, scratches, and impacts. Keep them in a cool, dry place away from direct sunlight and extreme temperatures.
- **Handling:** Always handle the lenses by their barrels and avoid touching the optical surfaces directly.

TROUBLESHOOTING

Problem	Possible Cause	Solution
Small dark corners or black circles on screen	Normal due to lens design; phone's telephoto lens interference.	Enlarge the phone screen appropriately within the camera app. If your phone has a separate telephoto lens, avoid excessive magnification that might trigger it.
Phone clip does not match or fit	Incompatibility with phone model or incorrect adjustment.	Ensure your phone width is within 70-100mm. Refer to the compatibility section. If issues persist, contact customer support for replacement accessories.
Unclear product installation	Improper alignment or attachment.	Review the "Quick Installation Steps" carefully. Ensure the lens is securely screwed into the phone clip and aligned with the main camera.
Pressed keys or buttons on phone	Phone clip obstructing side buttons.	Adjust the phone's position within the clip to avoid pressing any buttons. The clip is designed to be adjustable.

If you encounter any problems not listed here or require further assistance, please contact APEXEL customer support.

SPECIFICATIONS

Key technical specifications for the APEXEL 2-in-1 HD Fixed Focus Telephoto & Macro Lens Kit:

- **Brand:** Apexel
- **Model:** TM6
- **Lens Design:** 6X (Telephoto)
- **Min Focal Length:** 15 Millimetres (Macro)
- **Max Focal Length:** 1000 Millimetres (Telephoto)
- **Focus Type:** Manual Focus
- **Lens Coating:** Fully Multi-Coated (FMC)
- **Optical Glass:** 7 groups of 10 imported optical glass elements
- **Prism Type:** Schmidt roof prism
- **Additional Technologies:** Edge ink coating, APO achromatic lens technology
- **Transmittance:** Greater than 99.5%
- **Reflectivity:** Less than 0.3%
- **Product Dimensions (L x W x H):** 6 x 3 x 3 centimetres

- **Package Dimensions (L x W x H):** 31.6 x 23.5 x 6.1 centimetres
- **Package Weight:** 0.26 Kilograms
- **Compatibility:** Smartphones with width 70-100 mm (2.8-3.9 inches)

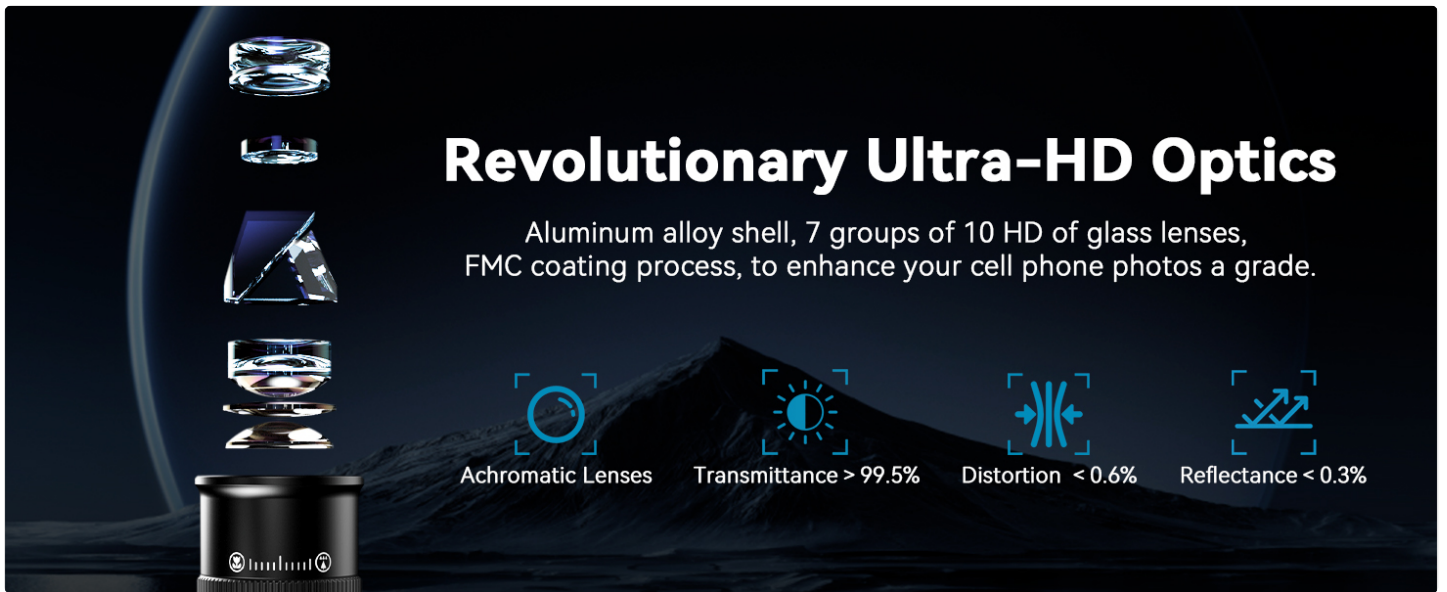


Figure 18: Details on the advanced optical design and coating for superior image quality.



Figure 19: The lens is compatible with 37mm filters (not included) and features a lightweight, portable design.

WARRANTY AND SUPPORT

APEXEL offers a 1-year return service for this product. For any issues, questions, or to request replacement accessories (e.g., if the clip does not match your phone), please contact APEXEL customer support. They aim to reply within 24 hours. For further information and support, visit the official APEXEL store: [APEXEL Store on Amazon](#).