

[Manuals.plus](#) /

> [Nikon](#) /

> Nikon Z50 II with Wide-Angle Zoom Lens | Compact mirrorless Stills/Video Camera with Easy Color presets and Wireless Photo Sharing  
| Nikon USA Model Z 50II w/16-50 Kit

## Nikon Z 50II w/16-50 Kit

# Nikon Z50 II User Manual

Model: Z 50II w/16-50 Kit | Brand: Nikon

## INTRODUCTION

---

This manual provides essential information for operating your Nikon Z50 II mirrorless camera with the NIKKOR Z DX 16-50mm f/3.5-6.3 VR lens. The Z50 II is a compact and versatile camera designed for capturing stunning stills and high-quality video. It combines excellent image quality with user-friendly features, making it ideal for everyday photography, video creation, and live streaming.

## SETUP

---

### 1. Unboxing and Initial Inspection

Carefully unpack all components from the box. Ensure the following items are present:

- Nikon Z50 II Camera Body
- NIKKOR Z DX 16-50mm f/3.5-6.3 VR Lens
- EN-EL25a Rechargeable Lithium-ion Battery
- Nikon Camera Strap
- USB Type-C Charging and Transfer Cable



Figure 1: Included components of the Nikon Z50 II w/16-50 Kit.

## 2. Battery Installation and Charging

Insert the EN-EL25a battery into the battery compartment located at the bottom of the camera. Ensure it clicks into place. Charge the battery fully before first use using the supplied USB Type-C cable connected to a compatible USB power adapter (not included) or a computer.

## 3. Attaching the Lens

Align the white mounting mark on the NIKKOR Z DX 16-50mm f/3.5-6.3 VR lens with the white mounting mark on the camera body. Rotate the lens counter-clockwise until it clicks securely into place. To remove, press the lens release button on the camera body and rotate the lens clockwise.



Figure 2: Nikon Z50 II camera body and NIKKOR Z DX 16-50mm lens.

## OPERATING THE CAMERA

---

### 1. Power On and Basic Controls

Turn the camera on using the power switch located around the shutter button. The Z50 II features intuitive buttons and dials for easy operation. The rear LCD screen is a flip-out touchscreen, perfect for various shooting angles, including selfies and vlogging.



Figure 3: Rear controls and flip-out touchscreen of the Nikon Z50 II.

# Powerful video features.



**4K/60p**

---

**Electronic  
Stabilization**

---

**Streaming-  
ready**

---

**Flexible Color  
Grading with  
N-Log**

Figure 4: Easy, immersive operation with intuitive buttons and dials, and a flip-out touchscreen.

## 2. Autofocus System

The Z50 II features an intelligent autofocus system capable of detecting and tracking various subjects, including people, dogs, cats, birds, and vehicles. Dedicated bird and airplane modes enhance autofocus accuracy for specific scenarios. This ensures fast and accurate focus, even with moving subjects.

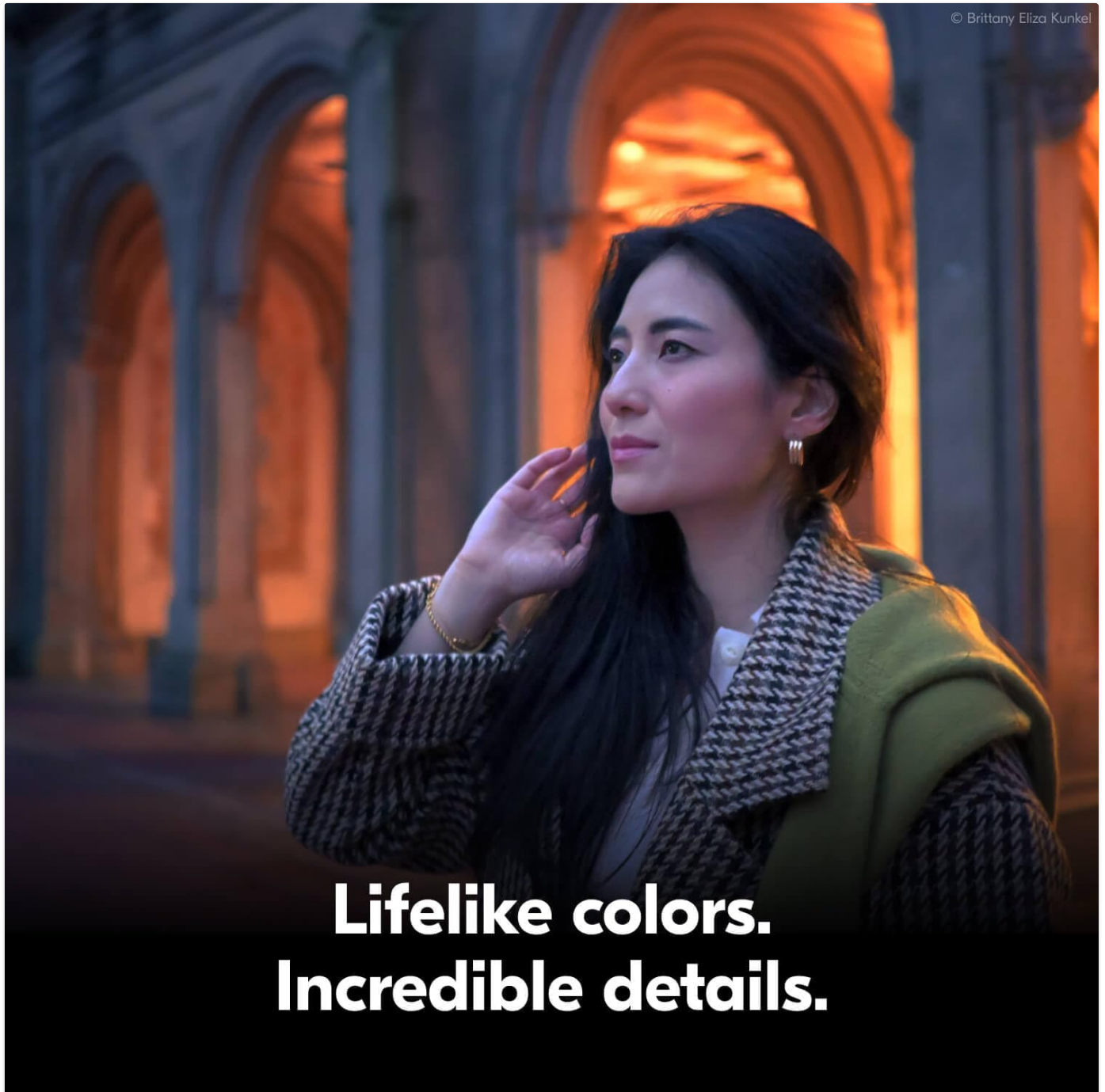


# Explore creative color styles in the moment with the Picture Control button.

Figure 5: Intelligent autofocus with subject detection options.

## 3. Picture Control Presets

Explore your creative vision with 31 built-in Picture Control presets. These presets are designed to give your photos and videos distinct looks. You can also create and save your own custom presets or download bespoke Cloud Picture Controls directly to your Z50 II from Nikon Imaging Cloud. Experiment with different looks in real-time as you shoot.



**Lifelike colors.  
Incredible details.**

**Figure 6:** Explore creative color styles using the Picture Control button.

# Easy, immersive operation.

**Compact &  
Lightweight**

**Intuitive  
Buttons & Dials**

**Flip-out  
Touchscreen**



Figure 7: Download creative color presets to your camera from Nikon Imaging Cloud.

## 4. Video Recording

Capture stunning video with the Z50 II. It supports 4K UHD/60p recording and in-camera 120p slow-motion in Full HD. Built-in electronic VR (Vibration Reduction) helps stabilize footage, and a product review mode is available for specific video needs. The camera also offers flexible color grading with N-Log for advanced video workflows.



©Julia Nimke

# High-speed capture.

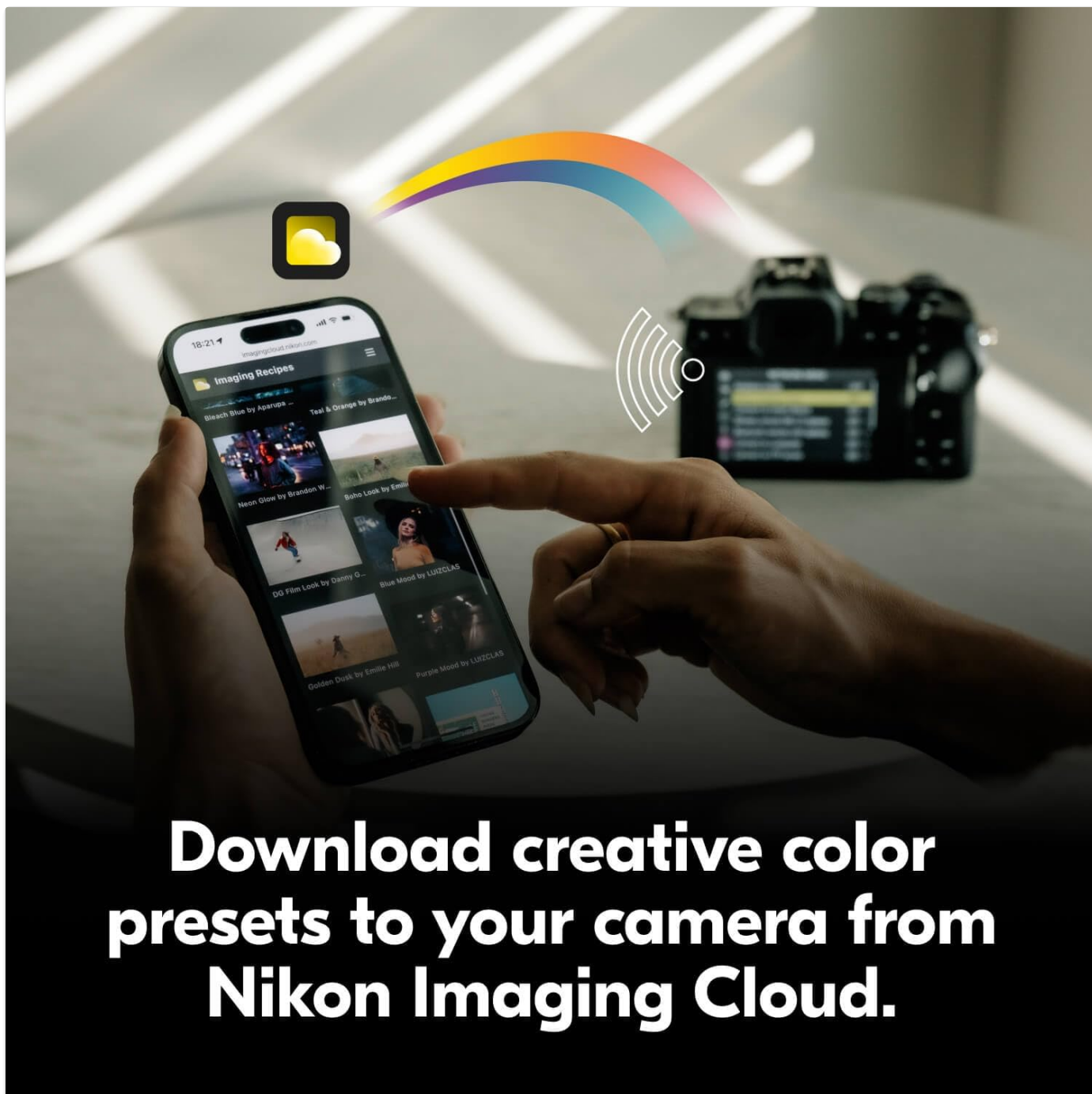
30 photos per second.

The image features a central photograph of a person in mid-air, jumping towards a basketball hoop. The person is silhouetted against a bright, low sun, creating a dramatic effect. A basketball is suspended in the air above the person's hands. Below this main image is a horizontal sequence of 15 smaller, slightly offset frames, each showing a different moment of the jump, illustrating the high-speed capture capability. The background shows a building and trees under a clear sky.

Figure 8: Powerful video features of the Nikon Z50 II.

## 5. Wireless Connectivity and Sharing

The Z50 II allows for easy sharing of photos and videos to your smart device in seconds using the free Nikon SnapBridge app. This built-in wireless photo sharing capability simplifies your workflow.



# Download creative color presets to your camera from Nikon Imaging Cloud.

Figure 9: Send photos to your phone or the cloud, right from the camera.

## MAINTENANCE

---

### 1. Cleaning the Camera and Lens

- Use a soft, lint-free cloth to clean the camera body.
- For the lens, use a lens brush or blower to remove dust, then gently wipe with a micro-fiber lens cloth and lens cleaning solution if necessary.
- Avoid touching the sensor directly. If sensor cleaning is required, consult a professional service center.

### 2. Battery Care

- Store batteries in a cool, dry place when not in use.
- Avoid fully discharging the battery regularly to prolong its lifespan.
- Use only genuine Nikon batteries and chargers.

### 3. Storage

When storing the camera for extended periods, remove the battery and store the camera in a dry, well-ventilated area, preferably in a camera bag with desiccant to prevent mold and mildew.

## TROUBLESHOOTING

---

If you encounter issues with your Nikon Z50 II, consider the following common troubleshooting steps:

- **Camera not powering on:** Ensure the battery is fully charged and correctly inserted.
- **Images are blurry:** Check focus settings, ensure the lens is clean, and verify sufficient lighting.
- **Memory card error:** Ensure the memory card is inserted correctly and is not full or corrupted. Try reformatting the card (this will erase all data).
- **Wireless connection issues:** Restart both the camera and your smart device. Ensure the SnapBridge app is up to date.

For more detailed troubleshooting or complex issues, please refer to the comprehensive online manual available on the official Nikon support website or contact Nikon customer service.

## SPECIFICATIONS

---

Feature	Detail
Product Dimensions	1.26 x 2.76 x 2.76 inches
Item Weight	1.51 pounds
Item Model Number	1786
Batteries	1 Lithium Ion batteries required (included)
Manufacturer	Nikon
Special Feature	Pop-Up Flash
Included Components	Camera Body & Lens
Model Name	Z50II 16-50mm Lens Kit
Compatible Devices	Smartphones, Nikon Z series cameras and accessories
Exposure Control Type	Automatic, Manual
Min Shutter Speed	30 Seconds
Viewfinder Magnification	1.02x
Sensor	20.9-megapixel DX format (APS-C size)
Video Resolution	4K UHD/60p, Full HD 120p (slow-motion)

## WARRANTY AND SUPPORT

---

Your Nikon Z50 II camera is covered by Nikon's standard limited warranty. Please refer to the warranty card included with your product for specific terms and conditions. For technical support, software updates, or to download the full user

manual, please visit the official Nikon support website:

**[Nikon USA Service and Support](#)**



© 2025 Nikon. All rights reserved. Information in this manual is subject to change without notice.