

Monster Monster N-Lite 203 AirLinks

Monster N-Lite 203 AirLinks Wireless Earbuds User Manual

Model: Monster N-Lite 203 AirLinks

PRODUCT OVERVIEW

The Monster N-Lite 203 AirLinks Wireless Earbuds are designed to deliver a high-fidelity audio experience with advanced features for daily use. These earbuds offer immersive stereo sound, clear call quality, and a comfortable, lightweight design, making them suitable for various activities from workouts to office meetings.





Image: The Monster N-Lite 203 AirLinks Wireless Earbuds, shown with their compact charging case. The earbuds are silver and white, designed for in-ear comfort, and the case is a matching silver with a green indicator light.

Key Features

- **Pure Monster Sound & Immersive Stereo:** Engineered with 10mm drivers and a unique digital audio processor, these earbuds provide rich, distortion-free sound with enhanced bass and clear details, supporting Qualcomm apt-X high-definition audio decoding.

Pure Monster Sound

Excellence inside out



Image: A woman wearing a Monster N-Lite 203 AirLinks earbud, with text "Pure Monster Sound" and "Excellence inside out," emphasizing the high-quality audio experience.

Superior Hi-Fi Stereo & Deep Bass

Pure balanced audio and clarity.
Immerse in the wonderful world of music



Image: An exploded diagram of the Monster N-Lite 203 AirLinks earbud, showcasing internal components such as the 10mm driver and the Bluetooth 5.3 chip, illustrating the superior Hi-Fi stereo and deep bass capabilities.

- **Crystal-Clear Calls & Bluetooth 5.3:** Equipped with two built-in microphones for clear call quality and advanced Bluetooth 5.3 technology for stable, fast connections up to 15 meters. Features aptX Low Latency for synchronized audio.
- **Featherweight & Ergonomic Design:** Each earbud weighs approximately 3.85g, offering a practically weightless feel. The ergonomic design ensures comfort for extended wear, with three sizes of soft rubber ear caps for a secure fit.

*Designed and engineered by Noel Lee and the Monster Design Team in the USA

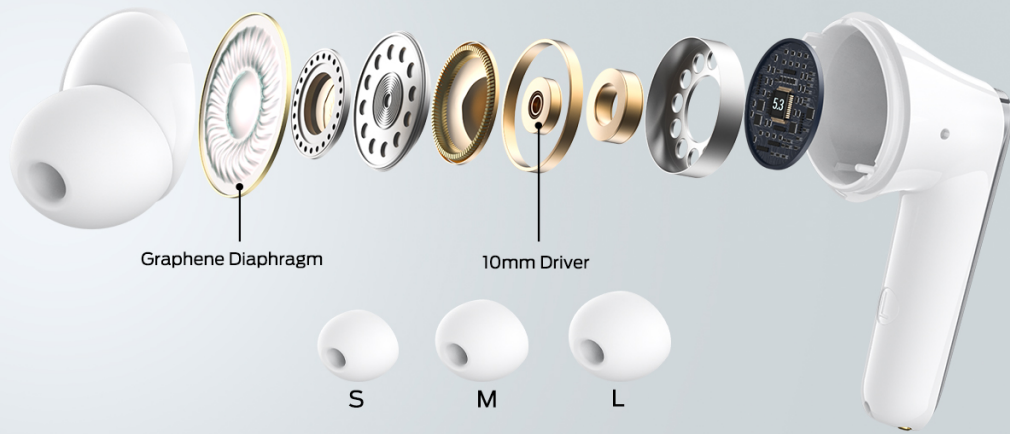


Image: A woman wearing Monster N-Lite 203 AirLinks earbuds, with text highlighting "Ergonomic Design" for prolonged wear and "Feather-Light Fit" (3.85g), emphasizing comfort and secure fit.

- **Extended Playtime & IPX6 Water-Resistant:** Enjoy up to 8 hours of playback on a single charge, with the compact charging case extending total playtime to 30 hours. An IPX6 water-resistant rating makes them suitable for sports and outdoor activities.
- **One-Step Pairing & Easy Touch Control:** Features automatic one-step pairing after initial connection. Intuitive touch controls on each earbud allow for managing music, calls, and voice assistants without needing to access your phone.

SETUP GUIDE

1. Initial Charging

Before first use, fully charge the earbuds and the charging case. Connect the provided USB-C charging cable to the charging port on the case and a compatible USB power source. The charging time is approximately 2 hours for a full charge.

30H Long Playtime

Long Battery life
No need to worry
about power outages

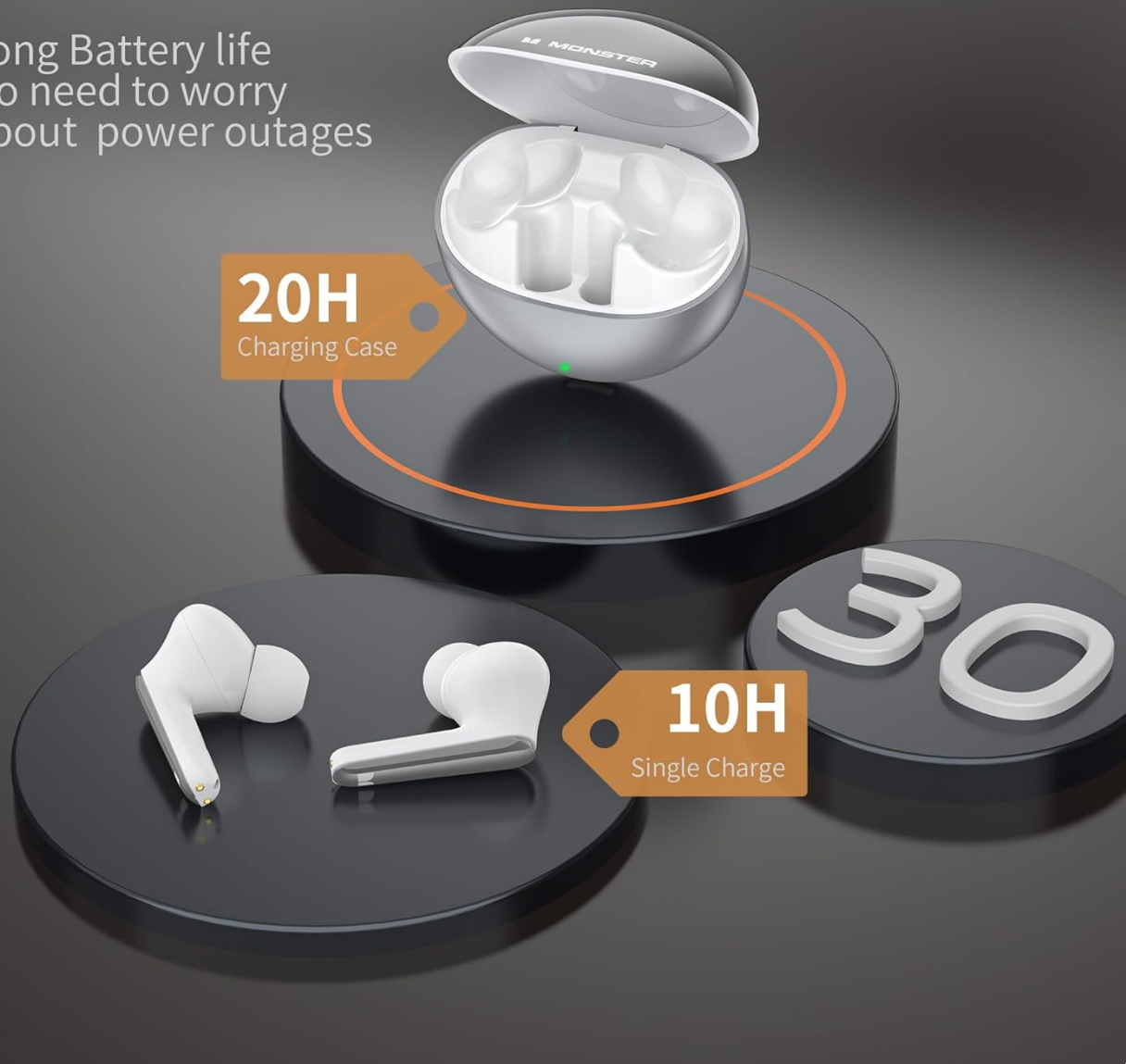


Image: An illustration showing the Monster N-Lite 203 AirLinks earbuds and charging case, highlighting the 30-hour total playtime with 10 hours from a single charge and 20 hours from the charging case. The case is shown on a charging pad, indicating its charging capability.

2. Pairing with Your Device

1. Ensure the earbuds are in the charging case and the case has sufficient power.
2. Open the charging case. The earbuds will automatically enter pairing mode, indicated by a flashing light on the earbuds (refer to LED indicator section for specific patterns).
3. On your device (smartphone, tablet, computer), enable Bluetooth and search for new devices.
4. Select "Monster N-Lite 203 AirLinks" from the list of available devices.
5. Once connected, the earbud indicator lights will turn off or show a solid light (refer to LED indicator section). The earbuds will automatically reconnect to the last paired device when removed from the case.



Latest Bluetooth 5.3

Fast and stable transmission without tangling providing an uninterrupted call and music experience.

Image: The Monster N-Lite 203 AirLinks earbuds are shown next to a smartphone displaying a call screen, with a Bluetooth symbol indicating active connection. This illustrates the fast and stable transmission provided by Bluetooth 5.3 technology.

3. Wearing the Earbuds

Select the ear tips that provide the most comfortable and secure fit. The earbuds come with three different sizes (S, M, L). Gently insert each earbud into your ear canal and twist slightly to secure them in place. A proper fit is crucial for optimal sound quality and noise isolation.

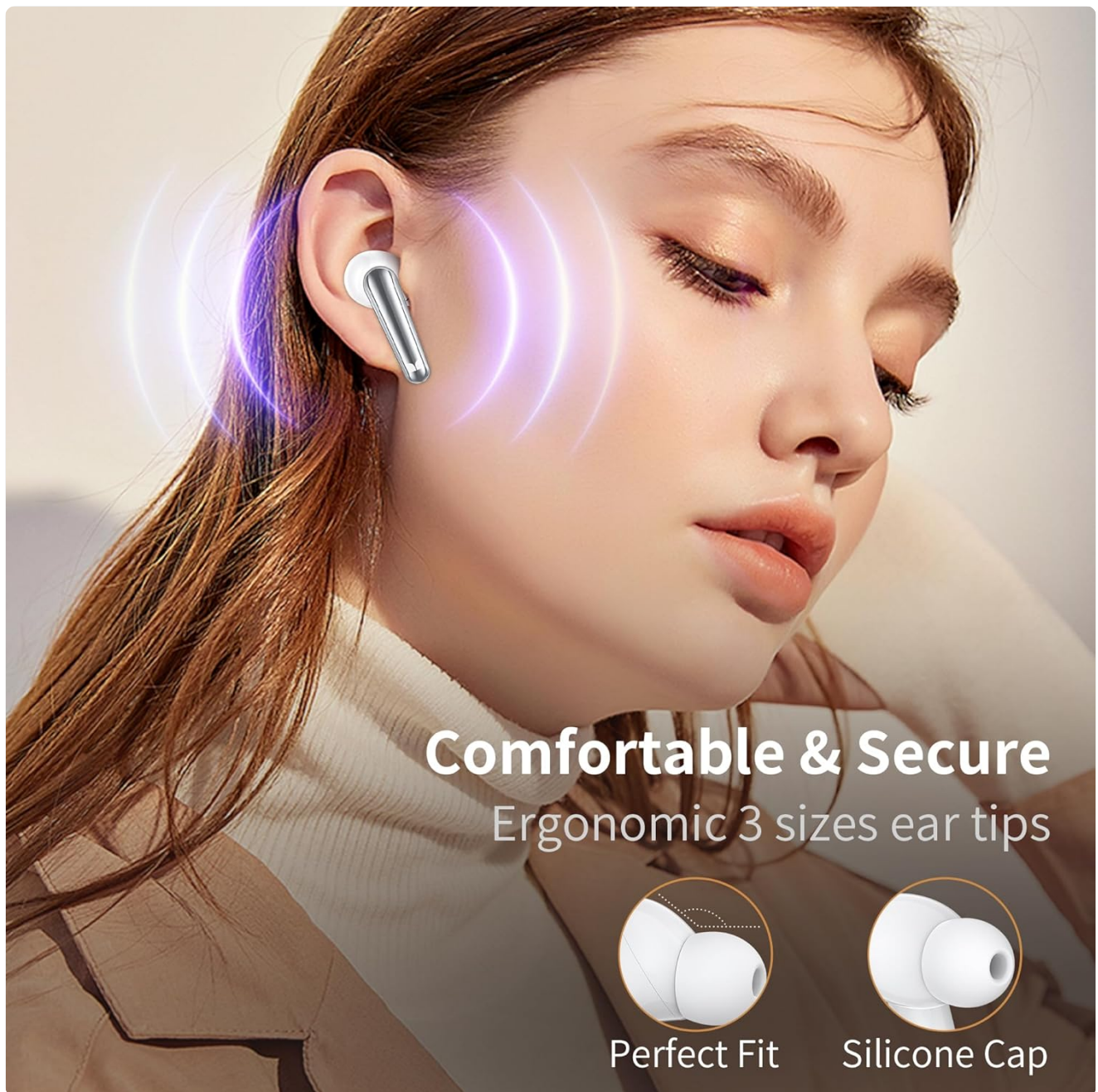


Image: A woman wearing a Monster N-Lite 203 AirLinks earbud, demonstrating the comfortable and secure fit. Insets show diagrams of "Perfect Fit" and "Silicone Cap" ear tips, emphasizing the ergonomic design and the availability of three ear tip sizes.

OPERATING INSTRUCTIONS

Touch Controls

The Monster N-Lite 203 AirLinks earbuds feature intuitive touch controls on each earbud. The functions can be performed by tapping the touch-sensitive area on the stem of the earbud.

Action	Function
Single Tap (Left/Right Earbud)	Play/Pause Music, Answer/End Call
Double Tap (Right Earbud)	Next Track
Double Tap (Left Earbud)	Previous Track
Triple Tap (Left/Right Earbud)	Activate Voice Assistant

Action	Function
Long Press (Right Earbud)	Volume Up
Long Press (Left Earbud)	Volume Down
Long Press (During Incoming Call)	Reject Call

Making and Receiving Calls

The earbuds are equipped with built-in microphones for clear communication. When a call comes in, you can answer or reject it using the touch controls. Audio will automatically switch to the earbuds during a call.



Image: A man wearing a Monster N-Lite 203 AirLinks earbud, with visual cues indicating sound waves emanating from the earbud. An icon of a microphone and text "Built in MEMS microphone in each bud ensures a clear call" highlights the call quality feature.

MAINTENANCE AND CARE

- **Cleaning:** Regularly clean the earbuds and charging case with a soft, dry, lint-free cloth. Do not use abrasive

cleaners or solvents. For ear tips, remove them and clean with mild soap and water, then dry thoroughly before reattaching.

- **Water Resistance:** The earbuds are IPX6 water-resistant, meaning they can withstand powerful water jets. However, they are not designed for submersion. Avoid exposing the charging case to water. Always ensure earbuds are dry before placing them back in the charging case to prevent damage.
- **Storage:** When not in use, store the earbuds in their charging case to protect them and keep them charged. Store in a cool, dry place away from extreme temperatures.
- **Battery Care:** To prolong battery life, avoid fully discharging the earbuds and case frequently. Charge them regularly, even if not in constant use.

The Advanced Bluetooth 5.3

Support HSP, HFP, A2DP, AVRCP. Provides in-call stereo sound.

Greatly improve the transmission speed and providing you with a low-latency listening experience.

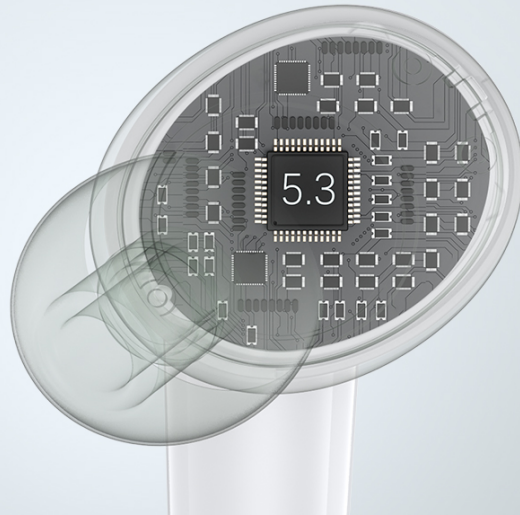


Image: A close-up of the Monster N-Lite 203 AirLinks earbuds with water droplets, illustrating their IPX6 water-resistant capability. Text highlights that they are versatile and durable for running, workouts, travel, and more.

TROUBLESHOOTING

If you encounter issues with your Monster N-Lite 203 AirLinks earbuds, refer to the following common solutions:

- **No Sound/Low Volume:**
 - Ensure earbuds are properly paired and connected to your device.
 - Check the volume level on both your device and the earbuds.
 - Clean any debris from the earbud speakers and ear tips.
 - Try resetting the earbuds (refer to manufacturer's website for specific reset instructions if not in manual).
- **Earbuds Not Pairing/Connecting:**
 - Ensure Bluetooth is enabled on your device and the earbuds are in pairing mode.
 - Move the earbuds closer to your device.
 - Forget the device from your phone's Bluetooth settings and try pairing again.
 - Ensure the earbuds and case are charged.
 - If connectivity issues persist at a distance (e.g., beyond 15 feet), this is within the typical range limitation for Bluetooth devices.
- **Poor Call Quality (Muffled Sound):**
 - Ensure the microphones are not obstructed.
 - Check your network signal strength.

- Ensure the earbuds are fully charged.
 - Some users have reported muffled sound on calls; ensure the earbuds are updated to the latest firmware if available.
- **Earbuds Not Charging:**
- Ensure the charging cable is securely connected to both the case and the power source.
 - Verify the power source is active.
 - Clean the charging contacts on both the earbuds and inside the case.
 - Try a different USB-C cable or power adapter.

SPECIFICATIONS

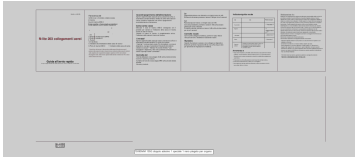
Feature	Detail
Model Name	Monster N-Lite 203 AirLinks
Connectivity Technology	Wireless (Bluetooth 5.3)
Bluetooth Range	Up to 49 Feet (approx. 15 meters)
Audio Driver Type	Dynamic Driver (10mm)
Frequency Range	20Hz - 20,000Hz
Battery Life (Single Charge)	Approx. 8 hours
Total Playtime (with Charging Case)	Up to 30 hours
Charging Time	Approx. 2 hours
Water Resistance Level	IPX6 Water Resistant
Control Type	Touch Control
Earbud Weight	Approx. 0.1oz (3.85g) per earbud
Included Components	1 x Monster N-Lite 203 AirLinks Wireless Earbuds, 1 x USB-C Charging Cable, 1 x Quick Start Guide
Material	Plastic
Color	Pearl Grey

WARRANTY AND SUPPORT

For warranty information and technical support, please refer to the Quick Start Guide included with your product or visit the official Monster website. Keep your purchase receipt as proof of purchase for any warranty claims. For further assistance, you may contact Monster customer service through their official channels. Details can typically be found on the product packaging or the brand's website.

Manufacturer: Monster

Model Number: Monster N-Lite 203 AirLinks



[Monster N-Lite 203 Airlinks Quick Start Guide](#)

A concise guide to setting up and using the Monster N-Lite 203 Airlinks wireless earbuds, covering pairing, controls, and basic functions.

lang:it **score:24** filesize: 572.76 K page_count: 1 document date: 2024-11-18