

Manuals+

[Q & A](#) | [Deep Search](#) | [Upload](#)

Manuals.plus /

› [Kavolet](#) /

› Kavolet MIDI Controller Pad User Manual

Kavolet Kavoletcqskyi0awu

Kavolet MIDI Controller Pad User Manual

Model: WORLDE ORCA PAD16 (Kavoletcqskyi0awu)

Brand: Kavolet

INTRODUCTION

Thank you for choosing the Kavolet MIDI Controller Pad, also known as the WORLDE ORCA PAD16. This compact and versatile MIDI controller is designed for musicians, producers, and DJs, offering a powerful tool for music production and performance. Featuring 48 backlit drum pads and 18 assignable knobs, it provides extensive control and creative possibilities. This manual will guide you through the setup, operation, and maintenance of your new MIDI controller.

WHAT'S IN THE BOX

Please check the package contents to ensure all items are present:

- 1 x MIDI Controller Pad (WORLDE ORCA PAD16)
- 1 x USB Cable
- 1 x User Quick Guide

SETUP

Follow these steps to set up your Kavolet MIDI Controller Pad:

1. **Connect the Controller:** Connect the MIDI Controller Pad to your computer (laptop or desktop) using the included USB cable. The device is USB powered, so no external power source is needed. If connecting to a USB hub, ensure it is a powered USB3.0 hub; otherwise, the controller may not work properly.
2. **Open Your DAW:** Launch your Digital Audio Workstation (DAW) software (e.g., Ableton Live).
3. **Configure MIDI Settings:** Open your DAW's Preferences or Options, then navigate to the MIDI/Sync or

Controller settings. Select your controller device to enable communication with your software. For detailed mapping settings, refer to your DAW's documentation or the manufacturer's website.



Figure 1: Device Setup Diagram. The image illustrates how to connect the MIDI Controller Pad to a notebook using the provided USB cable, highlighting the USB connection point on the controller and the notebook.

System Requirements

- Windows 11/10/8/7/XP/Vista
- Mac OS X 10.3.9 and better

Compatible with Win 11/10/8/7/XP/Vista and Mac OSX or greater



Figure 2: Compatibility. This image shows the MIDI Controller Pad connected to a laptop, with text indicating its compatibility with Windows 11/10/8/7/XP/Vista and Mac OSX or greater.

OPERATING INSTRUCTIONS

The Kavolet MIDI Controller Pad offers a range of features for dynamic music creation:

Pads and Knobs

- **RGB Backlit Drum Pads:** The controller features three sets of 16 high-quality velocity-sensitive pads with RGB backlighting. These pads respond to your touch, allowing for expressive drumming and sample triggering. The RGB lighting provides visual feedback and can be customized.
- **Assignable Knobs:** Includes three sets of 6 assignable knobs. These can be mapped to control various parameters within your DAW, such as volume, pan, effects sends, or instrument parameters, offering extensive customization and control over your music production or performance.

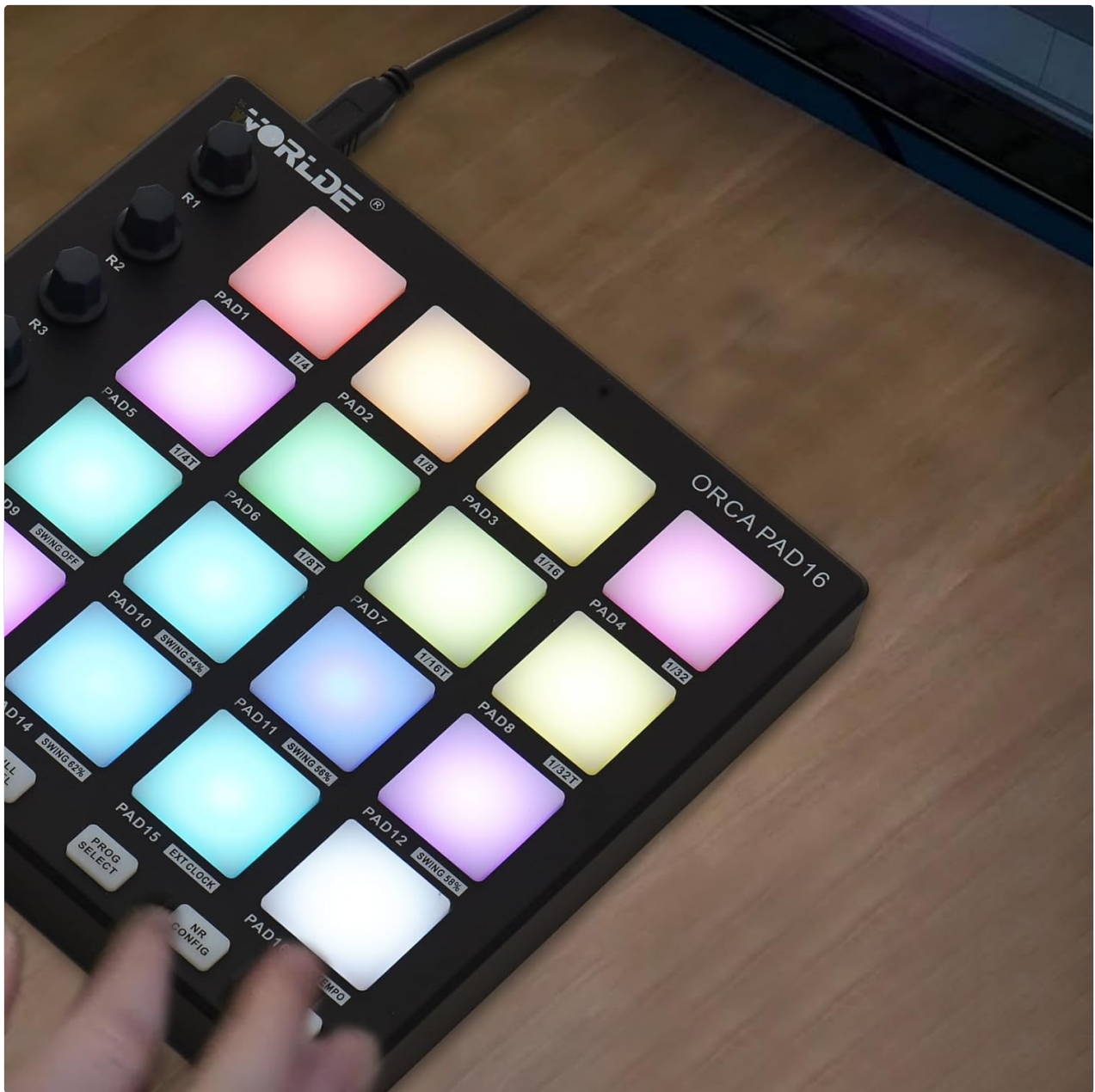


Figure 3: RGB Backlit Pads. A close-up shot of the MIDI Controller Pad highlighting the vibrant RGB backlighting of its drum pads, showcasing different colors.

Functional Buttons

The controller includes several functional buttons that enhance its musical applications:

- **Program Select:** Allows for selection of different programs or presets.
- **Note Repeat:** Enables automatic repetition of notes for rhythmic effects.
- **Full Level:** Ensures all triggered notes play at maximum velocity, regardless of how hard the pad is hit.
- **Control Bank/Reset (CTRL BANK):** Used for switching control banks or resetting parameters.
- **Pad Bank (PAD BANK):** Switches between different sets of pad assignments.
- **Note Repeat Configuration (NR CONFIG):** Configures the note repeat function.
- **Tap Tempo (TAP TEMPO):** Allows for setting the tempo by tapping.

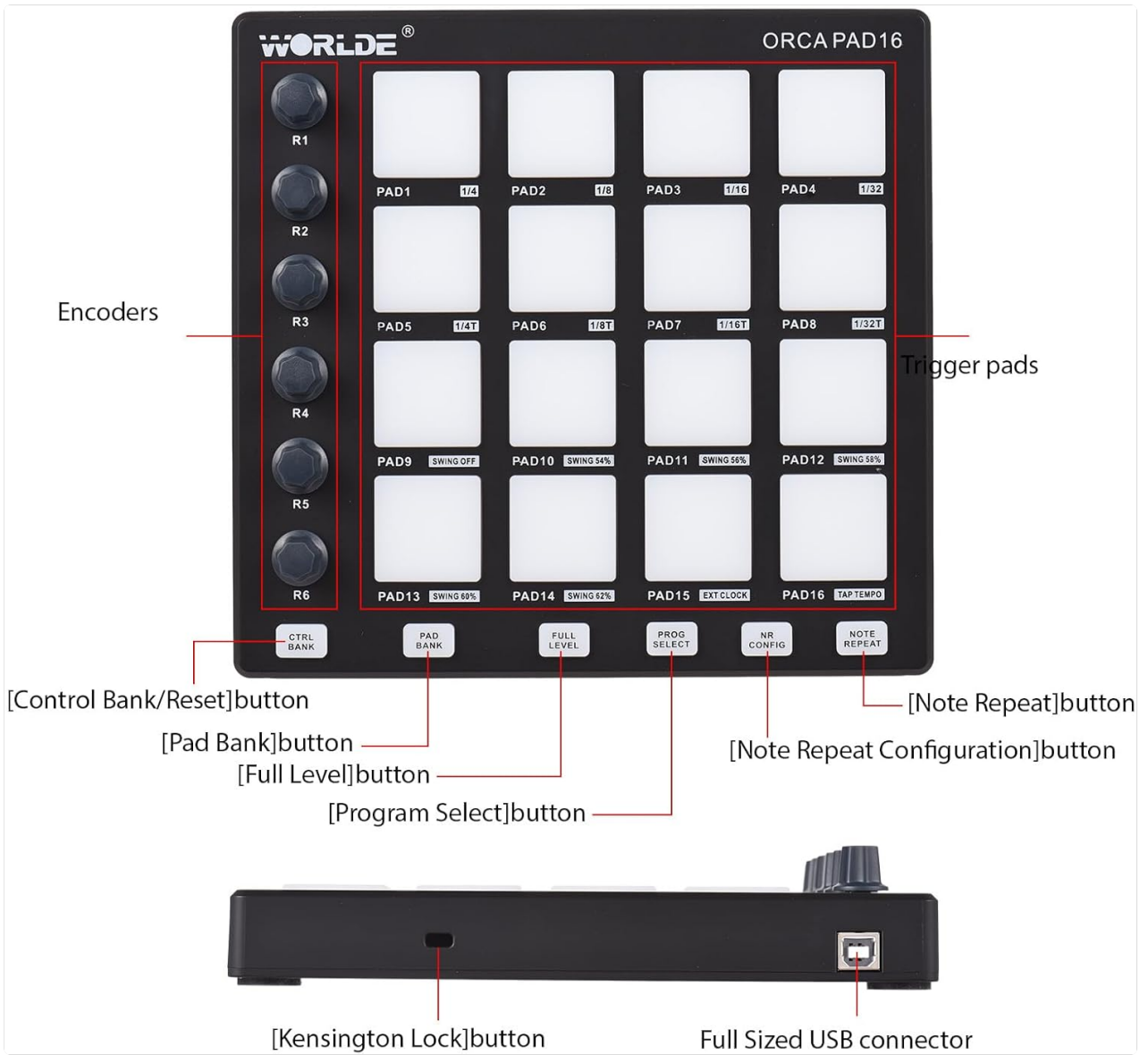


Figure 4: Control Layout. This diagram provides a clear overview of the WORLDE ORCA PAD16, labeling its key components including the encoders, trigger pads, and dedicated buttons for functions like Control Bank, Pad Bank, Full Level, Program Select, Note Repeat Configuration, and Note Repeat.

Worlde ORCA PAD16 MIDI Controller



Figure 5: In Use. This image shows a user actively engaging with the WORLDE ORCA PAD16 MIDI Controller, which is connected to a laptop, illustrating its practical application in a music production environment.

SPECIFICATIONS

Feature	Description
Brand	Kavolet (WORLDE)
Model Name	WORLDE ORCA PAD16 (Kavoletcqskyi0awu)
Power Supply	USB connector
Current Consumption	100 mA or less
Number of Keyboard Keys	48 (16 pads x 3 banks)
Assignable Knobs	18 (6 knobs x 3 banks)

Feature	Description
Connectivity Technology	USB
Hardware Interface	USB
Compatible Devices	Laptop, Desktop
Supported Software	Ableton Live (and other MIDI-compatible DAWs)
Hardware Platform	PC/Mac
Item Weight	580g / 20.4oz (1.56 pounds)
Dimensions (L x W x H)	19.9 x 19 x 3.9 cm / 7.83 x 7.48 x 1.54 inches



Figure 6: Product Dimensions. This image clearly labels the length (19.9cm/7.83in), width (19cm/7.48in), and height (3.9cm/1.54in) of the WORLDE ORCA PAD16 MIDI Controller.

TROUBLESHOOTING

If you encounter issues with your Kavolet MIDI Controller Pad, consider the following common solutions:

- **Controller Not Recognized:**

- Ensure the USB cable is securely connected to both the controller and your computer.
- Try a different USB port on your computer.
- If using a USB hub, ensure it is a powered USB3.0 hub.
- Restart your computer and DAW software.
- Check your DAW's MIDI settings to ensure the controller is enabled and selected.

- **Pads/Knobs Not Responding:**

- Verify that the controller is recognized by your DAW (see above).
- Check the MIDI mapping within your DAW to ensure the pads and knobs are correctly assigned to the desired functions.
- Ensure no other software is interfering with the MIDI connection.

- **No Sound Output:**

- The MIDI controller sends MIDI data, not audio. Ensure you have a virtual instrument or sound source loaded in your DAW and that its audio output is correctly routed.
- Check your DAW's audio settings and your computer's sound output.

- **Inconsistent Pad Velocity:**

- Ensure the 'Full Level' button is not engaged if you desire velocity sensitivity.
- Clean the pad surfaces if they feel sticky or unresponsive.

If problems persist, consult the manufacturer's website for updated drivers or support resources.

MAINTENANCE

To ensure the longevity and optimal performance of your MIDI Controller Pad, follow these maintenance guidelines:

- **Cleaning:** Use a soft, dry, lint-free cloth to wipe down the surface of the controller. For stubborn dirt, slightly dampen the cloth with water. Avoid using harsh chemicals, abrasive cleaners, or solvents, as these can damage the finish and components.
- **Storage:** When not in use, store the controller in a clean, dry environment away from direct sunlight, extreme temperatures, and excessive humidity.
- **Handling:** Handle the controller with care. Avoid dropping it or subjecting it to strong impacts, which can damage internal components.
- **Connectivity:** Always grasp the USB plug, not the cable, when disconnecting to prevent damage to the cable or port.

WARRANTY AND SUPPORT

For warranty information and technical support, please refer to the documentation included with your product or visit the official Kavolet or WORLDE website. Warranty terms typically cover manufacturing defects for a

specified period from the date of purchase. Keep your proof of purchase for warranty claims.

© 2024 Kavolet. All rights reserved. Product specifications are subject to change without prior notice.