

## Antec CX700

# ANTEC CX700 ATX Mid Tower Gaming Case User Manual

Model: CX700 | Brand: Antec

## INTRODUCTION

This manual provides comprehensive instructions for the setup, operation, maintenance, and troubleshooting of your ANTEC CX700 ATX Mid Tower Gaming Case. Please read this manual carefully before beginning installation to ensure proper assembly and optimal performance.



Figure 1: ANTEC CX700 ATX Mid Tower Gaming Case. This image displays the overall design of the case, highlighting its panoramic glass panels and the vibrant ARGB fans visible through the transparent surfaces.

## PACKAGE CONTENTS

Verify that all components are present in the package:

- ANTEC CX700 ATX Mid Tower Gaming Case
- Accessory Box (screws, cable ties, standoffs)
- User Manual (this document)

- Pre-installed ARGB Fans (3 x 120mm reverse fans on PSU shroud, 2 x 120mm reverse fans on right side, 1 x 120mm fan in rear)

## SETUP AND INSTALLATION

---

Follow these steps for proper installation of your PC components into the CX700 case.

### 1. Preparing the Case

1. **Remove Side Panels:** The CX700 features tool-free panel design. Gently pull the tempered glass side panel (left) and the steel side panel (right) to detach them.
2. **Accessory Box:** Locate the accessory box inside the case, which contains all necessary screws and mounting hardware.



Figure 2: Interior view of the ANTEC CX700 case. This image illustrates the spacious interior, fan mounting locations, and the layout for component installation.

### 2. Motherboard Installation

1. **Install Standoffs:** Ensure the correct standoffs are installed for your motherboard form factor (ATX, Micro-ATX, ITX).
2. **Mount Motherboard:** Carefully place your motherboard onto the standoffs and secure it with the provided screws.

### 3. Power Supply Unit (PSU) Installation

1. **Position PSU:** Slide the PSU into its designated compartment at the bottom rear of the case.
2. **Secure PSU:** Fasten the PSU with screws from the rear of the case. The PSU mount includes EVA anti-vibration foams.

### 4. Storage Drive Installation

The CX700 supports 2 x 3.5"/2.5" drive mounts and 2 x 2.5" drive mounts.

1. **3.5"/2.5" Drives:** Utilize the drive cages located near the PSU shroud.

2. **2.5" Drives:** Mount SSDs on the dedicated 2.5" brackets behind the motherboard tray.

## 5. Graphics Card (GPU) Installation

1. **Remove PCI Slot Covers:** Remove the necessary reusable PCI slot covers from the rear of the case.
2. **Insert GPU:** Carefully insert your GPU into the PCIe slot on the motherboard and secure it with screws. The case supports GPUs up to 410mm in length (270mm with side radiator).

## 6. Cable Management

The CX700 provides 23mm of cable management space behind the motherboard tray. Route cables neatly using the provided cable ties and routing holes to ensure optimal airflow and a clean build.

## OPERATING INSTRUCTIONS

---

Once all components are installed and cables are connected, you can power on your system.

- **Power Button:** Located on the front access panel. Press to power on or off your system.
- **LED Control Button:** Also on the front access panel. Use this button to cycle through various ARGB lighting modes for the pre-installed fans.
- **USB Ports:** The front panel includes 1 x USB 3.0 and 1 x Type-C 3.2 Gen 2 port for convenient peripheral connectivity.
- **Audio Jack:** A combined headphone/mic combo jack is available on the front panel.



Figure 3: Front I/O Panel of the ANTEC CX700. This image highlights the accessible ports and control buttons for user convenience.

## MAINTENANCE

---

Regular maintenance ensures the longevity and optimal performance of your gaming case.

- **Dust Cleaning:** Periodically clean dust filters and interior components using compressed air or a soft brush. Dust accumulation can impede airflow and cooling performance.
- **Panel Cleaning:** Wipe the tempered glass panels with a soft, lint-free cloth and a mild glass cleaner. Avoid abrasive

materials.

- **Cable Management Check:** Ensure cables remain neatly organized and do not obstruct airflow.

## TROUBLESHOOTING

This section addresses common issues you might encounter.

- **No Power:**
  - Check if the PSU is properly connected to the wall outlet and the motherboard.
  - Ensure the power button cable from the case is correctly connected to the motherboard's front panel header.
- **Fans Not Spinning/ARGB Not Lighting:**
  - Verify fan power cables are securely connected to the motherboard or fan controller.
  - Ensure ARGB cables are properly connected to the motherboard's ARGB header or the integrated LED controller.
  - Use the LED control button on the front panel to cycle through modes.
- **Poor Airflow/Overheating:**
  - Clean dust filters and internal components.
  - Ensure fans are oriented correctly for optimal airflow (intake/exhaust).
  - Check for obstructions to airflow inside the case.

## SPECIFICATIONS

Detailed technical specifications for the ANTEC CX700 ATX Mid Tower Gaming Case.

Feature	Specification
Dimensions (D x W x H)	436 x 210 x 486mm
Form Factor	Mid Tower
Materials	Steel + Glass
Motherboard Support	ATX, Micro-ATX, ITX
Front Access & Controls	Power Button, LED Control Button, USB 3.0 x 1, Type-C 3.2 Gen 2 x 1, Headphone/Mic Combo Jack
Side Panel	4mm Tempered Glass
Drive Bays (3.5"/2.5")	2/1
Drive Bays (2.5")	2
Expansion Slots	7
Fan Support (Top)	3 x 120mm / 2 x 140mm

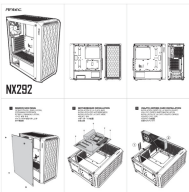
Feature	Specification
Fan Support (Side)	2 x 120mm
Fan Support (PSU Shroud)	3 x 120mm
Fan Support (Rear)	1 x 120mm
Included Fans	3 x 120mm fixed mode RGB reverse fans (PSU shroud), 2 x 120mm fixed mode RGB reverse fans (right side), 1 x 120mm fixed mode RGB fan (rear)
Radiator Support (Top)	Up to 360mm
Radiator Support (Side)	Up to 240mm (GPU length limited to 270mm with side radiator)
CPU Cooler Height	Max 160mm
GPU Length	Max 410mm (270mm with side radiator)
PSU Length	Max 210mm (with HDD cage), 270mm (without HDD cage)
Cable Management Space	23mm

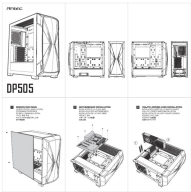
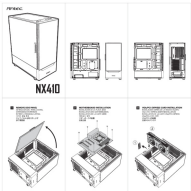
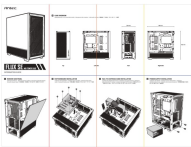
## WARRANTY AND SUPPORT

For warranty information and technical support, please visit the official Antec website or contact their customer service. Keep your proof of purchase for warranty claims.  
Official Antec Website: [www.antec.com](http://www.antec.com)

© 2025 Antec. All rights reserved.  
This manual is subject to change without notice.

## Related Documents

	<p><a href="#">Antec NX292 ATX Gaming PC Case - Manual and Overview</a></p> <p>User manual and overview for the Antec NX292 ATX mid-tower gaming PC case, highlighting its features like fixed RGB fans and tempered glass side panel, along with storage support for HDD and SSD.</p>
---	--

	<p><a href="#">Antec DP505 PC Case - Gaming Mid Tower with EATX Support</a></p> <p>Antec DP505 is a white gaming mid-tower PC case featuring EATX support, Type-C Gen2, ARGB fans, PWM control, radiator support, GPU bracket, and tempered glass.</p>
	<p><a href="#">Antec NX410 ATX Mid-Tower PC Case - Installation Manual and Overview</a></p> <p>A comprehensive guide to the Antec NX410 ATX mid-tower computer case, covering specifications, features, and detailed installation instructions for PC builders. Learn how to assemble your system with this informational manual.</p>
	<p><a href="#">Antec Flux SE PC Case User Manual and Overview</a></p> <p>Comprehensive guide to the Antec Flux SE mid-tower PC case, covering features, specifications, and installation instructions. Learn about its airflow design, cooling support, and build quality for optimal PC performance.</p>

Documents - Antec – CX700

tehnoteka

https://tehnoteka.rs

Uputstvo za upotrebu (EN)

ANTEC kućište CX700 RGB Elite



Tehnoteka je online destinacija za upoređivanje cena i karakteristika bele tehnike, potrošačke elektronike i IT uređaja kod trgovinskih lanaca i internet prodavnica u Srbiji. Naša stranica vam omogućava da istražite najnovije informacije, detaljne karakteristike i konkurentne cene proizvoda.

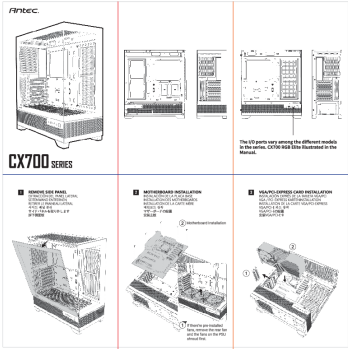
Posetite nas i uživajte u ekskluzivnom likovnoj pametne kupovine klikom na link: <https://tehnoteka.rs/antec-kućiste-cx700-rgb-elite-akcija-cena/>

[pdf]

Uputstvo za upotrebu EN ANTEC kućište CX700 RGB Elite Tehnoteka je online destinacija upoređivanje cena i karakteristika bele tehnike potrošačke elektronike IT uređaja kod trgovinskih lanaca internet uputstvo en antec kuciste cx700 rgb elite 6796349e6f656api tehnoteka rs 2025 01 uputstvo 6796349e6f656 |||

https://tehnoteka.rs Uputstvo za upotrebu EN ANTEC kuiste **CX700** RGB Elite Tehnoteka je online destinacija za uporeivanje cena i karakteristika bele tehnike, potrosacke elektronike i IT ureaja kod trgovinskih lanaca i internet prodavnica u Srbiji. Nasa stranica vam omoguava da istrazite najnovije i...

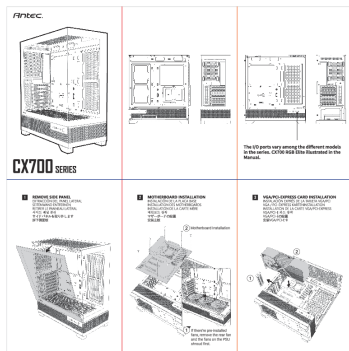
lang:hr score:30 filesize: 3.38 M page\_count: 4 document date: 2025-01-26



[Antec CX700 Series PC Case Installation Guide](#)

Comprehensive installation guide for the Antec CX700 Series PC case, detailing steps for installing motherboards, graphics cards, power supplies, storage drives, fans, and liquid cooling radiators.

lang:hr score:26 filesize: 7.98 M page\_count: 2 document date: 2024-03-08



## [pdf] User Manual

240308 Antec CX700 Series Manual OL Navodila za uporabo in varnost 3395852 midi tower Gaming ohišje 3 vnaprej nameščeni ventilatorji filter prahu MegaShop spletna trgovina Megashop si navodila antec cx700 gaming ohišje namesceni asset conrad media10 add 160267 c1 en 003395852ML00 |||

...

lang:hr score:18 filesize: 8.02 M page\_count: 2 document date: 2024-03-08











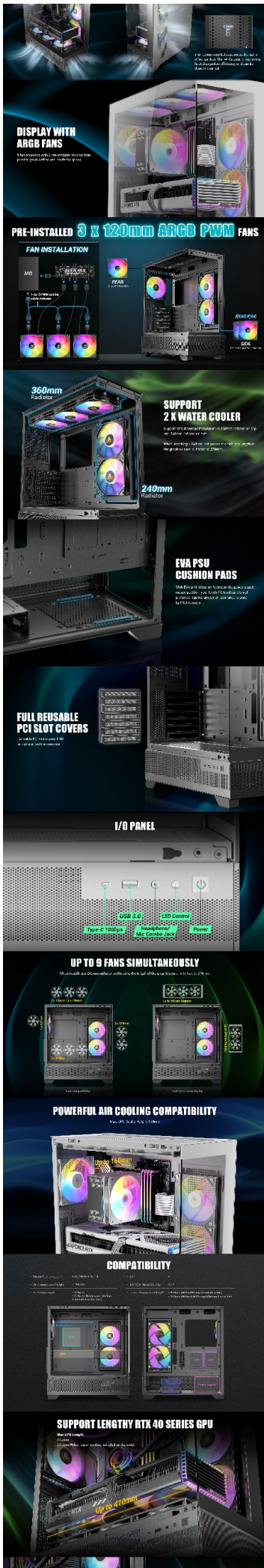
[pdf] Flyer

Antec CX700 ARGB antec â° product case C Flyer EN 240523 documents ||| |||

...

lang:hr score:14 filesize: 15.42 M page\_count: 1 document date: 2024-05-23






[pdf]

Télécharger le fichierBoitier Moyen Tour ATX Antec CX700 RGB avec panneaux vitrés Blanc Le Havre et  
Gonfrevillepresentation de la gamme pour antec cx700 argb blanc 129901foteam ressources site  
document product presentation 12990 |||

...

lang:hr score:13 filesize: 15.42 M page\_count: 1 document date: 2024-05-23


[illegible]




**ARGB EDITION**  
**CX700 ARGB**  
**CX700 ARGB** - WHITE  
100% Steel, 400 x 400 x 150 mm




**PANORAMIC 270° VIEW**  
The CX700 ARGB Edition is a 100% steel case with a panoramic 270° view. It features a mesh front panel, a mesh side panel, and a mesh top panel. The case is designed for easy access to all components, including the motherboard, RAM, and storage drives.




**TOOL-FREE PANELS**  
The CX700 ARGB Edition features tool-free panels for easy access to all components. The front panel, side panel, and top panel can be removed without the need for any tools.




**VERTICAL COOLING WITH MASSIVE AIR INTAKE**  
The CX700 ARGB Edition features vertical cooling with massive air intake. The case is designed to allow for easy airflow, ensuring that all components are kept cool.




**DISPLAY WITH ARGB FANS**  
The CX700 ARGB Edition features a display with ARGB fans. The display is located on the front panel and can be used to monitor system status and control the RGB lighting.




**PRE-INSTALLED 3 x 120mm ARGB PWM FANS**  
The CX700 ARGB Edition features pre-installed 3 x 120mm ARGB PWM fans. The fans are located on the front panel and provide excellent cooling for the system.



**FAN INSTALLATION**  
The CX700 ARGB Edition features a fan installation diagram. The diagram shows the location of the fans and the connection to the motherboard.



**360mm Radiator**  
The CX700 ARGB Edition features a 360mm radiator. The radiator is located on the front panel and provides excellent cooling for the system.



**SUPPORT**  
The CX700 ARGB Edition features support for various components. The case is designed to accommodate a wide range of hardware, ensuring that your system is protected and cooled.





[pdf]

Tehnični podatki 3395852 Antec CX700 midi tower Gaming ohišje 3 vnaprej nameščeni ventilatorji filter prahu MegaShop spletna trgovina Megashop si tehnicni antec cx700 gaming ohišje namesceni asset conrad media10 add 160267 c1 en 003395852DS00 |||

lang:hr score:12 filesize: 15.43 M page\_count: 1 document date: 2024-05-23

