

Brightever YS-CGD20-01

Brightever Under Cabinet Lights Instruction Manual

MODEL: YS-CGD20-01

1. Introduction

Thank you for choosing Brightever Under Cabinet Lights. These LED rechargeable lights are designed to provide convenient and efficient illumination for various indoor spaces such as kitchens, bedrooms, closets, and hallways. Featuring motion sensor capabilities, stepless dimming, and multiple installation options, these lights enhance visibility and energy efficiency in your home.

2. What's in the Box

- 5 x Brightever Under Cabinet Lights
- Instruction Manual
- Mounting Hardware (screws and expansion anchors)
- Adhesive Metal Plates
- 3 x USB Charging Cables
- Warranty/Explanation Sheet

3. Product Specifications

Feature	Specification
Brand	Brightever
Model Number	YS-CGD20-01
Color Temperature	6500K (Cool White)
Battery Capacity	1500mAh (Rechargeable)

Feature	Specification
Brightness	150 Lumen
Dimming Range	10%-100% Stepless Dimming
Motion Sensor Detection Angle	120°
Motion Sensor Sensing Range	10FT
Auto-Off Time (Motion Sensor Mode)	20 seconds of inactivity
Charging Time	3-4 hours for full charge
Battery Life (Always On Mode)	Up to 10 hours (at 100% brightness)
Battery Life (Motion Sensor Mode)	35-60 days (sensing 10-20 times/day)
Material	Acrylic, Aluminum, Plastic
Item Dimensions (L x W x H)	7.78"L x 1.57"W x 0.39"H
Indoor/Outdoor Usage	Indoor

4. Setup and Installation

The Brightever Under Cabinet Lights offer three convenient installation methods:

Method 1: Magnetic Attachment

The lights have built-in powerful magnets. If your desired mounting surface is ferromagnetic (e.g., a metal refrigerator or shelf), you can directly attach the light to it.



Image: The light bar magnetically attaches to a metal surface, demonstrating Method 1 of installation.

Method 2: Adhesive Metal Plate

For non-ferromagnetic surfaces, use the provided adhesive metal plates.

1. Clean the installation area thoroughly to ensure it is dry and free of dust.
2. Peel off the protective film from the adhesive side of the metal plate.
3. Attach the metal plates to the desired location. Ensure they are aligned with the magnets on the back of the light.

4. Snap the light onto the attached metal plates.

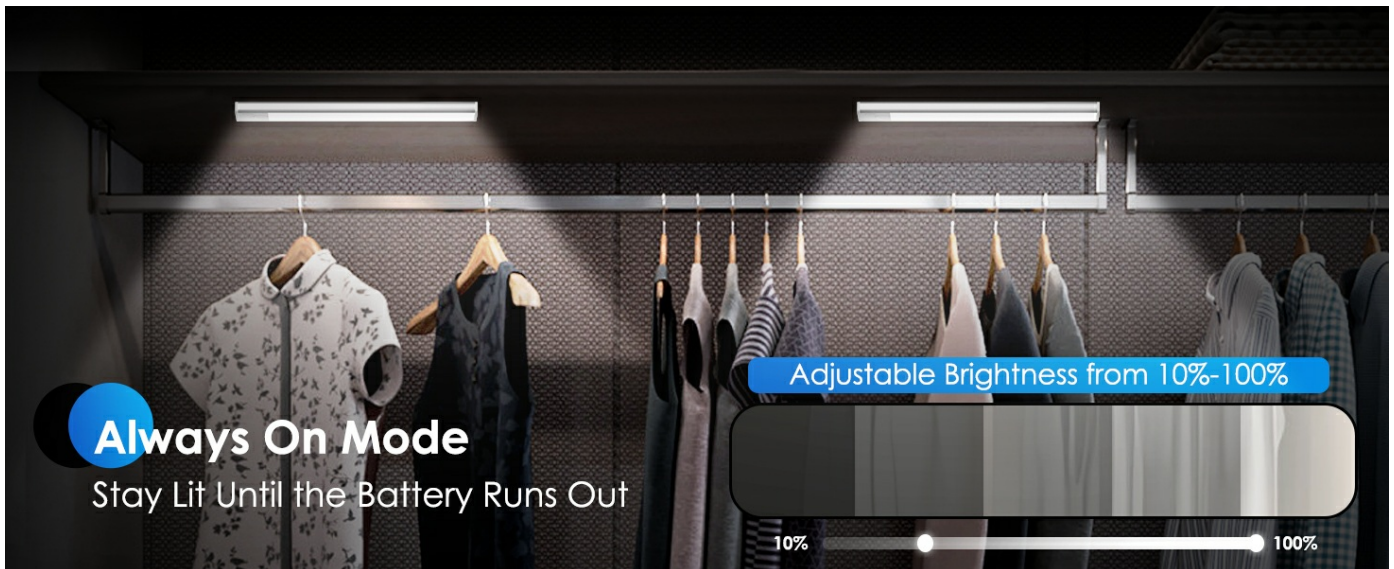


Image: Steps showing how to attach the light using adhesive metal plates under a cabinet.

Method 3: Screw Mounting

For a more permanent installation, use the provided screws and expansion anchors.

1. Mark two holes at the mounting spot, spacing them to match the width of the light bar's mounting points.
2. Drill holes at the marked spots. Insert the expansion anchors.
3. Secure the metal plates with screws into the anchors.
4. Mount the light onto the secured metal plates.



Image: Illustration of drilling holes and using screws to mount the light, suitable for walls or cabinets.

Installation Video Guide

Video: Official Brightever guide demonstrating the installation process and various features of the under cabinet lights.

5. Operating Instructions

The under cabinet lights feature a user-friendly button for control.

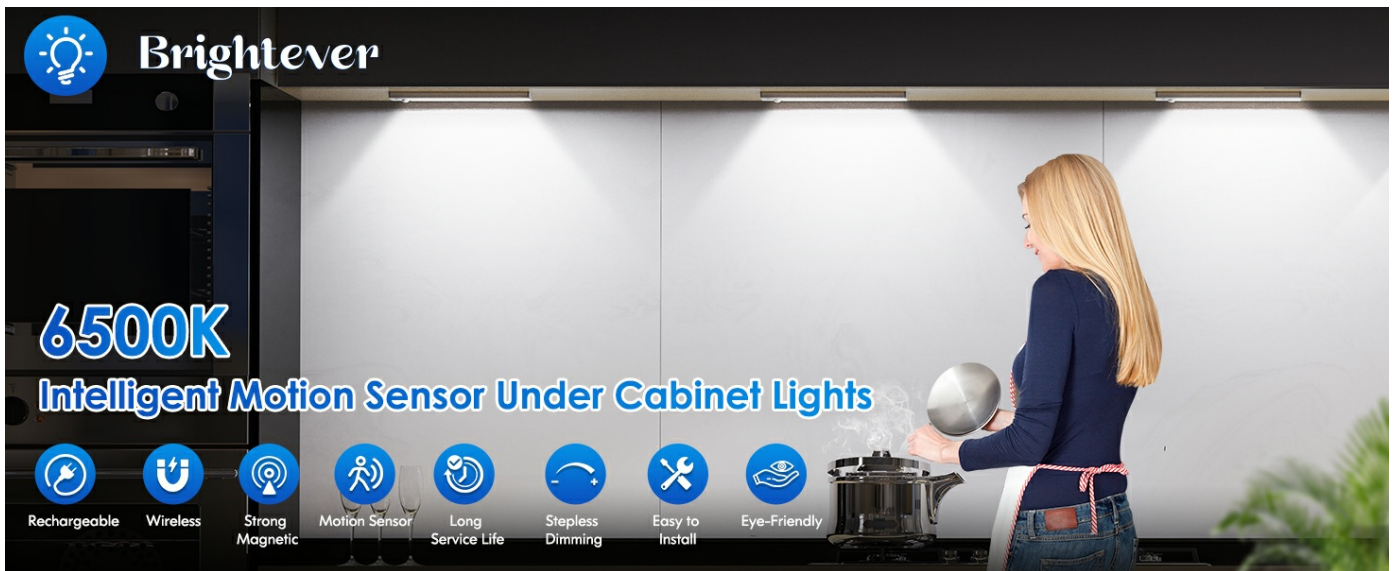


Image: Diagram showing the light panel, PIR sensor, switch, and USB-C port, with instructions for operation.

Power On/Off and Mode Selection

- **Press once:** To power on the light.
- **Press again:** To switch to Motion Sensor Mode.
- **Press a third time:** To shut down the light.

Stepless Dimming

While the light is on (in either mode), long press the button to steplessly adjust the brightness from 10% to 100%. The light features a memory function that retains the last set brightness level.

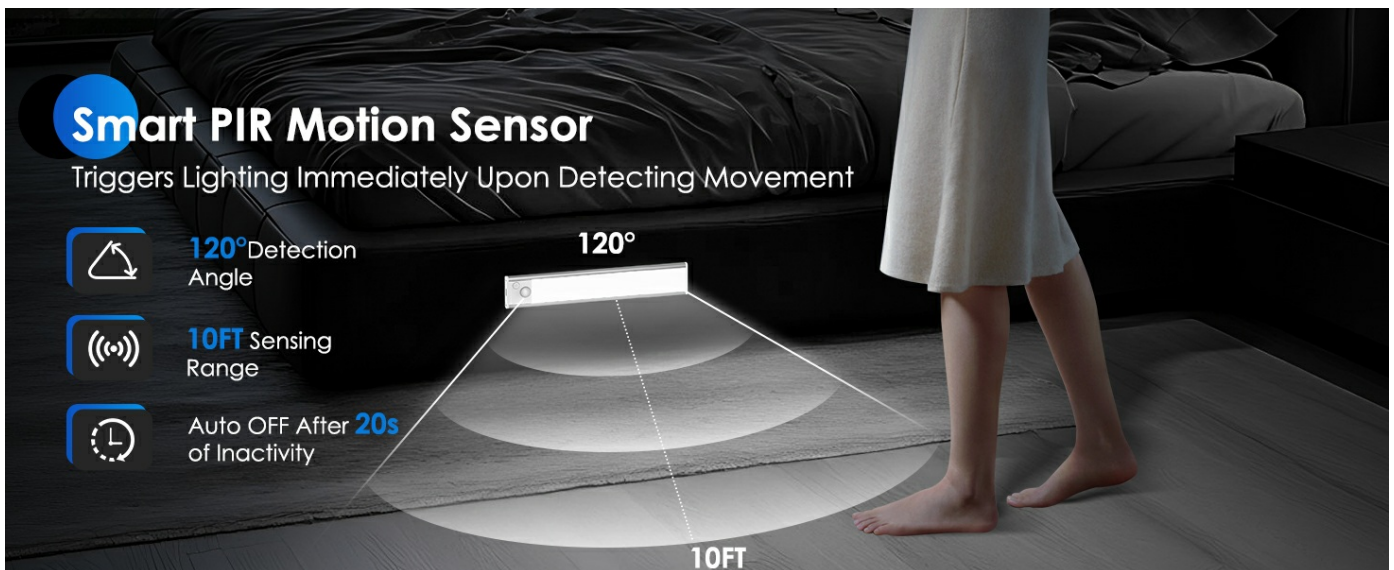


Image: Visual representation of the 'Always On Mode' and the adjustable brightness slider from 10% to 100%.

Motion Sensor Mode

In Motion Sensor Mode, the light automatically detects human activity within a 120° detection angle and a 10FT sensing range. It will turn off after 20 seconds of inactivity to conserve energy.

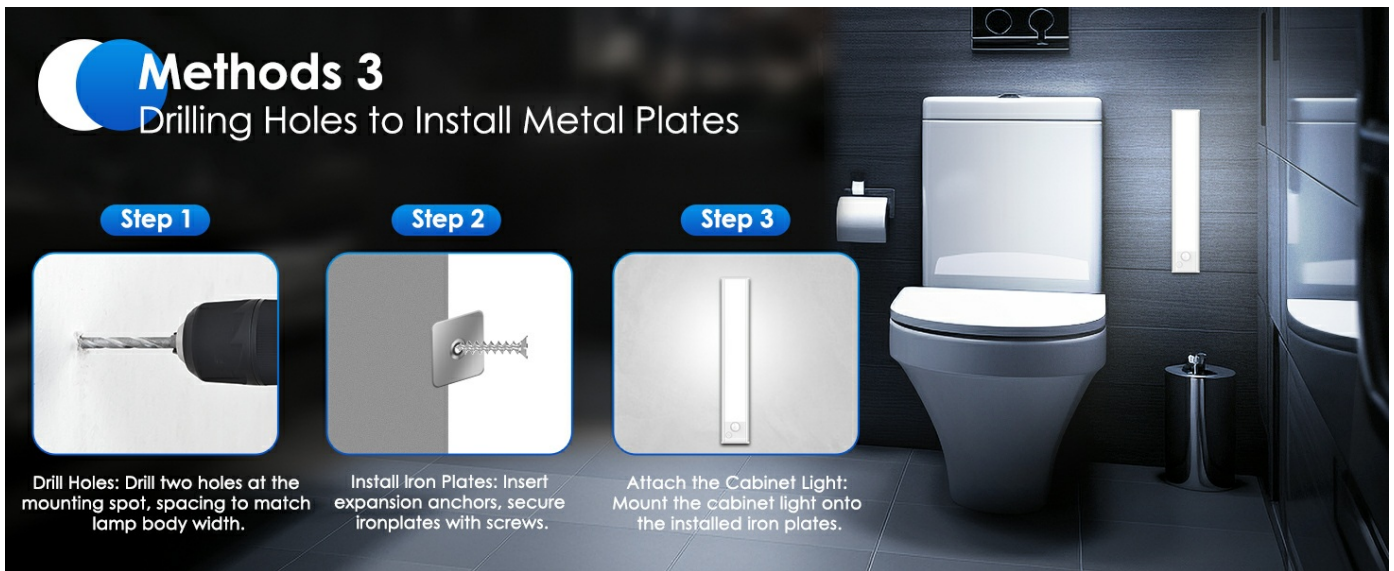


Image: Diagram illustrating the 120° detection angle and 10FT sensing range of the PIR motion sensor, with auto-off after 20 seconds.

Charging the Lights

The lights are equipped with a 1500mAh rechargeable battery. Use the provided USB charging cables for optimal performance.

- Connect the USB charging cable to the USB-C port on the light.
- A red indicator light will show that the device is charging.
- The indicator light will turn green when fully charged (approximately 3-4 hours).
- A full charge provides up to 10 hours of light in Always On Mode (at 100% brightness) or 35-60 days in Motion Sensor Mode (based on 10-20 detections per day).



Image: Close-up of the light bar showing the USB-C charging port and the 1500mAh battery capacity.

6. Maintenance

- **Cleaning:** Wipe the light surface with a soft, dry cloth. Do not use abrasive cleaners or solvents.
- **Battery Care:** To prolong battery life, avoid fully discharging the battery frequently. Recharge the lights when the brightness noticeably diminishes.
- **Storage:** If storing the lights for an extended period, charge them fully and store in a cool, dry place. Recharge every 3-6 months to maintain battery health.

7. Troubleshooting

- **Light does not turn on:**

- Ensure the battery is charged. Connect to a power source using the provided USB cable.
- Check if the light is in the correct operating mode (Always On or Motion Sensor). Press the button to cycle through modes.

- **Motion sensor is not detecting movement:**

- Ensure the sensor is not obstructed.
- Verify the light is in Motion Sensor Mode.
- Avoid positioning multiple sensors too closely, as this may interfere with operation.
- The detection range is 10FT and angle is 120°. Ensure movement occurs within this area.

- **Battery drains quickly:**

- Ensure the light is fully charged (indicator turns green).
- In Motion Sensor Mode, frequent activations will consume more battery.
- Ensure you are using the provided charging cables. Other cables may not be compatible and could affect charging efficiency or battery lifespan.

- **Light is too dim or too bright:**

- Long press the button to adjust the brightness using the stepless dimming feature.

8. Safety Information

- Do not disassemble or modify the product.
- Keep away from water and high humidity environments.
- Do not expose to direct sunlight or high temperatures.
- Keep out of reach of children.
- Dispose of batteries according to local regulations.

9. Warranty and Support

Brightever is committed to providing quality products and customer satisfaction. For any questions, concerns, or support needs regarding your under cabinet lights, please refer to the included Warranty/Explanation Sheet or contact Brightever customer service. We strive to offer friendly and helpful services.