



[Manuals.plus](#) /

› [AODK](#) /

› AODK 1005KUS 79-inch L-Shaped Desk Instruction Manual

AODK 1005KUS

AODK 1005KUS 79-inch L-Shaped Desk Instruction Manual

PRODUCT OVERVIEW

The AODK 79-inch L-Shaped Desk (Model 1005KUS) is designed for home office and gaming environments, offering a spacious work surface, integrated power outlets, LED lighting, and extensive storage solutions. This manual provides detailed instructions for assembly, operation, maintenance, and troubleshooting to ensure optimal use of your desk.



Image: The AODK 79-inch L-Shaped Desk in a modern office setup, featuring multiple monitors, a printer, and organized storage.

IMPORTANT SAFETY INFORMATION

- Always assemble the desk on a stable, level surface.
- Ensure all parts are securely fastened before use.
- Do not exceed the weight limit of the desk.
- Keep the desk away from heat sources and moisture to prevent damage.
- Always use the desk with caution to avoid injury.

PACKAGE CONTENTS

The AODK 1005KUS L-Shaped Desk package includes all necessary components for assembly. Please verify all parts are present before beginning assembly. If any parts are missing or damaged, contact customer support.

- Desktop Panels (L-shaped sections, monitor stand)
- Steel Frame Components (legs, support bars, X-brackets)
- 3-Drawer Set (for under desktop)
- 4-Tier Fabric Drawers (with frame)
- Power Outlet Unit (with AC outlets and USB ports)
- LED Lighting Strip with Controller

- CPU Stand
- Assembly Hardware (screws, bolts, nuts, adjustable foot pads)
- Assembly Tools (e.g., Allen wrench)

SETUP AND ASSEMBLY INSTRUCTIONS

Pre-Assembly Checklist

- Clear a spacious area for assembly.
- Unpack all components and lay them out, comparing them against the parts list in your included manual.
- Ensure you have the necessary tools (usually an Allen wrench is provided, but a screwdriver may also be helpful).

Assembly Steps

Follow the step-by-step diagrams provided in your physical instruction manual. General steps include:

1. Assemble the main steel frame components, ensuring all connections are finger-tight initially.
2. Attach the desktop panels to the frame. Note the reversible design allows you to configure the L-shape to either the left or right side.
3. Install the three file drawers beneath the main desktop.
4. Assemble the frame for the four-tier fabric drawers and insert the fabric drawers.
5. Secure the long monitor stand to the desktop.
6. Install the built-in power outlet units into the designated slots.
7. Attach the LED lighting strip to the underside of the monitor stand or desired location.
8. Place the CPU stand in its designated area.
9. Once all components are in place, fully tighten all screws and bolts.
10. Adjust the leveling feet to ensure the desk is stable and level on your floor.

Large Shelf Storage Space

To help you with your storage problems



4-Tier Fabric Drawers



File Drawers Design

Image: Detailed diagram showing the overall dimensions and key measurements of the AODK L-Shaped Desk.



RGB LED Lights

10 Lighting Modes

10 Color Variations

RGB

Image: Visual guide demonstrating the reversible configuration options for the L-shaped desk.

Long Monitor Stand

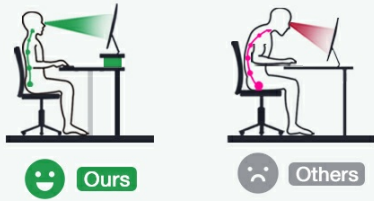


Image: Details of the desk's construction, including the durable desktop, X-shaped frame supports, and adjustable leveling feet.

OPERATING INSTRUCTIONS

Power Outlets

The desk features two built-in power outlets, each providing 3 AC outlets (125V/12A) and 2 USB ports (5V/2A). To use, connect the desk's main power cord to a standard wall outlet. You can then plug in and charge your electronic devices directly from the desk.

Excellent Durability & Light Diffusion 😊

Soft Light Strip Short life span and vulnerable 😞

Ours **Others**

- Light Diffusive Lampshade
- Longevity LED Beads
- Enhanced Copper Circuit Board
- Rigid LED Strip Base

Image: Close-up view of the integrated power strip with AC and USB ports.

LED Lighting System

The integrated LED lighting strip offers 10 color variations and 10 lighting modes. To operate, ensure the LED strip is connected to a USB power source (e.g., one of the desk's USB ports or a separate adapter). Use the inline controller to:

- **Power On/Off:** Press the power button.
- **Change Colors:** Press the color cycle button to switch between 10 static colors.
- **Select Modes:** Press the mode button to cycle through 10 dynamic lighting effects.
- **Adjust Brightness:** Use the brightness up/down buttons to set your preferred intensity.



Image: The LED light strip and its remote control, illustrating color and mode selection.

MAINTENANCE

Cleaning

- **Desk Surfaces:** Wipe surfaces with a soft, slightly damp cloth. Avoid abrasive cleaners or harsh chemicals that could damage the finish.
- **Fabric Drawers:** Spot clean fabric drawers with a mild detergent and a damp cloth. Allow to air dry completely. Do not machine wash.

General Care

- Regularly check all screws and connections for tightness to maintain stability.
- Avoid placing hot items directly on the desk surface without a protective coaster.
- Do not overload shelves or drawers beyond their recommended weight capacity.
- Keep liquids away from power outlets and electrical components.

TROUBLESHOOTING

Power Outlets Not Working

- **Check Main Connection:** Ensure the desk's main power cord is securely plugged into a functional wall outlet.
- **Circuit Breaker:** Verify that the wall outlet's circuit breaker has not tripped.
- **Device Connection:** Ensure your devices are properly connected to the desk's outlets.

LED Lights Not Functioning

- **Power Source:** Confirm the LED strip is correctly connected to a working USB power source.
- **Controller Check:** Ensure the inline controller is properly connected and not damaged. Try pressing the power button on the controller.
- **Cycle Modes:** Sometimes cycling through modes or colors can reset the strip.

Desk Instability

- **Tighten Screws:** Verify all assembly screws and bolts are fully tightened.
- **Adjust Leveling Feet:** Use the adjustable leveling feet at the bottom of the desk legs to compensate for uneven floors. Rotate them clockwise to raise and counter-clockwise to lower.

PRODUCT SPECIFICATIONS

Feature	Detail
Brand	AODK
Model Number	1005KUS
Shape	L-Shape
Product Dimensions (D x W x H)	18.9" x 78.5" x 30.7"
Color	Oak Grey
Material Type	Engineered Wood, Alloy Steel
Number of Drawers	7 (3 file drawers, 4 fabric drawers)
Number of Shelves	4 (open shelves)
Special Feature	Reversible Design, Built-in Power Outlets, LED Light, Monitor Stand, CPU Stand
Power Outlets	2 units, each with 3 AC (125V/12A) and 2 USB (5V/2A) ports
LED Light	10 colors, 10 lighting modes
Item Weight	80 Pounds
Required Assembly	Yes
Warranty Type	Limited

WARRANTY INFORMATION

The AODK 1005KUS L-Shaped Desk comes with a Limited Warranty. Please refer to the warranty card included in your product packaging for specific terms, conditions, and duration of coverage. It is recommended to retain your purchase receipt as proof of purchase for any warranty claims.

CUSTOMER SUPPORT

For further assistance, missing parts, or warranty inquiries, please contact AODK customer support. You can typically find contact information (phone number, email, or website) in your product packaging or by visiting the official AODK website. Please have your model number (1005KUS) and purchase details ready when contacting support.

For more information, visit the [AODK Store on Amazon](#).