

Manuals+

[Q & A](#) | [Deep Search](#) | [Upload](#)

[manuals.plus](#) /

› [ATUVOS](#) /

› [ATUVOS Wallet Tracker Finder Card User Manual](#)

ATUVOS AT2204-1P

ATUVOS Wallet Tracker Finder Card User Manual

Model: AT2204-1P

Brand: ATUVOS

PRODUCT OVERVIEW

The ATUVOS Wallet Tracker Finder Card is an ultra-thin smart Bluetooth tracker designed to help you locate your valuable items. It works exclusively with Apple's Find My network, allowing you to find items both nearby and far away. Its durable, water-resistant design and long-lasting battery make it an ideal solution for tracking wallets, luggage, passports, and more.



Image: The ATUVOS Wallet Tracker Finder Card, a sleek, dark grey card with the ATUVOS logo and a circular button.

SETUP AND PAIRING

To begin using your ATUVOS Wallet Tracker, you must pair it with your Apple iOS device using the Apple Find My app. This device does not support Android.

1. **Enable Find My and Bluetooth:** On your iOS device, ensure both the Find My app and Bluetooth are turned on.
2. **Add New Item:** Open the Find My app. Navigate to the "Items" tab and tap "Add Item" located at the bottom. Then, select "Other Supported Item."
3. **Pair the Tracker:** Press and hold the button on your ATUVOS Tag for 10 seconds to reset it. Once reset, the tag will be discoverable. Follow the on-screen prompts in the Find My app to connect and pair your ATUVOS Tag.
4. **Subsequent Pairing:** For pairing additional ATUVOS Tags or re-pairing, tap the "+" icon and then "Add Other Item" within the Find My app.



Image: A step-by-step visual guide showing how to pair the ATUVOS tracker with an iPhone using the Find My app, from enabling Bluetooth to adding an item.

OPERATING INSTRUCTIONS

The ATUVOS Wallet Tracker leverages the Apple Find My network for efficient item location.

Finding Items Nearby

When your item is within Bluetooth range (up to 200 feet), you can use the Find My app to make your ATUVOS Tag ring. The built-in speaker emits a loud sound (80-100dB) to help you pinpoint its exact location. You can also ask Siri for assistance.

Lost your item nearby?

Find it with a tap of a button on your cellphone



Image: A hand holding an iPhone displaying the Find My app, with a wallet tracker on the floor nearby emitting sound waves, illustrating the "Find Nearby" function.

Your browser does not support the video tag.

Video: This video demonstrates how the ATUVOS Ultra-thin Tracker Card works with Apple Find My, showing the process of finding a lost item nearby by playing a sound.

Finding Items Far Away

If your item is outside of Bluetooth range, the vast Apple Find My network can help. Hundreds of millions of Apple iOS devices worldwide anonymously relay the location of your ATUVOS Tag. You can view its location on a map within the Find My app and even get navigation directions to guide you to its vicinity. There are no monthly or annual fees for this service.

Find Far Away

When outside of Bluetooth range, use the Find My app to view it on the map and direct you to the vicinity of ATUVOS



Image: A person walking outdoors while looking at an iPhone displaying a map with directions to a lost item, illustrating the "Find Far Away" feature.

Left Behind Reminders

The Find My app can send you an instant notification if your ATUVOS Tag is left behind and disconnects from your iOS device's Bluetooth. This feature helps prevent accidental loss.

Left-Behind **Remind**



"wallet" left behind

20m ago

This item is no longer detected near you.
It was last seen near Airport *****

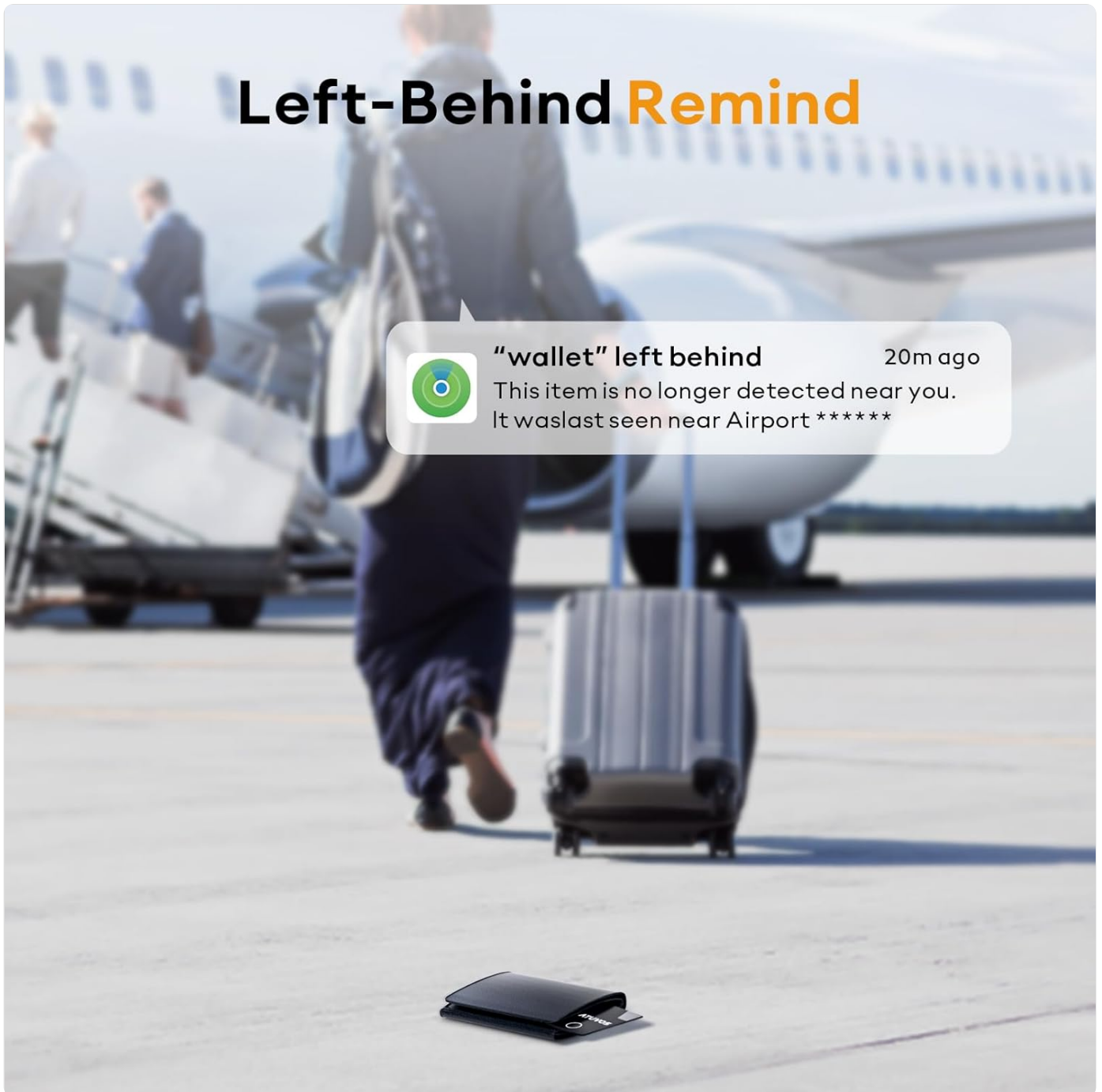


Image: An iPhone screen showing a "Wallet left behind" notification, with a wallet tracker on the ground near an airport, demonstrating the left-behind reminder feature.

Privacy Protection

For your privacy, the Apple Find My network is designed to be encrypted and anonymous. Location data and history are not stored on the ATUVOS Wallet Tracker Card itself, ensuring your information remains secure.

Use "Find My" to Pair, not Bluetooth.

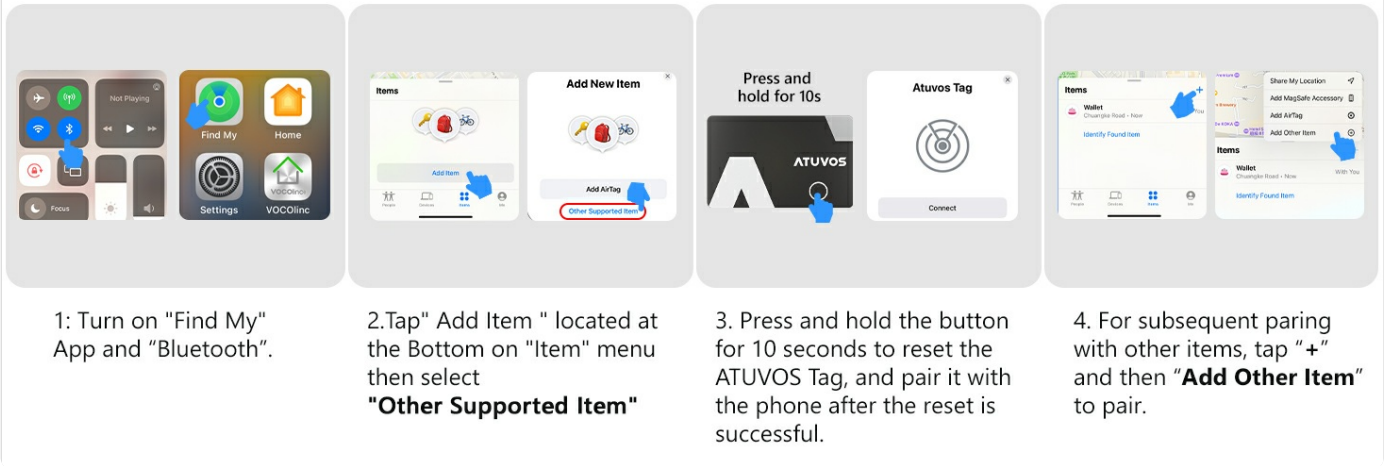


Image: An abstract illustration depicting secure data flow and encryption, symbolizing the privacy protection features of the Find My network for the ATUVOS tracker.

MAINTENANCE

The ATUVOS Wallet Tracker is designed for durability and long-term use.

- **Battery Life:** The tracker features a built-in, non-replaceable battery with a life of up to 3 years.
- **Water Resistance:** The device has an IP67 waterproof rating, meaning it is protected from dust and can withstand immersion in water up to 1 meter for up to 30 minutes.

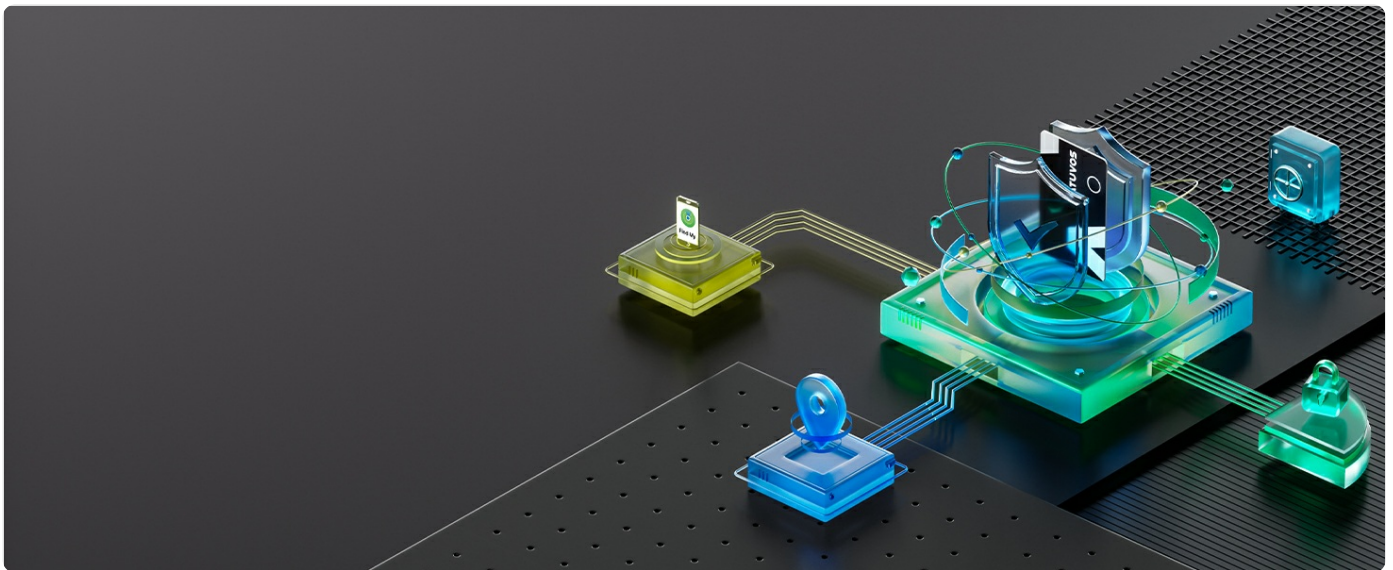


Image: The ATUVOS tracker card being splashed with water, demonstrating its IP67 water-resistant capability.

TROUBLESHOOTING

If you encounter issues with your ATUVOS Wallet Tracker, consider the following:

- **Not Connecting/Pairing:**
 - Ensure your iOS device's Bluetooth is enabled.
 - Confirm the Find My app is installed and updated.
 - Remember that the ATUVOS Tracker is *only compatible with Apple iOS devices* It will not work with Android phones.

- Try resetting the tracker by pressing and holding its button for 10 seconds, then attempt pairing again.

- **No Sound When Ringing:**

- Check if the tracker is within Bluetooth range of your iOS device.
- Ensure your phone's volume is up and not muted.
- Obstructions or being inside certain materials (like a metal wallet) might slightly dampen the sound.

- **Inaccurate Location:**

- Location accuracy depends on the density of the Apple Find My network in the area. In remote areas, updates might be less frequent.
- Ensure your iOS device has a stable internet connection (Wi-Fi or cellular data) for accurate map updates.

- **Battery Life Shorter Than Expected:**

- While rated for up to 3 years, actual battery life can vary based on usage patterns and environmental factors. The battery is non-replaceable.

SPECIFICATIONS

Feature	Detail
Model Number	AT2204-1P
Dimensions (L x W x Th)	3.37 x 2.13 x 0.06 inches (85.5mm x 54mm x 1.6mm)
Item Weight	1.13 ounces
Material	Plastic
Battery Type	1 Lithium Metal battery (included, non-replaceable)
Estimated Battery Life	Up to 3 years
Water Resistance Rating	IP67
Bluetooth Range	Up to 200 feet (60 meters)
Sound Level	80-100 dB
Compatibility	Apple iOS devices only (Works with Apple Find My)
Country of Origin	China

Specifications and Features

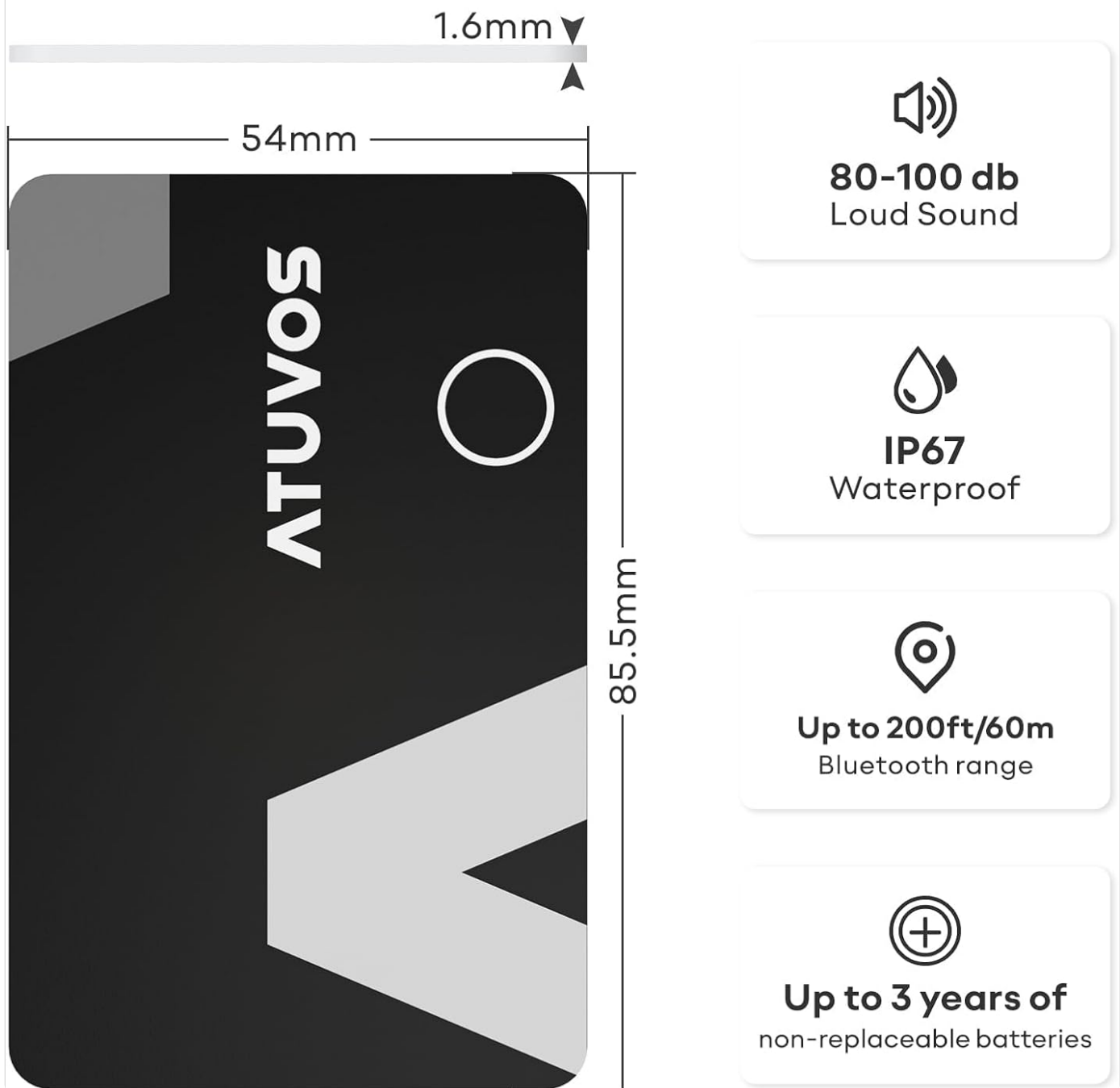


Image: A graphic displaying key specifications of the ATUVOS tracker, including its 1.6mm thickness, 80-100dB loud sound, IP67 waterproof rating, 200ft Bluetooth range, and up to 3 years of battery life.

WARRANTY AND SUPPORT

Warranty Information

The ATUVOS Wallet Tracker Finder Card comes with a **1-Year Warranty** from the date of purchase. This warranty covers manufacturing defects and issues arising from normal use. Please retain your proof of purchase for warranty claims.

Customer Service

For any questions regarding the use, setup, or troubleshooting of your ATUVOS Item Locator, our customer service team is available to assist you. We offer 24-hour customer service to ensure your satisfaction.

Please refer to the contact information provided with your product packaging or visit the official ATUVOS website for

support details.