

Manuals+

[Q & A](#) | [Deep Search](#) | [Upload](#)

Manuals.plus /

› [EpheyFIF](#) /

› Honiture Q5 Robot Vacuum Cleaner Water Tank - Instruction Manual

EpheyFIF Honiture Q5

Honiture Q5 Robot Vacuum Cleaner Water Tank - Instruction Manual

Model: Honiture Q5 (Replacement Part)

INTRODUCTION

This manual provides detailed instructions for the installation, operation, and maintenance of your replacement water tank for the Honiture Q5 Robot Vacuum Cleaner. This accessory is designed to enhance the mopping capabilities of your robot, ensuring efficient and thorough cleaning.

PRODUCT OVERVIEW

Key Features:

- **Large Capacity:** Designed to hold more water, allowing for cleaning larger areas without frequent refills.
- **Easy Refill:** Features a convenient refill opening for quick and spill-free water replenishment.
- **Leak-Proof Design:** Engineered to ensure water remains securely inside the tank during operation, preventing unwanted drips.
- **Transparent Design:** Allows for easy monitoring of the water level, indicating when a refill is needed for uninterrupted cleaning sessions.
- **Compatibility:** Specifically designed for the Honiture Q5 Robot Vacuum Cleaner.

Components:

The package typically includes the water tank unit. Depending on the purchased option, it may also include one or more mop cloths.



Figure 1: Top view of the water tank, showing the transparent body and the blue fill cap.



Figure 2: Underside of the water tank, illustrating how the mop cloths are attached.



Figure 3: Angled perspective of the water tank, showing the secure attachment points for the mop cloths.

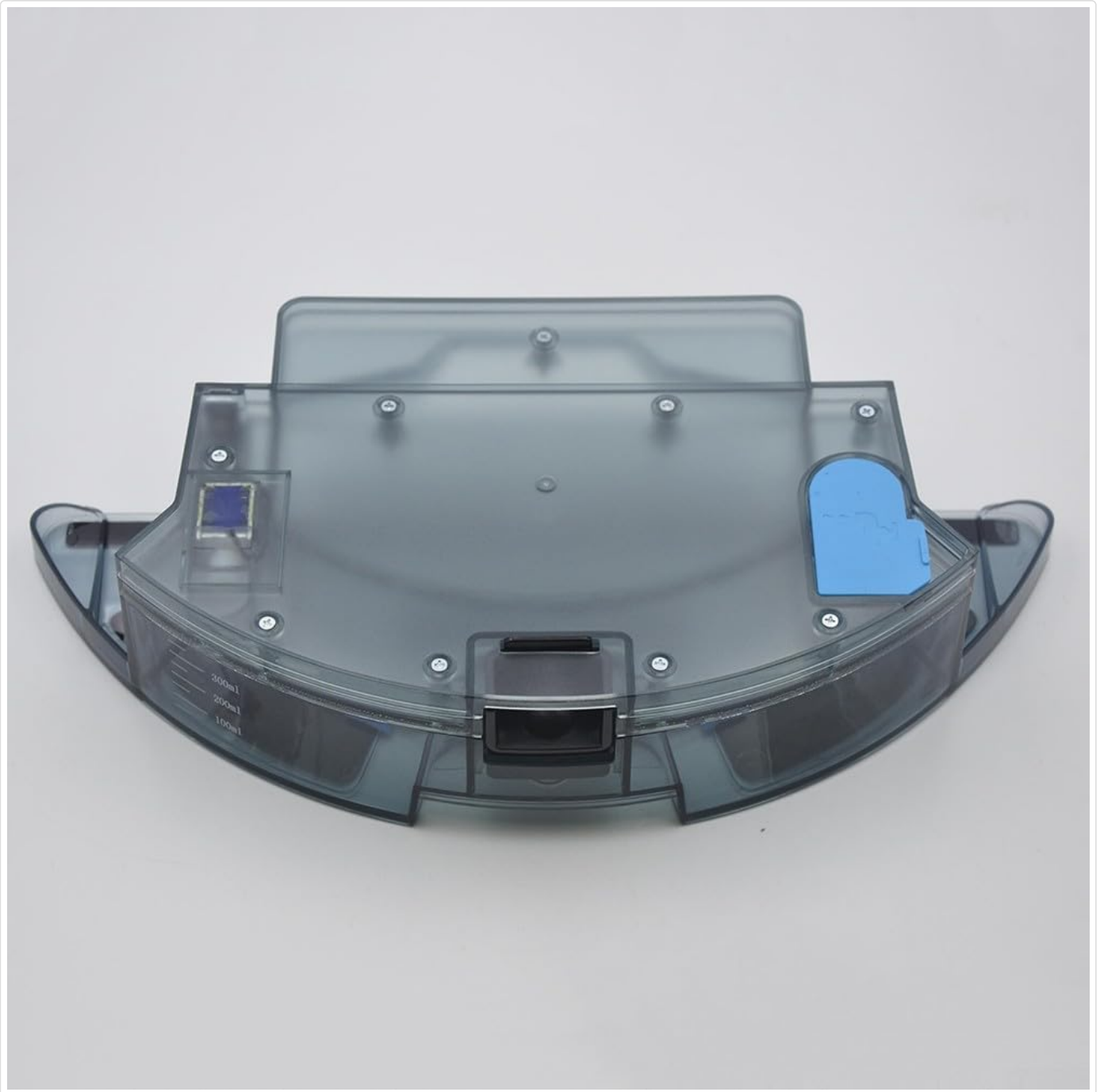


Figure 4: Clear view of the water tank's top surface, displaying water level markings for easy monitoring.



Figure 5: Front view of the water tank, highlighting the main opening for installation into the robot.

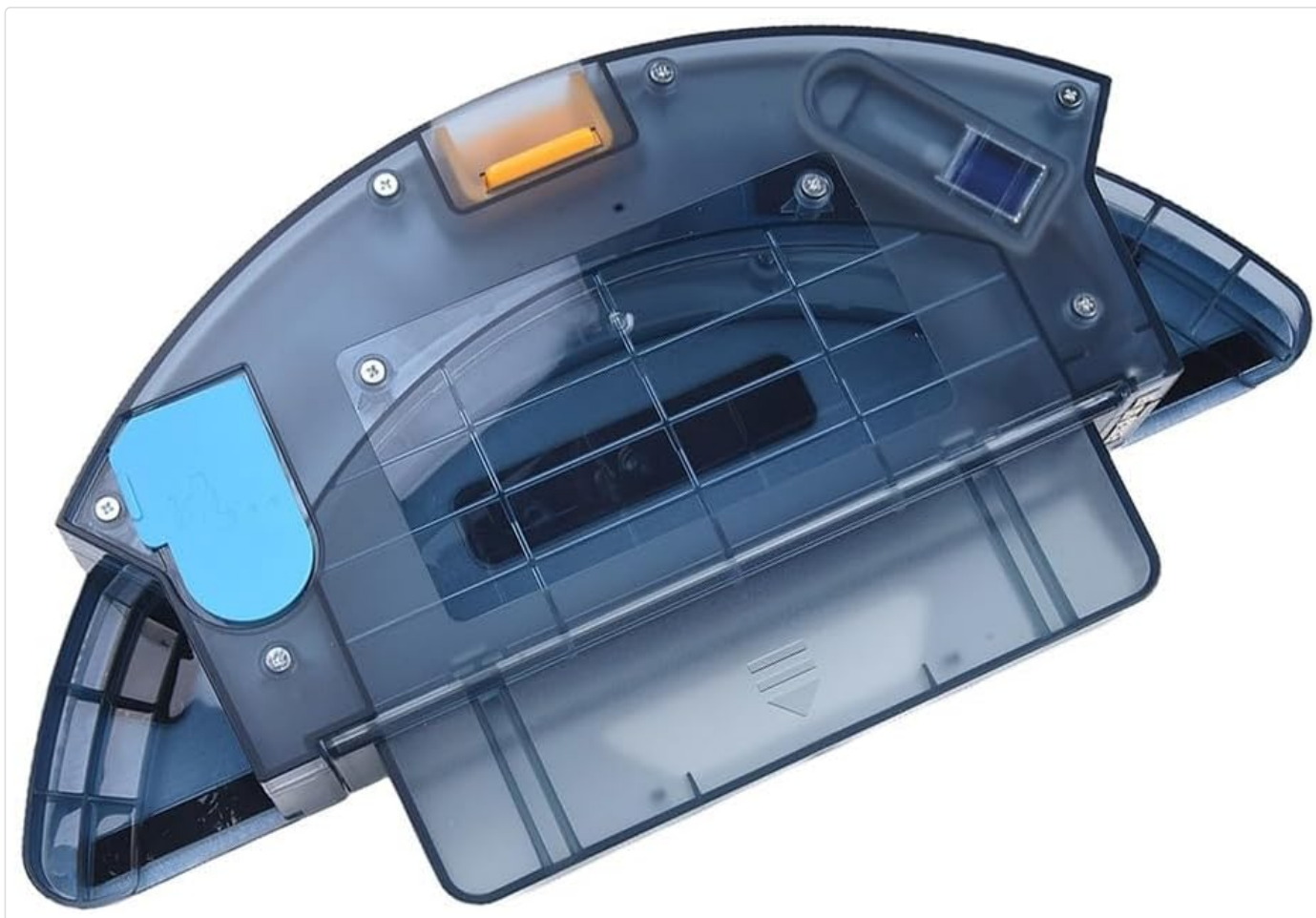


Figure 6: Angled view of the water tank, providing a comprehensive look at its various features, including the fill cap and sensor area.

SETUP

- 1. Prepare the Robot:** Ensure your Honiture Q5 robot vacuum cleaner is powered off and disconnected from its charging base.
- 2. Remove Existing Tank (if applicable):** If a water tank or dustbin is currently installed, gently press the release button (if present) and slide it out from the robot's designated slot.
- 3. Fill the Water Tank:**
 - Locate the blue fill cap on the water tank.
 - Open the cap and carefully fill the tank with clean tap water. Do not exceed the maximum fill line.
 - Securely close the fill cap to prevent leaks.
- 4. Attach Mop Cloths (if using):**
 - Align the mop cloth with the Velcro strips on the underside of the water tank.
 - Press firmly to ensure the mop cloth is securely attached.
- 5. Install the Water Tank:** Slide the filled water tank into the corresponding slot on your Honiture Q5 robot vacuum cleaner until it clicks into place. Ensure it is fully seated.

OPERATING INSTRUCTIONS

Once the water tank is installed and filled, your Honiture Q5 robot vacuum cleaner is ready for mopping operations. Refer to your robot's main instruction manual for specific mopping mode activation and scheduling.

- Ensure the robot is on a hard floor surface suitable for mopping.
- Activate the mopping function through the robot's app or physical controls.

- Monitor the water level through the transparent design and refill as needed.

MAINTENANCE

Cleaning the Water Tank:

1. Remove the water tank from the robot.
2. Empty any remaining water.
3. Rinse the inside of the tank with clean water. Do not use harsh detergents or abrasive materials.
4. Allow the tank to air dry completely before re-installing or storing.

Cleaning/Replacing Mop Cloths:

- Remove the used mop cloth from the water tank.
- Wash the mop cloth by hand or machine wash according to its care instructions.
- Replace worn or damaged mop cloths with new ones to maintain optimal cleaning performance.

TROUBLESHOOTING

Problem	Possible Cause	Solution
Water not dispensing / Mop cloth dry	Tank empty. Fill cap not securely closed. Water outlet clogged. Robot not in mopping mode.	Refill the water tank. Ensure the fill cap is tightly sealed. Check for debris in the water outlet and clean if necessary. Verify the robot is set to mopping mode via its app or controls.
Water leakage from tank	Fill cap not securely closed. Tank not properly installed. Tank damaged.	Ensure the fill cap is tightly sealed. Remove and re-install the tank, ensuring it clicks into place. Inspect the tank for cracks or damage. If damaged, replacement may be necessary.

SPECIFICATIONS

- **Product Name:** Water Tank for Honiture Q5 Robot Vacuum Cleaner
- **Brand:** EpheyFIF
- **Model Compatibility:** Honiture Q5 Robot Vacuum Cleaner
- **Material:** Plastic
- **Dimensions (L x W x H):** Approximately 15 x 10 x 5 cm (5.9 x 3.9 x 2 inches)
- **Item Weight:** Approximately 575 grams (1.27 lbs)
- **Color:** As pictured (translucent grey with blue accents)
- **Part Number:** T0M664295DWXQ9A65WFXAOF42T

WARRANTY AND SUPPORT

For warranty information regarding this replacement water tank, please refer to the original purchase documentation or contact the

seller, EpheyFIF, directly. For support related to the Honiture Q5 robot vacuum cleaner itself, please consult the robot's manufacturer's official support channels.

For further assistance, you may visit the product page on [Amazon.com.be](https://www.amazon.com.be) or contact the seller through the platform.

