

typecase AG-AC007-A-1S-V0

typecase Cat Tracker Collar with Finder Tag User Manual

Model: AG-AC007-A-1S-V0

1. INTRODUCTION

This manual provides essential instructions for the setup, operation, maintenance, and troubleshooting of your typecase Cat Tracker Collar with Finder Tag. This product is designed to help you locate your cat using Apple's Find My network. Please read this manual thoroughly to ensure proper use and to maximize the benefits of your new collar.

Important Note: This device is compatible with iOS devices ONLY and does not support Android devices.



Image: The typecase Cat Tracker Collar with its integrated finder tag, a separate finder tag, an iPhone displaying the Find My app, and a cat wearing the collar.

2. PACKAGE CONTENTS

Please verify that all components are present in your package:

- Cat Collar with integrated silicone holder
- Finder Tag (compatible with Apple Find My)
- Small Bell (removable)
- Decorative Pendant (removable)

3. SETUP GUIDE

3.1 Installing the Finder Tag

1. Gently open the silicone holder integrated into the collar.
2. Insert the Finder Tag into the holder, ensuring it sits securely. The holder is designed to protect the tag from water and dirt.

3. Close the silicone holder firmly to ensure the Finder Tag is fully enclosed and protected.

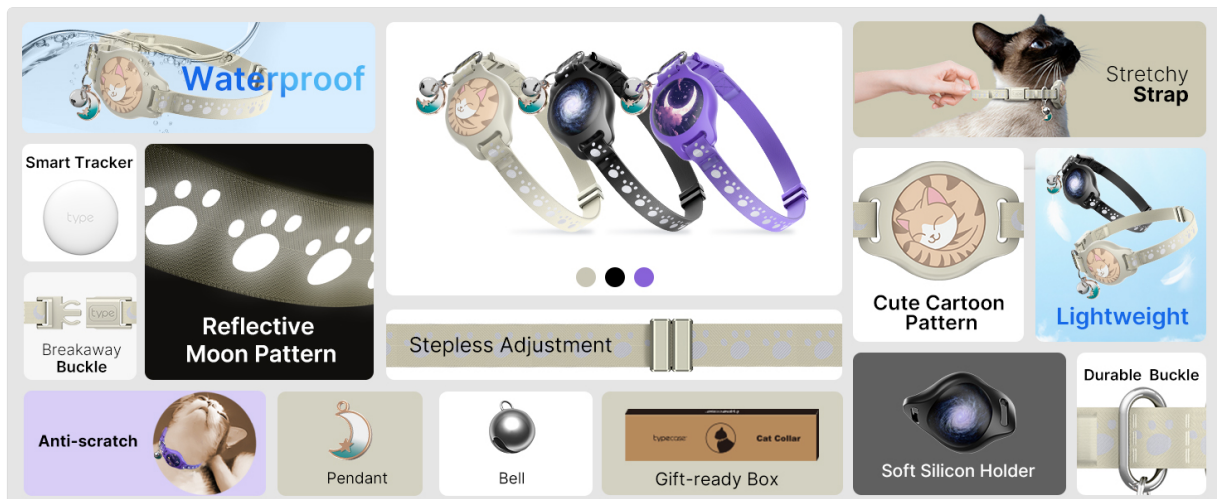


Image: Step-by-step visual guide for inserting the Finder Tag into the collar's silicone holder.

3.2 Pairing with Apple Find My

To activate the Finder Tag and bind it to your Apple device, follow these steps:

1. Press the power button on the Finder Tag once. You will hear a "beep" alarm, indicating it has entered pairing mode.
2. On your iOS device (iPhone, iPad, or Mac), ensure Bluetooth is enabled and open the Apple Find My app.
3. Navigate to the "Items" tab in the Find My app.
4. Tap "Add New Item" and then select "Other Supported Item".
5. Your device will search for nearby compatible items. Select "Wireless tag" when it appears.
6. Follow the on-screen prompts to connect and name your Finder Tag.



Image: Visual instructions for connecting the Finder Tag to the Apple Find My app.

3.3 Adjusting the Collar

Proper collar fit is crucial for your cat's comfort and safety. The collar is designed to fit kittens and adult cats of all breeds.

1. Measure your cat's neck circumference to determine the appropriate collar length. The collar is adjustable from 8 inches (20 cm) to 12 inches (30 cm) in length, with a width of 0.47 inches (1.2 cm).

2. Adjust the buckle to achieve a snug yet comfortable fit. You should be able to fit two fingers comfortably between the collar and your cat's neck.
3. Ensure the breakaway buckle is securely fastened. This safety feature is designed to release if the collar gets caught, preventing potential harm to your cat.

SIZE CHART



MIN Length: 8 IN(20 CM), Width: 0.47 IN(1.2 CM)



MAX Length: 12 IN(30 CM), Width: 0.47 IN(1.2 CM)

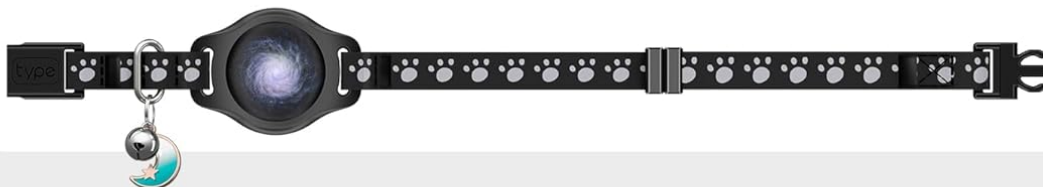


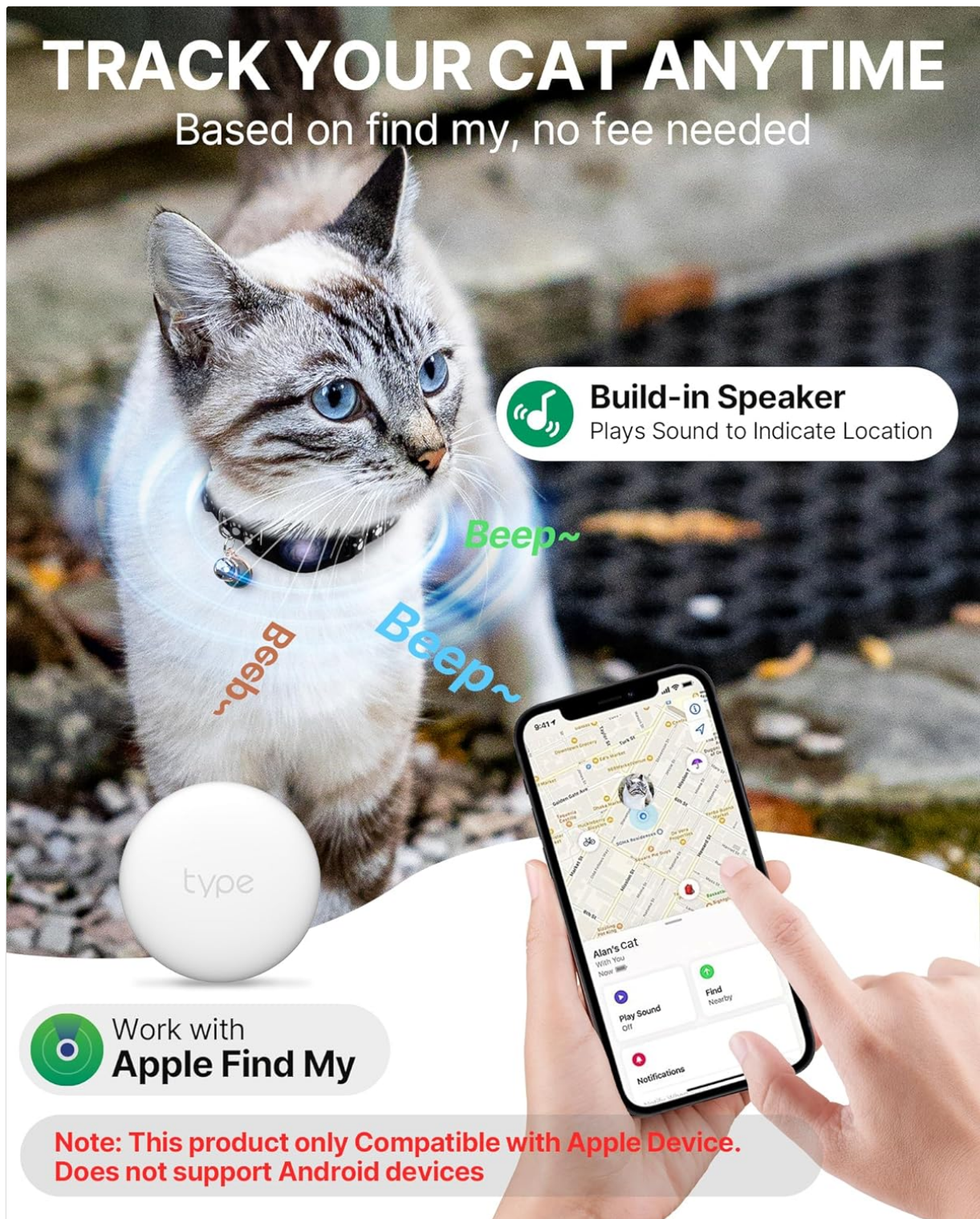
Image: Collar size chart illustrating minimum and maximum lengths and how it fits various cat breeds.

4. OPERATING INSTRUCTIONS

4.1 Tracking Your Pet

Once paired, you can track your cat's location using the Apple Find My app on your iOS device:

- Open the Find My app and select your Finder Tag from the "Items" tab.
- The app will display your cat's current location on a map.
- For precise location when within Bluetooth range, use the "Find Nearby" feature.



TRACK YOUR CAT ANYTIME

Based on find my, no fee needed

Build-in Speaker
Plays Sound to Indicate Location

Beep~
Beep~
Beep~

type

Work with
Apple Find My

**Note: This product only Compatible with Apple Device.
Does not support Android devices**

Image: A cat wearing the tracker collar, with an iPhone screen showing its location on the Find My app.

4.2 Using the Sound Feature

If your cat is nearby but out of sight, you can activate a sound from the Finder Tag:

- In the Find My app, select your Finder Tag.
- Tap the "Play Sound" option. The Finder Tag will emit a clear, loud beep to help you pinpoint your cat's exact location.



Image: A cat with sound waves indicating the Finder Tag's audible alert, alongside an iPhone displaying the Find My app's sound feature.

4.3 Global Tracking

When your cat is outside of your device's Bluetooth range, the Finder Tag utilizes the Apple Find My network. This network anonymously and securely uses nearby Apple devices to relay the location of your Finder Tag, providing global tracking capabilities without any monthly fees.

5. PRODUCT FEATURES

- **Integrated Tracker Holder:** The collar features a secure silicone holder for the Finder Tag, protecting it from environmental elements.
- **Waterproof Protection:** The Finder Tag, when properly secured in its silicone holder, is IP67 waterproof, safeguarding it from water and dirt.

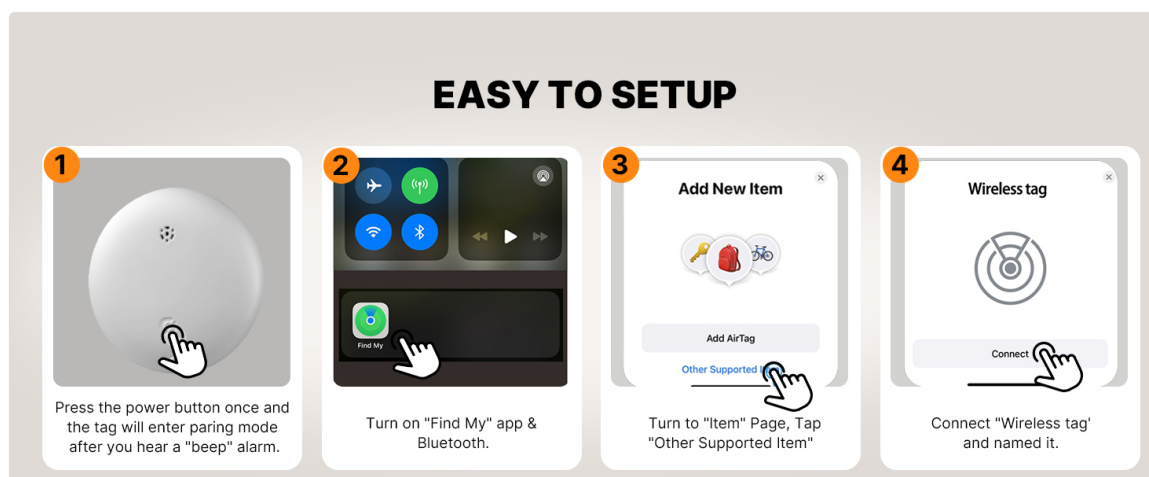


Image: The Finder Tag demonstrating its waterproof capability and highlighting its 365-day battery life.

- **No Monthly Fee:** The tracking functionality relies on the Apple Find My network, requiring no subscription or monthly fees.
- **Long Battery Life:** The Finder Tag is designed for extended use, offering up to 365 days of battery life. The battery is replaceable.
- **Reflective Design:** The collar incorporates paw-shaped reflective patterns to enhance your cat's visibility in low-light conditions, contributing to safety during nighttime.

REFLECTIVE DESIGN

Keeping your furry friend safe at night



Image: A cat wearing the collar, showcasing its reflective paw print design in a dark environment.

- **Breakaway Safety Buckle:** The collar features a breakaway buckle designed to release under pressure, preventing entanglement and potential injury to your cat.



Image: A cat in a snowy environment, highlighting the breakaway safety buckle feature of the collar.

- **Comfort-Oriented Design:** Made with a stretchy elastic weave and a 1 cm width, the collar distributes pressure evenly for comfortable wear. The soft, skin-friendly material minimizes irritation.

ULTRA COMFORT

Barely Noticeable, Just Pure Joy



Lightweight



Ultra Soft



Integrated

Image: A kitten comfortably sleeping while wearing the collar, emphasizing its lightweight and soft design.

- **Cartoon Pattern:** The collar features a cartoon pattern.

6. MAINTENANCE

6.1 Cleaning the Collar

The collar can be spot cleaned as needed. Use a mild soap and water solution with a soft cloth. Avoid harsh chemicals or abrasive materials that could damage the collar's fabric or reflective elements.

6.2 Battery Replacement

The Finder Tag uses a replaceable battery. When the battery level is low, you will receive a notification on your iOS device via the Find My app. To replace the battery:

1. Carefully open the Finder Tag casing using a small tool or coin.
2. Remove the old battery.
3. Insert a new CR2032 button cell battery with the positive (+) side facing up.
4. Close the casing securely, ensuring the waterproof seal is intact.

7. TROUBLESHOOTING

If you encounter issues with your typecase Cat Tracker Collar, refer to the following common solutions:

- **Finder Tag Not Connecting or Disconnecting:**

- Ensure your iOS device's Bluetooth is enabled and the Find My app is open.
- Check the Finder Tag's battery level in the Find My app. Replace the battery if it is low.
- Try resetting the Finder Tag by pressing its power button for 3 seconds.
- If the issue persists, remove the item from the Find My app and re-pair it following the setup instructions.
- Note that in remote areas with fewer Apple devices, the Find My network's ability to locate the tag may be limited.

- **Inaccurate Location Tracking:**

- Location accuracy can vary based on environmental factors and the proximity of other Apple devices.
- For precise close-range tracking, utilize the "Play Sound" feature to audibly locate your cat.

- **Collar Loosening or Cat Removing Collar:**

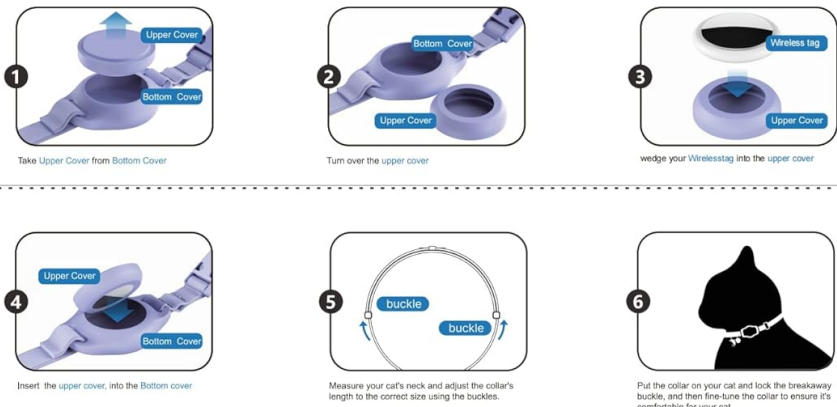
- Ensure the collar is adjusted correctly, allowing two fingers to fit comfortably between the collar and your cat's neck.
- Regularly check the collar's tightness to prevent it from becoming too loose.
- The breakaway buckle is designed for safety and will release under sufficient force.

- **Finder Tag Removed from Casing by Cat:**

- Ensure the silicone holder is closed firmly around the Finder Tag.
- Monitor your cat's interaction with the collar, especially if they show signs of discomfort or attempt to remove the tag.

Installation Guide

Before installing the protective cover of the cat collar, please follow the following steps to activate the Wireless tag and Bind your Apple mobile device.



Manual

The Apple® Find My® network provides an easy, secure way to locate compatible personal items using the Find My app on your iPhone®, iPad®, Mac®, or the Find Items app on Apple Watch®.

To use the Apple Find My app to locate this item, the latest version of iOS®, iPadOS®, or macOS® is recommended. The Find Items app on Apple Watch requires the latest version of watchOS®.

Use of the Works with Apple badge means that a product has been designed to work specifically with the technology identified in the badge and has been certified by the product manufacturer to meet Apple Find My network product specifications and requirements. Apple is not responsible for the operation of this device or use of this product or its compliance with safety and regulatory standards.

1. Getting Started

To prevent accidental shutdowns that could result in the device being unable to locate, we have re-upgraded the startup and shutdown methods.



1.1. Power On/Off

1.1.1 Power On: Hold the circular dot on the device's power button for 3 seconds, and when you hear a ring-ring chime, it indicates that the device has been powered on. (Refer to the diagram)

1.1.2 Power Off: Press the device button twice, and you will hear a confirmation sound. Then press and hold the power button for 3 seconds (if you press it for less than 3 seconds or more than 3 seconds, the device will not power off), then release it... you will hear two beeps indicating it is powered off. Remark: setting a shutdown timer are designed to prevent accidental shutdowns, ensuring the device can continue to locate effectively.

1.2. Check For Updates

To use the Apple® Find My® app to locate Item Locator, the latest version of iOS®, iPadOS®, or macOS® is recommended. The Find My app on Apple Watch requires the latest version of watchOS®.

Image: Excerpt from the detailed user manual, providing additional setup and troubleshooting information.

8. SPECIFICATIONS

Feature	Detail
Brand	typecase
Model Name	AG-AC007-A-1S-V0
Item Weight	2.39 ounces
Collar Material	Nylon, Silicone
Finder Tag Material	Metal
Collar Length	8-12 inches (20-30 cm)
Collar Width	0.47 inches (1.2 cm)
Waterproof Rating	IP67 (Finder Tag in holder)
Battery Type	CR2032 button cell
Battery Life	Up to 365 days
Compatibility	iOS devices ONLY (iPhone, iPad, Mac)
Closure Type	Break Away, Buckle
Care Instructions	Spot Clean

9. WARRANTY AND SUPPORT

9.1 Warranty Information

This product comes with a 1-year warranty from the date of purchase. Please retain your proof of purchase for warranty claims.

9.2 Customer Support

If you require further assistance or have questions not covered in this manual, please contact our after-sales support team. Contact information can typically be found on the product packaging or the retailer's website.