



Manuals.plus /

› Shkalacar /

› Shkalacar 12V Universal Car Keyless Entry System Instruction Manual

Shkalacar UDN7875374890772IQ

Shkalacar 12V Universal Car Keyless Entry System

INSTRUCTION MANUAL

Introduction

This manual provides detailed instructions for the installation, operation, and maintenance of your Shkalacar 12V Universal Car Keyless Entry System. This system is designed to provide convenient remote locking and unlocking functionality for your vehicle, along with a car finding feature. Please read this manual thoroughly before installation and use to ensure proper function and safety.

Product Overview and Package Contents

The Shkalacar 12V Universal Car Keyless Entry System includes the main control unit, two remote controllers, and the necessary wiring harness for installation.



Image: All components of the Shkalacar Keyless Entry System, including the control box, two remote key fobs, and the wiring harness.

Package Contents:

- 1 x Control Box
- 2 x Remote Controllers
- 1 x Wiring Harness
- 1 x English User Manual (this document)

Specifications

Component	Specification
Main Unit Voltage	12V ± 2V (DC)
Main Unit Static Current	≤12mA
Main Unit Frequency	433.92MHz
Remote Control Voltage	12V
Remote Control Current	<5mA
Remote Control Frequency	433.92MHz
Material	Plastic
Control Box Size	Approx. 6 x 4 x 2.5 cm
Remote Controller Size	Approx. 6 x 3 x 1 cm

Setup and Installation

Installation of the Shkalacar Keyless Entry System requires electrical wiring knowledge and should ideally be performed by a qualified professional. Incorrect installation can damage the vehicle's electrical system or the keyless entry unit.

Components for Installation:

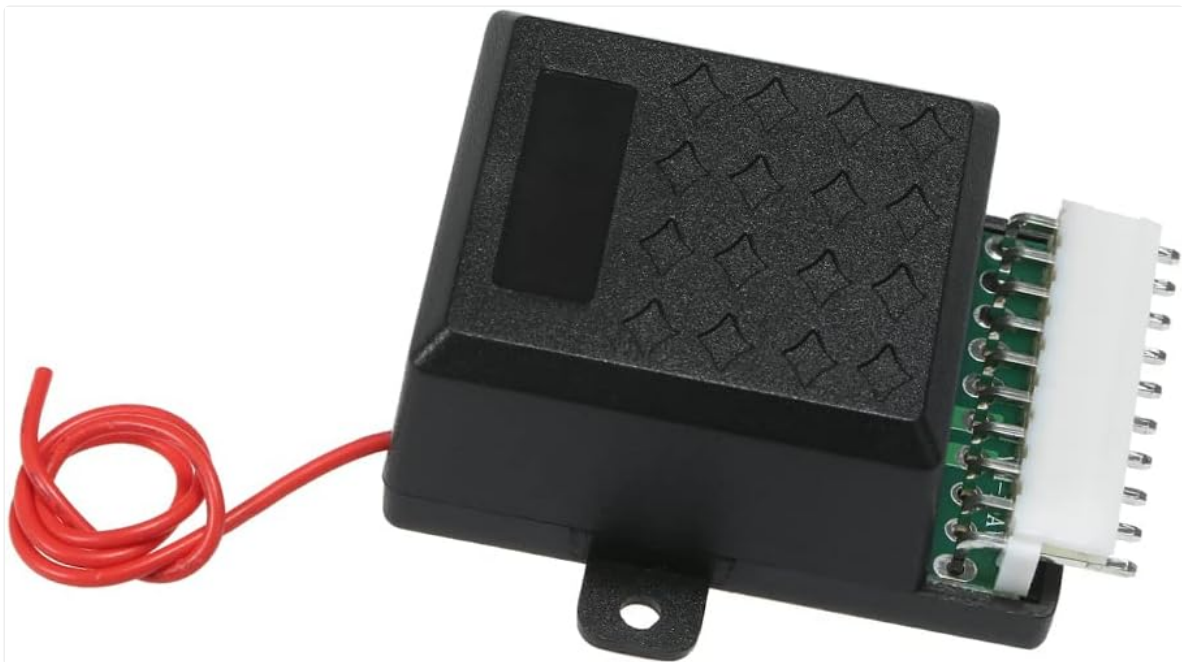


Image: The main control box of the keyless entry system.

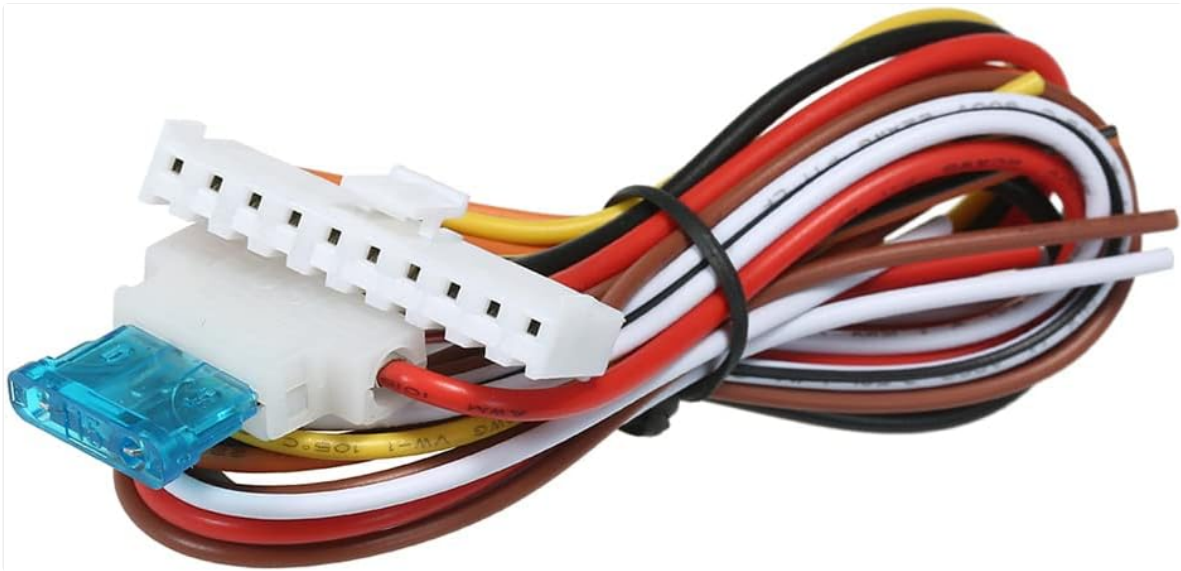


Image: The wiring harness with connectors and fuse for the keyless entry system.

General Installation Steps (Consult a professional):

1. **Disconnect Vehicle Battery:** Before beginning any electrical work, disconnect the negative terminal of your vehicle's battery to prevent short circuits.
2. **Mount the Control Box:** Select a secure, dry location inside the vehicle (e.g., under the dashboard) to mount the control box. Ensure it is away from heat sources and moving parts.
3. **Wire Connections:** Carefully connect the wiring harness to the vehicle's central locking system, power supply (12V), ground, and turn signal lights according to the detailed wiring diagram provided in the included paper manual. Pay close attention to wire colors and functions.
4. **Test Connections:** Before fully securing all components, reconnect the battery and perform initial tests to ensure the system functions correctly.
5. **Secure Wiring:** Route and secure all wiring to prevent interference with vehicle operation and to protect against damage.
6. **Final Assembly:** Reassemble any removed panels or trim.

Refer to the detailed wiring diagram provided in the physical user manual for specific connection points and wire color codes.

Operating Instructions

The keyless entry system is operated using the provided remote controllers.



Image: A single remote controller for the keyless entry system, showing lock and unlock buttons.

Remote Controller Functions:

- **Lock Button (Closed Padlock Icon):** Press this button once to lock all vehicle doors. The vehicle's turn signals will flash once to confirm locking.
- **Unlock Button (Open Padlock Icon):** Press this button once to unlock all vehicle doors. The vehicle's turn signals will flash twice to confirm unlocking.
- **Car Finding Feature:** In some configurations, pressing and holding the lock button for a few seconds (or a dedicated button if present) may activate a car finding feature, causing the vehicle's lights to flash, helping you locate your car in a parking lot.

HELP YOU FIND YOUR CAR PARKING LOCATION



Image: A hand holding the remote controller in a parking lot, illustrating the car finding feature with signal waves.

Maintenance

The Shkalacar Keyless Entry System is designed for low maintenance. Follow these guidelines to ensure longevity:

- **Remote Battery Replacement:** If the remote's range decreases or it stops responding, the battery may need replacement. Refer to the remote's casing for battery type (typically a small coin cell battery) and replacement instructions.
- **Keep Dry:** Avoid exposing the control box and remote controllers to water or excessive moisture.
- **Clean Gently:** Clean the remote controllers with a soft, dry cloth. Do not use harsh chemicals or abrasive cleaners.
- **Avoid Physical Damage:** Protect the remote controllers from drops or impacts.

Troubleshooting

If you encounter issues with your keyless entry system, try the following troubleshooting steps:

- **System Not Responding:**

- Check the remote controller battery and replace if necessary.
- Ensure you are within the operating range of the system.
- Verify that the vehicle's 12V power supply to the control box is active.
- **Doors Do Not Lock/Unlock:**
 - Inspect all wiring connections to the central locking system for looseness or corrosion.
 - Check the fuse on the wiring harness. Replace if blown.
 - Ensure the vehicle's central locking system is functioning manually.
- **Lights Do Not Flash:**
 - Verify the connections to the vehicle's turn signal lights.
 - Check for any blown fuses related to the vehicle's lighting system.

If problems persist after attempting these steps, it is recommended to consult a professional automotive electrician or contact customer support.

Warranty and Support

For warranty information or technical support, please refer to the contact details provided with your purchase documentation or visit the official Shkalacar website. Keep your proof of purchase for any warranty claims.