

Manuals+

[Q & A](#) | [Deep Search](#) | [Upload](#)

manuals.plus /

- › [EarFun](#) /
- › [EarFun Air Pro 4 Wireless Earbuds User Manual](#)

EarFun TW600E

EarFun Air Pro 4 Wireless Earbuds User Manual

Model: TW600E

Brand: EarFun

[Setup](#)

[Operating](#)

[Maintenance](#)

[Troubleshooting](#)

[Specifications](#)

[Warranty & Support](#)

PRODUCT OVERVIEW

The EarFun Air Pro 4 are advanced wireless earbuds designed for superior audio experience and call clarity. They feature Adaptive Hybrid Noise Canceling, Qualcomm Snapdragon Sound with aptX Lossless, and a long-lasting battery. This manual provides detailed instructions for setup, operation, and maintenance.



Image: The EarFun Air Pro 4 Royal Blue earbuds shown with their charging case, highlighting their sleek design.

1. SETUP

1.1 What's in the Box

- EarFun Air Pro 4 Adaptive Hybrid ANC Earbuds
- Charging Case
- USB-C Cable
- Eartips (5 pairs: XS, S, M, L, XL)
- User Manual (this document)

52 Hours Ultra-long Playtime

11H

Single Charge

52H

With Charging Case



Wireless
Charging
and USB-C



*Laboratory data based on ANC disabled, 50% volume.

Image: The EarFun Air Pro 4 earbuds resting in their open charging case, illustrating the compact design and charging indicators.

1.2 Charging the Earbuds and Case

Before first use, fully charge the earbuds and charging case. Connect the provided USB-C cable to the charging port on the case and a power source. The indicator lights on the case will show the charging status. A full charge provides up to 11 hours of playtime for the earbuds and extends to 52 hours with the charging case. A 10-minute quick charge can provide up to 2 hours of playtime.

1.3 Pairing with Your Device

1. Open the charging case. The earbuds will automatically enter pairing mode.
2. On your device (smartphone, tablet, laptop), enable Bluetooth.
3. Select "EarFun Air Pro 4" from the list of available Bluetooth devices.
4. Once connected, you will hear a confirmation tone.

For Android devices, utilize the integrated Google Fast Pair feature for quick and seamless connection.



Image: A smartphone displaying the Google Fast Pair notification, indicating readiness to connect to the EarFun Air Pro 4 earbuds.

1.4 Installing the EarFun Audio App

For enhanced control and customization, download the EarFun Audio App from the Google Play Store or Apple App Store. The app allows you to customize the EQ settings, update firmware, and access additional features.

Find Your Preference Sound

Use the Sound Profile to find the perfect sound for you, and customize the EQ to your preference.

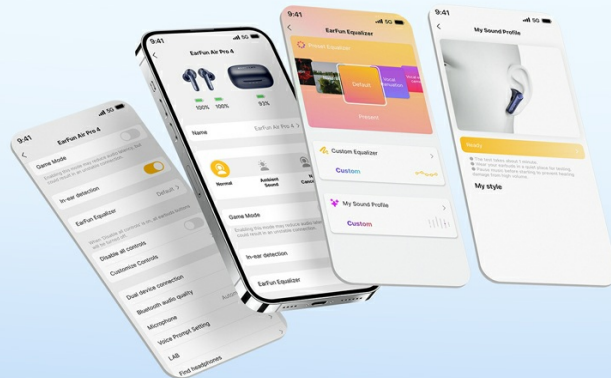


Image: Multiple smartphone screens showcasing the EarFun Audio App's interface, including EQ customization and sound profiles.

2. OPERATING THE EARBUDS

2.1 Adaptive Hybrid Noise Canceling (ANC)

The EarFun Air Pro 4 features Adaptive Hybrid ANC with QuietSmart 3.0 technology, capable of reducing noise by up to 50dB. The earbuds automatically detect your ear canal shape and wearing status to optimize noise cancellation. You can select different ANC modes via the EarFun Audio App (requires firmware version 0.2.0 or above).

Adaptive Hybrid Active Noise Cancellation

Adaptive Hybrid ANC with QuietSmart 3.0 tech reduces noise up to 50dB by automatically detecting the ear canal structure to achieve the deepest noise cancellation.

QUIET
SMART
3.0

50 dB
↓



Image: A woman wearing an EarFun Air Pro 4 earbud in a simulated airplane environment, demonstrating the effectiveness of the noise cancellation feature.

Adaptive Hybrid ANC

Real-time detection of ear canal structure and wearing status, intelligently adjusting the noise reduction depth to achieve the deepest noise cancellation.



Strong ANC

Balance ANC

AI Environment Adaptive ANC

AI Ear Adaptive ANC

Wind noise cancellation

50 dB
↓
ADAPTIVE
ANC



*Please update the firmware to version 0.2.0 or above to display five ANC modes in EarFun Audio app.

Image: A visual representation of the various Adaptive Hybrid ANC modes available, including Strong ANC, Balance ANC, and AI-driven adaptive modes for different environments.

2.2 Audio Quality and Codecs

Equipped with the Qualcomm QCC3091 SoC, the EarFun Air Pro 4 supports Qualcomm Snapdragon Sound with aptX Lossless Audio, LDAC, LE Audio, and LC3 codecs. This ensures high-fidelity sound reproduction with robust bass, articulate midrange, and sparkling treble, preserving original audio signals for a superior listening experience.

aptX Lossless With 3x More Detailed Sound

aptX lossless and LDAC Tech transmit 3x music details for superior sound.

Hi-Res
AUDIO
WIRELESS

LDAC

aptX™ Lossless



The Bit Rate of Bluetooth Audio Codec

SBC	aptX	aptX Adaptive	LDAC ⚡	aptX LossLess ⚡⚡
328kbps	352kbps	420kbps	990kbps	1.2Mbps

*Android: Please check codec compatibility. iOS does not support LDAC and aptX Lossless.

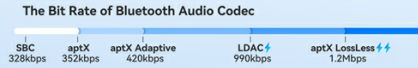
Image: A man enjoying music with the EarFun Air Pro 4 earbuds, emphasizing the support for Hi-Res Audio, LDAC, and aptX Lossless for detailed sound.



aptX[™] Lossless

aptX[™] Lossless Audio Codec

Combined the Qualcomm QCC3091 chipset with Snapdragon Sound[™] and aptX[™] Lossless tech, preserving all the original audio signals, offers CD-quality lossless sound.



*Android: Please check codec compatibility. iOS does not support LDAC and aptX Lossless.

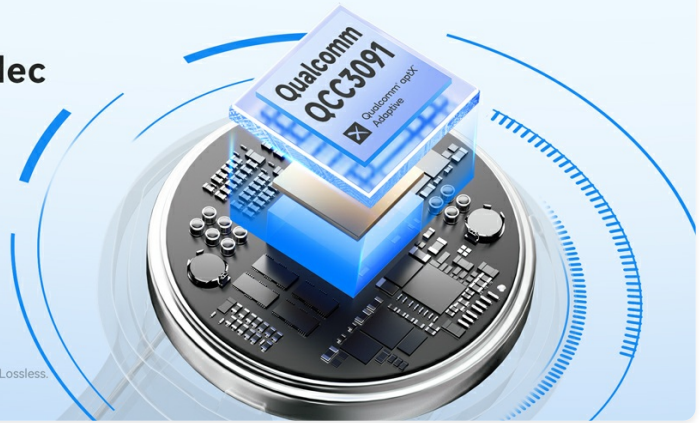


Image: A technical diagram illustrating the aptX Lossless Audio Codec and its superior bit rate compared to other Bluetooth codecs, ensuring CD-quality sound.

2.3 Call Quality

For crystal-clear calls, the earbuds incorporate 6 built-in microphones, advanced AI algorithms, and Qualcomm cVc 8.0 technology. This combination effectively eliminates background noise, ensuring your voice is heard clearly regardless of your surroundings.

6-Mic AI Algorithm & cVc 8.0 ENC Call

Combining 6-mic AI algorithm with cVc 8.0 tech for superior clarity call quality.



Image: A woman happily engaged in a phone call using the EarFun Air Pro 4 earbuds, with an inset diagram detailing the 6-mic AI algorithm and cVc 8.0 ENC technology for clear calls.

2.4 Multipoint Connection

The EarFun Air Pro 4 supports Multipoint Connection, allowing you to connect to two Bluetooth devices simultaneously. This enables seamless switching between, for example, your smartphone and laptop without needing to re-pair.



Multipoint Connection & Bluetooth 5.4

Easily achieve dual-device connectivity for a flexible and seamless audio experience

Image: The EarFun Air Pro 4 earbuds shown connected to both a smartphone and a laptop, demonstrating the multipoint connection feature for flexible audio use.

2.5 Auracast Broadcast Audio

With Auracast Broadcast Audio (available via updated firmware), you can share your audio with others or tune into public broadcasts and assistive listening systems. This feature allows for a shared listening experience.

Audio Sharing with Your Friends

Featuring the Auracast™ Broadcast Audio tech, sharing audio with your friends freely, delivers a life-changing audio experience.

 **Bluetooth® 5.4**

 **AURACAST**



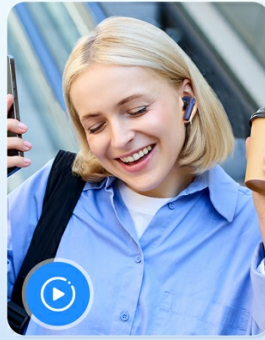
Image: Two individuals, one wearing royal blue and the other white EarFun Air Pro 4 earbuds, positioned back-to-back, illustrating the audio sharing capability via Auracast.

2.6 Touch Controls

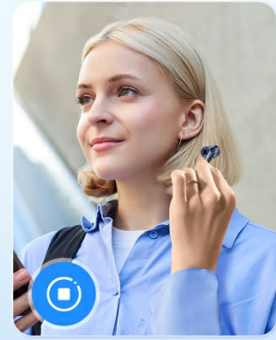
The EarFun Air Pro 4 earbuds feature intuitive touch controls for managing playback, calls, and noise control modes. Refer to the quick start guide or the EarFun Audio App for a detailed mapping of touch gestures.

2.7 In-Ear Detection

The earbuds are equipped with in-ear detection. Music playback will automatically pause when you remove an earbud and resume when you put it back in.



Put it on to play



Take it off to pause

Image: A visual demonstration of the in-ear detection feature, showing music playing when earbuds are worn and pausing when removed.

3. MAINTENANCE

3.1 Cleaning

Regular cleaning helps maintain sound quality and hygiene. Use a soft, dry, lint-free cloth to wipe the earbuds and charging case. For earwax buildup on the eartips or speaker mesh, gently use a small, soft brush or cotton swab. Do not use abrasive cleaners or submerge the earbuds in liquid.

3.2 Storage

When not in use, store the earbuds in their charging case to protect them and keep them charged. Store the case in a cool, dry place, away from extreme temperatures and direct sunlight.

4. TROUBLESHOOTING

4.1 Common Issues and Solutions

- **No Sound:** Ensure earbuds are charged, connected to your device, and volume is up. Check if the earbuds are properly seated in your ears.
- **Pairing Issues:**
 - Ensure Bluetooth is enabled on your device and the earbuds are in pairing mode.
 - Forget "EarFun Air Pro 4" from your device's Bluetooth list and try pairing again.
 - Place earbuds back in the case, close, then reopen to reset pairing mode.
- **One Earbud Not Working:** Place both earbuds back in the charging case, close the lid for a few seconds, then open them again. This often re-syncs them.
- **Poor Call Quality:** Ensure microphones are clean. Try disabling ANC temporarily to see if it improves clarity in certain environments.
- **Charging Problems:** Ensure the USB-C cable is securely connected and the power source is active. Clean the charging contacts on both the earbuds and the case.

4.2 Resetting the Earbuds

If you experience persistent issues, a factory reset may resolve them. Refer to the EarFun Audio App or the

official EarFun support website for specific reset instructions for your model.
For further assistance, please refer to the official [User Manual \(PDF\)](#) or contact EarFun customer support.

5. SPECIFICATIONS

Model Name	EarFun Air Pro 4
Model Number	TW600E
Noise Control	Adaptive Noise Cancellation (up to 50dB)
Connectivity Technology	Wireless (Bluetooth 5.4)
Audio Codecs Supported	aptX Lossless, LDAC, LE Audio, LC3
Microphones	6 Mics with AI Algorithm & cVc 8.0 ENC
Playtime (Single Charge)	Up to 11 Hours
Total Playtime (with Charging Case)	Up to 52 Hours
Charging Time	Approx. 2 Hours (Earbuds + Case)
Frequency Response	20 Hz - 20 KHz
Driver Type	Dynamic Driver
Control Type	Touch Control, App Control
Weight	56 Grams (total) / 1.98 ounces
Dimensions	2.36 x 1.97 x 1.22 inches
Water Resistance Level	Not Water Resistant






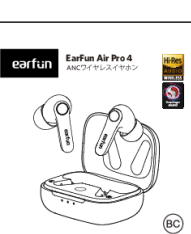
6. WARRANTY & SUPPORT

EarFun products typically come with a standard manufacturer's warranty. Please refer to the warranty card included in your product packaging or visit the official EarFun website for detailed warranty terms and conditions specific to your region.

For technical support, frequently asked questions, or to register your product, please visit the EarFun official website or their Amazon Brand Store:

[EarFun Official Amazon Brand Store](#)

[EarFun Official Website](#) (for general support and contact information)

	<p>EarFun Air Pro 4 ANC Wireless Earbuds User Manual</p> <p>Discover the EarFun Air Pro 4 ANC Wireless Earbuds user manual. Learn how to fit, pair, and control your earbuds for an enhanced audio experience. This guide covers app features, touch controls, LDAC activation, troubleshooting, and product specifications for optimal use of your Hi-Res Audio Wireless and Qualcomm aptX Adaptive earbuds.</p>
	<p>EarFun Air Pro 4 ANC Wireless Earbuds User Manual</p> <p>Comprehensive user manual for the EarFun Air Pro 4 ANC Wireless Earbuds, covering app features, fitting, pairing, in-ear detection, LDAC, touch controls, LED indicators, specifications, and troubleshooting. Learn how to optimize your audio experience and manage your earbuds.</p>
	<p>EarFun Air Pro 4 ANC Wireless Earbuds User Manual and Troubleshooting Guide</p> <p>Comprehensive user manual for EarFun Air Pro 4 ANC Wireless Earbuds, covering app features, pairing, in-ear detection, LDAC, reset, touch controls, LED indicators, specifications, and troubleshooting. Learn how to optimize your audio experience with these Hi-Res Audio Wireless earbuds featuring Qualcomm aptX Adaptive and Snapdragon Sound.</p>
	<p>EarFun Air Pro 4 ANC Wireless Earbuds User Manual</p> <p>User manual for the EarFun Air Pro 4 ANC Wireless Earbuds, detailing features like the EarFun Audio App, fitting instructions, pairing, in-ear detection, LDAC, reset, touch controls, LED indicators, specifications, and troubleshooting.</p>
	<p>EarFun Air Pro 4 ANC Wireless Earbuds User Manual & Guide</p> <p>Discover the EarFun Air Pro 4 ANC Wireless Earbuds user manual. This comprehensive guide covers setup, pairing with single or dual devices, in-ear detection, LDAC activation, touch controls, LED indicators, and detailed troubleshooting. Learn how to optimize your audio experience with the EarFun Audio App, manage noise cancellation, and ensure a comfortable fit. Includes specifications for Bluetooth, battery life, and charging.</p>
	<p>EarFun Air Pro 4 ANC Wireless Earphones User Manual</p> <p>Comprehensive user manual for the EarFun Air Pro 4 ANC Wireless Earphones, covering setup, pairing, features, controls, specifications, and troubleshooting.</p>