

## CASEKOO Samsung Galaxy S25 Ultra Case

# CASEKOO Patented 360° Spin Magnetic Stand Case

Model: Samsung Galaxy S25 Ultra Case

## INTRODUCTION

This manual provides comprehensive instructions for the CASEKOO Patented 360° Spin Magnetic Stand Case designed for the Samsung Galaxy S25 Ultra. This innovative case integrates multiple functionalities including a 360° spin stand, ring holder, magnetic compatibility, and military-grade drop protection, while supporting wireless charging.



Figure 1: Overview of the CASEKOO Patented 360° Spin Magnetic Stand Case.

## SETUP AND INSTALLATION

To ensure proper fit and protection, follow these steps for installing your CASEKOO case:

1. **Preparation:** Ensure your Samsung Galaxy S25 Ultra is clean and free of dust or debris.
2. **Installation:** Gently align your Samsung Galaxy S25 Ultra with the case. Insert one side of the phone into the case, then carefully press the other side until the phone is fully seated within the case. Ensure all edges are securely covered.
3. **Verification:** Check that all ports, buttons, and camera cutouts align correctly with your phone.

# Hold Tightly in One Hand



## Slim, Grippy and Protective

Figure 2: Proper handling and fit of the case on the Samsung Galaxy S25 Ultra.

### OPERATING INSTRUCTIONS

The CASEKOO case offers several integrated features for enhanced usability:

#### 360° Spin Stand and Ring Holder

The patented 360° rotating stand and ring holder provide versatile viewing angles and a secure grip. The ring can be adjusted horizontally and vertically within a 0-170° range.

- **To use as a stand:** Pull out the integrated ring from the back of the case. Rotate the ring to achieve your desired viewing angle for horizontal or vertical orientation.
- **To use as a ring holder:** Slide your finger through the ring for a secure grip, reducing the risk of accidental drops, especially with large-screen devices.





## Stand, Ring Grip & Magnet in One!

Figure 3: Demonstrating the 360° spin stand and ring holder functionality.

### — Horizontally Adjustable

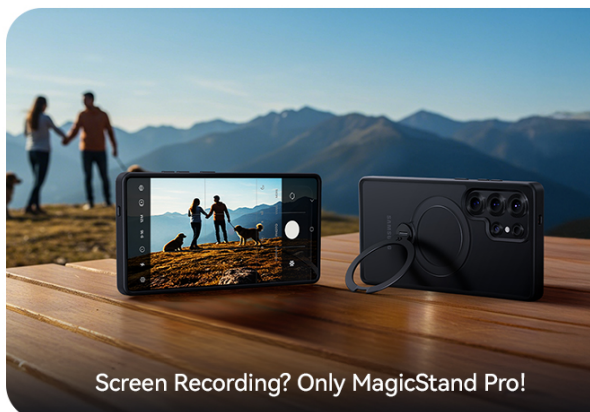


Figure 4: Horizontal adjustment of the stand for optimal viewing.



Figure 5: Longitudinal adjustment of the stand for various uses, including S Pen interaction.

### Magnetic Compatibility (MagSafe)

The case features a patented Halbach array for enhanced magnetic force, making it compatible with all MagSafe accessories and third-party Qi-certified wireless chargers.

- **Wireless Charging:** Place your phone with the case onto a compatible MagSafe or Qi wireless charger. The magnetic alignment ensures efficient charging.
- **MagSafe Accessories:** Attach MagSafe wallets, power banks, car mounts, or other compatible accessories directly to the back of the case.



# Stay Steady on Your Journey

Firmer Attachement &  
Safer Driving



Zero S Pen Interference  
& Fit for All MagSafe Accessories



Figure 6: Demonstrating MagSafe compatibility with various accessories.

Patented Halbach Array  
Firmer Attachment, Never Fall Off

7X



Enhanced  
Magnetism



2400gf  
CASEKOO



340gf  
Others

Figure 7: Enhanced magnetism for secure attachment.

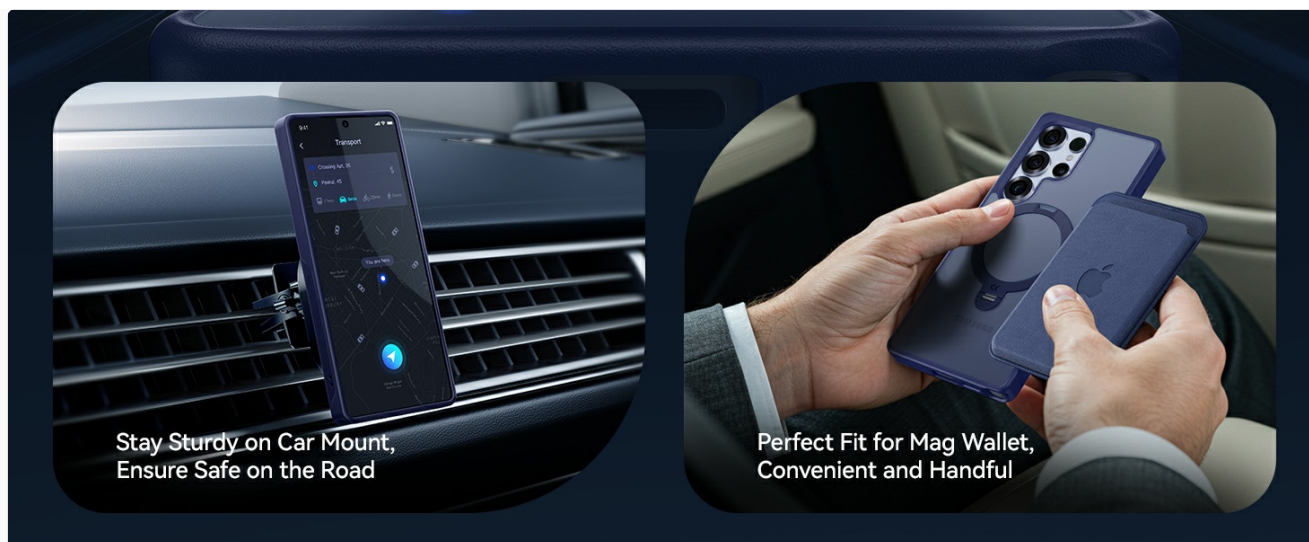


Figure 8: Use with car mounts and MagSafe wallets.

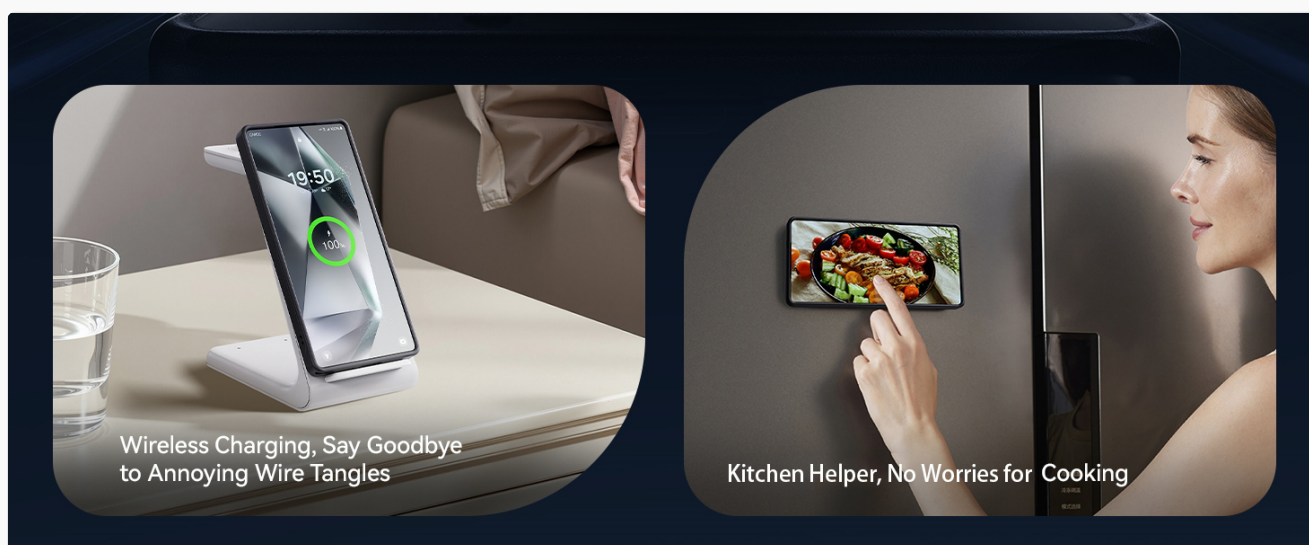


Figure 9: Wireless charging and magnetic attachment for convenience.

## MAINTENANCE

To maintain the appearance and functionality of your CASEKOO case:

- **Cleaning:** Wipe the case regularly with a soft, damp cloth to remove dust and fingerprints. For tougher stains, a mild soap solution can be used, followed by wiping with a clean, dry cloth.
- **Avoid Harsh Chemicals:** Do not use abrasive cleaners, solvents, or strong chemicals, as these can damage the case material and finish.
- **Storage:** When not in use, store the case in a cool, dry place away from direct sunlight.

## TROUBLESHOOTING

If you encounter any issues with your CASEKOO case, consider the following common solutions:

Problem	Possible Cause	Solution
Case does not fit properly.	Incorrect phone model or improper installation.	Ensure you have the correct case for Samsung Galaxy S25 Ultra. Re-install the case, ensuring all corners are snapped into place.

Problem	Possible Cause	Solution
Magnetic accessories do not attach securely.	Accessory not MagSafe compatible or foreign objects interfering.	Verify that your accessory is MagSafe compatible. Remove any debris or foreign objects between the case and the accessory.
Wireless charging is slow or not working.	Misalignment on charger or charger not Qi-certified.	Ensure the phone with the case is centered on the wireless charger. Use a Qi-certified wireless charger.
Stand feels loose or stiff.	Normal wear or minor debris.	The stand is designed for durability (30,000+ folds). If stiff, gently work it back and forth. Ensure no debris is lodged in the hinge mechanism.

## SPECIFICATIONS

Key specifications for the CASEKOO Patented 360° Spin Magnetic Stand Case:

- **Product Dimensions:** 6.65 x 3.23 x 0.52 inches
- **Item Weight:** 3.52 ounces
- **Compatible Phone Models:** Samsung Galaxy S25 Ultra
- **Material:** Silicone, Synthetic Rubber, Metal, Polycarbonate
- **Special Features:** Wireless charging compatible, Slim Fit, Heavy Duty Protection (18FT Military Drop Protection), Kickstand (360° Spin), Anti-Slip, Magnetic (MagSafe compatible)
- **Color:** Black (for this specific model variant)



# 18FT Military Grade Drop Protection

0 Broken So Far!



**18FT**  
Drop Height

**36+**  
Test Angles

**6000+**  
Drop Tests

**0%**  
Damage

**360° UP**  
All-round Airpad



Figure 10: Illustration of the case's military-grade drop protection.

**1.8mm+**

Camera Lip

**1.2mm+**

Screen Lip

**Grippier Texture**

**Anti-slip Design**

## Details, High-end's Origin

Figure 11: Detailed view of protective features and ergonomic design.

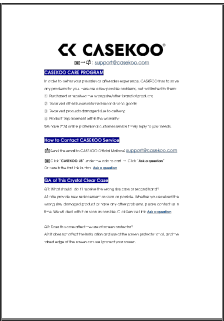
### WARRANTY AND SUPPORT

CASEKOO is committed to providing high-quality products and customer satisfaction. For any product-related inquiries, issues, or warranty claims, please contact the CASEKOO after-sales service center.

- **Contact Information:** Refer to the packaging or the official CASEKOO website for the most current contact details.
- **Online Resources:** Visit the CASEKOO store on Amazon or their official website for FAQs, product registration, and additional support.

*Note: Specific warranty terms and conditions may vary. Please retain your proof of purchase for warranty purposes.*

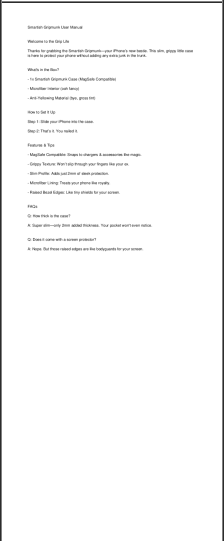
© 2025 CASEKOO. All rights reserved.



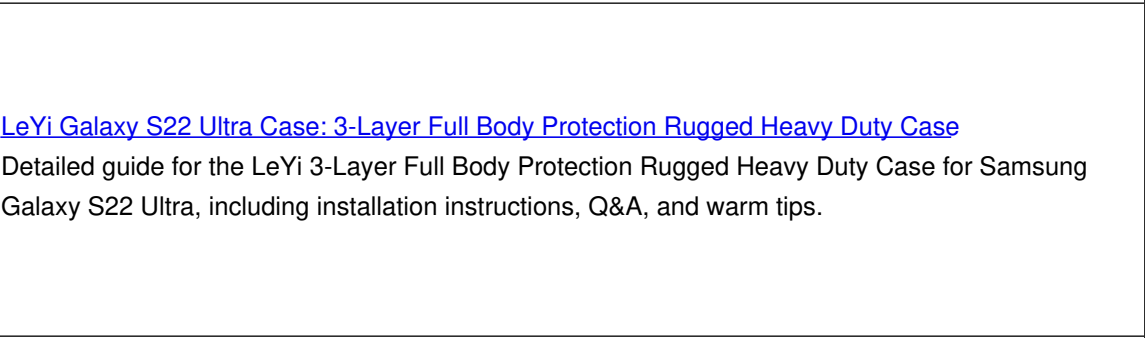
Information on CASEKOO's care program, how to contact customer service, and answers to frequently asked questions about their Crystal Clear iPhone cases.



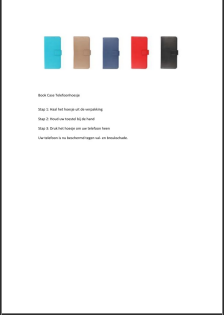
Official guide for TORRAS iPhone 15 Pro Max cases, covering customer support, compatibility (6.7-inch iPhone 15 Pro Max, 2023), MagSafe, and detailed usage instructions for the camera kickstand.



User manual for the Smartish Gripmunk iPhone case, detailing its features, setup, and FAQs. The case is MagSafe compatible, slim, and offers protection with a grippy texture and microfiber lining.

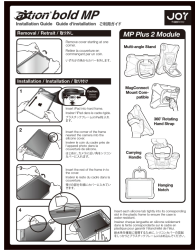


Detailed guide for the LeYi 3-Layer Full Body Protection Rugged Heavy Duty Case for Samsung Galaxy S22 Ultra, including installation instructions, Q&A, and warm tips.



Simple instructions for installing and using a Book Case phone case to protect your device from drops and breakage. Available in multiple colors.





### [The Joy Factory aXtion Bold MP/MPS Installation Guide for iPad mini 6th Gen](#)

Comprehensive installation guide for The Joy Factory's aXtion Bold MP and MPS rugged protective cases, including the MP Plus 2 Module and Security Cable Slot, designed for iPad mini 6th generation. Features military-grade certification, water resistance, and MagConnect compatibility.