

[Manuals.plus](#) /

› [Dithoko](#) /

› Dithoko Smart Toilet with Bidet Seat (Model: SmartToilet) Instruction Manual

Dithoko SmartToilet

Dithoko Smart Toilet with Bidet Seat Instruction Manual

Model: SmartToilet

1. PRODUCT OVERVIEW

The Dithoko Smart Toilet with Bidet Seat is an intelligent, one-piece toilet designed for enhanced hygiene and comfort. It features an automatic open/close lid, foot sensor activation, multiple washing modes, a heated seat, instant warm water, a warm air dryer, an LED display, and a night light. This manual provides essential information for installation, operation, and maintenance.



Image 1.1: The Dithoko Smart Toilet with Bidet Seat, showcasing its modern design.

2. SAFETY INFORMATION

Please read all safety instructions before installation and use. Failure to follow these instructions may result in electric shock, fire, or other hazards.

- **Electrical Safety:** Ensure the toilet is connected to a properly grounded electrical outlet. Do not use extension cords. Disconnect power before cleaning or servicing.
- **Water Supply:** Ensure water supply lines are properly connected and sealed to prevent leaks. Use only potable water.
- **Installation:** Professional installation is recommended for plumbing and electrical connections. Ensure all local plumbing and electrical codes are met.
- **Children and Individuals with Reduced Capabilities:** Supervise children and individuals with reduced physical, sensory, or mental capabilities to ensure safe operation.
- **Cleaning:** Do not use abrasive cleaners or harsh chemicals that may damage surfaces or internal components.

3. SPECIFICATIONS

Feature	Detail
---------	--------

Feature	Detail
Brand	Dithoko
Model Number	SmartToilet
Color	White
Main Material	Porcelain
Assembled Dimensions (L x W x H)	26.75 x 16.5 x 19.75 inches
Assembled Weight	83 lbs
Rough-in	12 inches
Flush System	Siphonic Jet, Water-Saving, Auto Flush
Bidet Functions	Women's Wash, Rear Wash, Massage Wash, Move Wash, Self-Cleaning
Comfort Features	Heated Seat, Instant Warm Water, Warm Air Dryer, Night Light, Adjustable Temperature Settings
Control	LED Display, Remote Control, Foot Sensor, Side Knob

Smart Toilet

Product Size

Size: 26.75" x 16.5" x 19.75"

12" Rough-in

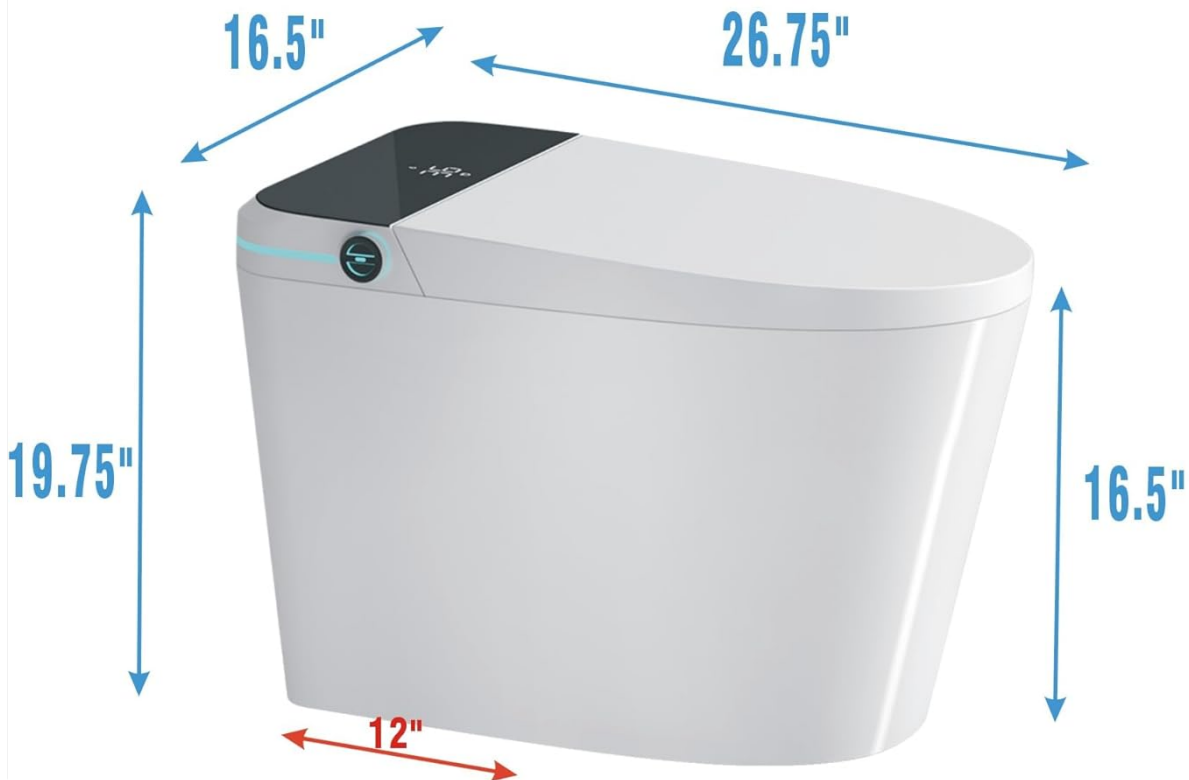


Image 3.1: Detailed product dimensions for installation planning.

4. INSTALLATION & SETUP

4.1 Pre-Installation Checklist

- Verify rough-in dimensions (12 inches) to ensure compatibility with your bathroom layout.
- Ensure a grounded electrical outlet (120V AC) is available within reach of the toilet's power cord.
- Confirm water supply line is accessible and has a shut-off valve.
- Gather necessary tools: wrench, screwdriver, sealant, measuring tape.

4.2 Installation Steps

Due to the integrated electrical and plumbing components, professional installation by a licensed plumber and electrician is highly recommended to ensure proper function and safety.

1. **Prepare the Area:** Turn off the main water supply and remove any existing toilet. Clean the flange area.
2. **Position the Toilet:** Carefully place the toilet over the flange, ensuring proper alignment.
3. **Secure the Toilet:** Fasten the toilet to the floor using the provided hardware. Do not overtighten.
4. **Connect Water Supply:** Connect the flexible water supply line to the toilet's inlet valve and the wall shut-off

valve. Hand-tighten, then use a wrench for a quarter turn.

5. **Connect Power:** Plug the toilet's power cord into the grounded electrical outlet.
6. **Test for Leaks:** Turn on the main water supply and check for any leaks around the connections.

4.3 Initial Setup

After installation, the toilet will perform an initial self-check. Allow a few minutes for the water tank to fill and the system to initialize. The LED display will indicate readiness.

5. OPERATING INSTRUCTIONS

The Dithoko Smart Toilet offers various intelligent features for convenience and hygiene. Familiarize yourself with the control methods:



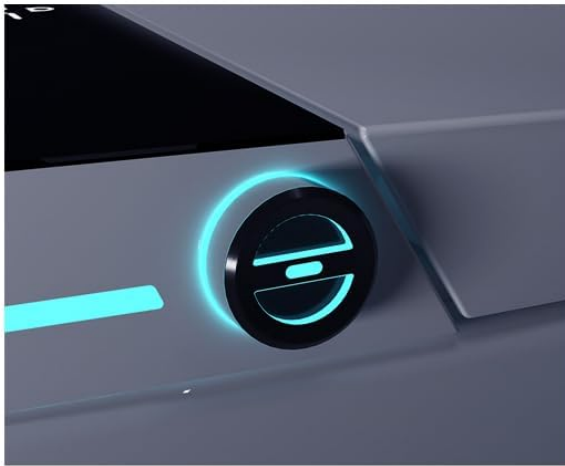
Image 5.1: Overview of smart functions including auto open lid, foot sensor flush, and off-seat flush.

5.1 Control Panel and Remote Control

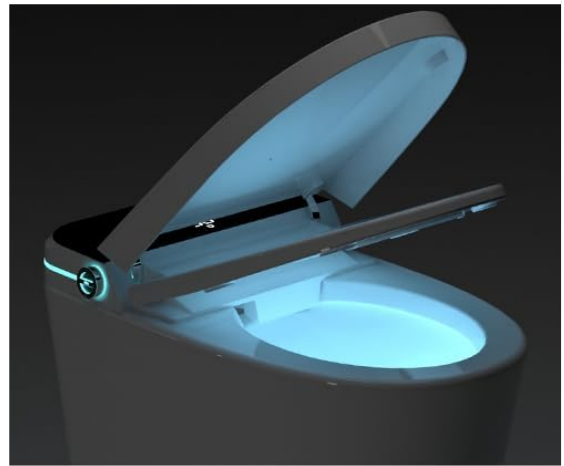
The toilet can be operated via the side knob, the integrated LED display, or the provided remote control. The LED

display shows current settings such as water temperature and seat temperature.

Function Introduction



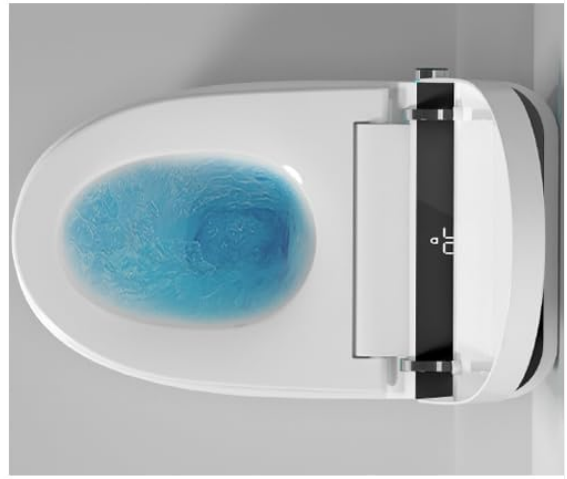
Side Knob



Night Light



LED Display



Powerful Flush

Image 5.2: Close-up of the side knob, night light, LED display, and powerful flush mechanism.

5.2 Automatic Open/Close Lid

The lid automatically opens when a user approaches and closes gently after use, providing a touch-free and hygienic experience.

5.3 Foot Sensor Activation

A foot sensor located at the base of the toilet allows for hands-free control of the seat lid and flushing. Simply wave your foot near the sensor to activate these functions.

5.4 Flushing System

The siphonic jet flushing system provides a powerful and efficient flush. The toilet also features an auto-flush function. In case of a power outage, the toilet can still be flushed if batteries are installed (batteries not included).

5.5 Bidet Functions

The integrated bidet offers multiple washing modes for personalized hygiene:

- **Women's Wash:** Gentle wash for feminine hygiene.

- **Rear Wash:** Standard posterior cleansing.
- **Massage Wash:** Pulsating water stream for a soothing effect.
- **Move Wash:** Nozzle oscillates for a wider cleaning area.
- **Self-Cleaning:** The nozzle performs a self-cleaning cycle before and after each use.

Multiple Wash Modes

Meets the needs of all your family members

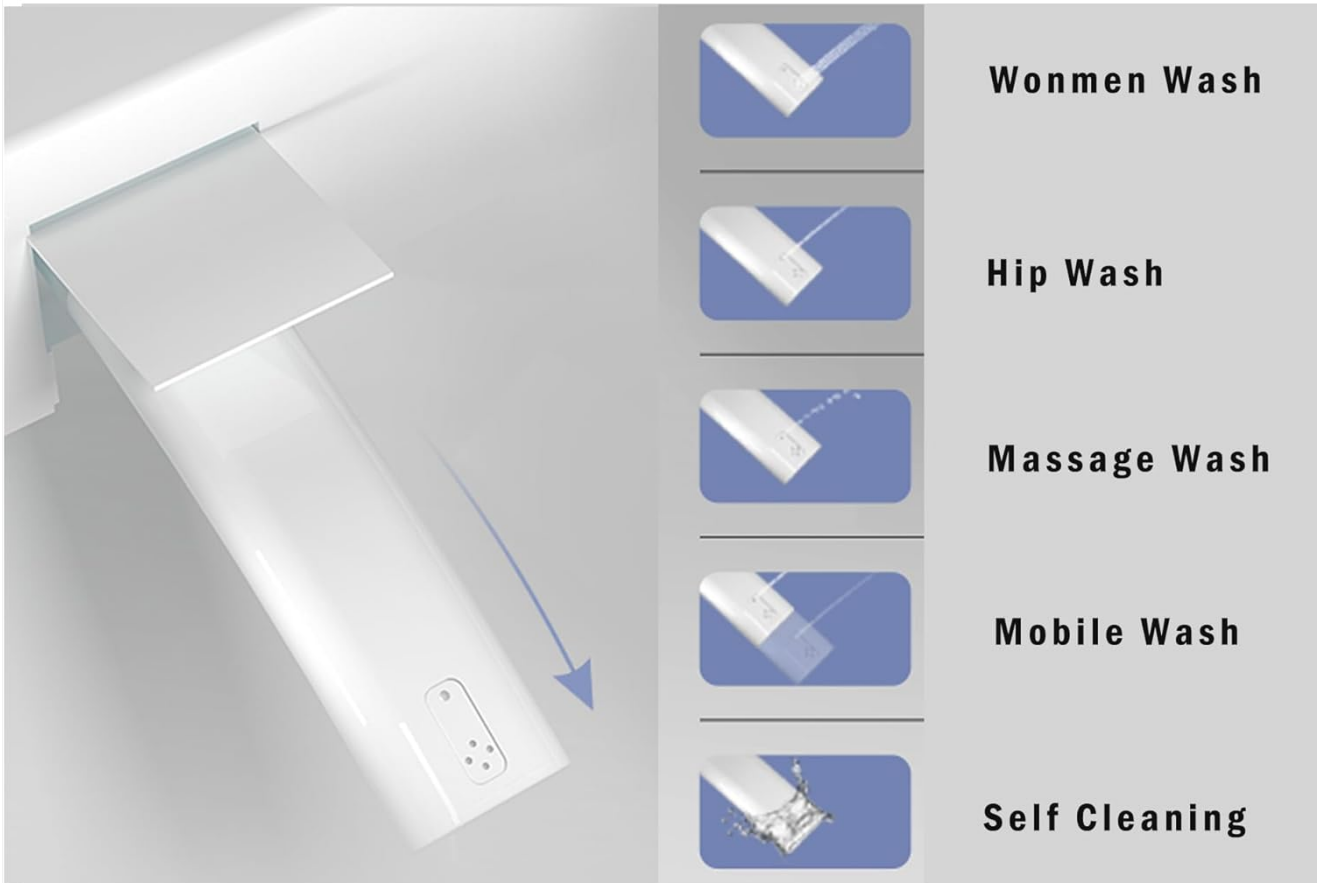


Image 5.3: Visual representation of the various bidet wash modes.

5.6 Comfort Features

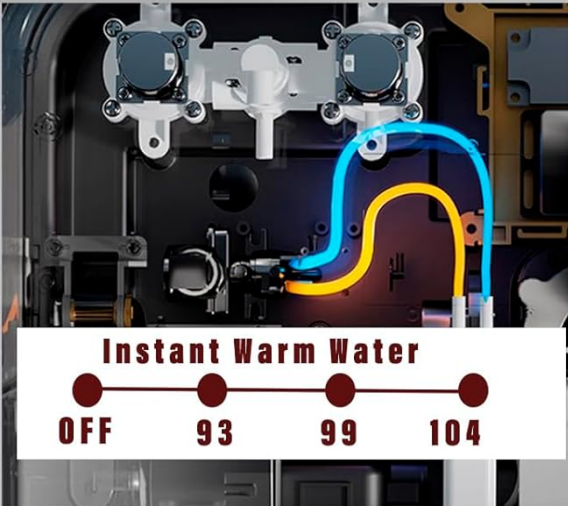
Enhance your experience with these comfort-driven features:

- **Heated Seat:** Adjustable temperature settings for optimal comfort.
- **Instant Warm Water:** Provides immediate warm water for washing without a delay.
- **Warm Air Dryer:** Adjustable warm air for drying after washing.
- **Night Light:** An integrated LED night light provides soft illumination for nighttime use.

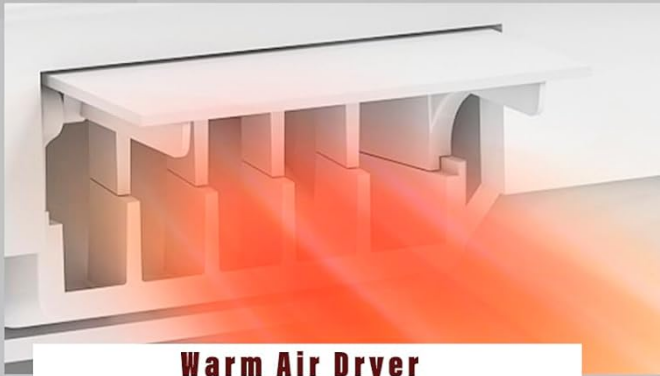
Instant Warm Comfort



Heated Seat



Instant Warm Water



Warm Air Dryer



Image 5.4: Illustration of the heated seat, instant warm water system, and warm air dryer.

Instant Temperature System

Ensuring a quicker and comfortable temperature experience.



Image 5.5: Diagram showing the instant temperature system for quick and comfortable water heating.

6. MAINTENANCE

Regular cleaning and maintenance will ensure the longevity and optimal performance of your Dithoko Smart Toilet.

6.1 Cleaning the Exterior

- Disconnect power before cleaning.
- Wipe exterior surfaces with a soft, damp cloth and a mild, non-abrasive cleaner.
- Avoid spraying water directly onto the control panel or electrical components.
- Dry thoroughly with a soft cloth.

6.2 Nozzle Cleaning

The bidet nozzle features a self-cleaning function that activates before and after each use. For deeper cleaning, you may manually extend the nozzle (refer to remote control instructions) and gently clean it with a soft brush and mild soap.

6.3 Filter Maintenance

Periodically check the water inlet filter for any debris. If clogged, turn off the water supply, remove the filter, clean it under running water, and reinstall. Refer to the detailed installation guide for filter location.

7. TROUBLESHOOTING

If you encounter any issues, refer to the table below for common problems and solutions. If the problem persists, contact customer support.

Problem	Possible Cause	Solution
No power / LED display off	Power cord unplugged, circuit breaker tripped, power outage.	Check power cord connection, reset circuit breaker, verify power supply.
No water for bidet wash	Water supply valve closed, water inlet filter clogged.	Open water supply valve, clean water inlet filter.
Lid not opening/closing automatically	Sensor obstructed, sensor malfunction.	Ensure sensor area is clear, try resetting power.
Weak flush	Water pressure low, partial clog.	Check household water pressure, clear any obstructions in the bowl or trapway.
Heated seat not working	Temperature setting too low, heating element issue.	Adjust seat temperature setting via remote or control panel.

8. WARRANTY AND SUPPORT

For specific warranty details, please refer to the warranty card included with your product or contact Dithoko customer service directly. Keep your purchase receipt as proof of purchase.

If you require technical assistance, have questions about operation, or need to report a defect, please contact Dithoko customer support through their official website or the contact information provided at the time of purchase.

No relevant product videos were found in the provided data.